

BUTTER OFFERING SHOWING DECLINE PORTLAND AREA

PORTLAND, Ore., June 17.—(AP)—Late decline in production and offering of butter here has been extremely marked and has created more than passing interest in the immediate future of values.

Demand for butter continues in excess of current supply. To the normal demand for table or cutting use, is added the speculative call, which remains more or less persistent.

There was no change in general prices for the day.

Market for egg was still without general price change here, although stocks of quality stuff are still decreasing; in fact, all arrivals are less. Underselling by holders of hot weather stock and by producers appear the cause.

Live poultry market continues to show nothing by a very low tone locally.

Some extreme fancy Bing cherries out of the Milton-Freewater section were on display today. The stock was packed and fill, the fruit of fancy quality, priced up to \$2.50.

Announcement is made by the General Grocery company of an advance of another dime per hundred pounds in the local price on sugar, effective Saturday morning. The new price will be \$4.20 for best cane and \$3.95 for best.

The snap is out of the tomato deal here with increasing stocks of hot house together with a very liberal gain of California. Sales of hot house are reported at 15¢-20¢ pound with little above 18¢. The market is not so good.

Markets

Livestock
 PORTLAND, June 17.—(AP)—Cattle 50, calves 10; nominally steady. Hogs 550, including 95 through; about steady.

Sheep and lamba 1350; about steady. Ewes 120 lbs. medium to choice \$1.00-1.25, 120-150 lbs. medium to choice 75¢-81.25.

Portland Produce

PORTLAND, June 17.—(AP)—Country meats—selling price to retailers: Country-killed hogs best butchers under 100 lbs., 5-5½¢; lamba 7-7½¢. Others unchanged.

Butter butterfat, eggs, live poultry unchanged.

Onions, potatoes, new and seed potatoes, strawberries, wool and hay quotations unchanged.

Portland Wheat

PORTLAND, June 17.—(AP)—Wheat futures:

	Open	High	Low	Close
July	50½	50¾	50¼	50¾
Sept.	50½	50¾	49½	49¾
Dec.	53	53	52½	52½

Cash wheat:
 Big Bend bluestem 61
 Soft white 52
 Western white 51
 Hard winter 50
 Northern Spring 50
 Western red 49½

Oats: No. 2 white, \$24.50.
 Today's car receipts: wheat 18; flour 99; corn 1.

Wall St. Report

STOCK SALE AVERAGES
 (Copyright, 1932, Standard Statistics Company)

June 17:	50	20	20	90
Ind's RR's	51	33	20	80
Ut's	51	33	20	80
Total	38.4	15.3	58.5	38.4
Prev. day	40.5	16.7	62.5	40.7
Week ago	39.1	15.5	59.4	39.0
Year ago	101.7	74.7	157.3	107.3

BOND SALE AVERAGES
 (Copyright, 1932, Standard Statistics Company)

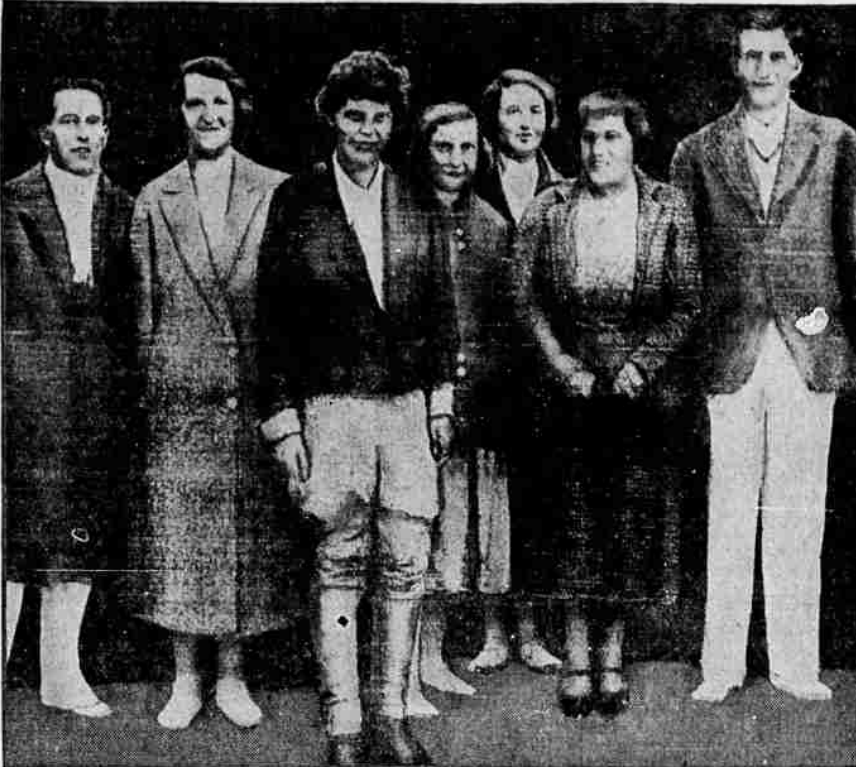
June 17:	20	20	20	60
Ind's RR's	51	33	20	80
Ut's	51	33	20	80
Total	55.1	33.9	74.5	61.2
Prev. day	55.1	34.1	74.8	61.3
Week ago	55.3	35.7	74.0	61.0
Year ago	85.1	99.4	100.4	94.3

NEW YORK, June 17.—(AP)—Stocks slipped back abruptly today as buying power evaporated. Selling was in meagre volume until the last hour, when, for the first time in several days, trading quickened on the decline. The list closed with a weak tone, with many leaders off 2 to 3 points. The turnover approximated 800,000 shares.

Today's closing prices for 17 selected stocks follow:

American Can	36½
American T. & T.	34½
Ansco	4
Curtis Wright	9
General Motors	4
Int. T. & T.	3½
Montgomery Ward	4½
Paramount Pub.	2½
Radio	3½
Southern Pac.	9
S. O. of Cal.	18
S. O. of N. J.	24½
Trans Am.	24
United Aircraft	8½

IRISH NATIVES GREET AMELIA AFTER OCEAN HOP



This picture, sent by radio from London to New York, shows Amelia Earhart (center), the first woman to fly the Atlantic alone, as she was greeted by the people of Londonderry, Ireland, after spanning the Atlantic in less than 15 hours.

U. S. Steel 25½
 Corp't Trust Shs. 1.57

Meteorological Report

Forecasts
 Medford and vicinity: Tonight and Saturday fair; moderate temperature. Oregon: Fair tonight and Saturday, but overcast at times near coast; moderate temperature.

Local Data
 Lowest temperature this morning, 41 degrees.
 Temperature a year ago today: highest 71; lowest 51.
 Total precipitation since September 1, 1931, 22.29 inches.
 Relative humidity at 5 p. m. yesterday 32 per cent; 5 a. m. today 92 per cent.
 Sunset today, 7:49 p. m.
 Tomorrow: sunrise, 4:35 a. m.; sunset, 7:49 p. m.

CHERRY CROP CUT TO HALF NORMAL

Oregon crop will find a ready market with the Jacobs, Malcolm and Burr firm in San Francisco, which has handled the greater part of the Ashland crop in the past few years. Mr. Wiley recently conferred with the company's representative, Walter Fredericks.

Root and Pankey's plant at the Ashland Fruit and Produce company will pack cherries again this year, according to reports from that city.

Rogers at Airport—Roy Rogers, front expert for the federal government, has established his headquarters temporarily at the weather bureau in the Medford municipal airport hangar. Until further orders, he will act as assistant to W. J. Hutchison, meteorologist.

CHERRY SHIPMENT FOLLOWS BERRIES

CORVALLIS, Ore., June 17.—(AP)—With the peak of the strawberry season past, Oregon and Washington cherries are now entering the market on the heels of the California movement, according to the weekly review of fruit and vegetable markets as reported by the U. S. C. extension service and the U. S. D. A. bureau of agricultural economics.

Shipment of fresh strawberries from Oregon districts reached a total of 25,000 crates a day, in addition to canning and barreling supplies, compared with a normal fresh berry movement of about 10,000 crates a day at the peak.

First northwestern cherry shipments have appeared from Kennebec and Umatilla county. Heavy northwest production is still predicted, although the Yakima and Willamette valley crops are spotted. California is shipping only about 700 cars this year and more than 600 have moved already.

Will Leave for Lake—Miss Alice Holmback, who graduated from the University of Oregon Monday, will leave next Wednesday for Crater Lake where she will spend the summer as a member of the resort staff, which is composed of university students.



My Platform is a full cereal bowl

IF SOME ONE could canvass the youngsters of the land for their favorite breakfast dish, he'd find a landslide vote for Kellogg's Corn Flakes. Every morning of the week, these crisp, toasted flakes start the day in millions of homes.

And what's better than a bowl of crunchy Kellogg's, served with cool milk or cream and fruit? Flavor that appetites can't resist. So easy to digest it furnishes rich energy for work, play—or just for feeling fit!

Mothers also appreciate the convenience and economy of Kellogg's. No cooking or trouble. Many servings from a package costing but a few cents.

Serve Kellogg's Corn Flakes for the children's evening meal. Kellogg's encourage restful sleep—how much better than heavy, hard-to-digest foods.

You'll prefer genuine Kellogg's. No other corn flakes have such flavor and freshness. For Kellogg's always reach you oven-fresh—because the flakes are completely sealed in an inside WAXTITE bag. It's a patented Kellogg feature. Look for the red-and-green package. Made by Kellogg in Battle Creek. Quality guaranteed.



Enjoy a bowl of Kellogg's

TRUCKMEN CALL FOR WEDNESDAY NIGHT MEETING

A meeting of all persons interested in the trucking of lumber and other forest products has been called for next Wednesday evening at the Chamber of Commerce for 7:30 o'clock. Ways and means of preventing the elimination of trucking through the proposal of the state highway department, limiting loads and speed, will be discussed.

Trucking interests have been allowed until July 1 to protest the proposal by showing the damaging results it would bring to the lumber industry.

If the regulation is adopted, it was pointed out here today, it will prove very detrimental to the lumber business of southern Oregon, constituting an almost complete failure for certain units of industry here.

Truck operators in Jackson and Josephine counties are asked to attend the meeting Wednesday night, which will be addressed by F. C. Walters of Eugene, president of the statewide association formed to combat

FRANK WOotan OF JACKSONVILLE DIES

Frank Wootan, a resident of Jacksonville, passed away at the Jacksonville sanitarium early Friday morning at the age of 60 years.

He is survived by one sister, Mrs. Carrie Smith, of Cascade, Idaho.

Funeral services will be held at the graveside in the Jacksonville cemetery Saturday at 2 p. m. Rev. T. H. Thieme will have charge of the services. Arrangements are being made with the Conger funeral parlors.

Wire Causes Fire—Electrical wiring was the cause of the fire early yesterday morning at the J. B. Yarborough residence, 40 Quince street, according to Fire Chief Roy Elliott. An investigation was made by him and Frank Rogers, city electrical inspector, Thursday afternoon.

FRANC PARADES AS 25 CENT PIECE TO ENTER REGISTER AT ROXY ANN

A Franc of the French monetary system, minted in 1918, stole into the cash register at the Roxy Ann fountain yesterday, passing for a United States of America quarter and its identity was not revealed until last night, when a check on the day's business was made by W. O. Webster.

Neither his son Ransom, nor daughter Millicent, who operate the fountain, admitted accepting the Franc, but both described it as looking very much like the silver piece, known to the westerner as "two-bits."

A standing goddess decorates a "heads" for each coin, but "tails" are decidedly different, as is also the weight of the money.

These two items wouldn't bother him at all, though, Ransom Webster stated this morning if it weren't for the fact that "the Franc is only worth about four cents now and we accepted it for 25."

In Klamath Today—Miss Jane Snedcor left this morning for Klamath Falls, where she plans to spend the week end attending to business matters.

From Dunsmuir—Mrs. H. Jaecke of Dunsmuir, is in Medford to visit her sister, Mrs. George Vance. She arrived in the city by train at noon today.

YOU SAVE IN BUYING

KC BAKING POWDER

25 ounces for 25¢

You save in using KC. Use LESS than of high priced brands.

SAME PRICE FOR OVER 40 YEARS

IT'S DOUBLE ACTING

MILLIONS OF POUNDS USED BY OUR GOVERNMENT

TRUKOLD SAVES ON EVERY DOLLAR YOU SPEND for FOOD



Save 1-4 to 1-3 of your meat money
 Save 1-3 or more on vegetables
 Save 1-3 or more on fruit
 Save 1-3 to 1-2 on canned goods

Buy in larger quantities. Buy big pieces—big sizes. Take full advantage of special sales, and of week-end clearance prices. Stock up for many meals ahead. With a TruKold in your home you keep everything until used. And by buying a week's supply at one time your savings can average 25¢ and more on every dollar.

Every Day You Wait It Costs You Money

Saving on food bills isn't even half the story. Think of the foods and milk you throw out—spoiled! Think of the left-overs that are thrown away! TruKold prevents all this waste . . . and every year you can save dozens of dollars now lost!

Furthermore, you save on your present icing costs. TruKold's improved, simple operation uses electric current only about one-fourth the time. You can actually use your TruKold all year for less than the usual cost for ice just in the summer months alone.

Start now. Cut expenses. See TruKold demonstrated. Learn how it saves more than it costs. See the proof of the money you are losing right now by not having TruKold in your home. Investigate! Come in today!

Sizes for All Families

Size for 2 or 3 Adults NOW **\$144.50**
 \$7.50 Down, \$7.50 Month

Size for family of 4 or 5 adults, \$10.00 Down, \$10 Month **\$174.50**

Size for family of 6 or more adults, Only \$10 Down, \$10 a Month **\$210.00**

Small Carrying Charge. Delivered and Installed Free. Nothing More to Pay. 30 Days Trial in Your Home! You'll say: "Such convenience . . . so much time, work and money saved! How did I ever get along without it!"

\$10 DOWN

No Freight Added — No Delivery Charges

ONLY \$10.00 MONTH

Small Carrying Charge

A greater value than ever. Pays for itself by saving you more than it costs. Super Service Power and All of the big points you hear talked about . . . EVERY important feature nationally advertised! Backed by Ward's millions and 60 year old company, your TruKold will never be an orphan. Always service, should you need it. WHY PAY MORE when you can not get more? Let TruKold prove itself to you on a

30 DAYS TRIAL in your home

MONTGOMERY WARD & CO.

117 So. Central Phone 286 Medford, Ore.

FOR SALE

40 acre tract next to city limits of Klamath Falls on paved highway. Exceptionally well located for cemetery or mausoleum. Priced very reasonable. Address

C. S. ROBERTSON

Room 601 Oregon Bank Bldg. Klamath Falls, Ore.