

ROOSEVELT AND HOOVER TIGHTEN DELEGATE GRIP

Illinois Sees Definite Trend in Tuesday's Primary Vote—Kentucky, Missouri and Florida Are Lined Up

CHICAGO, April 12. — (AP) — The mantle of popular favor for the presidential nominations of the Republican and Democratic parties apparently rested more snugly today on President Hoover and Gov. Franklin D. Roosevelt.

Illinois surveyed the outcome of yesterday's primary elections and found the indicated trend definitely favoring the chief executive and New York's governor.

And from three other states, two in the south and one in the west, came these expressions of political convention favor:

Kentucky pledged its entire Democratic delegation of 26 to Gov. Roosevelt.

Missouri for Hoover.

Missouri's state of 41 Republican delegates was instructed by the state G. O. P. meeting for President Hoover.

And to the President went Florida's 16 Republican delegates, instructed for him by the state convention and the remaining four by district meetings.

Gov. Roosevelt set the pace in the Democratic preference vote in Nebraska and widened the margin he set early over Speaker John N. Garner of Texas and Gov. William H. Murray of Oklahoma.

It was the first test of strength for the three in any one primary and tabulations from 1234 precincts gave Roosevelt 56,764, Garner 17,204, and Murray 13,026.

Write Hoover In.

Only the name of former Senator Joseph I. France of Maryland appeared on the Republican preference ballots in Nebraska but the voters voted President Hoover's name in and he polled 5,408 votes against 21,447 for France, in 1054 precincts.

Although the gubernatorial race overshadowed national issues in the Illinois primary, convention delegates favoring President Hoover for re-nomination were well in the van in nine districts and those militantly opposed to him and to prohibition led in only two.

Lewis Unopposed.

Bernard W. Snow, Cook county Republican chairman and sponsor of a slate of 15 delegates pledged against President Hoover and for a "wet" plank in the national Republican platform, was running third in the limited number of precincts reported.

Senator James Hamilton Lewis, the state's favorite son, was unopposed in the Democratic preference vote.

Former Senator France was also the only candidate seeking the Illinois Republican expression of preference. He received 20,900 votes from 803 precincts.

SMALL NOMINATED BY ILLINOIS G. O. P. FOR GOVERNORSHIP

CHICAGO, April 12.—(AP)—Former Governor Len Small, nominated for that office by the Republicans in yesterday's primary, had a lead of more than 50,000 over his closest opponent, Omer N. Gustaf of Galesburg, when 4404 of the state's 7229 precincts had reported. The vote: Small, 238,148; Gustaf, 204,790; Attorney General Oscar Carlstrom, 133,852.

Probate Judge Henry Horner of Cook county won the Democratic nomination on the basis of returns from 3901 precincts, which gave him a lead of 121,000 votes over his closest rival, State Representative Michael L. Igoe of Chicago.

The Carmack-Horner slate apparently will be in complete control of the forthcoming Democratic state convention. The delegates-at-large to be selected, however, are already pledged to Senator James Hamilton Lewis.

In yesterday's Republican senatorial contest, Senator Otis F. Glenn, incumbent, apparently was re-nominated and William Dietrich, congressman-at-large, chosen as the Democratic standard bearer.

John A. Swanson was re-nominated overwhelmingly for state's attorney of Cook county (Chicago) over Municipal Judge John H. Lyle and Michael Feinberg. Thomas J. Courtney, a state senator, was the Democratic choice.

Nazarene Church Holding Conclave

KALEM, April 12.—(AP)—Fifty Nazarene churches in western Oregon, Washington, and British Columbia, were represented in the registration of about 300 delegates for the annual convention of the North Pacific district assembly here last night. The convention will end Sunday evening.

WILLAMETTE CANAL WOULD CUT RATES

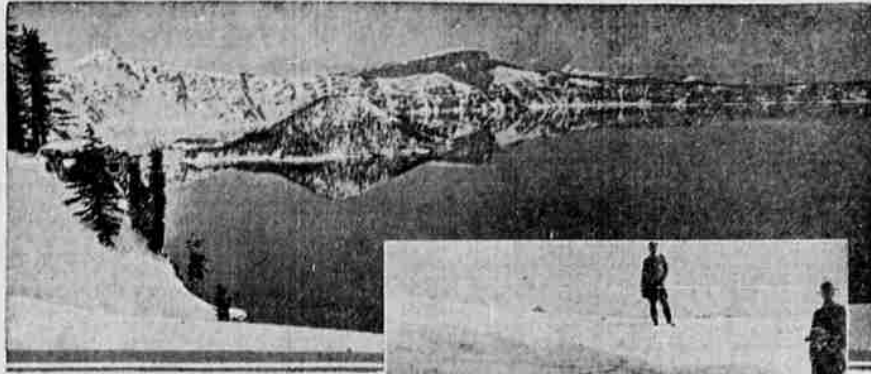
ALBANY, Ore., April 12.—(AP)—Lower freight rates made possible by canalization of the Willamette river would stimulate farming in Linn county and other valley points, in the opinion of County Judge D. C. Woodworth of Albany.

High Wind Sweeps Valley From South

The city and valley this noon were swept by a 32-mile per hour wind which came out of the south. In the higher levels the wind attained a greater velocity. No serious damage was reported, though there was a great rattling of windows and awnings. Rain accompanied the wind. The sudden storm followed two balmy spring days.

Gresham.—Al Johnson to open the Gresham Packing Co. in Dowsett building on Powell street.

First Auto to Enter Crater Lake Park Finds Natural Wonder in Snow Garment



Toj—General panorama of Crater Lake, showing super reflection park visitors saw upon their visit there last Sunday. The Sisseton Memorial can be seen in the left foreground with Wizard Island and the rim in the background.

Lower—First official car, Graham-Paige, to enter Crater Lake park this year at the end of the cut in the rim area, a short distance from the lodge. The snow here is 17 feet deep! Members of the first party standing in the picture are: Herb Grey, on top of snow bank, with Glenn Moulton and Harold Grey in lower part of picture. Chief Ranger Canfield and Ernest Hestel are standing on the bank.

Pictures of the first official car to enter Crater Lake national park when the south entrance road was opened to travel last Sunday were received today by the Mail Tribune, which sponsored the trip, made possible by winter-long snow removal efforts, though the depth was the greatest on record for the past 15 years.

The first car, a Graham from the Crater Lake Automotive company and operated on Gilmore gasoline and oil, was driven by Harold Grey of Medford, accompanied by Glenn Moulton, Gilmore Oil manager for Medford; John H. Weiser, a member of the staff of Botsford, Constantine & Gardner, advertising agency; Earl Gilbert, Klamath Falls Gilmore manager; Malcolm Epley, Klamath Falls Ranger; David H. Canfield, chief ranger, Crater Lake national park; Ernest Hestel, park publicity man, and Herb Grey, advertising manager of the Mail Tribune.

The trip was begun from Klamath Falls Sunday morning, following breakfast at the Willard hotel, with a large number of photographs taken of the drive along the way, as well as moving pictures, destined for national distribution. Snow banks reached a height of 17 feet at the rim, as shown in the pictures, and due to an ideal day, reflection qualities of Crater lake's mystic blue were superb.

Following the arrival of the first official car, motorists streamed into the park by the hundreds, including one party, M. Zelaski and family of Moscow, Ala., and quite a number of California and Washington motorists. In addition to the many Oregonians arriving from Klamath and Jackson counties.

SISKIYOU SUPERVISOR ELECTED PRESIDENT FEDERAL ASSOCIATION

At the luncheon meeting yesterday noon at the Hotel Medford of the Federal Business Men's Association of Southern Oregon, O. E. Mitchell, supervisor of the Siskiyou national forest, with headquarters in Grants Pass, was elected president to succeed B. E. Hayden, reclamation supervisor at Klamath Falls.

Other officers elected, all of whom were from Grants Pass, included J. Clyde Martin, postmaster, vice-president; A. G. Jackson, assistant supervisor of the Siskiyou national forest, secretary.

An executive committee was appointed by the president, with Hugh B. Rankin, supervisor of Crater national forest of Medford; Fred D. Wagner, postmaster of Ashland, and Wm. J. Warner, postmaster of Medford.

Lawrence Wieland, assistant postmaster of Grants Pass, also attended.

WOULD SPEED UP SALARY SLASHING

WASHINGTON, April 12.—(AP)—As the house economy committee went to conference with President Hoover this afternoon, Chairman McDuffie said he would bring up his plan for cutting federal salaries tomorrow despite opposition from the administration.

"The president wants us to hold back and put the salary reduction into one bill," he said, "but I think it best to put it on the legislative supply bill pending in the house."

"The 11 per cent cut allowing a \$1000 exemption, is preferable to the president's staggering plan calling for furloughs without pay."

HIGH WIND SWEEPS VALLEY FROM SOUTH

The city and valley this noon were swept by a 32-mile per hour wind which came out of the south. In the higher levels the wind attained a greater velocity. No serious damage was reported, though there was a great rattling of windows and awnings. Rain accompanied the wind. The sudden storm followed two balmy spring days.

Gresham.—Al Johnson to open the Gresham Packing Co. in Dowsett building on Powell street.

JACKSON COUNTY UTILITIES SHOW VALUE INCREASE

Public corporation valuations in Jackson county for the current year show an increase, but the tax thereon shows a decrease owing to the reduced tax levies, according to the county assessor's office.

Total valuation of public utility corporations in the county is placed this year at \$7,890,798.19, with a tax of \$229,373.28. Last year the total corporation valuation was \$7,538,037.17 and the tax was \$273,949.34, a decrease in both items.

The Southern Pacific railroad is the chief corporation beneficiary of the new tax order. Its tax this year totals \$86,239.26. Last year it amounted to \$111,155.74. Valuation also showed a decrease of approximately \$35,900. In 1931 the valuation was \$3,112,669.50. This year it is fixed at \$3,079,121.50.

The California-Oregon Power company this year has a valuation of \$3,556,753.90 with a tax of \$98,129.16, distributed over the entire county. Last year the Copco tax was \$110,000.75, with a valuation of \$3,185,702.52. The valuation increase is due to the Red Bluff project, constructed last year.

The Medford Logging railroad this year has a valuation fixed at \$293,076, with a tax of \$6732.82. The 1931 valuation was \$284,430, with a tax assessment of \$6627.01.

The valuation of the Pacific Telephone and Telegraph company for 1931 was \$359,064, with an assessment of \$15,061. This year the valuation totalled \$401,336 with an assessment of \$15,049.99.

SEATTLE MAYOR ELECT MUST WAIT INSTALLING

OLYMPIA, Wash., April 13.—(AP)—Mayor-elect John F. Dore of Seattle today lost his fight to assume office before June 6. The supreme court affirmed a King county court decision dismissing Dore's proceedings to oust Mayor Robert H. Harlin.

Work to Continue. PORTLAND, Ore., April 13.—(AP)—Work on the Owyhee reclamation project in the Vale section will continue despite a cut in appropriation which was described today as a "paper slash."

Work to Continue. PORTLAND, Ore., April 13.—(AP)—Work on the Owyhee reclamation project in the Vale section will continue despite a cut in appropriation which was described today as a "paper slash."

Work to Continue. PORTLAND, Ore., April 13.—(AP)—Work on the Owyhee reclamation project in the Vale section will continue despite a cut in appropriation which was described today as a "paper slash."

Work to Continue. PORTLAND, Ore., April 13.—(AP)—Work on the Owyhee reclamation project in the Vale section will continue despite a cut in appropriation which was described today as a "paper slash."

Work to Continue. PORTLAND, Ore., April 13.—(AP)—Work on the Owyhee reclamation project in the Vale section will continue despite a cut in appropriation which was described today as a "paper slash."

Work to Continue. PORTLAND, Ore., April 13.—(AP)—Work on the Owyhee reclamation project in the Vale section will continue despite a cut in appropriation which was described today as a "paper slash."

Work to Continue. PORTLAND, Ore., April 13.—(AP)—Work on the Owyhee reclamation project in the Vale section will continue despite a cut in appropriation which was described today as a "paper slash."

Work to Continue. PORTLAND, Ore., April 13.—(AP)—Work on the Owyhee reclamation project in the Vale section will continue despite a cut in appropriation which was described today as a "paper slash."

Work to Continue. PORTLAND, Ore., April 13.—(AP)—Work on the Owyhee reclamation project in the Vale section will continue despite a cut in appropriation which was described today as a "paper slash."

Work to Continue. PORTLAND, Ore., April 13.—(AP)—Work on the Owyhee reclamation project in the Vale section will continue despite a cut in appropriation which was described today as a "paper slash."

Work to Continue. PORTLAND, Ore., April 13.—(AP)—Work on the Owyhee reclamation project in the Vale section will continue despite a cut in appropriation which was described today as a "paper slash."

Work to Continue. PORTLAND, Ore., April 13.—(AP)—Work on the Owyhee reclamation project in the Vale section will continue despite a cut in appropriation which was described today as a "paper slash."

Work to Continue. PORTLAND, Ore., April 13.—(AP)—Work on the Owyhee reclamation project in the Vale section will continue despite a cut in appropriation which was described today as a "paper slash."

Work to Continue. PORTLAND, Ore., April 13.—(AP)—Work on the Owyhee reclamation project in the Vale section will continue despite a cut in appropriation which was described today as a "paper slash."

Work to Continue. PORTLAND, Ore., April 13.—(AP)—Work on the Owyhee reclamation project in the Vale section will continue despite a cut in appropriation which was described today as a "paper slash."

MISS PANKHURST HERE TOMORROW

Christabel Pankhurst of London, England, will give two addresses here tomorrow at the First Presbyterian church. In the afternoon she will speak to the women at 2:30 o'clock and in the evening she will give an address at 8 in the church auditorium.

Miss Pankhurst was associated with the woman suffrage movement in England for some time, and has also interested herself in religion and politics. Miss Pankhurst has traveled extensively, addressing many groups.

A finer flavor gives zest...



Caswell's NATIONAL CREST Coffee. Not Sold at Stores. We deliver direct to your home. Telephone The CASWELL COFFEE MAN Tel. 950-J-4, Medford. Automatic Electric Coffee Roasting Accomplished by the GEO. W. CASWELL CO.

SHERWIN-WILLIAMS PAINT HEADQUARTERS

You can do an artistic job on your Furniture and Woodwork with SHERWIN-WILLIAMS ENAMELOID!



Your favorite colors look even more charming in ENAMELOID—the Rapid-Drying Decorative Enamel. It's really fun to see a breakfast room set grow beautiful under your brush. The finish dries quickly, no inconvenience, porcelain-like, rich and ever so durable—and easy to clean. You've been waiting for this suggestion. Buy a can of Enameloid today. Per pint 1.00

A Colorful, Velvety Finish for Walls

FLAT-TONE brings to your walls a soft, restful and colorful finish, that is lastingly beautiful. Finger marks and soil can be removed quickly with soap and water. Let us show you the many tapestry effects possible with Flat-Tone. 90c

USE SHERWIN-WILLIAMS QUALITY BRUSHES FOR BEST PAINTING RESULTS

Fast-Dri Varnish for Floors

You don't have to worry when your floor is finished with MAR-NOT Fast-Dri Floor Varnish. Use them—let the children play on them because Mar-not is the longest wearing finish for wood and painted linoleum floors we know of. 1.50 Per quart.

Don't Miss "Keeping Up With Daughter" Every Friday Morning Over KMED From 10:30 to 10:45. Hubbard Bros. Inc. Since 1884

CHOOSE MEDFORD SCHOOL TEACHERS FOR COMING YEAR

(Continued from Page One.)

teachers re-elected at last night's meeting:

High School: C. G. Smith, Doris Baier, Ralph Bailey, Harriet Baldwin, Myrna Barrett, Eula Benson, D. K. Burgher, Maurine Burgher, Maurine Carroll, H. P. Cope, Glennie Mae Early, Gertrude Gates, A. J. Hanby, Fern Hartsook, Louise Holtenback, E. M. Husson, Elizabeth Jerome, Josephine Kirtley, E. M. Kirtley, Wilma Manley, Leiland Menzer, Lora Mitchell, LeVerna Mae Getchell, Marie Ridings, Ruth Swanson, C. D. Thompson, Wilson Walt, Clita Walden, Christine Holt, Louise Basford.

Junior High: B. R. Finch, Winifred Andrews, Margaret Arnold, Marvel Ellis, Earle A. Brown, Maybelle Church, Grace Colborne, Ruth Ella Dickerson, Albert Fitch, Annette Gray, Marguerite Hammond, Ray Henderson, Zoe Hubba, Marjorie Kelly, H. W. Keesece, Ruth McCollier, L. W. Marshall, Walter Nitzel, Gertrude Parker, Carol Ramsey, Ethel Scott, Virginia Wall, Della Whisenant, Helen Winter, Lillian Wise.

Jackson: H. W. Gustin, Marian Briggs, Mildred Henderson, Joanne Laidley, Iva D. Murray, Carja Nerisan, Grace Reid, Yvonne Smith, Ruth Stewart.

Ora Cox, Lucile Abbott, Ethel Chastain, Leona Crane, Aleth, Gray, Clara Gumelius, Freda Schneider, Ora Tucker, Priscilla Webb.

Roosevelt: Sara Van Meter, Mildred Aspinwall, Nina Carlon, Anna B. Carter, Eleanor Curry, Aileen Maxwell, Myra Russell, Ethel Willis.

Washington: J. C. Tucker, Avis Anaschütz, Marian Beeson, Ruth Bolton, Blanche Canode, Alice Cromar, Lyle Gregory, Amy Harding, Laura Lynch, Helen Noyes, Annie M. Watkins.

MANN'S 2nd Floor. 22 1/2's and 23's in \$5. WOMEN'S STRAWS. Sharkgrain Baku and Sisol Ruffette. Hatting the woman who has a big head is a special knack with us! Dignity, distinction, and a deceivingly youthful flattery are our aim! And, in the larger headsizes, there is no end of smart choice... straws for every preference... colors for every complexion... shapes for every occasion! WE SPECIALIZE IN LARGE HEADSIZES. NEW MERCURY SPORT HATS IN WHITE AND SUMMER SHADES, AT 98c set.

SALE of SHIRTS. Our annual spring shirt sale continues to draw many buyers. Hundreds of shirts have been sold and many more will leave our stock before this great sale ends. If you have not bought your supply of shirts, do so before it is too late as prices such as these cannot and will not last forever. \$1.00 SHIRTS. GROUP ONE consists of our regular \$1.00 fast color broadcloth shirts in plain and figured patterns. During this Shirt Sale 79c. \$1.50 SHIRTS. GROUP TWO includes our regular \$1.50 Pre-Shrunk Shirts of Fast Color Shirts. All sizes and styles. During this Shirt Sale \$1.00. \$1.95 SHIRTS. GROUP THREE, our regular \$1.95 "Shirtraft Airman" Shirts, Fast Color, Pre-Shrunk and perfectly tailored. Your choice for \$1.49. Mann's Department Store

Mann's Department Store. \$Day on Mann's Second Floor TOMORROW! COMPLETE STOCKS OF NOTIONS AT MANN'S. Summer sewing is at hand and you are using many notions and sewing supplies. Past colored tapes, threads, snaps, buttons, pins, etc., are among the needed things. Mann's carry a most complete stock of these handy and very necessary items. Shop in our popular Main Floor Notion Section. You will be satisfied with every purchase. Old Colony Knitting Yarn. Old Colony knitting yarn is a pure wool worsted that comes in full 3 oz. skeins in black, white, blue, green and brown. Special 50c. POLLY PRIM in Your Kitchen. Crumb Trays 59c, Recipe Cabinets 95c, Hot Dish Pads 25c, Match Boxes 25c, Note Pads 25 to 59c. Cretonne Covered Foot Stools for \$1.00, Chair Pads to match 19c ea., 6 for \$1.00, Fabricoid Covered Shoe or Utility Boxes with 5 compartments for \$1.00, "Curity" Dust Cloths... a scientifically treated cloth. Pastel Shades, each 10c. New Royal Society. Our new spring and summer "Royal Society" embroidery package outfits are now on display and sale in the Art Department. New pillow slips, baby dresses, towels, lunch cloths, boudoir pillows and other dainty pieces and sets. All are stamped ready for embroidery. Packages priced 50c to \$1.95. NEW FABRICS FOR SUMMER. Thousands of yards of new materials for the Home Dressmaker. Cottons, Silks and Linens. MAIN FLOOR. New 36 inch Wash Prints 19c yd., 36 in. Printed Lawns at 29c yd., 36 in. Print and Dotted Swiss 49c, 36 in. Novelty Voiles at 49c yd., New 36 in. Mesh Weaves at 59c, 36 in. Cross Rac Meshes at 79c, New 36 in. Wash Corduroy 59c, 36 in. R a y o n Shantung at 79c, 36 in. Dotted Irish Linen at 79c. 24x36 in. Chinelle Rugs going at 98c. New Mesh Dance Sets. The underwear section offers for Thursday a new group of fine rayon mesh dance sets for only 98c set. These cool summer garments come in all sizes of flesh and white and at this low price are a splendid value. See them tomorrow at Mann's. They are new! THURSDAY YOUR CHOICE 98c Set. A Romantic Name—An EXCITING PREPARATION. ORANGE FLOWER SKIN LOTION is our idea of a facial adventure. It is unusually refreshing, yet mildly astringent. Treat your skin to this fragrant, cooling preparation now showing at our Toilet Articles Section. The larger sizes are most economical. Dorothy Gray Orange Flower Skin Lotion, \$85, \$1.75 and \$3.25. MANN'S TOILET SECTION ON THE MAIN FLOOR