

FATTY' ARBUCKLE TO WED AGAIN



Associated Press Photo

Roscoe "Fatty" Arbuckle, former film comedian, now a motion picture director, and Addie McPhail, 24, film actress, have announced they will marry as soon as Arbuckle obtains a final decree of divorce from his present wife.

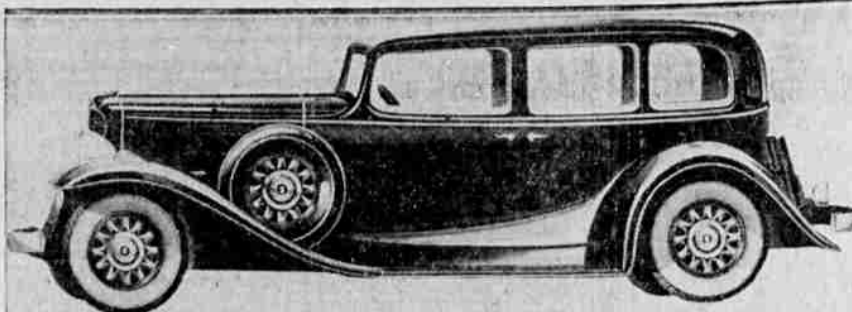
ANNUAL DUMPING OF GARBAGE IRKS RURAL RESIDENTS

Complaints have been listed with the state police, the sheriff's office and the county court that motorists on evening rides have started dumping tin cans and other refuse on the highways and byways. This is an unfeeling sign of spring in the valley and occurs as regularly as coming of the season and irritates the rural residents beyond words. If the offenders are caught, they will face fine and imprisonment of both, and cleaning up for a quarter of a mile in both directions from the dumping spot. County officials announced that the county jail prisoners would not be detailed to clean up the other fellow's mess and that a watch would be maintained to make a capture and set an example. The first report said that a wheelbarrow load of tin cans had been dumped on the Pacific highway between this city and Phoenix. The Old Stage road district also reports some new rubbish.

HOG FUEL BURNER BEING INSTALLED FOR COURT HOUSE

Equipment for installation of a "hog fuel" burner in the new county court house arrived last week and is being put in place. "Hog fuel" was substituted last winter when it was shown as efficient and more economical method of heating the court house. The "hog fuel" will be furnished by the Timber Products company, the Owen-Oregon and other local mills. The chute for the transfer of the chopped fuel to the furnace is also under construction. It is expected that the work of placing the Indiana limestone on the exterior of the structure will start within the week. The limestone is now being water painted and arranged for quick handling. Each piece of stone is cut to specifications, and will require some work by expert stone cutters. Placing of the Ashland granite on the front entrance is well under way. The interior partitions are being installed and as soon as completed a force of plasterers will be engaged. The main work is centralized at present on the roof, where the jail is located, and the pouring of concrete for this department was completed last week. The jail equipment has arrived for installation. Present maintenance of progress will mean that the general construction on the structure will be completed late in June and the court house ready for occupancy by mid-September.

New Nash Shown by Abbey



One of the outstanding cars for 1932 to be shown in Medford is the new Nash with its handsome slipstream design which is now displayed at the Walter W. Abbey, Inc. show-rooms on South Riverside avenue. Along with its distinction in appearance the new Nash car has unusually fine performance because of the aerodynamic design. Walter Abbey stated. Frontal air resistance is reduced by the V-radiator and sloping windshield for their contours so with the wind instead of against it as do the old-style stub-nose radiator and upright windshield. A carload shipment of G. M. C. trucks received by the Abbey sales and service recently is also attracting considerable attention from Medford's motor-minded public.

ANNUAL MEETING ELECTS OFFICERS AT PRESBYTERIAN

The annual congregational meeting of the Presbyterian church was held Wednesday evening, opening with a covered dish dinner at 6:30 o'clock. The following officers were elected to serve in addition to those now holding office: Deacon, R. E. Sweeney; trustees, H. B. James, W. S. Gilmore, T. P. Tolleson; treasurer, H. F. Spitzer; music committee, Mrs. A. J. Hanby, Mrs. C. C. Lemmon, Mrs. H. Patton; benevolence treasurer, Miss Elizabeth Burr, clerk of the congregation, Mrs. Maud Chapman; chairman of the congregation, Hamilton Patton.

Reports were made by representatives of the various organizations with Hamilton Patton, chairman of the congregation presiding. They included: Junior Christian Endeavor, Edith Hodgkins; Westminster Forum, Emily Brown; Crater Lake Guild, Emily R. Dymun; Woman's Missionary society, Mrs. A. J. Hanby; Woman's association, Mrs. C. B. Math; Sunday school, Mrs. W. S. Gilmore; The Session, A. L. Cunningham; treasurers report, H. F. Spitzer; financing committee, H. Patton; benevolence, R. E. Sweeney; stewardship, Walter Frazer Brown; budget committee, R. E. Sweeney; Bible class, Jeanette P. Garrett; deacons report, Mrs. Bell E. Little; organ fund, W. W. Howard; Men's club, R. E. Sweeney.

Wall St. Report

Table with columns for Stock Sale Averages and Bond Sale Averages, showing data for April 9th and previous days.

ANGELS AHEAD IN PORTLAND SERIES

LOS ANGELES, Cal., April 9.—(AP)—Los Angeles forged ahead in the opening baseball series here today by rapping out a 9-to-6 victory over Portland.

ROGUE VALLEY YOUTH BREAKS STUDY RECORD

(Continued from page one)

read and write when he was four years old, and thereafter continued with his own education so rapidly that by the time he entered school at six he was promoted six times making 6 grades in his first year. Educational magazines wanted to write up this prodigy, but were refused; instead, his father took him out of school and sent him on daily hikes in the hills with a sterling old prospector, to study nature and those things not learned from books.

give to several outside activities at college and also to instructing others; in his senior year he was teaching a class of juniors and seniors. He is far from being the typical high-brow "dick" however, and is sociable and modest and has many friends at college and in the Rogue River Valley, where he spends his vacations with his parents on Foothills Creek, employing part of his time in engineering work for the Rogue River Gold company, managed by his father, D. H. Perry. It was research work in chemical and electrical treatment conducted by John Perry which contributed to the solving of the muddy water problem at the dredge, which has been so successful for two years straight in eliminating all discoloration from Rogue River from Foothills Creek, which was formerly a source of complaint from sports fishermen.

Advertisement for Smudge Oil Hauling Reduced! For Limited Time—Reductions Made On All Hauling. See Us for Prices On Your Hauling SERVICE GUARANTEED. Phone 332. Reinking Trucking Company 309 South Front Street.

\$50,000 RANSOM PAID BUT INFANT IS NOT RETURNED

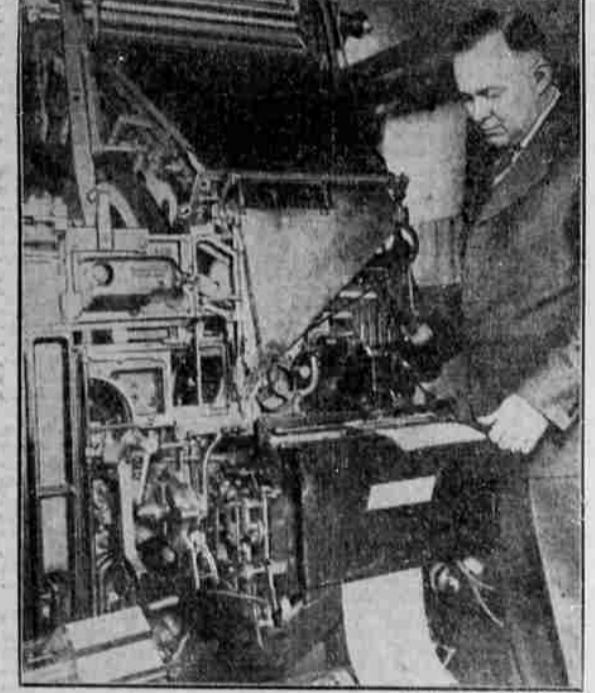
(Continued from Page One.)

upon the opportunity to extort \$50,000. The serial numbers given in the bank money circular were for bills totaling \$50,000; half in twenties, \$15,000 in tens and \$10,000 in fives. The best available sources said these were the same quantities and bill sizes demanded in an original ransom note left pinned to the window sill of the baby's nursery by the kidnappers. At Norfolk, Va., the very Rev. H. Dobson-Pescocock, one of three men there who have been seeking the child's return since eight days after the infant was kidnapped on March 1, said he did not believe there was any connection between their efforts and the failure of the ransom payment announced tonight.

RICHARD PRICE TELLS GROUP TOURIST TRADE INCREASING THIS YEAR

For the purpose of impressing upon the people of Oregon that one industry—that of tourist travel—will be greater on the Pacific coast this year than it has been for many years past, was the object of R. M. Price's visit to Medford yesterday with W. E. Boyd of the Benson hotel, Portland. At a luncheon at the Hotel Jackson Saturday noon, Mr. Price told his guests that the 122 conventions chartered for Portland between June and September, would bring hundreds of people to points throughout the state, especially where there is scenic attractions. He stressed the point that it is not necessary to spend large sums of money for advertising in distant places, for of the 93,000 out-of-state visitors registered in Oregon last year, 78,000 were from California and the state of Washington.

MACHINE 'READS' AND SETS TYPE



Buford L. Green demonstrated his automatic typesetting invention recently to newspaper and press association men in Charlotte, N. C. The machine literally reads and writes. The writing is in the form of lines of type which are set from the copy by an electric eye. The machine automatically does the work of a linotype operator.

Portland Wheat

Table showing wheat futures prices for Portland, Ore., on April 9th. Columns include Open, High, Low, and Close for various months.

Meteorological Report

Forecasts: Medford and vicinity: Sunday fair, with frost in morning. Oregon: Fair Sunday, becoming cloudy and unsettled on coast. Frosts in interior. Local Data: Temperature (degrees), 55 74; Highest (last 12 hours) 68 74; Lowest (last 12 hours) 35 33; Rel. humidity (percent) 91 37; Precipitation (inches) .00 .00; State of weather—Clear Clear; Total precipitation since September 1, 1931, 15.21 inches. Sunrise today, 5:38 a. m. Sunset today, 6:46 a. m. Sunrise Monday, 5:37 p. m.

Advertisement for Ore and Bullion Purchased by WILDBERG BROS. SMELTING & REFINING CO. Office: 742 Market St., San Francisco. Plant: South San Francisco.

Advertisement for ALBOLENE, The Original and Best RUSSIAN MINERAL OIL FOR CONSTITUTION. Highly refined, free from all impurities. 75¢ per gallon. AT ALL DRUG STORES.

Advertisement for HOTEL MULTNOMAH. When in Portland stop at "The Multnomah." More for your money at surprising economy. Rates from \$2.00 with Bath. Popular priced restaurants. New lobby, new furnishings, new service, and new many-other-things. Absolutely FIREPROOF. PORTLAND, OREGON.

Advertisement for HOTEL MANX. You'll feel at home in the Spacious Manx Lobby. OVERLOOKING UNION SQUARE. The Ultimate in comfort and genuine enjoyment—selected by seasonal visitors as San Francisco's ideal hotel—running ice water—Excellent Dining Room & Coffee Shop. 350 ROOMS WITH PRIVATE BATH AS LOW AS \$2.00 SINGLE, \$3.50 DOUBLE WITH DETACHED BATH AS LOW AS \$1.50 SINGLE, \$2.50 DOUBLE. Home of KROW radio station. Visit the studio. GARAGE IN CONNECTION. POWELL AT O'FARRELL. SAN FRANCISCO.

Advertisement for FENCING! AT CARLOAD PRICES. WE ARE UNLOADING A CARLOAD DIRECT FROM FACTORY. Field Fence 9 bar—Less Than 32 Cents Per Rod (Dozens Other Styles In Stock). Poultry Fence Average price Less than 1/2 cent per square foot. (Come Select Heights Desired). Poultry Netting Many Heights, Less than 4 1/2 Cents per square foot. (See the new 3/4 inch mesh and Fur Farm styles). Lawn Gates Average Less than 25 Cents per square foot. (Crested—Extra strong—Complete with latch and hinges). Lawn Fence Trellis, Flower Guard, average Less than 4 1/2 Cents per square foot. (Galvanized after chain link also available). Barb Wire Galvanized—less than 3 1/4 Cents per rod. (All specifications obtainable). Buy From This Carload and Save Money Above Prices Apply on Orders Any Size. VOLNEY DIXON. PAGE FENCE SINCE 1888. WESTERN DISTRIBUTOR. 134 North Riverside Ave. Phone 268.

Advertisement for The Young Business Man. FULL of ambition, hope, confidence—gradually accumulating an estate for his growing family often overlooks the fact that occasionally the "unexpected" happens. For his family's sake he should give a thought to the management of his estate in years to come—for example, during the life of his youngest child. We can, in a few minutes, explain how YOU may guide the financial destinies of your family. NEXT WEEK MAY BE TOO LATE SEE OUR TRUST OFFICER AT ONCE. The FIRST National Bank. "A Departmentized Bank".