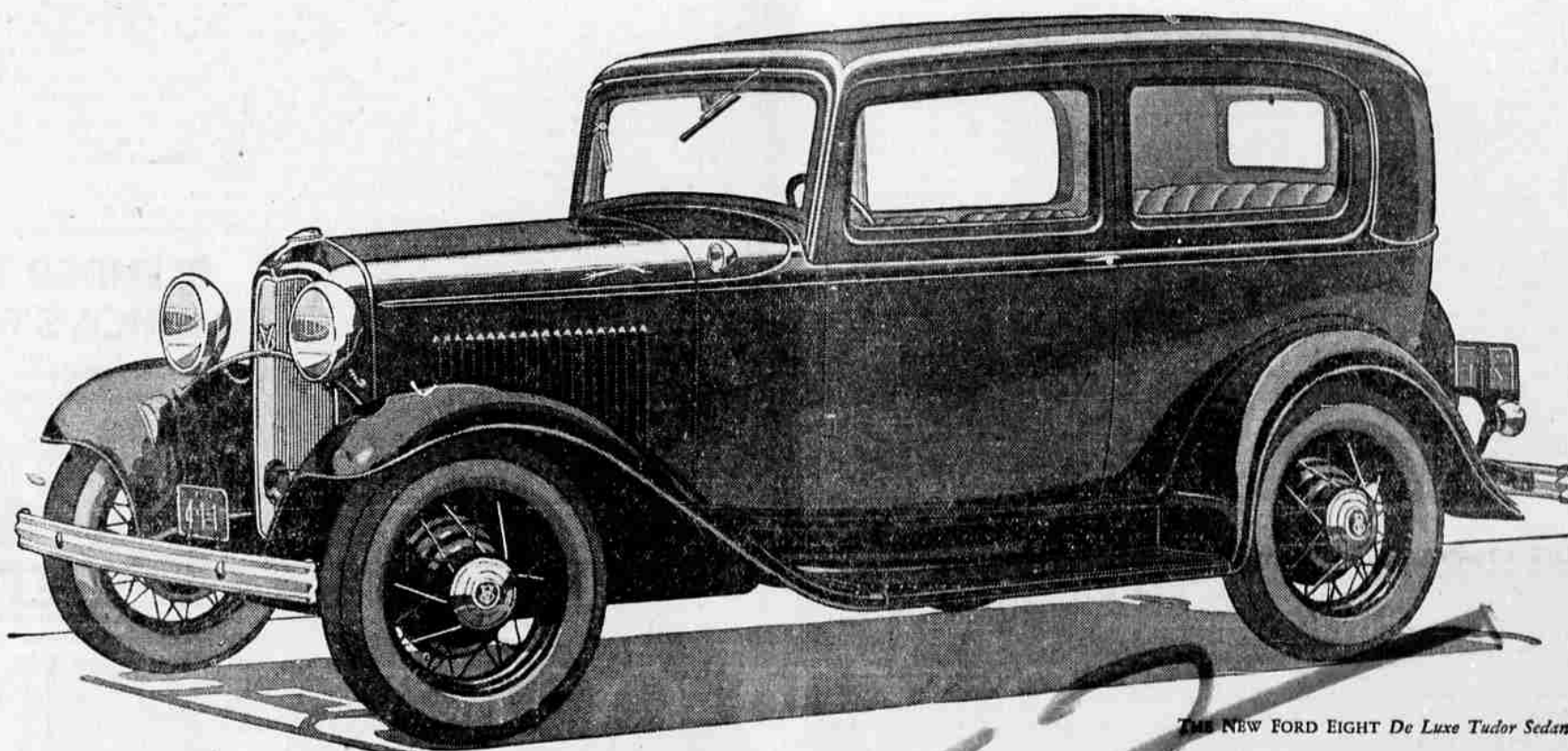


ANNOUNCING THE NEW FORD V-8 Cylinder



THE NEW FORD EIGHT De Luxe Tudor Sedan

**Eight-cylinder, 90-degree V-type, 65-horse-power Engine * Vibrationless
Roomy, Beautiful Bodies * Low Center of Gravity * Silent Second Gear
Synchronized Silent Gear Shift * Seventy-five Miles per Hour * Comfortable
Riding Springs * Rapid Acceleration * Low Gasoline Consumption * Reliability**

New self-adjusting Houdaille double-acting hydraulic shock absorbers with thermostatic control . . . New rear spring construction . . . Automatic spark control . . . Down-draft carburetor . . . Carburetor, silencer . . . Bore, 3 1/16 inches. Stroke, 3 3/4 inches . . . Piston displacement, 221 cubic inches . . .

90-degree counterbalanced crankshaft . . . Large, effective fully enclosed four-wheel brakes . . . Distinctive steel-spoke wheels with large hub caps . . . Handsome V-type radiator . . . Graceful new roof line and slanting windshield of clear polished plate safety glass . . . Single-bar bumpers, chromium plated . . . Low, drop

center frame . . . Mechanically operated pump drawing fuel from fourteen-gallon gasoline tank in rear . . . Choke on instrument panel . . . Individual inside sun visors . . . Cowl ventilation . . . Adjustable driver's seat . . . Choice of Mohair, Broadcloth or Bedford Cord upholstery in all de luxe closed types.

THE NEW FORD FOUR-CYLINDER CAR

An improved Ford four-cylinder, 50-horse-power engine, operating with new smoothness, is available in the fourteen body types listed below.

A GREAT NEW CAR AT AN UNUSUALLY LOW PRICE * * FOURTEEN BODY TYPES

- | | | | | | | |
|----------|-------------|--------------|------------------|---------------|----------------|-------------------|
| Roadster | Tudor Sedan | Sport Coupe | De Luxe Roadster | De Luxe Tudor | Cabriolet | Victoria |
| Phaeton | Coupe | Fordor Sedan | De Luxe Phaeton | De Luxe Coupe | De Luxe Fordor | Convertible Sedan |



GET COMPLETE INFORMATION AND PRICES THURSDAY, MARCH 31, AT ALL FORD DEALERS