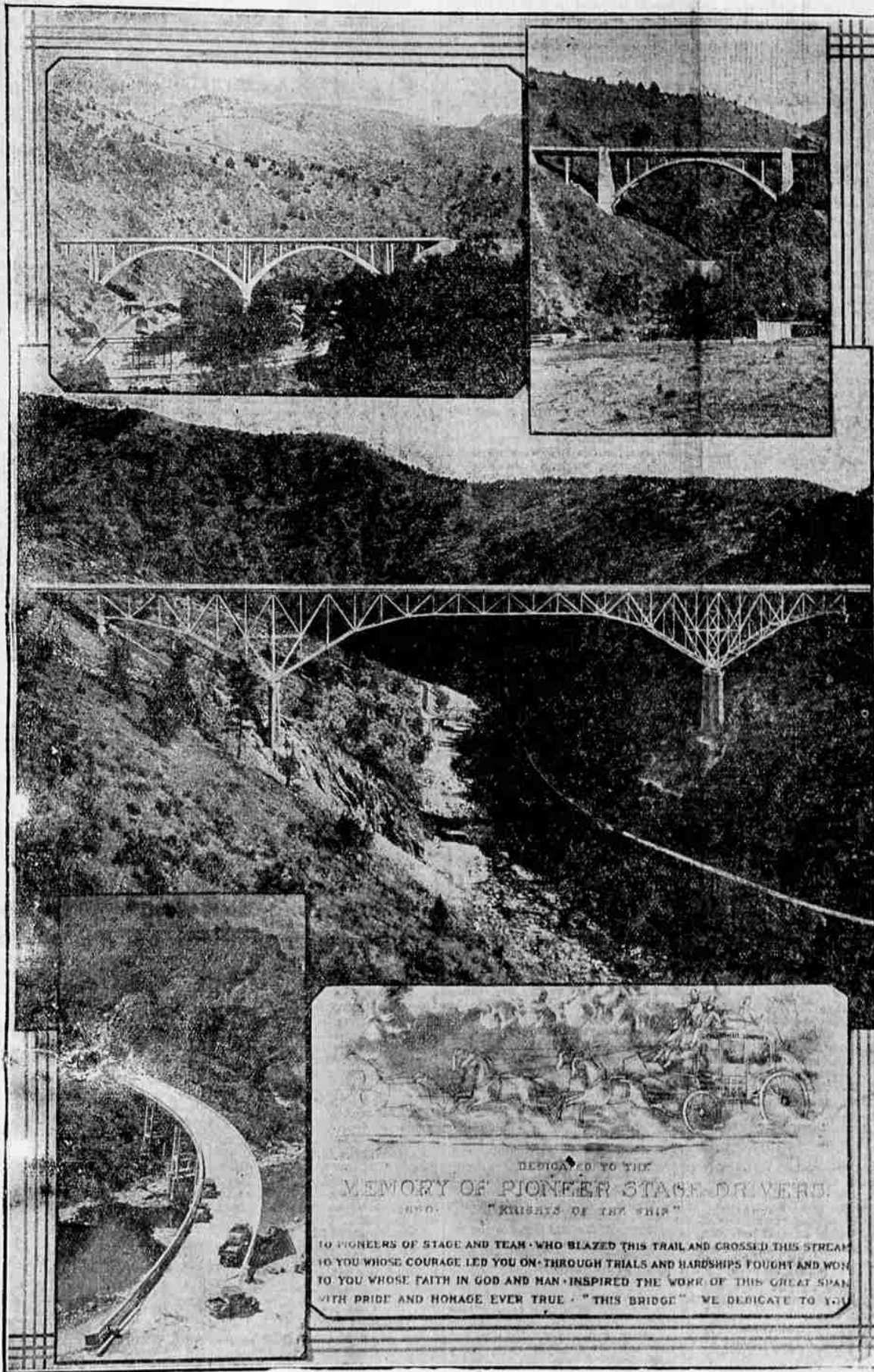


MEDFORD, OREGON SUNDAY, AUGUST 23, 1931.

No. 152.

Where Pioneer Stage Drivers Will Be Honored Next Saturday August 29



TOO ON GGAR IS YALCLUE

Marks On Norway Shepherdess Clue Related to European Birth Certificate Tempered With.

Aug. 22.—(UP)—European heraldry are studying a design reconstructed from the tattooed skin of Marthe, a shepherdess-woman and 60 years old, who may prove the illegitimate daughter of a princess belonging to the royal families of Europe. It is known as Marthe, or that she was sent to the island of the Assistance Publique in 1890, when she was most of these waifs, Marthe put in the hands of farmers became shepherdess girl in 1890, subjected to constant mistreatment.

She lived as best she could, 45 years of her life, mostly for her food. Then in 1928 a doctor treating her discovered scars on her body. He recognized them as tattoo marks which she had burned more than 30 years ago.

The doctor's advice the scars examined by experts who concluded as a baby, she had been marked by a clever artist and where she was three or four years old the marks had been obliterated by painful operations. The marks which remain, examining magnifying glass, show an emblem of an alliance between two families. It is a question whether this was done by her parents and then cut out when she was returned to their family. She may have had no knowledge of her lowly life in Paris, and she was in the orphanage.

Experts in heraldry have been unable to trouble in identifying the two royal coats-of-arms and to conclude their work shortly. Marthe can take some claim to share a portion of the French throne.

Official records in the French archives show that the birth certificate of the shepherd-beggar had been tempered with in the great volume of the 1st Arrondissement. Certifications had been scratched there is no clue from that to who her parents may be.

MISS NATALIA RUSSIA SEEKS DADS IN POLAND

(AP)—Countess Natalia, a widowed woman of Grand Duke Michael Alexandrovitch, brother of the czar of Russia, has legal proceedings against her ex-husband to recover four farms which she claims to be the grand duke when he broad acres in what is now Polish territory.

The farms represent a value of approximately \$1,000,000.

Countess Natalia married Grand Duke Michael in 1905, the divorced wife of the czar's adjutant. The imperial government recognized her not as the son of this marriage.

She has a 10-year-old son, Michael, who was murdered in 1918. She has a daughter, Princess Maria, who was recognized by the imperial government as the daughter of the czar. The fact that the royal family continued to give her a pension and to allow her to travel abroad, it was left to her to recover the farms.

George of England to sue the widow's hardship with financial help for herself and her children.

The fact that the royal family continued to give her a pension and to allow her to travel abroad, it was left to her to recover the farms.

George of England to sue the widow's hardship with financial help for herself and her children.

The fact that the royal family continued to give her a pension and to allow her to travel abroad, it was left to her to recover the farms.

George of England to sue the widow's hardship with financial help for herself and her children.

Show Public Acceptance of Nash

WIS.—(Special)—The Nash Company reported today that of 7029 July orders for cars, 6039, leaving over 900 unfulfilled orders. The company is adding to the snipping during the month of August.

Point to a steady demand for the four-door sound-proofed and advanced Nash cars, according to company officials.

Pioneer stage drivers of northern California and southern Oregon will be honored August 29 when the magnificent steel span, shown in the center of the above picture, is dedicated to their memory. The bridge which spans the Shasta canyon north of Yreka, is 267 feet above the bed of the river and will be known as "Pioneers' Bridge." Other bridges along the seven miles of re-located highway through the canyon are shown in the picture. The dedicated ceremonies will be held under the auspices of the Yreka Lions club and will be participated in by public officials and citizens from both California and Oregon.

AUTOMATIC FISHERMAN MAKES HIT IN GENOA

GENOA, Italy.—(AP)—Isak Walton of this seaport and fishing town are all agog over a new labor-saving gadget which rings a bell, hosts a lighted lamp and gives a strong jerk to the line when a fish bites.

A demonstration by the inventor was attended by officials of fishermen's clubs, port authorities and hundreds of spectators.

It was reported that a few fish were present as well.

SCIENTIST FINDS FRUIT LIKE LIME, PEACH, ORANGE

PHILADELPHIA, Aug. 22.—(AP)—Eight thousand specimens of tropical moths and butterflies, some believed unknown and some extremely rare, and news of a strange new fruit usable as food have been brought from the jungles of Ecuador by W. Judson Coxey, of the Philadelphia Academy of Natural Sciences.

At Banos he found the wild fruit which has some of the characteristics of the peach, orange, lime and tomato.

"Like an orange in shape," he said shortly after his return from the south American jungles, "it has a thinner skin covered with a peach-like fuzz. Its juicy pulp is filled with seeds resembling tomato seeds. The skin is green with red veins and the pulp is a vivid green. The juice, when strained, forms the base for a delightful drink already quite popular in the cafes of Quito."

ROGUE RIVER—R. M. Train, Marlon Train and W. D. Zentner plan rebuilding sawmill recently destroyed by fire.

Rainier—New sound equipment installed in Roseway theatre.

Reno Clubs Ban Movie Shots
RENO.—(UP) Gambling club operators here have lost interest in the idea of permitting movie companies to make "shots" in the clubs as back-grounds for pictures. The evening rush of business was halted in one of the leading clubs when camera equipment being used blew out light fuses to which it was attached.

Forty-four county schools being improved.—Culloquin Review.

L. A. PLANS 27 MILLIONS CIVIC WORK

Southern California Metropolis May Level Bunker Hill in Midst of Downtown Section if Funds Avail.

LOS ANGELES, Aug. 22.—Imagine dirt, enough to solidly fill 14 city blocks 100 feet high, being moved out of town on street cars.

That is what Los Angeles is preparing to do if it adopts a \$27,000,000 plan to remove "Bunker Hill," a large mound rearing its crest in the downtown district.

A hindrance to traffic and the growth of the commercial section of Los Angeles, Bunker Hill festered so long that citizens persuaded the city council and the county supervisors to remove this canker.

Trimming 30 Blocks

The huge task of slicing off 30 blocks of territory and regrading it to provide an approximate level with the surrounding district at first seemed to be an impossible one, but with aid of modern engineering equipment it was found feasible, provided the project could be financed.

All that the city fathers of Los Angeles are waiting for now is a financial Croesus who can suggest a plan whereby a bond issue—which would place Los Angeles' bonded indebtedness beyond all lawful limits—can be avoided. One proposal has been made that trust certificates or some other form of security not carrying an obligation of fixed debt service be adopted.

Because the task was adjudged to be too great for private enterprise, it has been recommended that public funds and public supervision be used in the demolition.

There are 43 actual city blocks occupied by the hill; of these 30 are to be regraded, plans are carried out. At the highest point Bunker Hill is 140 feet high.

Excavation Smallest Cost

Although the excavation of the 8,800,000 cubic yards of dirt is estimated to cost only \$4,570,000, the initial expense of acquiring the territory is high, being estimated at \$22,533,532.

However, since only the lower half of the hill is of any immediate use, it is planned to purchase it for \$14,982,038 and remodel that section first.

At present 29 per cent of this is covered by office buildings, 19 per cent by stores, 14 per cent by hotels, 10 per cent by flats, 7 per cent by department stores, 5 per cent by garages and parking stations, the remainder by miscellaneous enterprises.

Since it is just north of the heart of the business district, its values are somewhat affected by property values there, statisticians who compiled the figures declared.

Should Los Angeles attempt this project it will be following in the steps of Seattle, Wash., Milwaukee, Wis., and other cities that have found it necessary to change their natural contours to make way for natural growth.

FARMERS' RELIEF HUB OF INTEREST IN NEW CONGRESS

Many Schemes to Alleviate Difficulties Will Be Advanced — Debt Holiday Not Practical, Is View

By Frank I. Weller,
(Associated Press Farm Editor)

WASHINGTON.—(AP)—The new congress promises to see to it with almost every conceivable scheme to alleviate the farmer's financial difficulties.

Some advance planning even contemplates an absolute debt moratorium, but this usually steadies down to the more tangible proposition of federal reserve bank reform.

The first scheme, which obviously can hardly obtain although many expect it to be introduced, would extend liquidation of all landed indebtedness. Congress has not the power to regulate private bank operations, but it could grant a two or three-year moratorium to all farmers within the federal loan system, the time extension being added to loans at the date of original expiration.

Seek Liberal Policy.

However, most bills likely will seek a more liberal policy on the part of both national and state banks with regard to farm loans. The important thing to agriculture is to get farm land, livestock, crops and other assets accepted by state and federal bank examiners and by the federal reserve board as acceptable security for loans.

The federal reserve system now accepts only "liquid" assets as farm collateral, and agriculture feels that through the inability of financial institutions to use farm mortgage paper with the federal reserve, farm loans have been minimized and loans already carried seriously reduced.

Big Farmer Hampered.

The private banking system of this country, however, always has operated on a "liquid" assets basis, preferring 60 and 90-day renewable notes to the long-time credit involved in farm collateral.

The result is said to have been

FILM BUTTERFLY OF CHINA SUES THE 'BOY FRIEND'

Asks Court To Annul Betrothal To Lin Shin-Wan, Actor, Return Of Money She Loaned Him.

SHANGHAI, Aug. 22.—(UP)—A case which has attracted more attention in Chinese circles than any other in years, is one in which Miss "Butterfly" Wu, one of the Chinese motion picture stars, has sued Lin Shin-wan, also a movie actor, to annul her betrothal and be awarded damages.

Thousands of Chinese stormed the courtroom during the hearing. The judge reserved judgment.

"Butterfly" Wu was started recently in the first Chinese "talkie," entitled "The Singing Peony." She is considered the most popular screen actress in China.

In 1928, she was engaged to Lin at an elaborate ceremony in the Moon palace. The marriage has been postponed several times, and now the actress wants to call it off. But Lin still wants to marry her, and refuses to break the engagement, which is a binding contract in China.

The judge did his best to reconcile the couple. Miss Wu asked the return of loans amounting to \$2,400 she said she had given her fiancé, and \$1,000 damages, considered large in China.

Miss Wu told the judge she deserved this amount because, if she had not been betrothed three years ago to the defendant, she would already have made a satisfactory marriage.

that the farmer with small holdings, but possessed of negotiable stocks and bonds found it easier to obtain bank loans than the farmer of large capital investment who had only his property as security.

On the other hand, tremendous pressure threatens the federal farm loan board for alleged failure to press advantages of the intermediate credit banks and the joint-stock land banks—both of which accept farm land and crops as security.

GRAND RAPIDS, Mich., Aug. 22.—Mustrooms are the favorite dish of a cat owned by Miss Eugenia Van-Kammen. When allowed outside, the feline, "Sambo," searches the neighborhood for the delicacies.

Next to Craterian

Larry Schade

YOUR FAVORITE JEWELER SINCE 1918

Watch and Jewelry Repairing

COUNT

THE

YELLOW BOXES

—Real Proof That Country People Read the

MAIL TRIBUNE

Why Are Graham Cars So Much Quieter?

Only in the new Graham Sixes and Eights can you obtain ALL of these features which contribute so much to quiet, trouble-free operation—

- Improved Free Wheeling
- Rubber-dough body insulation
- Rubber engine mountings
- Rubber spring mountings
- Vibration dampeners
- Silent chain timing
- Bolted body joints
- Moulded brake linings

These are only a few of the 54 important reasons why Graham cars are BETTER cars. Let us show you—and let us bring you the entirely new thrill of a ride with Graham Improved Free Wheeling.

Sixes, \$785 up; Eights, \$1185 up, at factory. Graham Improved Free Wheeling, only \$35 extra in all models. Your present car will probably take the place of a cash down payment, very favorable terms.

CRATER LAKE AUTOMOTIVE CO.
Graham-Paige Dealers
103 S. Riverside—Phone 202
J. O. Grey H. D. Grey

Dependable Abstract Service

When it comes to all matters pertaining to titles, we are equipped to serve you well. For 26 years we have been compiling authoritative title records enabling us to offer the finest possible service.

Title Insurance

Jackson County Abstract Co.
127 E. Sixth St. Phone 41

GRAHAM