

FORMER SOCIAL LEADER PASSES IN CALIFORNIA

Duchess of Mecklenburg-Schwerin, Former Natalie Oelrichs Martin, Ill Few Weeks.

SAN FRANCISCO, Feb. 24.—(AP)—The body of the Duchess of Mecklenburg-Schwerin, divorced wife of Duke Heinrich Borwin Zu Mecklenburg, who died in Hotel Richelieu of pneumonia where she had resided alone the last year, remained here today pending completion of funeral arrangements.

The duchess, who was the former Natalie Oelrichs Martin of San Francisco and Newport, R. I., and once a social leader on both coasts, had been ill but a few weeks. Her condition became aggravated a few days ago. She was in her fifty-first year and was a native of Cheyenne, Wyo.

Peter Martin, internationally known polo player, and former husband of the duchess, was taken ill in Paris in 1913 and died two years later at Santa Barbara, Cal.

Duke Borwin Zu Mecklenburg, nephew of the then reigning Grand Duke of Mecklenburg, cousin of the crown princess of Germany and lieutenant in the noted Zieten Hussars, made his first visit to San Francisco in 1915 during the Panama Pacific International Exposition. He was a guest at the Martin home.

A romance between the duke and Mrs. Martin followed Martin's death and they were married in 1915 in New York City. The duchess inherited a fortune estimated at \$5,000,000.

Harvey B. Mallott, Glenn B. White and Charles Klum incorporate as Medford Motor Company. Federal Land Bank of Spokane vs. Thomas M. Riley—For money and attachment. R. O. Stephenson vs. E. B. Chandler—Lien. R. O. Stephenson vs. Emma Little—Lien. S. A. Brill vs. E. C. Gile—Contract.

Smith & Watkins, Inc., vs. Oregon-California Fast Freight (a corporation)—For money. Bruce Olding vs. P. B. Wickham—For money.

Dissolution of Partnership of Rachel Mead and Harry Furch under the business name of Mead-Furch Company and Rachel Mead assume the business name of the Mead-Furch company.

Probate Court Estate of William K. Coddling, deceased, admitted to probate.

Real Estate Transfers. First National Company to Wm. T. Roberts, W. D. to lots 5 and 6, blk. 16, Butte Falls, \$1.

Kate McAndrew to Maudie Burroughs, deed to land in DLG 59, Crowell, lot 13, blk. 3, Original town and land in DLG 49, W.P. 37, S. 1, R. 1 West, \$10.

Kate McAndrew to Maudie Burroughs, deed to land in DLG 59, W.P. 37, S. 1, R. 2 West, \$10.

M. J. Emerick, et ux to V. J. Emerick, Q. C. D. to 1/2 int. in N. 75 ft. lots 11, 12, 13, blk. 2, Medford, \$100.

Virgil H. Chapman, et ux to C. Peterson, W. D. to land in DLG 53, W.P. 38, S. 1, R. 1 East, \$1.

Peter Imeson, et ux, to C. W. Babo, et ux, W. D. to lot 26, Fairview Childrens Add., Medford, \$10.

R. E. Holman, et ux, to Carl S. Sivain, et ux, W. D. to lots 6 and 7, blk. 6, Lauriburst Add., Medford, \$10.

Carl S. Sivain, et ux, to Oregon Bank & Trust Co., W. D. to lots 6 and 7, block 6, Lauriburst Add., Medford, \$10.

Mary Nims to M. W. Wheeler, et ux, W. D. to lot 1, blk. 26, Ashland, \$10.

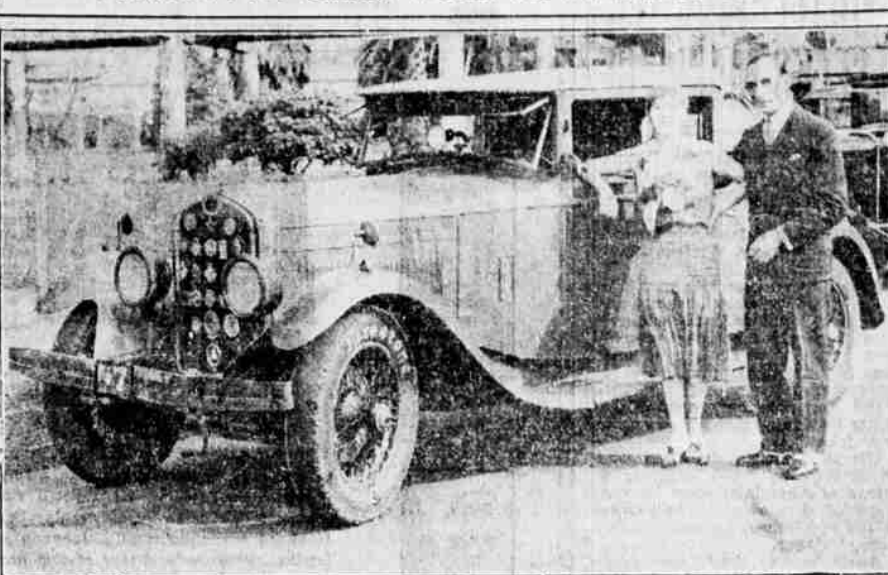
OLDENBURG, Germany, Feb. 24.—(AP)—The former Grandduke Friedrich August of Oldenburg died today at the age of 73.

The grand duke abdicated November 17, 1918, when a body of revolutionary soldiers from Wilhelmshaven told him that the time for royalty in Germany had passed. After that time he lived quietly on his family estate at Rastade.

Construction of a new field house and stadium is under way at Oklahoma A. & M. college at Stillwater.

Builds Sturdy Health

Famous Pair Circle World on Firestone Tires



ROGER LACOR AND HIS WIFE, ODETTE DARTHYS

Roger Lacor, famous French aviator and automobile racer, and his wife, Odette Darthys, noted French singer and comedienne, are now visiting the Pacific Coast on a world-circling motor tour.

Canned Bartlett Demand Showing Steady Increase Avers Federal Bulletin

The "Agricultural Situation and Outlook" bulletin of recent date issued by Oregon State Agricultural college and U. S. Department of Agriculture, gives the following general information regarding pears and apples:

"About two-thirds of the United States pear production is from the Pacific coast. The California, Oregon and Washington production of pears may now be roughly estimated at about 110,000, of which about two-thirds are in California. Approximately three-fourths of the trees are of the Bartlett variety and one-fourth of late varieties. In the Pacific northwest, the acreage is about equally divided between Bartlett and the late varieties. Around two-thirds of the trees have not yet reached the age for bearing, or are only partly bearing. New plantings are being made each year.

Production increased. "Pear production has been increasing on the Pacific coast at the rate of about 10 per cent a year. It seems likely that a similar rate of increase will be maintained during the next few years, but the possibility of serious damage from black-rot makes the future of California production uncertain. Production of pears in the eastern states and in Canada tends to decrease somewhat.

"The demand for canned Bartlett pears has been increasing. The Pacific coast pack from 1927 to 1929 averaged 3.5 million cases, compared to an average of 1.8 million from 1920 to 1922. This is an increase of 12 per cent a year, which has occurred without much change in the canned pear price level. Only about one-third of the California Bartlett are canned. A small part of the California Bartlett crop is dried, but more than one-half has been going to market fresh.

"Around one-half of the canned pear pack is exported, mostly to the British Isles. Exports have increased about in proportion to the increase in production.

Fresh Pears. "Prices for late fresh pears have already shown a downward tendency, which suggests that the supply of fresh pears has been increasing faster than the demand. Unless demand and distribution are not improved materially, the general average of prices for late pears is likely to be lower during the next few years.

"Around four-fifths of the United States fresh pear shipments originate in the Pacific coast.

The county court returned Sunday evening from an auto jaunt as far north as Olympia, Wash., and they inspected courthouses at Chehalis and Kelso, Wash., and at Hillsboro, Roseburg and Grants Pass, Ore. They learned a lot about courthouses and the extra costs thereof, which came in handy this morning in deliberations upon construction of the Jackson county courthouse, now under consideration.

Radio Program KMED

- Radio Program KMED (Mail Tribune-Virgin Station) Tuesday, Wednesday, Thursday, Friday, Saturday, Sunday. Includes programs like Lewis Super-Services, Jackson County Bldg. and Loan Ass., Beebe Service, etc.

RADIO

- Radio stations and programs: 7:30-8—R. A. Rolfe Dance Orchestra, KGO, KHQ, KGO, KGW, KE CA, KFSD, KTAR, etc.

GRANTS PASS, Ore., Feb. 24.—(Special)—The General Petroleum corporation of California expects to spend about \$200,000 in the construction of a gasoline and oil distribution plant here, according to W. T. Ehmke of Medford, district manager. Work will be begun as soon as negotiations for a site are completed. It is hoped to have the plant ready about April 15.

A deal has been practically completed for an acre tract of land located on the north side of the Pacific highway and near its junction with the Redwoods highway and the Murphy road. Present plans call for the erection of two storage tanks with a capacity of 20,000 barrels each, a storehouse, garage and office building. A complete super service station to serve the retail trade will be housed in a separate large building of early colonial architectural design. As soon as harbor developments at Crescent City, Cal., permit large tankers to enter the harbor and discharge there, it is likely that a fleet of tank trucks will be placed in operation between this city and Crescent City.

FT. KLAMATH SKI RACES DRAW BIG HUNGRY CROWD

Medford and other parts of Jackson county were liberally represented among the 4000 persons who gathered at Fort Klamath Sunday to witness the start and finish of the big ski race and participate in the other events of the winter carnival. All roads leading to Fort Klamath were filled with automobiles from southern and central Oregon and northern California points enroute to and from the winter playground Sunday morning and late afternoon and night.

All the local people report having had a good time and wishing their hosts would entertain again next year. The only fly in the pleasure ointment was that the luncheon arrangements were lax for feeding such a big hungry horde with appetites whetted by the crisp air at the high elevation.

It is related that there was only one outdoor refreshment stand of the hot dog and hamburger variety, in addition to the few regular eating places of the small village, and that this stand was surrounded by from 100 to 200 ravenously hungry persons all day long. Further, that it took so long to wedge in the waiting lines that many hundreds who had not the foresight to bring their own lunches along, finally gave up the task either from sheer exhaustion or from having filled up by eating snow while waiting. However, as far as anybody knew there were plenty of the toothsome hot dogs, hamburgers and the like but the difficulty was in getting within eating distance of the stand.

SERVES SAME FAMILY 82 YEARS UNTIL DEATH

LONDON, Ont.—(UP)—Eighty-two years of service with one family was ended recently by the death of Mary Ann Walsh, who died at 82. The Irish immigrant parents of the old servitor went into the service of Simpson Hackett Graydon's family 83 years ago. As Mary Ann and her younger sister, Alicia, grew up, places were found for them in the family's service. Alicia died two years ago, in her eightieth year.

She'd put sunshine into the heart of any man! Cheeks that glow with health... eyes that dance with life... thirty precious pounds of pep and personality! A body that radiates not only the sunshine without but the "sunshine" within... a child not merely well-nourished but well-protected. Ask the mother of Little Miss Bright Eyes and she'll whisper this big-little reason: vitamins! Priceless vitamins such as Nature stores deep in the heart of the wheat... such as you, too, can give your children (and yourself) in Carnation Wheat. More than a hot, nourishing cereal, it is The Vitalizing Cereal... whole wheat with the vitamin-rich heart left in!



The Vitalizing Cereal... hot Plump, golden, sun-filled grains... steamed and rolled into creamy, wafer-thin flakes... Carnation Wheat brings to your breakfast bowl all the health-heart of the wheat with its precious vitamins; bran, the regulator; carbohydrates and fats for quick-to-use energy; proteins for bone and muscle; minerals for rosy cheeks and robust bodies!



Whole wheat hearts. Science now tells us, are the richest known source of Vitamins B and E and the best cereal source of Vitamin A. Mysterious, priceless, life-giving vitamins... always essential to good growth, good appetite, good health... doubly essential in winter when Nature calls for added food-protection. Your grocer has it!

Carnation Wheat ONE OF THE Carnation-Albers PRODUCTS Others are: CARNATION MILK - CARNATION OATS (quick and regular) - ALBERS FLAPJACK - PEACOCK BUCKWHEAT - PEARLS OF WHEAT - INSTANT TAPIOCA - ALBERS CORNMEAL

ESPEE EXCURSION ATTRACTING MANY. Many Medford people will be leaving this city for Portland, San Francisco and other points north and south, according to indications today. For more than 60 requests for reservations on the excursion offered by the Southern Pacific Friday had been received at noon. Excursion prices are the same as offered last week, \$1 for each hundred miles, which means a roundtrip fare of \$7.15 to Portland, \$9.10 to San Francisco and correspondingly low fares to all other coast cities.

FRANCE AND BRITAIN REACH NAVY ACCORD. PARIS, France, Feb. 24.—(AP)—Foreign Minister Aristide Briand and Charles Dumont, minister of the navy, announced today that France and Great Britain had reached a naval accord in principle, conditional upon ratification and participation by Italy. They added that the agreement would be held secret until its approval by Italy.

PHOENIX GRANGE MEET TOMORROW. PHOENIX, Ore., Feb. 24.—(SpL)—The first meeting of the new Grange organization of Phoenix will be held Wednesday night at W. O. W. hall. This meeting was postponed from Tuesday night. It is very important that all officers should be present as they will be installed. County deputy of granges E. Nealon will be present to assist in the work Wednesday night. Neighbors of Woodcraft lodge will meet at the W. O. W. hall on Wednesday afternoon.

Advertisement for Chesterfield cigarettes. Features a large question mark, a tall thin column, and the text: 'YOUR EYES MAY FOOL YOU BUT YOUR TASTE tells the Truth! Milder... and Better Taste. They Satisfy. LIGGETT & MYERS TOBACCO CO. © 1931, LIGGETT & MYERS TOBACCO CO.'

OFFICIALS JUNKET REVEALS SECRETS COURTHOUSE COST

The county court returned Sunday evening from an auto jaunt as far north as Olympia, Wash., and they inspected courthouses at Chehalis and Kelso, Wash., and at Hillsboro, Roseburg and Grants Pass, Ore. They learned a lot about courthouses and the extra costs thereof, which came in handy this morning in deliberations upon construction of the Jackson county courthouse, now under consideration.

OIL COMPANY TO INSTALL STORAGE PLANT IN G. PASS

GRANTS PASS, Ore., Feb. 24.—(Special)—The General Petroleum corporation of California expects to spend about \$200,000 in the construction of a gasoline and oil distribution plant here, according to W. T. Ehmke of Medford, district manager. Work will be begun as soon as negotiations for a site are completed. It is hoped to have the plant ready about April 15.

EMPLOYMENT AGENCY BILL GOES TO HOOVER

WASHINGTON, Feb. 24.—(AP)—Congressional action on the Wagner bill to establish a system of national employment exchanges in cooperation with the states was completed today when the senate concurred in house amendments. The measure which the house passed yesterday in place of a substitute proposed by Secretary Doak now goes to the White House.

