



KNIT SUITS

Are the Last Word in Style for Spring!

Clever new models for sports, office, classroom and around-town wear in general.

Colors include: Star Gold, Coral, Yacht Blue, Rose Blonde, Chucker Green, Oriental, White.

\$18.95 to \$49.50

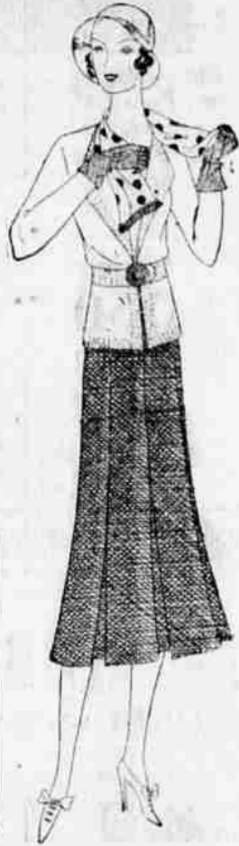
Hats

Sunny days demand chic new straw hats. We're showing clever shapes in Sisol, Baku, Panamalac.

\$4.95 to \$22.50

Adrienne's

"New Distinctive Apparel for Women"



GRAZING CASE IMPORTANT IN LAW DECISIONS

Butte Falls Fight Over Unfenced Land Recognized As Having Far Reaching Effect.

In recognition of the great importance from both a political and legal standpoint, of the legal battle recently fought in the local circuit court, and then in the Oregon supreme court, between the Big Butte Horse and Cattle Association, composed of about 25 cattle men in the Eagle Point and Butte Falls district and Alex Anderson, a sheep man in that district, the final decision of the supreme court has been fully reported and annotated in the last volume of American Law Reports, which yesterday was received by Medford attorneys.

American Law Reports is a collection of leading cases selected for their merit from the mass of American decisions, by the greatest legal editorial staff ever assembled. It is the only series of selected cases being compiled and annotated in this country today, and its volumes appear in the libraries of most American attorneys.

First Local Case. This case is the first one from this district that has ever been honored by being reported and annotated in A. L. R.

In 1919, the cattle men of Jackson county passed a law passed by the legislature declaring it unlawful to graze sheep upon a cattle range in Jackson county. In 1925, the defendant, Alex Anderson, pastured his sheep on unfenced deeded land in the midst of a cattle range on Butte Creek. The cattle men, represented by Attorney A. E. Beames, instituted a suit to enjoin him from so doing. Anderson, by his attorney, Don R. Newbury, defended the suit on the grounds that the law could not constitutionally apply to deeded land and that a man had the right to make such use of his land as he pleased, whether the same was fenced or unfenced.

New Application. The cattle men contended that because it was unfenced it was part of their cattle range, from which they could expel Anderson and his sheep. The case involved some very delicate questions of constitutional law with an entirely new application. It was bitterly contested in the circuit and supreme courts

of this state and involved such an important legal principle, the decision of which was likely to be so far-reaching, that Justice Thomas A. McBride of the supreme court kept the case under advisement for nearly eight months before rendering a decision. His final decision was in favor of Anderson, and the principle that the owner of the land, whether fenced or unfenced, could use the same as he saw fit, and that the legislature could not declare it to be a cattle range.

Last Decision. It was the last important decision written into Oregon law by the great jurist, who had sat on the supreme bench over 21 years, and had seen chief justice five times. He died two months after filing the decision, which stands as another great monument to his profound judicial learning and power of legal exposition.

Shortly after the opinion was written, Attorney Newbury received a letter from the publishers of A. L. R., stating that they intended to report the case and request copies of the briefs be prepared for the supreme court. The annotations following the reported case in that publication are made up largely from the briefs furnished.

DECLARE STOUT NEVER A DEPUTY

Gordon Stout, juror who served in the James H. Kingsley murder trial, is not a deputy sheriff and never has been, Sheriff Ralph Jennings said today in reply to a statement made in the appeal for a new trial for Kingsley. The statement declared Stout was now a deputy sheriff and serving on the jury while holding such position. Sheriff Ralph Jennings went through the records back to 1915 and found nothing that indicated Stout was ever connected with the office.

Meteorological Report

February 20, 1931
Medford and vicinity: Tonight and Saturday fair. Not much change in temperature.
Oregon: Generally fair tonight and Saturday, but unsettled northwest portion. Not much change in temperature.

Local Data	5 P. M. Yesterday	5 A. M. Today
Temperature (degrees)	48	28
Highest (last 12 hours)	49	49
Lowest (last 12 hours)	36	28
Rel. humidity (per cent.)	56	98
Precipitation (inches)		
State of weather	Pl. Clcy.	Clear

Lowest temperature this morning 27 degrees.

Total precipitation since Sept. 1, 1930, 6.99 inches.

Temperature a year ago today: Highest 48; lowest 32.

Sunset today, 5:50 p. m.
Sunrise Saturday 6:59 a. m.
Sunset Saturday, 5:51 p. m.

Observations Taken at 5 A. M., 120th Meridian Time

CITY	High Temp. Past 24 Hrs.	Lowest Temp. Last Night	Weather
Baker City	38	29	Clear
Bismarck	44	32	P. Clcy.
Boise	42	26	Clear
Denver	42	36	P. Clcy.
Des Moines	42	24	Foggy
Evans	56	36	Clear
Helena	42	39	Clear
Los Angeles	64	52	Clear
Marshfield	52	34	Clear
Phoenix	79	44	Clear
Portland	52	38	Cloudy
Red Bluff	58	49	Clear
Roseburg	52	34	Cloudy
Salt Lake	52	39	Snow
San Francisco	60	50	Clear
San Jose	59	39	Clear
Seattle	59	49	Cloudy
Spokane	48	32	Clear
Walla Walla	52	36	Clear
Winnipeg	36	32	Cloudy

W. J. Hutchinson, Meteorologist.

Wall Street Report

NEW YORK, Feb. 20.—(AP)—Fresh buying came into the stock market today, rallying active issues \$1 to \$2 and some of the volatile shares \$4 to \$10.

Trading in the first half hour amounted to 700,000 shares, a heavy volume, but the turnover thereafter was smaller, although considerably above yesterday's. Utility, food and chemical stocks were favored. United States Steel, after touching the new 1931 high of \$119, lost its 75-cent rise and became sluggish, but the market got along without support from this old favorite.

Other shares making new highs included National Biscuit, Allied Chemical, International Telephone, Radio, American Can, DePoni, Borden, General Electric and International Harvester. Allied Chemical's gain was more than \$10. A. M. Byers rose \$5.

Today's closing prices for 15 selected stocks follow:

Am. Can	125 1/4
Am. Tel. & Tel.	197 3/4
Anacosta	39 1/2
Col. Gas	49 1/2
Continental	41 1/2
General Electric (new)	61 1/2
General Motors	43 1/2
Kennecott Copper	29 1/2
Mont. Ward	23 1/2
Radio Corporation	29 1/2
Int. T. & T.	75 1/2
Sears Roebuck	57 1/2
S. P.	107 1/2
United Aircraft	51
U. S. Steel	117 1/2

DAHACK PROBE CHIEF SOON TO RESUME HERE

Assistant Attorney General Moore Recovering Health Is Report to Judge Norton.

A telephone message was received yesterday from Salem by Circuit Judge H. D. Norton stating that Willis Moore, assistant attorney general, assigned to the special grand jury investigation into the death of Everett Dahack, Eagle Point, last December during a raid on a moonshine still on Reese Creek, was convalescing rapidly.

No definite date has been given for the resumption of the quiz, but at his present rate of recovery Attorney Moore will be able to return to active duty within two weeks at the latest. He is now able to do light work at his desk daily.

No new grand jury will be drawn for the inquiry, but an order will probably be made Tuesday next, when the new circuit court term starts, continuing the special grand jury of which J. J. Skinner of this

city is foreman. This grand jury has already heard a number of witnesses.

It will also act as the regular grand jury, before and after the Dahack investigation, as the law prohibits two grand juries being operative at the same time.

Circuit Judge Norton will clear the legal decks so the special investigation can proceed without delay whenever Assistant Attorney General Moore's health will permit.

There will be no session of the circuit court Monday, Washington's birthday and a legal holiday.

Quite a number of the Medford wrestling fans are planning to attend the Jacksonville wrestling card tonight, presenting Ray Eysieck, 200 pounds, Medford, and Frenchy Levitt, 205, Medford, in a finish match. The men will wrestle for the championship of southern Oregon. The special event will present Cecil Harrick, local welterweight, and Otto Hantz, Portland matman.

The card is sponsored by Jimmy O'Brien and is sponsored by the Jacksonville chamber of commerce. It will begin at 8:30 in the old United States hall.

Six Drown
BUENOS AIRES, Feb. 20.—(AP)—Six persons have been drowned and much damage done in the Cor-

Choice Meats

For Your Sunday Dinner

Beef
Pork
Fine Fat Hens

"Good Meat Always at Low Prices"

Ivy St. Meat Market

Just Around the Corner from the Postoffice

Medford's Leading Store Since 1894 - Pay Less - Dress Better - We Give S & H Stamps.

Lingerie Bargains

Smart new crepe de chine undies—step-ins, combinations, bloomers and dance sets. Real M. M. values at

\$1.00

Van Raalte Hosiery

Beauty of design and rugged construction are combined in the newest spring offerings in famous Van Raalte hose assuring long satisfactory wear. Chiffon and service weights in two popular numbers.

\$1.50 and \$1.95

Kleenex Packages

Kleenex—the sanitary way to remove cosmetics—in attractive patterns and your favorite color.

25c

Figured Marquisette

36-inch marquisette with brightly colored designs—now priced very moderately for M. M. shoppers.

45c a yard

English Warp Prints

Smart English warp prints 50 inches wide, priced at

\$1.35 a yard

Panel Curtains

Marquisette panel curtains 36 inches wide. Exceptional value at yard

65c

Infants' Dresses

Just arrived! 60 dainty little dresses for infants in white with colors—fashioned in maderia with hand embroidery.

98c

Tomorrow! Very Low Prices For Smart Spring Coats and Dresses

Basement Specials

Bed Spreads

80x90 erinckle bed spreads in green, rose, gold or blue. Basement special

98c

Children's Shoes

A special bargain table of children's shoes. Your choice while this lot lasts, pair

\$1.00

Kiddies' Shoes

One of our basement tables is piled high with children's shoes. Included in this lot are calfskin shoes and oxfords—some with composition soles and rubber heels.

\$1.49

Our better shoes for children, sport styles and patents

\$1.98

Women's Novelty Shoes

Novelty shoes for dress and sport wear. Some replica trimmed, others kid trimmed with both leather and composition soles.

\$2.98

Women's Shoes In Our Basement

Reduced To Three Low Prices

\$2.69. \$2.98. \$3.48

Men's Overalls

Men's triple-stitch bib overalls, all sizes, pair

89c

Play Suits

Yank, Jr. play suits, priced at

85c

Play Suits

Blue denim, red trimmed overalls for children

79c

A Special Lot of Spring Coats

A glorious array of coats for spring which will prove especially appealing to fashion-wise women of southern Oregon—Coats rarely offered so early in the season at such moderate prices. The lot includes polo cloths, tweeds and other popular materials—some are fur trimmed, others plain—garments for sports and dress wear.

\$14.75 to \$49.50

DRESSES

Exquisitely fashioned dresses for early spring wear—You will be delighted with the beauty and color of this dress display—there's sure to be a frock to exactly meet your desires at prices you can afford to pay!

\$5.95

\$12.45 to \$24.50

Miss Spokane House Dresses

You will be agreeably surprised at the values offered in our new showings of Miss Spokane dresses, priced at

\$1.98 to \$3.95

FEDERAL OFFICERS VISITING MEDFORD

Maurice Smith, acting assistant federal prohibition administrator for the twelfth district, comprising

Alaska, Idaho, Montana, Oregon and Washington, with headquarters in Seattle, and H. K. Newell, deputy administrator for the state of Oregon, with headquarters in Portland, were in Medford today visiting the local office in the federal building in charge of L. I. Moon. The visitors are always glad to have an opportunity of visiting in sunny southern Oregon.

Opportunity!

Special Selling

Used Cars

late model

TOMORROW AND SUNDAY

<h4>MARQUETTE SEDAN</h4> <p>1930 Marquette Sedan. Nearly new. Had excellent care. Driven only short time.</p> <p style="font-size: 1.5em;">DOWN PAYMENT \$265</p>	<h4>CHEVROLET COACH</h4> <p>A wonderful value. Economical to run. 1929 model. Looks and runs like new. Very good tires.</p> <p style="font-size: 1.5em;">DOWN PAYMENT \$135</p>
<h4>HUDSON COACH</h4> <p>1926 Hudson Coach. Lots of transportation left in this car. Has had fine care. See this one!</p> <p style="font-size: 1.5em;">DOWN PAYMENT \$95</p>	<h4>BUICK SEDAN</h4> <p>1926 Buick Sedan. A good, sturdy car, nicely painted. Good rubber. A real chance to save!</p> <p style="font-size: 1.5em;">DOWN PAYMENT \$145</p>
<h4>OLDSMOBILE COACH</h4> <p>1926 Oldsmobile Coach. Nearly new. Runs fine. Looks good. A real bargain at this price.</p> <p style="font-size: 1.5em;">DOWN PAYMENT \$70</p>	<h4>STUDEBAKER ROADSTER</h4> <p>A fine value in this Studebaker. Good looking, runs fine—good tires. Be sure to see it!</p> <p style="font-size: 1.5em;">DOWN PAYMENT \$55</p>

Many others to choose from! Your car may make the down payment. BUY ON OUR EASY PAYMENT PLAN.

Scherer Motor Co.

Salesroom 38 N. Riverside Phone 73 Open Evenings and Sundays

WHEN BETTER AUTOMOBILES ARE BUILT, BUICK WILL BUILD THEM