

"EVERYONE IN SOUTHERN OREGON READS THE MEDFORD MAIL TRIBUNE"

FARM LOANS TO BE CHECKED TO CURB IT'S USES

Needy Loans Will Get First Payment Soon - No Funds To Increase Major Crops.

WASHINGTON, Feb. 7.—Application blanks for loans from the \$45,000,000 federal feed, seed and fertilizer fund have been forwarded to county agricultural agents in the 1930 drought and storm area. They are to be issued only to those farmers who suffered material damage and who have no other source of credit.

Each applicant will sign a note for the loan he desires, and at the same time, in most states, give a mortgage on his 1931 crop to secure its repayment.

Next Determines Amount The extent to which the applicant incurred damages from the drought or storms during the last season will be the principal basis on which his eligibility for a loan will be determined.

He will agree to use the loan for the purchase of seed, fertilizer, feed for work stock, and fuel and oil for tractors. No provision is made for the use of loans to purchase human foods.

When the applicant has completed his application, note and mortgage, the papers will be turned over to the county advisory committee, consisting of a leading banker and two prominent farmers who serve without pay.

They will determine whether the applicant has necessary power and machinery to produce the crops he proposes to plant, what his reputation is as a farmer, and whether he can be expected to use his best efforts to produce a crop and repay the loan.

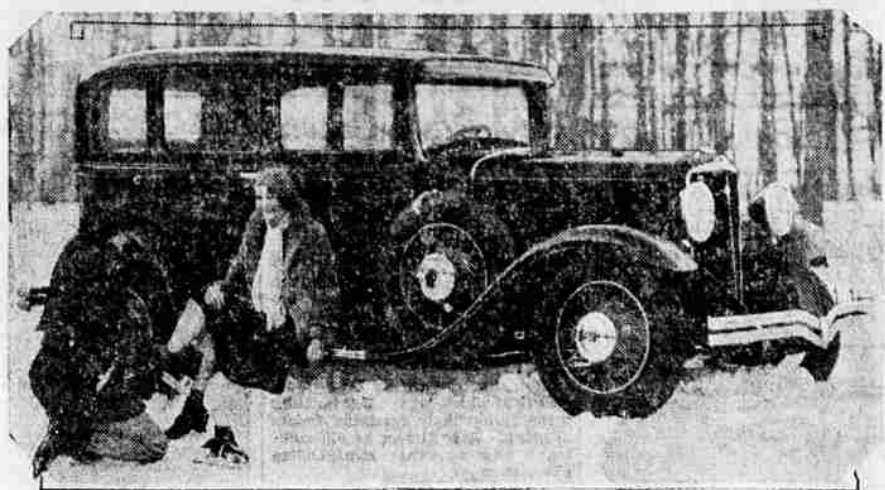
They then will make a definite recommendation to the department of agriculture, the field office which disburses the loans.

Check on Use of Money The field office will examine the papers promptly and determine the amount of the loan. This will be based on needs of the individual for seed and fertilizer for the acreage and crops he proposes to plant, and for feed for work stock necessary to produce the crops.

Loans may be approved for an amount less than that requested by the applicant.

When a loan is approved a check will be drawn to the borrower in the amount of the first installment of the loan. Before a second installment is paid, the borrower will be asked to show how he has expended the first \$25 loan will be made to a farmer to increase his major crop acreages.

New Small Studebaker Offers Free Wheeling



Studebaker's new six of 70 horsepower is claimed to be the lowest priced car in the world which may be obtained with free wheeling. This engineering advancement is now found in all Studebaker cars as well as many other makes, including America's two finest cars—Pierce-Arrow and Lincoln. The model illustrated is the Studebaker Six Regal Sedan.

How Insects Affect Geography

WASHINGTON, D. C., Feb. 7.—Ruling a modern empire is not wholly a matter of troops, treaties and trade agents; shock battalions of scientists may be required to combat native enemies far more menacing than an uprising of aborigines, according to a bulletin from the Washington, D. C., headquarters of the National Geographic Society.

For example, in eastern Africa, the British recently captured 1,293 enemies in a day—dread insect enemies, tsetse flies, which were caught in eighteen imitation animal traps.

Wiping Before Flies The tsetse fly lives in the bush, and when an animal wanders into the bush and is infested by the insect, the natives flee the region just as they did before the swarms of the locusts of Bible times and do in present day history. Only the tsetse fly is a much deadlier enemy than the locust. It has effectively wiped out habitations of the modern world, as was in Tanganyika as large as California, and regions as extensive as other of our states in Rhodesia, Nyasaland, Uganda and Zululand.

Throughout these units of Britain's political domain, cultivated patches of land have been abandoned, farms and pastures have gone back to the bush, and the tsetse fly has become a pest.

Insects That Fight Literacy "Invisible insect pests are common to all continents—except the Antarctic—and they are prevalent in even the most civilized, modern cities. Witness the common house fly, and the cockroach. Their attack is not so direct as that of the jungle animal or the modern death, but it can be just as deadly. Some destroy food, others spread disease germs, or they attack the foods and animals which are of high property value to mankind.

The cockroach even assaults man's cultural achievements and some of his most cherished institutions, by its appetite for the paste on book covers in libraries and also for the paste used in the wall paper of his home. Sleeping sailors aboard ships, the roach will rob, often wear gloves to thwart cockroaches that gnaw fingers.

Flies Breed In Horse's Stomach "Go to a farm, with a screened porch and kitchen, and your agricultural host may tell a story which will give you a new use at the Ashland spring musical festival. Then they will make them into booklets ready for use. We expect to begin learning more of the songs on next Friday morning.

The agriculture class have for special study topic this week, "Cattle." We have heard some very interesting reports.

This week we have made a special effort toward tidying up and beautifying our school grounds. The boys are just about ready to

the larvae of the gypsy moth, and it is some of that moth's cousins who rob apple growers, corn planters, and flour millers of thousands of dollars annually.

Every vacationer knows or should know—the pest of the mosquitoes, Europeans and Americans, too, had to arm themselves with refrigeration and quinine before they could invade the tropics. The quinine, because the major tropical enemy of the white man is the mosquito, dispersing its yellow fever and malarial germs. It has been said that quinine and sanitation enabled Americans to hold the Panama canal. And quinine is such an essential equipment of British rule in India that the postman is as ready to sell the bitter white powder as he is to dispense postage stamps.

Many prosperous ports of Central America today, where ships load and unload, and airplanes come and go, owe their prosperity to the battle science has fought against the mosquito, which once kept away vessels and visitors as effectively as machine guns.

A Geographic Medley "A geographic medley of foreign insects join domestic species in their depredations in the United States. The boll weevil speared across the Rio Grande in 1902 and has since destroyed as many as 4,000,000 bales of cotton in a single year. Shade tree leaves and fruits tempt the palette of the voracious Mexican bean beetle, the so-called bad girls of the lady bug family and they have joined the boll weevil in the southern states.

The European corn borer found America a hard "chewing with milk and honey" in 1917. Now choice bits of thousands of dollars worth of vegetables are devoured by the pest. The German contribution to the formidable array of our foreign insect enemies is the Hessian fly that has been harassing American farmers since they arrived here in the straw mattresses of Hessian soldiers in colonial times.

"Gloomy days" were spent last winter by citrus fruit growers of Florida when they saw their oranges and grape fruit destroyed by the Mediterranean fruit fly. Meanwhile the Japanese beetle, which first invaded New Jersey farms several years ago, continued to increase the fortune already spent by the United States, state and county governments to keep it under control.

"Grain growing regions of the world lose millions of dollars' worth of grain annually due to the depredations of the cinch bug. Destruction of 2,000,000 acres of vineyards by a member of the cinch bug family several years ago, will long be remembered by French vineyardists.

The locust has no respect for geography. While one swarm is invading the East, another is swooping down on vegetation in the West. In 1874 and 1876 locusts destroyed millions of dollars' worth of agricultural products in their migration from Canada to Texas. Natives of Madagascar complain of losses incurred by locust invasions by capturing quantities of the insect for their medicinal uses.

complete their task of setting evergreens, the holes are dug and the trees up, ready to set.

At a student body meeting on Monday morning plans were laid for a Valentine party for Friday evening, February 12. Following committees were appointed: Entertainment, Robert Cherry, Billy King, Marle Guehes and Mary Fink; refreshment, Helen Judy, Helen Snyder, Alice Cherry, and Anna Scheel.

Joyce Durham and Florence Meadows have nearly completed a "Puppet Show" demonstrating "Good Health." It is very clever. Joyce has written the playlet. The characters are: Teacher, two mothers, doctor, and children. Scene 1—At Home; scene 2—At School. We expect to enjoy it at the student body meeting next Monday morning.

Intermediate Room Francis Moravet has returned to school again for the first time since the Christmas vacation. We are very glad to have her with us again.

Katherine Youmans returned on Monday after being confined to her home with the mumps.

Plans are being made for a Valentine party. Both Kings, Ruth Hill, Nellie Mack, and Winona Cook were appointed on the re-

for the last three weeks. We are going to make some good looking ones for the fair.

Miss Hunsong, our teacher, is back again in school after a two-weeks' illness. She is very glad to return to all her children and be with them again.

Schafer Enlarges Motor Repair Shop

L. C. Schafer, Medford's exclusive electric motor repairman, is far from being a pessimist regarding the valley's future.

While still located in the basement of the Medford building, corner Sixth and Central, he has taken larger and better quarters, with an added outside entrance on Sixth street. New equipment is also being installed.

Being the only exclusive electric motor and generator repair shop in southern Oregon, Mr. Schafer is equipped to give excellent service in this line.

Having overhauled and repaired many of the larger electrical installations in the adjoining counties, northern California and the Rogue River valley demonstrates his ability in this work.

Dawson Establishes Grinding Shop Here

At the Shell service station, corner Sixth and Front, J. H. Dawson has installed an up-to-date filing and grinding shop. The shop has a full line of electric machinery, including a Foley saw filer and a saw re-toothing machine. Mr. Dawson has a wide experience in the class of work coming here from the east where he did considerable work for industrial education departments.

SPAIN TO SOOTHE DISLOYAL ARMYMEN WITH EXTRA CASH

MADRID, Feb. 7.—(AP)—The Republican government has appropriated money for an expansion of Spanish aviation, believing that it will thereby attract rebellious discontent in the air corps.

This is the method since applied successfully to counter-attacking military men into staunch monarchists.

The artillery corps had been virtually disbanded after fostering outbreaks, but when Berenguer came into power the corps was reconstituted, and has since been a bulwark of the government.

Discontent began to manifest itself in the air corps in 1930, when a rigid policy of economy was applied to it. Little money was available for gas and oil, so pilots remained on the ground and fumed as they lost liberal bonuses paid for each hour aloft.

Following Major Ramon Franco's abortive and monarchist attempt in December, an inquiry into the revolt's causes led to the conclusion that more flying and later pay envelopes would solve the difficulties.

Astronomers are unable to explain a red flash which is spreading over the face of Jupiter. We suppose it is useless to suggest that modern novel has somehow found its way up there.—The Humorist.

NEW TRUCK HAS SIX SPEEDS FOR VARIOUS DUTIES

The International Harvester Company of America have announced a very drastic price reduction in their new 1 1/2-ton six speed special motor truck.

The new International six speed special 1 1/2-ton truck incorporates all of the desirable characteristics of its predecessor and, at the same time, has many new features which make it the outstanding truck in its class.

New power and better performance have been made possible in the six speed special through improvements in engine, clutch, transmission, and in the famous two-speed axle. Added power and improved performance have in no way affected the six speed special's operating economy. High gasoline mileage and unusually low oil consumption are still outstanding features of this truck.

The six speed special's 136-inch wheelbase, 102 1/2-in. track, 172 in. in displacement, N. A. C. rating, 10, H. P.; brake H. P. 20.4 at 2,000 RPM. Three-point mounting with rubber-cushioned rear supports. Three bronze-backed hub-and-spoke wheels. Total projected area, 12.75 sq. ft. rear, 28.75 sq. ft. connecting rod, 28 1/2-in. in. lubrication. Pressure feed to all main, camshaft and connecting rod bearings. Gear type, easy driven oil pump. Oil capacity 4 quarts. Pressure gun lubrication throughout on chassis.

Frame: Pressed steel channel. Depth, 7 1/2-in.; thickness, 3/16 in. width, 2 1/2 in.; width of flange, 2 1/2 inches. Spiral of floor 2 1/2 in. in. displacement, N. A. C. rating, 10, H. P.; brake H. P. 20.4 at 2,000 RPM. Three-point mounting with rubber-cushioned rear supports. Three bronze-backed hub-and-spoke wheels. Total projected area, 12.75 sq. ft. rear, 28.75 sq. ft. connecting rod, 28 1/2-in. in. lubrication. Pressure feed to all main, camshaft and connecting rod bearings. Gear type, easy driven oil pump. Oil capacity 4 quarts. Pressure gun lubrication throughout on chassis.

Frame: Pressed steel channel. Depth, 7 1/2-in.; thickness, 3/16 in. width, 2 1/2 in.; width of flange, 2 1/2 inches. Spiral of floor 2 1/2 in. in. displacement, N. A. C. rating, 10, H. P.; brake H. P. 20.4 at 2,000 RPM. Three-point mounting with rubber-cushioned rear supports. Three bronze-backed hub-and-spoke wheels. Total projected area, 12.75 sq. ft. rear, 28.75 sq. ft. connecting rod, 28 1/2-in. in. lubrication. Pressure feed to all main, camshaft and connecting rod bearings. Gear type, easy driven oil pump. Oil capacity 4 quarts. Pressure gun lubrication throughout on chassis.

Frame: Pressed steel channel. Depth, 7 1/2-in.; thickness, 3/16 in. width, 2 1/2 in.; width of flange, 2 1/2 inches. Spiral of floor 2 1/2 in. in. displacement, N. A. C. rating, 10, H. P.; brake H. P. 20.4 at 2,000 RPM. Three-point mounting with rubber-cushioned rear supports. Three bronze-backed hub-and-spoke wheels. Total projected area, 12.75 sq. ft. rear, 28.75 sq. ft. connecting rod, 28 1/2-in. in. lubrication. Pressure feed to all main, camshaft and connecting rod bearings. Gear type, easy driven oil pump. Oil capacity 4 quarts. Pressure gun lubrication throughout on chassis.

Frame: Pressed steel channel. Depth, 7 1/2-in.; thickness, 3/16 in. width, 2 1/2 in.; width of flange, 2 1/2 inches. Spiral of floor 2 1/2 in. in. displacement, N. A. C. rating, 10, H. P.; brake H. P. 20.4 at 2,000 RPM. Three-point mounting with rubber-cushioned rear supports. Three bronze-backed hub-and-spoke wheels. Total projected area, 12.75 sq. ft. rear, 28.75 sq. ft. connecting rod, 28 1/2-in. in. lubrication. Pressure feed to all main, camshaft and connecting rod bearings. Gear type, easy driven oil pump. Oil capacity 4 quarts. Pressure gun lubrication throughout on chassis.

Frame: Pressed steel channel. Depth, 7 1/2-in.; thickness, 3/16 in. width, 2 1/2 in.; width of flange, 2 1/2 inches. Spiral of floor 2 1/2 in. in. displacement, N. A. C. rating, 10, H. P.; brake H. P. 20.4 at 2,000 RPM. Three-point mounting with rubber-cushioned rear supports. Three bronze-backed hub-and-spoke wheels. Total projected area, 12.75 sq. ft. rear, 28.75 sq. ft. connecting rod, 28 1/2-in. in. lubrication. Pressure feed to all main, camshaft and connecting rod bearings. Gear type, easy driven oil pump. Oil capacity 4 quarts. Pressure gun lubrication throughout on chassis.

Frame: Pressed steel channel. Depth, 7 1/2-in.; thickness, 3/16 in. width, 2 1/2 in.; width of flange, 2 1/2 inches. Spiral of floor 2 1/2 in. in. displacement, N. A. C. rating, 10, H. P.; brake H. P. 20.4 at 2,000 RPM. Three-point mounting with rubber-cushioned rear supports. Three bronze-backed hub-and-spoke wheels. Total projected area, 12.75 sq. ft. rear, 28.75 sq. ft. connecting rod, 28 1/2-in. in. lubrication. Pressure feed to all main, camshaft and connecting rod bearings. Gear type, easy driven oil pump. Oil capacity 4 quarts. Pressure gun lubrication throughout on chassis.

Frame: Pressed steel channel. Depth, 7 1/2-in.; thickness, 3/16 in. width, 2 1/2 in.; width of flange, 2 1/2 inches. Spiral of floor 2 1/2 in. in. displacement, N. A. C. rating, 10, H. P.; brake H. P. 20.4 at 2,000 RPM. Three-point mounting with rubber-cushioned rear supports. Three bronze-backed hub-and-spoke wheels. Total projected area, 12.75 sq. ft. rear, 28.75 sq. ft. connecting rod, 28 1/2-in. in. lubrication. Pressure feed to all main, camshaft and connecting rod bearings. Gear type, easy driven oil pump. Oil capacity 4 quarts. Pressure gun lubrication throughout on chassis.

Frame: Pressed steel channel. Depth, 7 1/2-in.; thickness, 3/16 in. width, 2 1/2 in.; width of flange, 2 1/2 inches. Spiral of floor 2 1/2 in. in. displacement, N. A. C. rating, 10, H. P.; brake H. P. 20.4 at 2,000 RPM. Three-point mounting with rubber-cushioned rear supports. Three bronze-backed hub-and-spoke wheels. Total projected area, 12.75 sq. ft. rear, 28.75 sq. ft. connecting rod, 28 1/2-in. in. lubrication. Pressure feed to all main, camshaft and connecting rod bearings. Gear type, easy driven oil pump. Oil capacity 4 quarts. Pressure gun lubrication throughout on chassis.

Frame: Pressed steel channel. Depth, 7 1/2-in.; thickness, 3/16 in. width, 2 1/2 in.; width of flange, 2 1/2 inches. Spiral of floor 2 1/2 in. in. displacement, N. A. C. rating, 10, H. P.; brake H. P. 20.4 at 2,000 RPM. Three-point mounting with rubber-cushioned rear supports. Three bronze-backed hub-and-spoke wheels. Total projected area, 12.75 sq. ft. rear, 28.75 sq. ft. connecting rod, 28 1/2-in. in. lubrication. Pressure feed to all main, camshaft and connecting rod bearings. Gear type, easy driven oil pump. Oil capacity 4 quarts. Pressure gun lubrication throughout on chassis.

Frame: Pressed steel channel. Depth, 7 1/2-in.; thickness, 3/16 in. width, 2 1/2 in.; width of flange, 2 1/2 inches. Spiral of floor 2 1/2 in. in. displacement, N. A. C. rating, 10, H. P.; brake H. P. 20.4 at 2,000 RPM. Three-point mounting with rubber-cushioned rear supports. Three bronze-backed hub-and-spoke wheels. Total projected area, 12.75 sq. ft. rear, 28.75 sq. ft. connecting rod, 28 1/2-in. in. lubrication. Pressure feed to all main, camshaft and connecting rod bearings. Gear type, easy driven oil pump. Oil capacity 4 quarts. Pressure gun lubrication throughout on chassis.

Frame: Pressed steel channel. Depth, 7 1/2-in.; thickness, 3/16 in. width, 2 1/2 in.; width of flange, 2 1/2 inches. Spiral of floor 2 1/2 in. in. displacement, N. A. C. rating, 10, H. P.; brake H. P. 20.4 at 2,000 RPM. Three-point mounting with rubber-cushioned rear supports. Three bronze-backed hub-and-spoke wheels. Total projected area, 12.75 sq. ft. rear, 28.75 sq. ft. connecting rod, 28 1/2-in. in. lubrication. Pressure feed to all main, camshaft and connecting rod bearings. Gear type, easy driven oil pump. Oil capacity 4 quarts. Pressure gun lubrication throughout on chassis.

Frame: Pressed steel channel. Depth, 7 1/2-in.; thickness, 3/16 in. width, 2 1/2 in.; width of flange, 2 1/2 inches. Spiral of floor 2 1/2 in. in. displacement, N. A. C. rating, 10, H. P.; brake H. P. 20.4 at 2,000 RPM. Three-point mounting with rubber-cushioned rear supports. Three bronze-backed hub-and-spoke wheels. Total projected area, 12.75 sq. ft. rear, 28.75 sq. ft. connecting rod, 28 1/2-in. in. lubrication. Pressure feed to all main, camshaft and connecting rod bearings. Gear type, easy driven oil pump. Oil capacity 4 quarts. Pressure gun lubrication throughout on chassis.

Frame: Pressed steel channel. Depth, 7 1/2-in.; thickness, 3/16 in. width, 2 1/2 in.; width of flange, 2 1/2 inches. Spiral of floor 2 1/2 in. in. displacement, N. A. C. rating, 10, H. P.; brake H. P. 20.4 at 2,000 RPM. Three-point mounting with rubber-cushioned rear supports. Three bronze-backed hub-and-spoke wheels. Total projected area, 12.75 sq. ft. rear, 28.75 sq. ft. connecting rod, 28 1/2-in. in. lubrication. Pressure feed to all main, camshaft and connecting rod bearings. Gear type, easy driven oil pump. Oil capacity 4 quarts. Pressure gun lubrication throughout on chassis.

Frame: Pressed steel channel. Depth, 7 1/2-in.; thickness, 3/16 in. width, 2 1/2 in.; width of flange, 2 1/2 inches. Spiral of floor 2 1/2 in. in. displacement, N. A. C. rating, 10, H. P.; brake H. P. 20.4 at 2,000 RPM. Three-point mounting with rubber-cushioned rear supports. Three bronze-backed hub-and-spoke wheels. Total projected area, 12.75 sq. ft. rear, 28.75 sq. ft. connecting rod, 28 1/2-in. in. lubrication. Pressure feed to all main, camshaft and connecting rod bearings. Gear type, easy driven oil pump. Oil capacity 4 quarts. Pressure gun lubrication throughout on chassis.

Frame: Pressed steel channel. Depth, 7 1/2-in.; thickness, 3/16 in. width, 2 1/2 in.; width of flange, 2 1/2 inches. Spiral of floor 2 1/2 in. in. displacement, N. A. C. rating, 10, H. P.; brake H. P. 20.4 at 2,000 RPM. Three-point mounting with rubber-cushioned rear supports. Three bronze-backed hub-and-spoke wheels. Total projected area, 12.75 sq. ft. rear, 28.75 sq. ft. connecting rod, 28 1/2-in. in. lubrication. Pressure feed to all main, camshaft and connecting rod bearings. Gear type, easy driven oil pump. Oil capacity 4 quarts. Pressure gun lubrication throughout on chassis.

Frame: Pressed steel channel. Depth, 7 1/2-in.; thickness, 3/16 in. width, 2 1/2 in.; width of flange, 2 1/2 inches. Spiral of floor 2 1/2 in. in. displacement, N. A. C. rating, 10, H. P.; brake H. P. 20.4 at 2,000 RPM. Three-point mounting with rubber-cushioned rear supports. Three bronze-backed hub-and-spoke wheels. Total projected area, 12.75 sq. ft. rear, 28.75 sq. ft. connecting rod, 28 1/2-in. in. lubrication. Pressure feed to all main, camshaft and connecting rod bearings. Gear type, easy driven oil pump. Oil capacity 4 quarts. Pressure gun lubrication throughout on chassis.

Frame: Pressed steel channel. Depth, 7 1/2-in.; thickness, 3/16 in. width, 2 1/2 in.; width of flange, 2 1/2 inches. Spiral of floor 2 1/2 in. in. displacement, N. A. C. rating, 10, H. P.; brake H. P. 20.4 at 2,000 RPM. Three-point mounting with rubber-cushioned rear supports. Three bronze-backed hub-and-spoke wheels. Total projected area, 12.75 sq. ft. rear, 28.75 sq. ft. connecting rod, 28 1/2-in. in. lubrication. Pressure feed to all main, camshaft and connecting rod bearings. Gear type, easy driven oil pump. Oil capacity 4 quarts. Pressure gun lubrication throughout on chassis.

Frame: Pressed steel channel. Depth, 7 1/2-in.; thickness, 3/16 in. width, 2 1/2 in.; width of flange, 2 1/2 inches. Spiral of floor 2 1/2 in. in. displacement, N. A. C. rating, 10, H. P.; brake H. P. 20.4 at 2,000 RPM. Three-point mounting with rubber-cushioned rear supports. Three bronze-backed hub-and-spoke wheels. Total projected area, 12.75 sq. ft. rear, 28.75 sq. ft. connecting rod, 28 1/2-in. in. lubrication. Pressure feed to all main, camshaft and connecting rod bearings. Gear type, easy driven oil pump. Oil capacity 4 quarts. Pressure gun lubrication throughout on chassis.

Frame: Pressed steel channel. Depth, 7 1/2-in.; thickness, 3/16 in. width, 2 1/2 in.; width of flange, 2 1/2 inches. Spiral of floor 2 1/2 in. in. displacement, N. A. C. rating, 10, H. P.; brake H. P. 20.4 at 2,000 RPM. Three-point mounting with rubber-cushioned rear supports. Three bronze-backed hub-and-spoke wheels. Total projected area, 12.75 sq. ft. rear, 28.75 sq. ft. connecting rod, 28 1/2-in. in. lubrication. Pressure feed to all main, camshaft and connecting rod bearings. Gear type, easy driven oil pump. Oil capacity 4 quarts. Pressure gun lubrication throughout on chassis.

Frame: Pressed steel channel. Depth, 7 1/2-in.; thickness, 3/16 in. width, 2 1/2 in.; width of flange, 2 1/2 inches. Spiral of floor 2 1/2 in. in. displacement, N. A. C. rating, 10, H. P.; brake H. P. 20.4 at 2,000 RPM. Three-point mounting with rubber-cushioned rear supports. Three bronze-backed hub-and-spoke wheels. Total projected area, 12.75 sq. ft. rear, 28.75 sq. ft. connecting rod, 28 1/2-in. in. lubrication. Pressure feed to all main, camshaft and connecting rod bearings. Gear type, easy driven oil pump. Oil capacity 4 quarts. Pressure gun lubrication throughout on chassis.

Frame: Pressed steel channel. Depth, 7 1/2-in.; thickness, 3/16 in. width, 2 1/2 in.; width of flange, 2 1/2 inches. Spiral of floor 2 1/2 in. in. displacement, N. A. C. rating, 10, H. P.; brake H. P. 20.4 at 2,000 RPM. Three-point mounting with rubber-cushioned rear supports. Three bronze-backed hub-and-spoke wheels. Total projected area, 12.75 sq. ft. rear, 28.75 sq. ft. connecting rod, 28 1/2-in. in. lubrication. Pressure feed to all main, camshaft and connecting rod bearings. Gear type, easy driven oil pump. Oil capacity 4 quarts. Pressure gun lubrication throughout on chassis.

Frame: Pressed steel channel. Depth, 7 1/2-in.; thickness, 3/16 in. width, 2 1/2 in.; width of flange, 2 1/2 inches. Spiral of floor 2 1/2 in. in. displacement, N. A. C. rating, 10, H. P.; brake H. P. 20.4 at 2,000 RPM. Three-point mounting with rubber-cushioned rear supports. Three bronze-backed hub-and-spoke wheels. Total projected area, 12.75 sq. ft. rear, 28.75 sq. ft. connecting rod, 28 1/2-in. in. lubrication. Pressure feed to all main, camshaft and connecting rod bearings. Gear type, easy driven oil pump. Oil capacity 4 quarts. Pressure gun lubrication throughout on chassis.

Frame: Pressed steel channel. Depth, 7 1/2-in.; thickness, 3/16 in. width, 2 1/2 in.; width of flange, 2 1/2 inches. Spiral of floor 2 1/2 in. in. displacement, N. A. C. rating, 10, H. P.; brake H. P. 20.4 at 2,000 RPM. Three-point mounting with rubber-cushioned rear supports. Three bronze-backed hub-and-spoke wheels. Total projected area, 12.75 sq. ft. rear, 28.75 sq. ft. connecting rod, 28 1/2-in. in. lubrication. Pressure feed to all main, camshaft and connecting rod bearings. Gear type, easy driven oil pump. Oil capacity 4 quarts. Pressure gun lubrication throughout on chassis.

Frame: Pressed steel channel. Depth, 7 1/2-in.; thickness, 3/16 in. width, 2 1/2 in.; width of flange, 2 1/2 inches. Spiral of floor 2 1/2 in. in. displacement, N. A. C. rating, 10, H. P.; brake H. P. 20.4 at 2,000 RPM. Three-point mounting with rubber-cushioned rear supports. Three bronze-backed hub-and-spoke wheels. Total projected area, 12.75 sq. ft. rear, 28.75 sq. ft. connecting rod, 28 1/2-in. in. lubrication. Pressure feed to all main, camshaft and connecting rod bearings. Gear type, easy driven oil pump. Oil capacity 4 quarts. Pressure gun lubrication throughout on chassis.

Frame: Pressed steel channel. Depth, 7 1/2-in.; thickness, 3/16 in. width, 2 1/2 in.; width of flange, 2 1/2 inches. Spiral of floor 2 1/2 in. in. displacement, N. A. C. rating, 10, H. P.; brake H. P. 20.4 at 2,000 RPM. Three-point mounting with rubber-cushioned rear supports. Three bronze-backed hub-and-spoke wheels. Total projected area, 12.75 sq. ft. rear, 28.75 sq. ft. connecting rod, 28 1/2-in. in. lubrication. Pressure feed to all main, camshaft and connecting rod bearings. Gear type, easy driven oil pump. Oil capacity 4 quarts. Pressure gun lubrication throughout on chassis.

Frame: Pressed steel channel. Depth, 7 1/2-in.; thickness, 3/16 in. width, 2 1/2 in.; width of flange, 2 1/2 inches. Spiral of floor 2 1/2 in. in. displacement, N. A. C. rating, 10, H. P.; brake H. P. 20.4 at 2,000 RPM. Three-point mounting with rubber-cushioned rear supports. Three bronze-backed hub-and-spoke wheels. Total projected area, 12.75 sq. ft. rear, 28.75 sq. ft. connecting rod, 28 1/2-in. in. lubrication. Pressure feed to all main, camshaft and connecting rod bearings. Gear type, easy driven oil pump. Oil capacity 4 quarts. Pressure gun lubrication throughout on chassis.

Frame: Pressed steel channel. Depth, 7 1/2-in.; thickness, 3/16 in. width, 2 1/2 in.; width of flange, 2 1/2 inches. Spiral of floor 2 1/2 in. in. displacement, N. A. C. rating, 10, H. P.; brake H. P. 20.4 at 2,000 RPM. Three-point mounting with rubber-cushioned rear supports. Three bronze-backed hub-and-spoke wheels. Total projected area, 12.75 sq. ft. rear, 28.75 sq. ft. connecting rod, 28 1/2-in. in. lubrication. Pressure feed to all main, camshaft and connecting rod bearings. Gear type, easy driven oil pump. Oil capacity 4 quarts. Pressure gun lubrication throughout on chassis.

Mail Tribune ads are read by 60,000 people every day

CLASSIFIED ADVERTISING RATES Rate per word for first insertion, 2c; each succeeding insertion, 1c; minimum, 25c. Index your ads with For Sale, For Rent, etc., and count their words as well as each initial, telephone number, etc., as a word.

Classified ads cash in advance and not taken over phone, unless advertiser has monthly account. For advance price per line.

WANTED—MISCELLANEOUS OLD BOOKS required, 20-cents guarantee, references. Tel. 150-8. 247

WANTED—One passenger to share expenses to San Francisco. 219

WANTED—Late model car. Write particulars. Box P. L., Tribune. 219

WANTED—2nd hand goods & junk. Pats, 1506 Prince, Ph. 447-L. 342

WANTED—To hear from good mining proposition for sale or lease. Box M. A., Tribune. 319

WANTED—Light reader; cash. F. L. Youville, Phone 112, Jacksonville, Ore. 313

WANTED—Patients, convalescents and elderly people to care for. Tel. 1322 of call at 7 S. Chestnut. 313

ASHLAND Convalescent and Rest Home, care for old people and invalids. 2101

FOR GARDEN and field plowing, sand, gravel and sediment, Tel. 242-J. Samuel Bateman. 11

RAW FURS WANTED—Do not wait, we pay the prices. Hides, wool and pelts, Medford Bargain House, 27 N. Grape St. 227

LOCAL or long distance hauling. We guarantee to save you money. Hawley Transfer, 619 No. Riverside, Phone 1044-N. 281

WANTED—Household goods, tools and junk, or what you want. Medford Bargain House, 27 N. Grape St. Phone 1063. 17

WANTED—SITUATIONS MIDDLE AGED woman wishes position as housekeeper for housewife people; elderly couple, will take care of children; good references. Phone 311-J or call at 260 1/2 Beatty St. 319

LOST—Brown purse containing money. Return to Tribune or Phone 1-13-N. Reward. 419