

IN OVER 6000 HOMES IN "COPCOLAND" MAY BE FOUND "PARTNERS"
OF THIS COMPANY IN WHOSE HOMES PREFERRED SHARES OF
THE CALIFORNIA OREGON POWER COMPANY ARE
COUNTED AMONG THE HIGHLY VALUED POSSESSIONS



"PARTNERS IN PROGRESS"

Medford's New Substation

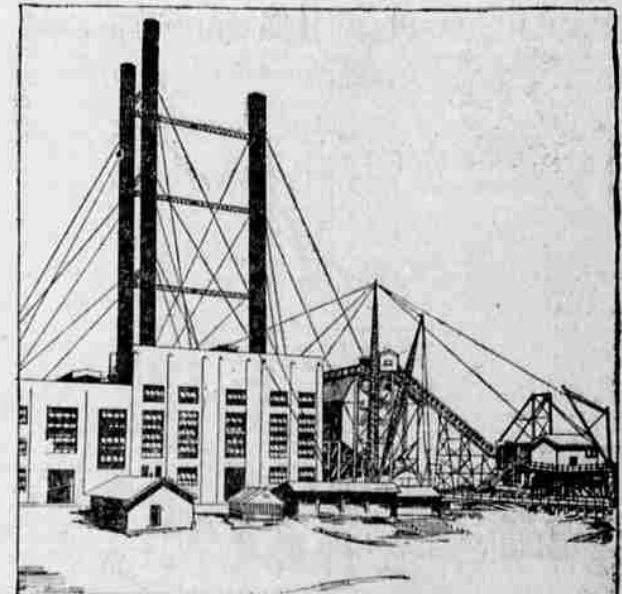
ONE OF COPCO'S 1930 ACHIEVEMENTS

THE completion of The California Oregon Power Company's fine new substation on East Jackson street in Medford again evidences the fact that this company is living up to its time-honored slogan: "Your Partners in Progress." This substation, one of the finest of its kind in the West, was built to meet the needs of one of the Northwest's most prosperous, most progressive and fastest growing communities . . . not only will our present patrons be better served but new industries will find their requirements for electric power amply filled. . . This company is constantly increasing and improving its facilities for the production and distribution of electric energy to keep pace with the progress of over 55 growing communities in "Copcoland" and to further assure substantial returns to over 6000 holders of Copco Preferred in this territory.

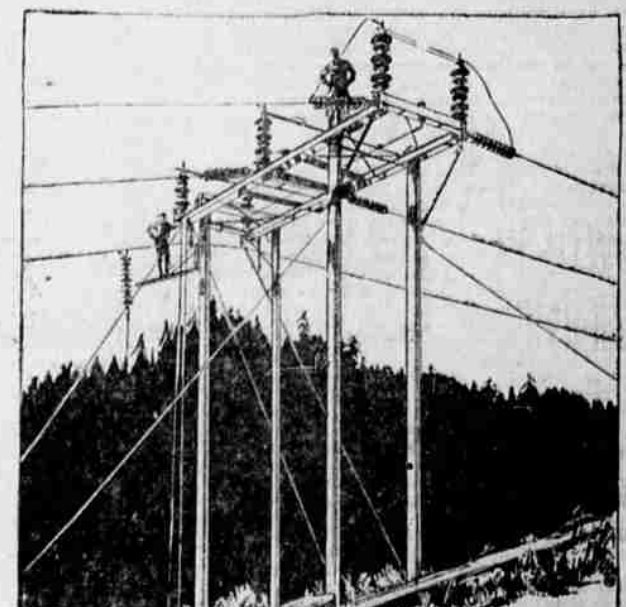
The CALIFORNIA OREGON POWER COMPANY



Oregon Projects Completed in 1930



General view of the newly completed Coos Bay Steam Electric Generating plant of the Mountain States Power Company at North Bend, which has been leased by The California Oregon Power Company.



Transmission tower on Line 20, new 110,000-volt line interconnecting The California Oregon Power Company transmission system with new Coos Bay plant.

