

Twenty-Fifth Year

MEDFORD, OREGON, WEDNESDAY, JULY 16, 1930.

No. 115.

## SPREAD OIL AUGUST 1ST IS REPORT

### Pole Removal Allows County Heating Plant Progress—Central Point Road No. 7 Will Be Widened and Straightened.

The Postal Telegraph company's pole, which stood serene in the middle of the right-of-way for a Southern Pacific spur to the road oil heating plant of Jackson county has finally been moved, and work on the construction of the spur and plant is now proceeding apace.

According to County Engineer Paul Ryming, the unraveling of the red tape around the pole, delayed the county road oiling program three weeks, but by hustling it will start about August 1st. The heating plant will be in operation by that date, and the first hot oil will be squirted on the unpaved portion of the Ruch highway, and the Sams Valley-Medford highway.

Preliminary coats of oil have been placed on both these roads. The final coat of oil is heated to a temperature of about 400 degrees, and is hauled to the work in asbestos covered tanks, to retain the torridity. The intense heat is necessary to receive the highest efficiency.

If present plans carry, it is hoped to apply oil this season to some of the rural roads, where

the dust flies thickest, and the travel is heaviest.

### To Improve C. P. Road

At the county court session this morning, the first reading of the proposal to widen, straighten, and gravel Central Point market road No. 7, extending from Central Point to the Crater Lake highway was read.

Miss Georgia Pruitt, a land owner along the route, attended the session, and was informed that the county would fix her fence, and transplant the hedge in her front yard. Miss Pruitt explained that the straightening of the road whacked about five feet from her front yard, and she was anxious to know if the damage would be repaired. Assured that it would be, Miss Pruitt entered no further protest.

The county will start preliminary work on the road within a week or ten days. The road at present is narrow and full of sharp curves, and there is considerable fence moving and changing of channels of irrigation ditches to be done.

It was also reported that the work of grading and graveling of several roads in the Prospect district had been about completed, funds for which were secured by special levies.

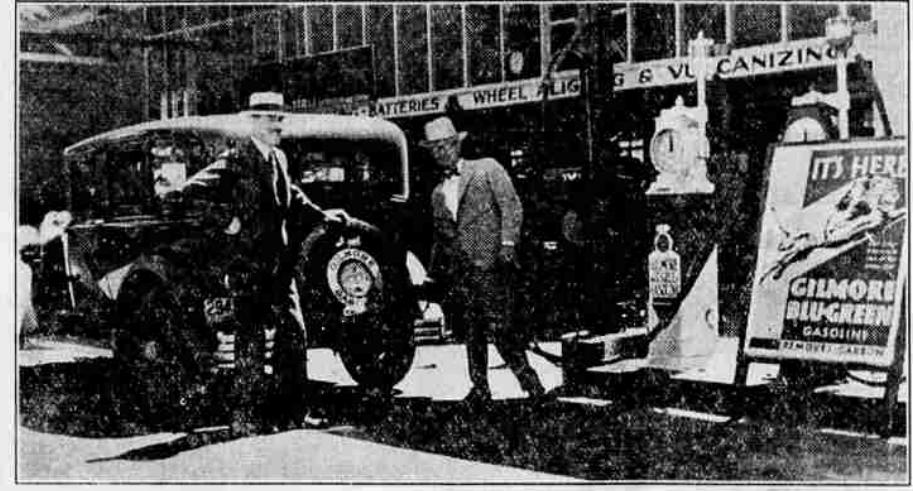
The remainder of the mid-week session of the county court was devoted to the transaction of routine business and matters.

## INSTALL OFFICERS OF I. O. O. F. LODGE

The following officers for Medford lodge I. O. O. F. for the current six months' term were installed last night by Frank Thompson, D. D. G. M., and staff of Central Point:

N. A. Mead, noble grand; O. O. Hull, vice grand; G. J. Prescott, R. S. N. G.; L. T. Dike, L. S. N. G.; E. D. Scripser, R. S. V. G.; S. L. Bateman, L. S. V. G.; Ed. Fryman, warden; Charles Crow, conductor.

## Mayor Pipes Pumping First Gallon Blue-Green Gasoline



The Gilmore Oil Co., Ltd., which recently entered the Pacific Northwest and announced plans of expansion and development that calls for an expenditure in excess of \$1,000,000 a year, recently opened a branch in Medford, and Don McPherson, manager of the Pacific Northwest territory, was greeted by Mayor Pipes, who pumped the first gallon from the big red and cream colored pump.

"Since we started distribution of our patented 'Gilmore Blue-Green Gasoline' in Oregon, two months ago, we have had innumerable requests from independent service stations in Medford for it. We immediately made a survey of this market and decided to provide distribution and sales facilities to serve this territory, says Mr. McPherson.

"Gilmore Blue-Green Gasoline is different from all other gasolines. It is treated with a patented formula that gives it the desired properties otherwise absent in gasolines that are not so treated. The ingredients that are added also give it the peculiar blue-green color from which its name is derived.

This ingredient attacks carbon, loosens it up and causes it to be discharged from the motor with the exhaust gases.

"Sales of our gasoline have now passed the 7,000,000 gallons per month point, and are continuing their sensational increase, and our gasoline sales have outstripped all others in ratio of increase. The Gilmore Oil Co., Ltd., is the one large independent oil company, and the oldest now on the Pacific coast, and we propose to always remain an independent and favor independent service station owners."

## BIRDSEYE CREEK MINE PURCHASED BY SALEM GROUP

GOLD HILL, Ore., July 16.—(Spl.)—Phil Robinson has sold his mine, "The Wedge," on Birdseye creek, to Salem capitalists. The company has organized and renamed the mine "The Maybelle Mining Company."

At the present time they are working 19 men and expect to increase the payroll. Five truck loads of machinery have been brought in, three from Portland and two from Los Angeles. They are building roads and preparing for a 1900-foot tramway.

## ALICE McNOUGHT DIES IN PORTLAND

PORTLAND, July 16.—(A)—Mrs. Alice M. McNaught, state president of the Jackson club, Democratic candidate for state representative, and life-long supporter of the labor movement, is dead at her home here. She was at one time associated with the late Samuel P. Gompers in organization work, and was an early advocate of women's suffrage and an active exponent of public welfare measures.

## NEW LINE PHILCOS ON DISPLAY HERE

Radio's latest and most outstanding achievements are on exhibition here, says Clay Witham. The remarkable new engineering triumph, tone control, which is introduced for the first time in the new Philco sets, is a feature of the display.

Perfectly by Philco engineers, it allows the set owner to regulate the tone of the programs he receives exactly as he prefers them, giving him an opportunity to inject his own personality into the programs he receives. They are four tone settings, running the range from brilliant tone, through bright and mellow stages, to deep tone, in which the bass instruments are emphasized.

Another feature of the new models is the station recording dial, which permits the set owner to write in the names of the stations he gets right on the dial itself, so that when tuning in he need not refer to kilocycle numbers but refers directly to the name of the station.

The Philco electro-dynamic speaker has been greatly improved; the new combination radio and phonograph model includes an induction disc motor perfected and offered for the first time and an electric pick-up that was developed only after months of intensive research work.

The furniture in which Philco's extraordinary sets are housed are beautiful pieces of cabinet work. Many other new features are included in the new line, which may be seen at Witham's Super Service Station, Eighth and Riverside.

## BUSINESS MEN WILL BE TEXT AT C-C FORUM

Colvin B. Brown, manager of the commercial organization department of the Chamber of Commerce of the United States, one of the foremost authorities of the country on cooperation in industrial



and commercial activities, who will address the Medford Chamber of Commerce noon forum next Friday.

He will take for his text "The Business Man and His City"—a review of what organized business is doing to develop the communities in which his activities are carried on and to solve its common problems.

Mr. Brown is probably the most outstanding authority on commercial organization affairs in the United States. He follows closely developments in this field in every section of the country, travelling every year many thousands of miles and his counsel is sought by chambers of commerce in the small towns as well as in the largest cities.

He expresses the conviction, based on his wide experience that the commercial organization or chamber of commerce movement is emerging from its formative stage and is constantly developing along more practical lines.

VALE—Highway in this vicinity will be opened by J. C. Compton.

PORTLAND—Lido grocery opened for business.

MONMOUTH—Stretch of highway north of town will be improved in near future.

## A DIFFERENT METHOD SAVES THE FULL FLAVOR



Tempting, fragrant cups of coffee—charming touch of good living. How satisfying they are when it's M.J.B. You just naturally relish this smoother, richer coffee flavor.

## M·J·B HI-TEST VACUUM COFFEE

Hear M.J.B.'s "Demi-Tasse Revue" every Wednesday, 8:30 to 9 p. m., over KOIN and Columbia Network.

## Claudette Colbert's CLOSE-UP TEST-



CLAUDETTE COLBERT  
Paramount star, "Lux Toilet Soap keeps skin smooth for the close-up." YOU, too, have a close-up test to pass!

and Yours

There's Witchery in Lovely Skin . . . says Hollywood

HOW people thrill to the charm of a beloved star when the revealing close-up brings her NEAR. A severe test of beauty, 45 Hollywood directors declare, that only the girl with exquisite skin can pass.

That is why the famous stars take devoted care of their skin with Lux Toilet Soap. "It takes such beautiful care of our skin," say 511 of the 521 important Hollywood actresses who use it regularly.

YOU will want to try it. For you, too, have a close-up test to pass! Admiring eyes close to YOUR skin must find it

temptingly soft and smooth—alluringly lovely in the most trying light.

Use this fragrant white soap for the close-up complexion every girl wants. Order some and begin today.



JOSEPHINE DUNN,  
popular M. G. M. star:  
"It's so refreshing!"



LOIS MORAN, beloved Fox star: "I always use it. It's a joy."

## LUX Toilet Soap—10¢

## 8% DIVIDEND PREPAID STOCK

Class F

Shares in this class of stock are purchased at \$60.00 and mature at \$100.00 in approximately 78 months without further payments. An earning of \$40.00 over that period of time indicates a higher rate of return than offered by any investment plan with the same high safety factor.

This investment plan is designed for the person desiring to reinvest the semi-annual dividend in the most convenient manner.

## JACKSON COUNTY BUILDING & LOAN ASSOCIATION

Organized 1909



30 North Central