

# COUNTY COURT TO WATCH AID FOR INDIGENTS

Fading Funds Will Be Nursed for Hard Winter—Local Poor Get First Call, Is Word.

In anticipation of a long hard winter, and many calls for financial aid, the county court has started its annual retrenchment of the indigent fund, upon which heavy inroads have been made the past six months. The original amount allowed was \$25,000, for the poor farm, hospitalization, widow's pensions and general indigent fund.

indigent list. Few, if any, will be cut entirely from the list, but the fast fading fund will be nursed, with the strictest economy, to the end that it will not be exhausted when cold weather comes.

Approximately half of the indigent fund has been expended to date, and at the present rate it will be exhausted by October, unless expenditures are cut to the marrow.

The county court holds that the first consideration should be extended to home folks, and the entire list is now composed of worthy local cases. There has been a frowning upon extending financial help to transient indigents, of which there have been many.

A number of petitions for the establishment of roads in various parts of the county were considered by the court, including the Grants Pass-Rogue River road, Change eliminating two grade crossings, and several sharp curves are embodied in the new survey.

The remainder of the morning session was devoted to the transaction of routine business, and approving of payrolls and bills for June.

Chauncey Florey now located 123 East Main St. Insurance and Real Estate. 651\*

# FIND ARMY WORM, UNUSUAL PEST, IN PHOENIX GARDENS

Reports have come to the Southern Oregon Experiment station of serious damage to tomato, potato, alfalfa and other crops by caterpillars which have suddenly made their appearance in large numbers. Specimens brought to the station have been identified by the writer as the yellow-striped army worm. They are velvety black on the back with two prominent and many fine bright yellow stripes on the sides, and reddish beneath. They are general feeders, attacking alfalfa, truck crops, melons and weeds.

Serious outbreaks are reported to have occurred in California in 1915, 1918 and 1922.

Plants should be protected against these caterpillars by a spray of arsenate of lead, at the rate of three or four pounds in 100 gallons of water. Poison bran mash should be broadcast about the bases of

plants late in the afternoon or in the early evening, since these pests normally feed at night. The poison bran mash contains the following: 25 pounds of coarse wheat bran, one pound Paris green, one quart strong molasses. The bran and Paris green are mixed together dry and the molasses dissolved in about two gallons of water. This is then mixed with the bran and enough more water to make a crumbly mash, but not too sloppy.

Where the caterpillars are coming in in large numbers from alfalfa or waste lands, they may be stopped by a deep trench with the dirt on the sides finely pulverized. The caterpillars will gather in postholes placed about every ten feet in the bottom of the trench, and may be killed there. When the army worms appear, immediate efforts must be made to control them, since they can do serious damage in a short time.

This pest may not occur again in years. L. G. GENTNER, Associate Entomologist, Southern Oregon Experiment Station.

Woodburn.—Contract awarded to Andrew Presthus for construction of new west side schoolhouse.

The 1928-1930 Philippine sugar crop exceeds that of the previous season by 27,766 tons.

# OLSON PROMOTED TO PORTLAND S. P. STATION AGENCY

A. S. Rosenbaum, district agent, Southern Pacific lines, today announced the promotion of Henry D. Olson, traveling freight and passenger agent, to the position of agent at Portland (Park street) station, to succeed R. A. Martin, who was retired on pension July 1st, after 42 years' service with the Southern Pacific company.

Mr. Olson's many friends will be happy to know that, in line with the company's policy, he has received this recognition, the Portland station being one of the five largest stations on the Pacific System line, ranking in order: San Francisco, Los Angeles, Oakland, Portland and Sacramento.

Mr. Olson, who for the past ten months has been located at Medford, entered the service of the company in 1909, and has worked

as telegrapher and agent at various stations in Oregon and also in the general freight offices in Portland.

Successor to Mr. Olson at Medford has not as yet been determined upon, but, in line with the company's policy, the position will be filled from the ranks and announcement will follow later.

## Wedding Bells

Clyde Thornton and Nancy Ellen Robinson, both of Jackson county, were married at the local Baptist parsonage at noon Tuesday, July 1, the pastor, W. H. Eaton, officiating.

Mr. and Mrs. Thornton, went to Four Mile lake this afternoon, where they will spend their honeymoon, after which they will be at home to their friends at Phoenix.

# MRS. ALMA HOOVER OF PIONEER FAMILY, GOES TO REST EARLY TODAY

Mrs. Alma M. Hoover passed away at her home in north Medford today at the age of 67 years. She was born in Texas, December 6, 1862. She was married at Lockhart, Texas, on Sept. 15, 1878, coming to Oregon in 1883 where she has since resided. She leaves the following children: W. E. Hoover, Los Angeles; Elizabeth Soltes and Charlie Hoover of Medford and five grandchildren. Dr. Viola Hoover, Cecil Davis and Earl Hoover of Los Angeles.

Funeral services will be held at the Conger chapel at 5:00 p.m. Thursday, Rev. W. H. Eaton will officiate and interment will be in Medford cemetery.

Notice. During July and August the optometrists will close their offices on Saturday afternoons. DR. CHAMBERS, DR. LEE, DR. ELWOOD, DR. RICKERT.

Nearly 24,000,000 school children yearly are carried on Ohio school buses.

Clatskanie.—Contract awarded for construction of Holman building.

Two automobile clubs of California have a combined membership of nearly 250,000 motorists.

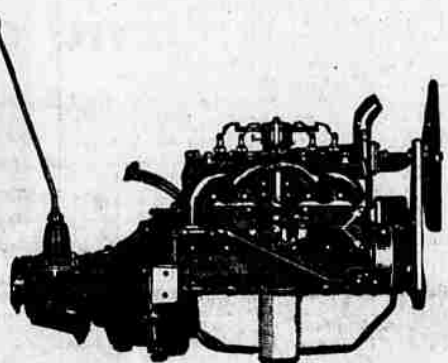
# THE VALUE of SOUND DESIGN

New Ford engine gives outstanding acceleration, speed and power without sacrificing reliability or economy

THE GOOD PERFORMANCE of the Ford car, so apparent on every highway, is due largely to the sound mechanical design of the engine.

It has outstanding acceleration, speed and power, yet that is only part of its value to you. Greater still is the fact that it brings you all these features without sacrificing either reliability or economy.

That is the reason the Ford car has given such satisfactory service to millions of motorists all over the world and has been chosen by so



many large companies that keep accurate cost figures. In every detail of construction it has been carefully planned and made for the work it has to do.

The design of the compression chamber is an important factor in the efficiency of the Ford engine. It

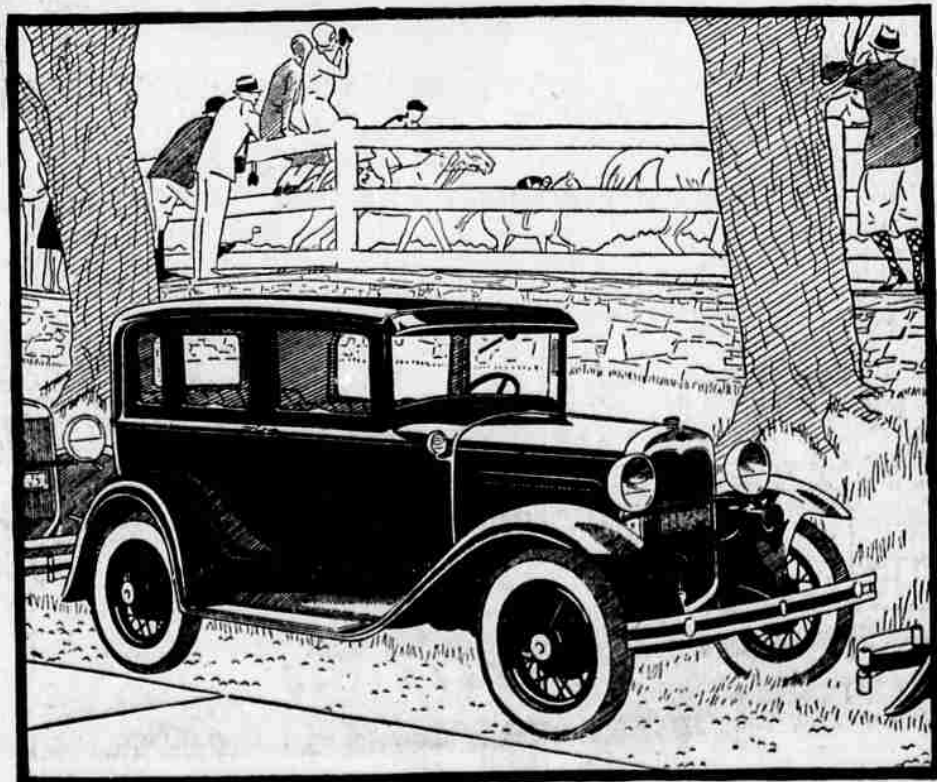
is built to allow free passage of gases through the valves and to thoroughly mix the fuel by producing turbulence within the cylinders during compression. The spark thus flashes quickly through the whole fuel charge, resulting in quieter and more effective engine performance.

Other factors are the direct gravity gasoline feed, the specially designed carburetor, the new hot-spot manifold, aluminum pistons, chrome silicon alloy valves of larger diameter, statically and dynamically balanced crankshaft and flywheel, simplicity of the electrical, cooling, lubrication, and fuel systems and accuracy in manufacturing.

### NOTE THESE LOW PRICES

- Roadster . . . . . \$435
- Phaeton . . . . . 440
- Coupe . . . . . 495
- Tudor Sedan . . . . . 495
- Sport Coupe . . . . . 525
- De Luxe Coupe . . . . . 545
- Three-window Fordor Sedan . . . . . 600
- Convertible Cabriolet . . . . . 625
- De Luxe Phaeton . . . . . 625
- De Luxe Sedan . . . . . 640
- Town Sedan . . . . . 660

All prices f. o. b. Detroit, plus freight and delivery. Bumpers and spare tire extra, at low cost.



THE NEW FORD TOWN SEDAN

Ask the nearest Ford dealer for a demonstration

# SAFeway STORES

DISTRIBUTION WITHOUT WASTE

Store No. 433, 309 East Main Street, Phone 1176  
Store No. 471, 206 West Main Street, Phone 1010

## All Safeway Stores Will Be Closed All Day July 4th

Secure your food needs for over the holiday at Safeway

Picnickers and campers will find a wide selection of eatables that will make this outing more enjoyable.

<b>Jello or Jell Well</b> Make a delicious, colorful dessert for the 4th. Assorted as you wish. <b>5 packages... 33c</b>	<b>Shrimp</b> Fancy Southern Dry Pack. Summer time is salad time. Save at Safeway. <b>3 cans... 43c</b>	<b>Ginger Ale</b> Cluquot Club Pale Dry, highest quality and flavor. Aged 6 months in the large bottle. each dozen <b>19c \$2.09</b>
--	---	---

<b>Milk</b> Max-i-mum or Pet, always fresh. Tall cans. <b>5 cans 39c</b>	<b>Pork and Beans</b> Van's Camp's, with pork and tomato sauce. Medium cans. <b>3 cans 25c</b>	<b>Relish Spread and Mayonnaise</b> Best Foods Pint <b>35c</b>	<b>Olives</b> Highway Ripe Olives, No. 1 tall cans. <b>2 cans 29c</b>
---	---	---	--

<b>Mayonnaise</b> Fresh, rich and tasty. Flavored to a delicious taste in bulk. Save the Safeway. Pound—equal to a pint <b>29c</b>	<b>Crackers</b> Snowflakes, fresh, crisp Salted wafers. Small package... <b>13c</b> Family Package... <b>33c</b>
--	---

<b>Pickles</b> Fannings Bread and Butter, with the old-fashioned flavor. <b>15 oz. jars 23c</b>	<b>Cake Flour</b> Swansdown insures success in making finer cakes. <b>pkg. 33c</b>	<b>Cheese</b> Oregon full cream, aged to a tasty flavor. <b>lb. . . 24c</b>	<b>Matches</b> Safeway, highest quality, sure to light. <b>6 boxes 15c</b>
--	---	--	---

<b>Coffee</b> Safeway Blend, the world's finest coffee, roasted and blended by our own experts. pound <b>37c</b> 3 pounds <b>\$1.09</b>	<b>Sugar</b> Pure cane, fine granulated. <b>10 lbs. 53c</b>	<b>Eggs</b> Fresh U. S. Extras. Every egg guaranteed fresh. <b>2 dozen 49c</b>
---	---	--

Safeway Has the Finest Selection of Fresh Fruits and Vegetables

<b>Potatoes</b> Quick Lunch Variety <b>6 lbs. 23c</b>	<b>Watermelon</b> Klondikes, Pre-Cooled <b>Lb. 3c</b>	<b>Lemons</b> Large, Fancies <b>2 doz. 77c</b>	<b>Oranges</b> Sweet and Juicy <b>2 doz. 69c</b>
--	--	---	---

Watch the Safeway Windows for Specials Saturday