

STATE MOTOR A. COMPLETES 1ST LAP ROAD SIGNS

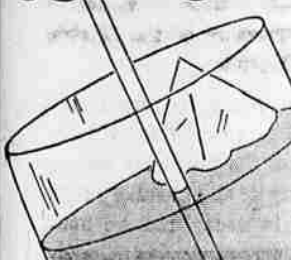
The first part of the road sign work done by the Oregon State Motor association, has been completed with the cooperation of the state highway department and the county engineering department. More signs will be placed on the county roads at a later date until all county roads are well marked. This marks another sign progress being made by the association in their efforts to assist the motorists. Two counties in the state are being marked each year in this way. Arrangements have been made to continue the work into Josephine and Klamath counties. The growth in membership has made this work possible and as the membership increases more services will be extended. People making trips east are continually calling on the local office of the Oregon State Motor association, the only official representative of the American Automobile association in the state of Oregon. Members of the Oregon State Motor association are members of the American automobile association and are recognized anywhere in the United States and Canada. At present there are over 1,600 A. A. clubs in the United States and Canada with over one million members. In joining this association one receives free information and maps wherever there is an A. A. sign hanging, and many other courtesies are extended to the tourist who is a member. Many other automobile clubs have sprung in Oregon at times, but none of them have any affiliation with the American Automobile association. Any information regarding this association or any other may be had by calling on the local office of the A. A. of Oregon State Motor association, located in the Chamber of Commerce building, Medford, Ore.

Examinations for West Point and Annapolis Academies

Competitive examinations will be held this fall for entries to West Point and Annapolis naval academies and names are being listed now for these examinations. Jackson county young men between the ages of 17 and 22, with high grades in school and of good physique desiring to enter either academy notify S. S. Smith, Medford, at once.

Injured in Cliff Fall
PORTLAND, Ore., June 19.—(P) Reuben Lantsevick, 26, Bend, Ore., was in a hospital today suffering injuries received when he fell down a 150 foot cliff near Redmond.

HERE'S COOL COMFORT



TREE TEA ORANGE PEKOE ICED

Wholesome, delicious, full-flavored. The perfect summer beverage.



Richard Byrd, Once "Retired" as Ensign, To Receive Honor From Hoover Friday

By OSCAR LEIDING
Associated Press Aviation Editor
WASHINGTON—(P) An ensign retired by the navy 14 years ago will return to Washington Friday as the youngest of rear admirals—and with the fame of flights over both ends of the earth.

Rear Admiral Richard E. Byrd will bring his entire Antarctic party to Washington and receive from President Hoover a special medal of honor of the National Geographic society.

The president will greet the explorer and his command twice—shortly after noon at the White House and again at night when the medal is presented.

Admiral Byrd will give his report of the South Pole expedition to members of the society, who furnished \$50,000 for the scientific work, and official motion pictures of Little America will be shown for the first time.

As a navy officer who at 41 has conquered by air the Atlantic and two worlds of frozen waste, Byrd also will pay his respects to Secretary of the Navy Adams.

His career of explorations has been carried on during an extended leave from the navy—yet through a leg injury caused his removal to the retired list four years after his graduation from Annapolis. That was 14 years ago.

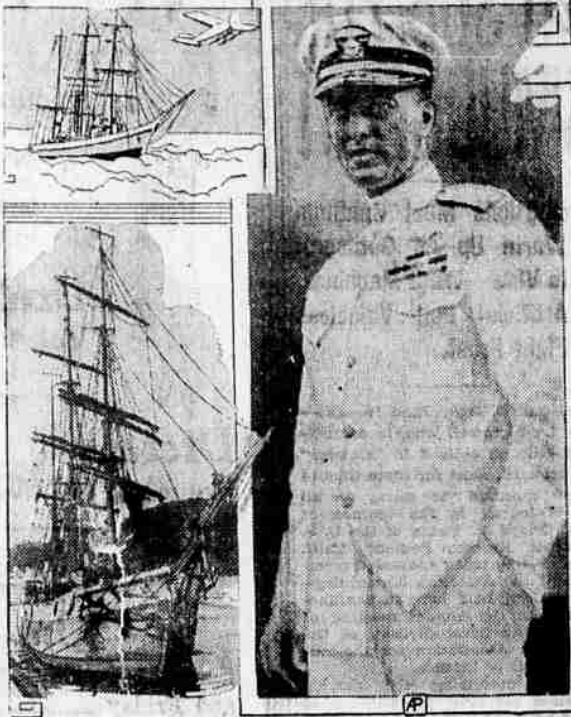
Scarcely a month of retirement had passed, however, before the government recalled him to active duty—a service that has been continuous ever since.

He won his wings as a navy aviator, but in charge of navigational preparations for the first trans-Atlantic flight—that of the navy flying boats in 1919—and served in the bureau of aeronautics.

It was not until late in 1924 that congress' attention was called to a young aviator who was a leader in naval aviation, but who was performing active duty with no chance of promotion—because he was carried on the navy rolls as "retired."

In 1925 he was voted the rank of lieutenant commander on the retired list, shortly before he was given command of his expedition to the North Pole, where he won a second promotion.

The rear admiralship was voted him last year after his north polar South Pole flight, and special medals for his entire party have been voted by congress.



Rear Admiral Richard E. Byrd (right) is to be welcomed by President Hoover after his return to the United States. He came back from Little America in the bark City of New York (left).

On the Air

7:00 to 7:30 p.m.—The Speedway to Happiness—NBC service to KGO, KFI.
7:30 to 7:45 p.m.—Amos 'n' Andy—NBC service to KGO, KHQ, KOMO, KGW, KECA.
7:45 to 8:45 p.m.—Standard Symphony Hour—NBC service to KGO, KHQ, KOMO, KGW, KFI.
8:00 to 9:00 p.m.—B. A. Rolfe and His Lucky Strike Dance Orchestra—NBC service to KFO, KECA.
8:45 to 9:00 p.m.—Parks Sisters—NBC service to KGO, KHQ, KGA.
9:00 to 9:30 p.m.—Memory Lane—NBC service to KGO, KHQ, KGW, KECA.
9:30 to 10:00 p.m.—The Olympians—NBC service to KGO, KHQ, KOA, 9:45 to 10:00 p.m.—The National Concert Orchestra—NBC service to KGO, KOA.
11:00 to 12:00 p.m.—Dance Orchestra—NBC service to KGO.

Radio Program KMED

(Mail Tribune - Virgin Station)
Thursday
5 to 5:30—Standard Flamo Gas program.
5:30 to 6—Firestone One-Stop Service Station.
6 to 6:15—Fruit Dispatches by Myron Root.
6:15 to 6:30—News and markets by Mail Tribune.
6:30 to 6:45—Jackson County Bldg. & Loan association.
6:45 to 7—Farmers Exchange Cooperative.
7 to 7:15—Tom and Wash, presented by Associated Oil Co.
Friday
7:55 to 8—Breakfast broadcast of news by Mail Tribune.
8 to 8:30—Popular recordings.
8:30 to 8:45—Medford Cash & Carry Cleaners.
8:45 to 9—Gold Seal Creamery.
9 to 9:30—Monarch Seed & Feed Co.
9:30 to 10—Schillin & Co.
10 to 10:30—Westside Market.
10:30 to 11—Marsh Grocery.
11 to 11:30—Enders Grocery.
11:30 to 12—Jacque Lennox.
12 to 12:30—Motor Electric.
12:30—News flashes by Mail Tribune.
12:30 to 1:00—Palmer Music House.
1 to 1:30—Ivy Street Market.
1:30 to 2—Lewis Super Service Station.
2 to 2:30—Mann's Dept. Store.
2:30 to 3—Brophy's Jewelers.
3 to 3:30—Brunswick Breweries.
3:30 to 4—Standard Flamo Gas program.
4 to 5—Beebe Service Station, Central Point.
5 to 6:15—Fruit Dispatches, Myron Root.
6:15 to 6:30—News and markets by Mail Tribune.
6:30 to 7—Harwood Photo Service.
7 to 7:15—Tom and Wash, presented by Associated Oil Co.
7:15 to 7:45—Mead - Parch Motor Co.

BILL ALLEN TUTORS SALESMAN CLASS

The first class in the salesmanship course being conducted throughout the United States by the Chevrolet Motor company for employees was held last evening at agency headquarters in this city, under the leadership of W. W. Allen. Other classes will be held June 20, 23, 25 and 27.

All persons interested in sales training are extended an invitation to attend the classes. Advance sales methods will be presented and discussed with the idea of giving salesmen a greater knowledge of the organization behind them. All phases of the selling angle will be presented to better equip employees to serve the public and the company as well.

Dealers are conducting these schools throughout the country with the assistance of sales managers.

1:30 to 2—Lewis Super Service Station.
2 to 2:30—Mann's Dept. Store.
2:30 to 3—Brophy's Jewelers.
3 to 3:30—Brunswick Breweries.
3:30 to 4—Standard Flamo Gas program.
4 to 5—Beebe Service Station, Central Point.
5 to 6:15—Fruit Dispatches, Myron Root.
6:15 to 6:30—News and markets by Mail Tribune.
6:30 to 7—Harwood Photo Service.
7 to 7:15—Tom and Wash, presented by Associated Oil Co.
7:15 to 7:45—Mead - Parch Motor Co.

ANNUAL MEETING OF HEALTH ASSN. DATED SATURDAY

The annual meeting of the Jackson County Public Health Association will be held Saturday in the parlors of the First Presbyterian church. It was announced this morning.

The meeting will open with round table discussions at 10 o'clock in the morning, and continue until noon. Discussions will be led by the county chairmen. Reports of communities will be given at the afternoon session, which will open at 2 o'clock.

Mrs. Sadie Orr Dunbar, executive secretary of the Oregon Tuberculosis association, will address the group. Mrs. Glendora Blakeley, state supervising nurse, will also be present.

An invitation to attend the meetings is extended to all persons interested in health work. Since the Jackson county association is one of the most outstanding in the state, a large crowd is expected to come to the meetings Saturday to receive first hand information regarding projects carried on in southern Oregon.

AIR MAIL ROUTE VIA MEDFORD TO EXPAND IN JULY

With the extension of the present Seattle-Los Angeles air mail-passenger service to San Diego July 1, Pacific coast cities, including Medford, can boast of the second longest service in the United States. The extension is being made by the Boeing Air Transport, a unit of Boeing system.

Under the new schedule, the Boeing mail-passenger plane leaving San Diego at 10:30 p. m. and making stops at Los Angeles, Bakersfield, Fresno, Oakland and San Francisco, will arrive in Medford at 6:45 a. m. Stops will also be made in Portland and Tacoma, reaching Seattle at 11 a. m.

Southbound planes leave the Pacific Northwest at 7:15 and reach San Diego at 6:15 p. m. The same steps are made as in the northbound flights.

The service between San Diego and Medford is as speedy as that offered by night telegrams. This is also the second longest illuminated route in the United States.



NEW IDEAS FOR YOUR HOME-



New Patterns in DISHES

... Everyone may now enjoy a really nice set of dishes at our very moderate prices.

\$7.25 and up
No Sets less than 42 pieces



USE YOUR CREDIT - - - IT'S GOOD HERE

Glendale. — Government emergency landing field located on Coquille. — Mike's Feed and Son received contract for construction of new Federal building.

CLEARANCE SALE of COATS

at Half and Less than Half Price

- \$45.00 Coats . . . \$25.00
- \$39.95 Coats . . . \$20.00
- \$29.95 Coats . . . \$15.00
- \$22.50 Coats . . . \$10.50

CLEARANCE OF DRESSES

- One group of 25 dresses; values to \$29.95. Clearance **\$12.95**
- One group of 50 dresses; values to \$29.95. Clearance **\$15.00**
- One group of 10 dresses; values to \$49.50. Clearance **\$29.50**

CLEARANCE OF HATS

- One group of hats; values to \$8.95. Clearance **\$2.95**
- One group of hats; values to \$16.95. Clearance **\$7.95**
- One group of hats; values to \$22.50. Clearance **\$9.95**

ADRIENNE'S
Distinctive and Individual Apparel for Women

A Group of Kid Gloves—Broken Sizes Values to \$5.95 **\$1.95**

A broken line of Hosiery Values to \$2.00 **\$1.25** 4 pair \$4.50

WHO MADE IT?

The Patent label protects you—Look for it when you buy Malt Syrup

PABST MALT SYRUP

PABST!

That's all you need to know

PABST CORPORATION MILWAUKEE
The same old name since 1844

MASON, EHRMAN & CO.

VON DER HELLEN PLAY DEALS WITH JOYS OF ELECTRIC APPLIANCES

It is not always that people who have not been used to electrical lights and appliances find so much enjoyment in them at first, as was brought out in the play, "A Wire in Time," written by Nelle von Der Hellen and presented during the Economy Groceries program this morning over station KMED, the Mail Tribune-Virgin radio station.

With one outlet in each room, the troubles began when Mrs. McDonald tried to press her husband's clothes in the evening, scorching them as a result. Even the radio wouldn't work when company came and, to top it all, Mrs. McDonald made malted milks for her husband and his old school friend, Olga Hansen, who was their guest, putting a generous supply of soap powder in white preparing them in the dark.

Junior filled the wash bowl with fish worms and told Miss Hansen what his mother thought of her.

The cast included Benny McDonald, Leo Maher; Mrs. McDonald, Helen Bratton; Olga Hansen, Nelle von Der Hellen; and Junior McDonald, Bobby von Der Hellen.

GILMORE MANAGER ARRIVES FOR DUTY

A. M. O'Hanlon is in this city from Portland to take over his duties as manager of the Gilmore Oil Co., Ltd., which is installing a distributing plant in Medford.

Mr. O'Hanlon will make Medford his permanent headquarters and will be joined here by his family within a short time. He reports that construction of the plant is progressing rapidly.