

SAM BAKER
PRESIDENT
OF BANKERS

Grants Pass Man Elected at
Closing of Oregon Con-
vention—Acting Governor
Heard in Address—Astoria
Asks Meet.

Sam Baker of Grants Pass was
elected president of the Oregon
Bankers' association at election
held this forenoon in the closing
session of the annual convention
of the association, opening here
yesterday. John Edliefson, Portland,
was elected treasurer and John R.
Humphrey, Oregon City, was chosen
executive treasurer. An executive
committee was also elected and sev-
eral resolutions were passed.
A speech by R. S. Hamilton, acting
governor of Oregon, was a
feature of this forenoon's session.
He chose taxation as his topic. He
brought out the fact that the tax
bill of the state is 50 million dol-
lars of which one-half is devoted
to maintenance and development of
school. He declared it would be a
hard task to bring about a tax
reduction under the present system
in view of the huge sum of money
demanded by the schools, in addi-
tion to city and county govern-
ment. Only a small portion is de-
voted to the upkeep of the state.
Farm Board Endorsed
The state cabinet form of gov-
ernment was endorsed by the
bankers in a resolution as a great
step forward. The cabinet form
of government will come up for
consideration at the general elec-
tion next November. The bankers
also resolved to support the fed-
eral farm board for good work ac-
complished in aiding the farming
industry and resolved its contin-
uance was a necessity.
Astoria was the only city to ex-
tend an invitation for bankers as a
place for next year's convention.
This matter will be settled at the
meeting next January of the execu-
tive committee, the new members
of which are Fred Callister, chair-
man, Albany; L. Barnum, The Dalles;
B. E. Hardder, Medford; C. C. Colt,
Portland; A. A. Rodgers, Eugene.

Duchess Honored



The Duchess of Atholl, first Scotch
woman to sit in parliament,
receives honorary degree from Col-
umbia university.

OFFICIAL COUNT
BOURBON VOTE
IS ANNOUNCED

Bailey Defeated Wilbur by
1551—Grants Pass Can-
didate Got 2679—Piper
4395 Votes.

SALEM, Ore., June 10.—(AP)—
Official count of the vote cast in
the primary election for the Demo-
cratic nomination for governor,
according to the secretary of state,
shows that Edward F. Bailey of
Junction City received 11,929
votes and George R. Wilbur of
Hood River 10,388, a lead of 1551
for Bailey. A. C. Hough of
Grants Pass received 2679 and Ed
S. Piper of Portland 4395.
In all three congressional dis-
tricts the Republican incumbents
will have democratic opposition in
November. In the first district
W. A. DeBell of Salem, unop-
posed for the Democratic nomi-
nation, received 10,440 votes. He
will oppose Representative W. C.
Hawley.
In the second district Robert
Bradford of La Grande, whose
name was written in on the ballot,
was given 85 votes and the nomi-
nation. Representative R. R. Butler
of The Dalles, Republican in-
cumbent, received 43 Democratic
votes in the district.
In the third district Charles H.
Martin, nominated by the Demo-
cratic central congressional of the
district, and whose name was
written in, received 705 votes, and
will run as the Democratic oppo-
nent of Representative Korrell.
Elton Watkins, by the official
count, received 25,958 votes for
the Democratic nomination for
United States Senator.

SHRINE PARADE
AND CONCLAVE
HALTED BY RAIN

TORONTO, June 10.—(AP)—Rain
breaking suddenly from a threat-
ening sky, caused postponement
today of the parade of the Ancient
Arabic Order, Nobles of the Mys-
tic Shrine, and the grand opening
of the International Shrine
convention.
More than 10,000 nobles, garbed
in colorful uniforms and pa-
tried trappings, were prepared to
participate when the decision was
reached to postpone the march.
The parade up Lake Shore Boule-
vard was advanced to tomorrow
and all other outdoor events
scheduled for the day were tenta-
tively cancelled.
Flags, bunting and other deco-
rations along the boulevard and
throughout the business district
were drenched and the streets,
which for three days have been
bustling in festive activities, sud-
denly were deserted.

ANGEL OF BOWERY IS
MILLIONAIRE'S BRIDE

RENO, Nev., June 10.—(AP)—
Irving T. Bush, head of the Bush
terminal, massive warehouse con-
cern of New York, and Miss Mar-
ion Spore, known in New York as
"The Angel of the Bowery," due
to her charitable work in that sec-
tion of the city, were wed here last
night following a divorce court
hearing which released Bush from
matrimonial ties.

AUTO TAGS
READY FOR
JUNE 15TH

New Black and Tan Plates
May Be Affixed Before
July 1—Remove Wind-
shield Stickers When
Tags Changed.

SALEM, Ore., June 10.—(AP)—
Secretary of State Hoss said today
that the first of Oregon's new
black and tan motor vehicle li-
cense plates will be released Sat-
urday, June 14, so they may put
on the cars to replace the old
plates June 15.
While the new licenses are not
due until July 1, the legislature
of 1929 which changed the new
license date from January 1 to
July 1, made legal a 15-day latitu-
de for the issuance of new
plates, so they will be legal on
and after June 15. This is one
of a number of reforms intended
to save time and money for the
state, and motorists are urged to
change as soon as possible after
the legal date.
Hoss cautions motorists when
they change plates, also to remove
the windshield stickers that have
been used since last January 1 in
the transition from the old to the
new license paying dates.
Strain on the office forces will
be relieved by the issuance of
temporary receipts with the li-
cense plates, so the owner will
be protected by a receipt pending
the mailing of his permanent re-
ceipt later. This will make un-
necessary much of the hurry that
heretofore has kept the depart-
ment at high tension.
Facilities for writing receipts
have practically been doubled by
the adding of modern mechanical
equipment. It is estimated that
25,000 receipts can be written
daily.

16,718 PEOPLE
LIVE CLOSE TO
LOCAL CENTER

Half of County's Population
Within Ten Miles of Med-
ford Revealed in Official
Census.

The population of the city of
Medford, within its corporate lim-
its, is 11,995, according to a care-
ful adding of census figures, made
public yesterday by the district
census supervisor, J. H. Koke of
Eugene.
Within five minutes' auto travel
from the Jackson county bank,
there is a population of 13,064.
The suburbs of Perrydale with a
population of 844, Berrydale 309,
Orchard Home 439, and Rocky
Ann 295, fringe the city limits,
and are embraced in the imme-
diate Medford trade area.
Within a five-mile radius of the
center of the city there is a popu-
lation of 16,718, counting the
city and Jackson, Central Point,
and Talent. Half the popu-
lation of the county is in the Med-
ford 10-mile zone.
The new figures, compiled this
morning by C. T. Baker, secre-
tary of the Chamber of Com-
merce, and public accountants, al-
low this city to make good its
claim of more than 11,000 souls,
and will be known as "a 11,000."
A published report that the
population of Medford was 19,232
was erroneous, and a case of poor
adding.

BIG SHORTAGE IN
CINCINNATI BANK

CINCINNATI, June 10.—(AP)—
The Cosmopolitan Bank and Trust
company was closed today by O.
C. Gray, state superintendent of
banks, after a shortage of from
\$275,000 to \$500,000 was found in
the bank accounts of the Henry L.
Doherty company, Cincinnati
branch.
The Doherty company was one
of the largest depositors in the
Cosmopolitan bank.
Examiners and county officials
said a shortage of more than \$1,
000,000 existed in the books of
Amos W. Shafer, former district
manager of the Doherty company.

WIFE KILLED IN LOVE TRIANGLE



Mrs. Maude Lowther (above), 22, housemaid in an Ashtabula,
Ohio, home, told officials how Tribby Smith, 26, Ashtabula contractor,
plotted with her to slay his 28-year-old wife, who was shot and killed
on a road near Ashtabula. Both are charged with first degree murder charges were
filed against them.

NEW BANKS BY
CHAIN SYSTEMS
POOR BUSINESS

Minnesota Banker Opposes
Entry of Group Units in
Communities Already
Well Served.

WASHINGTON, June 10.—(AP)—
Opposition to creation of new
banks by group systems in com-
munities already served ade-
quately, and to establishment of
branches outside metropolitan dis-
tricts, was expressed today before
the house banking committee by
Elmer E. Adams, president of the
First National Bank of Fargo,
Fargo, Minn.
He said he was not opposed,
however, to the acquisition of ex-
isting banks by the group systems,
and that "individual banks which
are on their feet have no fear
of being unable to compete suc-
cessfully with group banks unless
unfavorable legislation is passed."
"The unfortunate situation
which has developed in the north-
west and in some other parts of
the country," he added, "is not
in our opinion due to the failure
of the present system of banking,
but because congress and legisla-
tures have permitted the estab-
lishment of banks with too small
capital and in communities which
were unable to support them."

WILLIE KAMM TO
WARM THE BENCH

CHICAGO, June 10.—(AP)—Willie
Kamm, formerly of the San Fran-
cisco Coast League club, who led
American League third basemen in
fielding in 1928 and 1929, has been
bonched by Manager Donie Bush
of the White Sox. Kamm has failed
to get started this season and
was included in a wholesale shift
which sent Irving Jeffries to third
base, Smead Jolley from right field
to left, Carl Reynolds to right, and
Johnny Watwood to center, in an
effort to add punch to the Sox at-
tack.

FEDERAL LICENSE FOR
DEALERS IS APPROVED

WASHINGTON, June 10.—(AP)—
President Hoover today signed the
bill for federal licensing and su-
pervision of dealers in perishable
commodities.
He said he had long advocated
the legislation and it had the sup-
port of dealers and agricultural
groups.

Southern Oregon Climate Is Aid
To Honesty; Two Recover Purses

To illustrate to the bankers here
in attendance at the state conven-
tion that not only the Rogue
River valley section climate is a
great one, but that it also stimu-
lates honesty, despite the fact
that K. V. Lively, banker of Port-
land, and Colonel L. A. Robey of
Grants Pass together lost \$25
taken from their rooms by sup-
posed petty thieves, in a local hotel
last night, and inoculates honesty
in minds of outsiders, a sample
incident is cited for their perusal.
A few days ago, Martin Ramsey
of Klamath Junction was en route
to Ashland to deposit \$412 in a
bank and lost the sum along the
highway. E. W. Dilman of Long
Beach, Calif., came driving by
shortly after, found the money,
took it to Ashland and deposited
Ramsey's account, after the
latter had expected that he would
never see the money again. Dilman
was offered a \$50 reward, but em-
phatically refused the offer.
Gene Wright, local oil salesman,
uttered a big sigh of relief today
when informed that the sheriff's
office had located the bulk of the
\$299 he lost two or three days ago.
He was at the office this forenoon
and looked over the checks and
currency that were in his wallet
when lost. Appearance of the
paper gave evidence that they had
been wet and were still a little
damp when the loser inspected it
at the office.

DUNCAN IS
GUILTY OF
VIOLATION

'Oregon Wildcat' Election-
eered On Voting Day, Is
Verdict in Portland—
Used Radio KVEP to
Get Argument to People.

PORTLAND, Ore., June 10.—(AP)—
Robert Gordon Duncan, self-
styled Oregon "wildcat" and
defeated Republican candi-
date for congress, who was
convicted here yesterday on
two violations of the Oregon
corrupt practices act, today
was sentenced to pay a \$25
fine on the first count and
\$50 and a ten day jail term on
the second.

PORTLAND, Ore., June 10.—(AP)—
Robert Gordon Duncan, self-
styled "Oregon wildcat," defeated
Republican candidate for nomi-
nation to congress, was convicted in
district court Monday on two
complaints charging him with elec-
tioneering on election day in
violation of the Oregon corrupt
practices law.
The jury of three men and three
women deliberated only ten
minutes before bringing in the verdict.
Specifically Duncan is charged
with broadcasting two talks over
radio station KVEP on election
day in which he urged the voters
not to return his opponent, Con-
gressman Franklin F. Korrell, to
congress. The offense is a misde-
meanor and each is punishable by
a maximum fine of \$100 or a
maximum jail sentence of 30 days,
or both.

CRACK KLAMATH GUARD
UNIT LEAVES FOR CAMP

KLAMATH FALLS, Ore., June
10.—(AP)—Seventy-seven men, mem-
bers of Battery D, 249th Coast
Artillery and battery, having the
best record in Oregon for drill
attendance and marksmanship,
entrain here tonight for Fort Ste-
vens for the two weeks' annual
encampment. Other Southern Ore-
gon Guard units join at Eugene,
where the troop train will be
made up.

BUDGET REQUIREMENTS
WILL BE MADE KNOWN

SALEM, Ore., June 9.—(AP)—Sam
A. Koser, state budget director,
has placed into the hands of the
heads of all state departments and
institutions the blueprint forms on
which they are to estimate and
submit to him their estimated fi-
nancial requirements for the com-
ing biennium of 1931-1932.
EUGENE.—The safe in the Wool-
worth store was carried away by
yogsmen. Police said they did not
know what it contained.

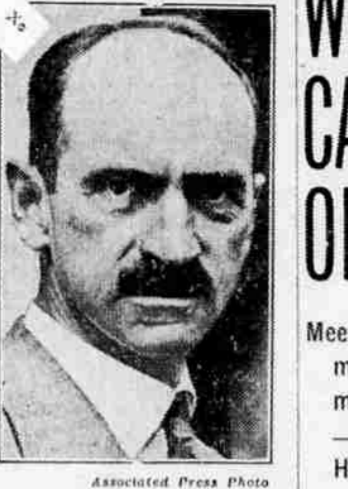
NOT GUILTY IS PLEA
OF TACOMA JANITOR

PORTLAND, Ore., June 10.—(AP)—
Louis Zwanek, 50, former Ta-
coma, Wash., janitor and self pro-
claimed heir to a \$100,000 estate
in Hamburg, Germany, today plead-
ed not guilty to a charge of non-
support preferred against him by
Mrs. Zwanek in 1928, when, she
alleged, Zwanek left her and their
two daughters.

SUPREME COURT GIVES
NO DECISIONS TODAY

SALEM, Ore., June 10.—(AP)—
Because of the absence of several
members of the supreme court the
usual Tuesday glist of opinions
will not be handed down today.

Observes Anniversary



Glenn H. Curtis observes twen-
tieth anniversary of his flight from
Albany to New York in a box kite
plane by piloting a modern 20-pass-
enger air liner over same route,
May 30.

JACKSON LEVY
IS DECREASED
3.32 PERCENT

Total Tax Amounts to
\$1,700,568 — \$58,840
Less Than 1929—\$97,-
167 Goes to State.

Total property tax levies, for
all purposes, for Jackson county
for this year amount to \$1,700,568,
a decrease of \$58,840 from the
1929 figures of \$1,759,048. The
rate of the decrease is 3.32 per
cent.
The local and county tax for
Jackson county was \$1,603,401, a
decrease of \$31,995 or 1.92 per
cent over 1929.
A tabulation of the Jackson
county taxes is as follows, as com-
piled by the Oregon Voter, statisti-
cal journal:
State purposes \$ 9,248
Soldiers' bonus 86,315
Higher education 1,504
General 97,167
Total state \$ 204,234
Local purposes \$ 714,509
Schools, high, elementary \$ 184,891
Roads 184,891
Library 6,503
County, general 88,794
Cities and towns 156,513
Irrigation district 339,516
Water district 2,432
Lions 1,819
Fire patrol 6,424
Total, local \$1,603,401
Levies by:
State, state purposes \$ 97,167
State, for local schools 62,820
State, for county roads 31,160
County and local bodies 1,505,921
Grand total \$1,700,568

ROGUE POWER
PLANS HIT BY
LAW DECISION

SALEM, Ore., June 10.—(AP)—In
an opinion written for State En-
gineer Luper today Attorney Gen-
eral Van Winkle advises him to
deny the applications of Romaine
W. Meyers of Oakland, Cal., and
Charles H. Lee of Berkeley for wa-
ter power rights on Rogue river in
Josephine county, filed in con-
nection with a proposed \$23,000,000
development project. It is con-
sidered that the case will be taken
to the courts for final determina-
tion.
The attorney general holds that
the appropriations requested are
prohibited by an act of the 1929
legislature, notwithstanding the
applications were filed prior to the
passage of that act. The act in
question withdraws from appropri-
ation the waters of Rogue river,
in the district involved, except for
domestic stock, irrigation and mi-
nicipal purposes, and prohibits the
placing of any obstacle in the
stream that would interfere with
the free migration of fish.

PENSIONS BILL GETS
COMMITTEE APPROVAL

WASHINGTON, June 10.—(AP)—
The house bill to liberalize World
War veterans' compensation, mod-
ified to reduce the annual addi-
tional outlay by the government
from an estimated total of at least
\$150,000,000 to approximately \$74,
000,000, was approved today by
the senate finance committee.

WILL BOOST
CANNERIES
OF VALLEY

Meeting of C. of C. Com-
mittee and Banker Schul-
merich Preliminary Step
—Favorable Conditions
Here Pointed Out.

Preliminary steps in a program
to encourage extensive develop-
ment of the canneries of this vicin-
ity or establishment of new plants
to handle the produce of the
Rogue River valley were taken in
Medford today at a meeting of the
industrial committee of the cham-
ber of commerce with Edward
Schulmerich, president of the
Commercial Bank of Hillsboro,
Ore., arranged by Robert W. Ruhl,
editor of the Medford Mail Trib-
une, following a survey of the
financial success of the Ray Mail-
ing company cannery, sponsored
by Mr. Schulmerich, who is at-
tending the annual bankers con-
vention here.
Conditions in the Rogue River
valley conducive to the success of
the cannery business here were
listed by Mr. Schulmerich, who
outlined to the industrial commit-
tee "How and why the canneries
were established at Hillsboro and
Woodburn." The most important
problem in the cannery business is
the financing problem. Mr. Schul-
merich pointed out, stating that it
is not an unsurmountable problem
and can easily be encouraged and
assisted by the people of the com-
munity.
"I consider it the legitimate
function of a bank to assist in
every possible way in the develop-
ment of the community in which it
exists," he explained. "No insti-
tution, no matter how strong, can
rise above the financial or moral
strength of its surrounding terri-
tory."
Labor, transportation and pro-
duce, Mr. Schulmerich listed as the
additional requisites for a suc-
cessful cannery. The Rogue River
valley, he stated, can produce can-
nery material in ample quantities
to warrant the establishment of a
cannery here. Transportation rates,
he pointed out, are against the
cannery man. The rates being too
high on the finished product leav-
ing the city, also too high on the
raw materials such as sugar and
cans which would have to be
brought in. Development of the
Crescent City harbor, however, it
was shown, would eradicate this
obstacle.
The labor situation at the pre-
sent time he described as none too
favorable, but one which will im-
prove with the growth of the in-
dustry.
Produce Huge Pack
The two canneries in which Mr.
Schulmerich is interested are now
producing over a million cases a
year. The two canneries operating
in this vicinity are producing just
150,000 cases a year. The north-
west canneries last year paid di-
vidends of 15 percent, he stated, in
spite of the fact that it was a poor
season with no money cleared on
the canning of pears because of the
unusually high prices paid to
growers.
An efficient field staff, Mr.
Schulmerich also named, as one of
the essentials in establishment of
a cannery. It is necessary to have
men in the field, who can tell the
growers what to produce for can-
ning.

IS BANK FUNCTION

"I consider it the legitimate
function of a bank to assist in
every possible way in the develop-
ment of the community in which it
exists," he explained. "No insti-
tution, no matter how strong, can
rise above the financial or moral
strength of its surrounding terri-
tory."
Labor, transportation and pro-
duce, Mr. Schulmerich listed as the
additional requisites for a suc-
cessful cannery. The Rogue River
valley, he stated, can produce can-
nery material in ample quantities
to warrant the establishment of a
cannery here. Transportation rates,
he pointed out, are against the
cannery man. The rates being too
high on the finished product leav-
ing the city, also too high on the
raw materials such as sugar and
cans which would have to be
brought in. Development of the
Crescent City harbor, however, it
was shown, would eradicate this
obstacle.
The labor situation at the pre-
sent time he described as none too
favorable, but one which will im-
prove with the growth of the in-
dustry.

Produce Huge Pack

The two canneries in which Mr.
Schulmerich is interested are now
producing over a million cases a
year. The two canneries operating
in this vicinity are producing just
150,000 cases a year. The north-
west canneries last year paid di-
vidends of 15 percent, he stated, in
spite of the fact that it was a poor
season with no money cleared on
the canning of pears because of the
unusually high prices paid to
growers.
An efficient field staff, Mr.
Schulmerich also named, as one of
the essentials in establishment of
a cannery. It is necessary to have
men in the field, who can tell the
growers what to produce for can-
ning.

WILL
ROGERS
says:

WASHINGTON, June 9.—
In spite of the "crusaders" in
society, enforcement is making
headway here in Washington.
Mrs. McLean has announced
the fact that there will be no
drinks served to guests at her
home at breakfast, but lunch
will be early.

Seven hundred legislators
here have done what no other
700 men in the world could
have done. They have suc-
ceeded in making a tariff bill
that no one in the 700 thinks
is any good, and yet they will
pass it.

Let Mr. Ripley put that in
his clever "believe it or not"
column.
Phil Rogers
© 1930 Matthews Syndicate, Inc.

Abe Martin



Well, sir, I've been through the
Cleveland panic, the Roosevelt de-
pression, an' the Hoover overpro-
duction, an' my experience is that
things allus straighten 'emselves
out, declared old Niles Turner to-
day. It's too bad a chicken has a
breast, for it's caused more bitter-
ness, an' anxiety, an' misunder-
standin', an' fightin' than anything
I know of.