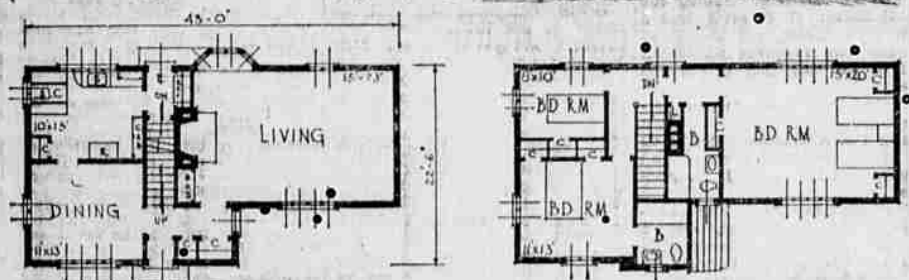


TUDOR CHARM IN THIS PICTURESQUE HOME



PICTURESQUENESS of design is featured in this six-room home of English Tudor style. Although the variety of materials required make it somewhat expensive to build, the general outline of construction is comparatively simple. The home is most suitable for a lot between 60 and 100 feet in width.

Three bedrooms and two baths are included in the second floor plan. The largest bedroom might easily be divided into two rooms with one used as a dressing room for the bath if desired. A tile or slate roof is recommended, with a combination of stucco and timber for the framework. If a fence is built on one side of the house, considerable

care must be taken so its design harmonizes with the landscaping. Costs will vary widely with the material chosen, but estimates in communities of moderate size place the construction expenses between \$8000 and \$10,000, depending on wage costs in different sections. The landscaping harmonizes with the landscape.

SURVEY PROPERTY TO AVOID TROUBLE SAYS H. D. POWELL

"The importance of having property surveyed to determine the boundary lines cannot be overestimated," H. D. Powell of the Powell & Wood engineering offices, said today in discussing an engineer's service to the people who are planning to build new homes.

Mr. Powell has been engaged in the engineering business in Medford for the past 20 years, while his partner, W. H. Wood, has been a surveyor and engineer for 26 years. Their office is located at 15 North Bartlett street.

Popularity of Well-Known Products Is Increasing

C. W. Wikander of San Francisco, district salesman for the well-known Certain-teed paints, shingles and other products, was in Medford yesterday and today transacting business with the different firms handling their goods.

PLAN PLANE FOR ROADS OR CLOUDS

ST. LOUIS, (AP)—An airplane that can be driven on the highways is envisioned by William N. Nelsch of St. Louis, who has drafted plans for the machine and applied for patents. According to Nelsch's plans, the plane could be run on roads by means of a steering gear and a device permitting the landing wheels to turn from side to side.

AMERICANS FAVOR BETTER HOMES, IS SECRETARY'S VIEW

WASHINGTON, D. C.—The secretary of the interior, Dr. Ray Lyman Wilbur, in a recent radio address stated that "active home building helps to maintain employment and good business as well as to enable us to live in better homes." He further called attention to the fact that more than 6500 communities, averaging more than two more every county in the United States, were engaged this week in demonstrating the many ways in which homes of every type can be improved, and sanitary, wholesome and attractive conditions of home life could be made available to all.

Dr. Wilbur, president of Better Homes in America, said: "One of the chief concerns of many of the 28,000,000 or 29,000,000 families in the United States is to have a good home. Although there are more better homes committees in some regions than in others, there are on an average two for each of the 3273 counties, with about 500 to spare. The activities are not confined to cities and towns, nor even to populous rural districts, but extend into thinly settled areas.

"The better homes committees start out by fixing a limit of expenditures within the range of a family of small income, and then see if they can build, furnish and equip a house to the best of their ability within the limit set. By working together in a group, the committee members, who are often specialists in particular fields, such as interior decorating, furniture, kitchen arrangement, labor saving appliances, floor coverings and so on, are able to do a better job than any one person could reasonably be expected to do in a relatively short time.

"Better homes in America relies almost wholly on volunteer local committees for carrying out its activities, and they in turn rely on volunteer educational assistance from local business men, civic associations, religious groups, and educational authorities as well as the local officials.

"At the other end, the movement is sponsored by more than a score of agencies such as the Child Health association and various organizations representing business and professional groups, civic associations and the like, as well as several of the government departments."

Grasselli Casein Spreader Aid Spray

The grower's attention is called to the ad of the Grasselli Casein spreader which is used in connection with arsenate of lead sprays or arsenate of lead and summer oil combination sprays to secure better control of insect pests.

PLENTY BLUBBER ON ESKIMO MENU

POINT BARROW, Alaska, May 3.—(AP)—Point Barrow celebrated May day by catching its first whale

of the season. A bomb from a huge "shoulder" gun killed the sea animal and several hours later a signal flag was seen waving at the lucky camp, five miles out on the ocean ice from here, where the whale was landed.

Immediately natives started for the camp and soon a string of dog teams about a mile long was winding serpent-like around bergs to the site. Although a small whale, with a three-foot whalebone, the animal will provide several tons

of meat and excellent fuel for the natives. Its black skin, about an inch thick and called "muktak" is the chief delicacy of the Eskimo cuisine.

FREEWATER THEATER DESTROYED BY FIRE

FREEWATER, Ore., May 3.—(AP)—Fire of undetermined origin destroyed the Silver Star Motion Picture

theater here last night, and damaged the Angerman Brothers bakery. Since the two buildings were close to residences, the Walls, Wallis, Wash, and Milton, Ore., fire departments responded to a general call. No one was injured.

Reedsport — Reedsport garage installed additional equipment. La Grande — Peter Pan confectionery opened its business.

BUILD NOW
These Dependable Concerns Are at Your Service

Fur and Personal Effects Insurance
"Covers all Risks"
First Insurance Agency, Inc.
A. L. HILL, Mgr.
30 N. Central Phone 105

Gas • The Modern Fuel for—
COOKING REFRIGERATION WATER HEATING BUILDING HEATING
Quick—Clean—Sure
Southern Oregon Gas Corporation
209 W. Main St. Phone 526

Loans On Small Homes
6% Simple Interests
Prudential Life Insurance Money
at the **COMMERCIAL FINANCE CORPORATION**
1st Nat'l Bank Bldg. Phone 1322

Don't Fight with your neighbors
Know Where Your Lines Are and Agree
Surveys Made by
Powell & Wood
Registered Civil Engineers
U. S. Mineral Surveys

Economy Lumber Co.
ALL KINDS OF BUILDING MATERIAL
DOORS CEDAR SHINGLES CEMENT WINDOWS COMPOSITION SHINGLES
SPECIAL
About 100,000 feet of lumber consisting of Boards and Dimension.
Your choice—\$10 per M
N. Court Street Phone 594

Furniture Upholstering
Overstuffed Chairs and Dayenports. Mattresses Renovated and Re-Covered. Rugs Cleaned and Sized.
Medford Mattress Company
32 N. Grape St. Phone 268-R

REMODEL NOW
If You Are Not Planning to Build a Home—Remodel Now

YALE BUILDER'S HARDWARE AND "Best Quality." Triple Guaranteed House Paint SCHLAGE LOCKS Medford Furniture & Hlwr. Co.
6th & Bartlett "A Reliable Place to Trade" Phone 35-R

Painting and Decorating
I specialize in hardwood finishes and all kinds of Interior Decorating.
One of my houses at 807 West 2nd is open for inspection
Martin Selton
808 Dakota St.

ROSE SALE
"Let's Make Medford More Beautiful"
SUNDAY AND MONDAY
All \$1.00 and \$1.50 roses. 3 for \$1.00

Park Landscape Company
New Location—806 N. Riverside

WHEN YOU BUILD Be Sure to Patronize Medford Firms

PHONE 268 FOR LAWN FENCE and GATES Volney Dixon
Fencing Since '98
134 North Riverside

PAPERING
GRINSTED & RUNTZ
Painters & Decorators
We specialize in all new and up-to-date furnishings—interior and exterior.
"Let us save your surface"
317 N. Riverside
Phones 485-J and 359-J

Awnings for Houses Cars Stores
Seat Covers For All Makes of Cars
F. F. BURK
MEDFORD TENT & AWNING WORKS
New Location, 112 N. Front

Exchange the Furniture You Don't Need at
The Medford Exchange
GEO. J. KUNZMAN, Prop.
For Better Quality Used Furniture
39 S. Front (New location) Phone 931

J. W. SMYLYE CONTRACTOR
FLOOR SURFACING—With an Electric Sander
Building Estimates Furnished
North Pacific Highway
Phone 314-W

When building your new home or remodeling the old one—see us for well-made
Cabinet Work, Windows Doors, Screens Store Fixtures
TROWBRIDGE CABINET WKS.
The Old Reliable—Established 1908

FOR LUMBER, SHINGLES AND ALL BUILDING MATERIAL SEE
Trowbridge Lumber Yard
(agents for Johns-Manville Roofing)

Building Time Is Here—Begin Now!

REPAIR WORK
The fact that we do a great volume of contract work does not mean that we are not interested in repair work. We guarantee satisfaction.
"Tinner's to the Trade"
Medford Sheet Metal Works
A. A. LIVERSIDGE, Prop.
719 N. Central Phone 411

A Fixed Income
The Rogue River Valley comes only from a bearing Pear Orchard. Eighty per cent of Bank Resources in Medford come direct from Bearing Pear Orchards. Why not get on the Bagel Wagon yourself?
See **HOLMES** for HOMES, and fair treatment, Nash Hotel Corner. He knows several things about pears.
Lock Box 934 Phone 329