

MEDFORD, OREGON, TUESDAY, APRIL 29, 1930.

No. 38

## MOON PATH DESCRIBED BY SAVANTS

### Heavy Cloud Threatened Pictures As Eclipse Near Totality—Capt. Stevens 18,000 Feet Up for Photographic Work.

SAN FRANCISCO, April 29.—(AP)—A heavy black cloud, forming in an instant, threatened to obscure the sun's eclipse, scientists and aviators related today in vivid descriptions of the celestial phenomena.

The black cloud, apparently formed by mist in the frigid air, startled the scientists a moment before the moon blotted out the sun yesterday. Shouts of bitter disappointment greeted the dark blotch, but a moment later a strong wind swept the cloud away and scores of cameras photographed the eclipse.

The swift passage of the moon's giant shadow was described by Captain A. W. Stevens and Lieutenant J. D. Corkille of the army air corps experimental laboratory of Wright field, Dayton, Ohio.

Thought it Mountain.

"We were high above a layer of white clouds about 18,000 feet over Honey lake in northern California," said Captain Stevens. "Suddenly we noted what we thought was a mountain about 75 miles in the distance.

"We knew it could not be a mountain for the highest peak in that vicinity was but 9000 feet. The dark spot appeared to be stationary at first. Then we saw it approaching us and knew it was the moon's shadow.

"The dark spot came slowly at first. We trained our motion picture camera upon it and started grinding out film. Faster and faster the shadow came on the clouds below. It passed beneath us so rapidly we could hardly perceive it. Turning our plane, we photographed it as it disappeared.

"The shadow appeared to be luminous and bluish purple and its diameter was about three-fourths of a mile, with its edges clearly defined.

"A snowstorm was raging below the plane at the time of the eclipse, and the exhaust fumes from the plane froze and left long trailing streaks in the sky."

Captain Stevens and Lieutenant Corkille were in Medford recently following an attempt to photograph Mt. Rainier while soaring over Crater lake.

### LA GRANDE POPULATION SHOWS 1130 INCREASE

LA GRANDE, Ore., April 29.—(AP)—La Grande's population for 1929 will set a record as 8943, according to the final report made today by Supervisor McIntyre. This is an increase of 1130, or more than 16 per cent. Three farms were enumerated inside the city limits.

## Are You As Guilty As She?

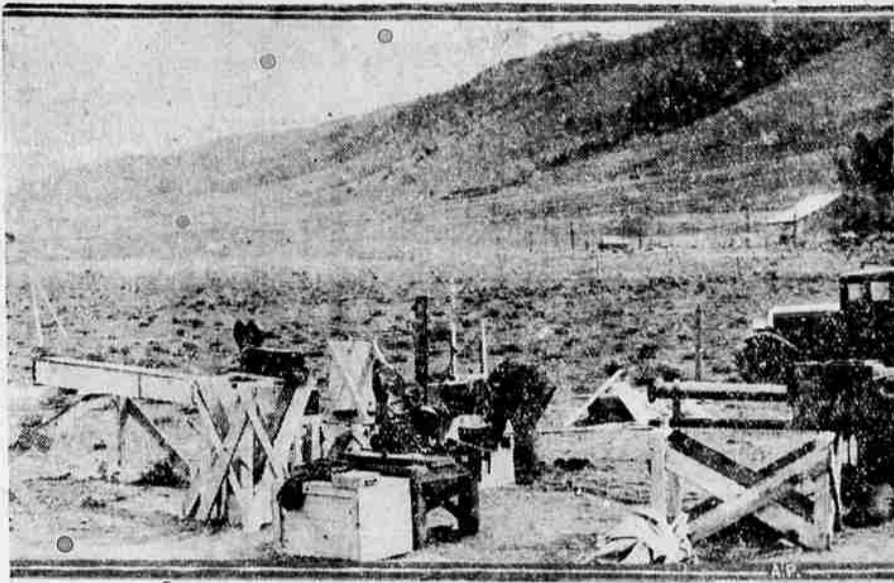


### STOMACH SUFFERERS WORST OFFENDERS

BAD breath spoils the sweetest smile and in all fairness to mouth washes you cannot expect them to correct such a condition when it arises from the stomach. You ought to be the first to suspect yourself. That disgusting "brown" morning taste in your mouth, a whitish or yellow-coated tongue—these are signs. Indigestion, bloating, gas, rai-ings of food and bowel disorders are other signs your stomach is upset and souring, producing a repulsive odor that is expelled every time you open your lips to speak or smile.

You need Tanlac, to properly correct this condition. Just a tablespoon before meals will help cleanse your stomach and intestines of the accumulation of fermenting matter that befoils your breath, give you an appetite and help digest food. Make a trial of Tanlac for 700 days—watch how that dark brown taste disappears—how much better you digest food—how your tongue clears up—how much better you feel generally. Tanlac is pleasant to take and inexpensive. As a stomach cleanser and builder it has no equal. Get a bottle today at your druggist's. It must help you or money back. Accept no substitute.

## Navy Photographers at Honey Lake



General view of motion picture and still cameras at Honey Lake, Cal., where the navy photographed the eclipse. Official U. S. Navy photo.

## MRS. BARKER'S SISTER TELLS OF EARTHQUAKE IN FAR NEW ZEALAND

A letter of interest, written by her sister, Miss Evelyn D. Miles of Herbyville, New Zealand, which was published in the New Zealand Herald, was recently received by Mrs. Richard A. Barker of this city.

"The letter gives a description of the violent earthquake, which damaged the homestead of Tatum sheep station at Herbyville, where Miss Miles lives.

"When I was about a quarter of a mile, as the crow flies from the homestead," she writes, "I noticed a number of cattle huddled together across the road. While I was still wondering why they were crowding together, the ground moved under me and nearly threw me off my feet. At the same time the fences shook and rattled as if giant hands were shaking them in fury. I was so terrified that I heard no noise, though Miss King and the children who were still on the beach, afterwards said they heard crash after crash.

"I looked over the paddocks at the house as soon as I could think, and saw what looked like a mat fall from the upper window. I have found since that it was a chimney.

"When we got home," Miss Miles continues, "What a scene of desolation met our eyes! Chimneys down, spouting torn off the roof, pipes burst and water pouring out, cupboards gaping open and pouring their contents, liquid and solid, breakable and unbreakable in one horrid mess. And china everywhere!"

Her story goes on including destruction of the lighting plant, water and heating systems, and a description of life in the great outdoors following the quake.

Oregon Weather.

Oregon: Unsettled tonight and Wednesday; showers in the mountains tonight; no change in temperature. Moderate winds, mostly northwesterly on the coast.

## LIST MEDFORD AMONG FINEST AIRPORT TOWNS

The dedications of new airports in Burbank, Los Angeles county, Sacramento and Tacoma, during the month, point to the substantial investments being made in airports on the Pacific coast, reports Boeing System, operators of the Seattle-Los Angeles air-mail-passenger line using the various fields.

The Boeing report continues: When 170 army planes established their southern California base at the United airport at Burbank recently, it marked completion of a year's building of an A-1-A airport. This 240-acre terminal, on the city limits of Los Angeles, has 4,000,000 square feet of surfaced runways.

During the month Sacramento dedicated a municipal airport 15 minutes automobile ride from the postoffice.

Burbank's splendid municipal field is being further developed, while San Francisco has begun work on the building of what promises to be one of the nation's best airports at Mills Field. At Fresno, Boeing System is constructing a new building on the present airport.

### Medford May Boast.

Medford, which boasts of one of the finest airports in the United States, has practically completed the improvements while the neighboring city of Ashland has appropriated funds to build a municipal airport.

Swan Island field, the municipal airport of Portland, is being improved with new buildings and an overhead crossing over the railroad tracks.

With the arrival last week of a Boeing 18-passenger tri-motor at the Tacoma municipal field, that terminal is open for business and will be used by Pacific Air Transport.

At Seattle, substantial investments are being made in Boeing field, the municipal terminal.

Vancouver, B. C., has begun work on a new municipal airport, 19 minutes' drive from the business district.

Improvements being made by Pacific coast cities, say Boeing officials, are indicative of added interest in air travel.

## Janet Gaynor Star of Craterian Film

It was a moonlight night. He was heir to millions, but had no family prestige. She was heiress to social prominence—plenty of bad debts—her father played the market—and an engagement ring from a real, live titled count.

In fact the moonlight was seductive. And the way that lad could make his eye vibrate and the way he could sing and the way that sweet nose could listen and sigh!

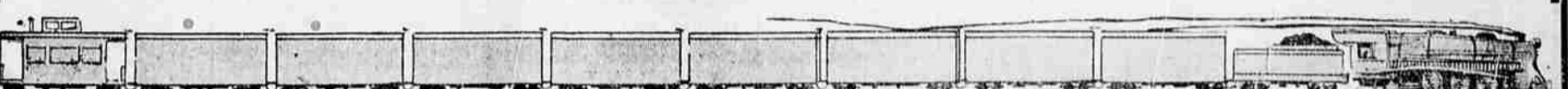
From then on the trouble began. Lovers follow her, chasing in swift succession. Making this newest Janet Gaynor, Charles Farrell musical romance, "High Society Blues," which comes to the Fox Craterian theater tomorrow, the finest effort yet produced with this perfect pair of screen sweethearts.

Instantly attracted without marrying to any smooth surface, a cost-banquer with vacuum grip now is on the market.



Those getting the utmost in results use Anheuser-Busch Budweiser Barley Malt Syrup. LIGHT OR DARK RICH IN BODY NOT BITTER

# Entire Stock Moving at Fast Train Speed



# FORCED

# Close Out! Sell Out! Get Out!

# SALE

All Accepted Ideas of Merchandising Shaken from their Foundations by the Shock of the Profit Demolishing--Cost Obliterating--Price Cutting Campaign--that is Causing this Community to Vibrate with Sales Enthusiasm--Bringing a Merchandise Turnover Unparalleled in Southern Oregon

We are Desperately trying to Dispose of Every Item of Stock and Fixtures before The TIME SET FOR US TO VACATE Re-Lotting--Re-Grouping--Re-Assorting--Using the BLUE PENCIL BRINGS PRICES DOWN! DOWN! DOWN! Quality PROVES It! Value PROVES It!

# RUSSELL'S

<p><b>Wash Fabrics</b></p> <p>New Spring designs, plain and printed. Reg. to 49c.</p> <p><b>23c</b></p> <p>Plain and printed cotton and rayon fabrics. Selling to 65c. at yard</p> <p><b>33c.</b></p>	<p><b>Dresses</b></p> <p>Just one rack of 12 dresses, left to sell at this price. Regular to \$21.50 sellers. Choice at</p> <p><b>\$10</b></p>	<p><b>Silks</b></p> <p>Plain and printed crepes, chiffons and raddims. Sold to \$1.98.</p> <p><b>98c</b></p> <p>Pastel and street shades in silks, selling to \$2.50. Your choice now at</p> <p><b>\$1.49</b></p>	<p><b>Woolens</b></p> <p>Serges and printed challies at just a fraction of their wholesale cost.</p> <p><b>79c</b></p> <p>The very finest of new Spring and Summer woolens, 54 to 56 inches, and selling to \$4.25.</p> <p><b>\$1.78</b></p>	<p><b>Women's Sport Hose</b></p> <p>Imported English wool and rayon. Tans, greys, drabs, browns. Sold at \$2.50.</p> <p><b>\$1.59</b></p> <p><b>Rayon Lingerie</b></p> <p>Women's "Dalby" tricot-lette rayon vests and children's unions. Sold to \$1.39</p> <p><b>69c</b></p> <p><b>Boys' Part Wool Union Suits</b></p> <p>Regular \$1.35 sellers. Sizes to 14 years. "Buy 'em now for later."</p> <p><b>69c</b></p> <p><b>Infants' Knit Goods</b></p> <p>Dalby's cotton undershirts, shirts, vests, panties. Regular to 59c.</p> <p><b>25c</b></p>
---	--	---	--	--