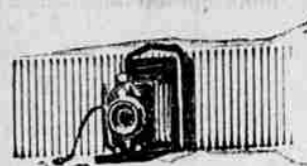




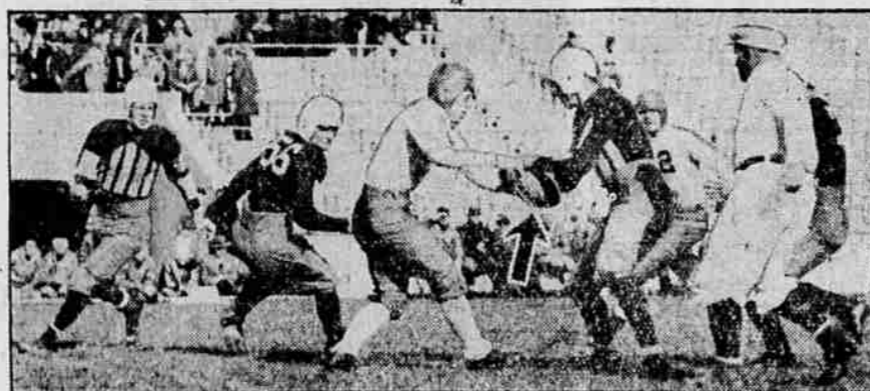
CAMERAGRAMS



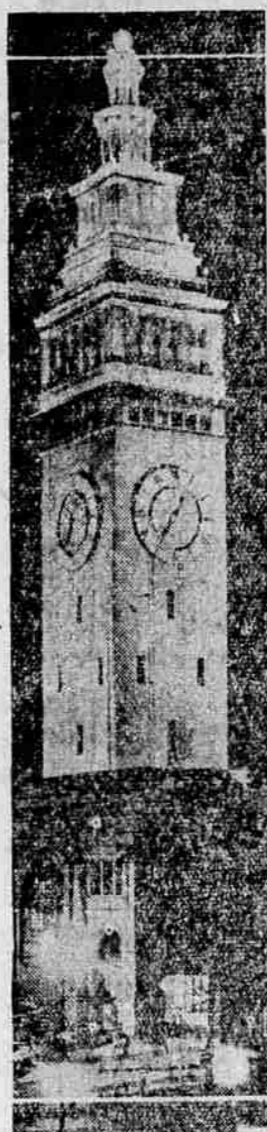
ENVY THE KITTEN—OF COURSE! Born in Loretta Young's hothouse on a Hollywood movie lot, it has been named Pansy and adopted by the pretty screen actress. Now, who wouldn't envy Pansy?



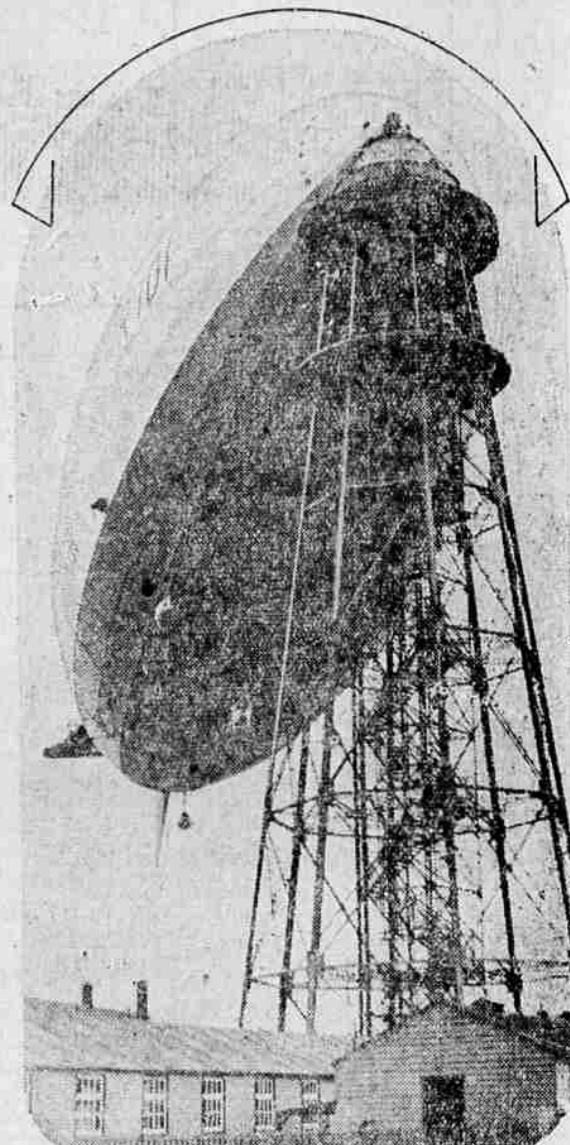
THIS STRIKING AERIAL VIEW OF PITT STADIUM in Pittsburgh shows the huge crowd of 70,000 that witnessed the Notre Dame-Carnegie Tech game. Every seat was taken, for the first time since the stadium was built.



TOGETHER THEY GRABBED A PASS—and here are McLaughlin (white jersey) of Villanova and Bluei of Duke battling for the ball.



A CANDLE OF LIGHT—that is how San Francisco's famous ferry building tower seems to incoming travelers at night. It is a striking scene from the bay.



MOORED AT ITS MAST, the British R-101, largest of airships, presents a most imposing spectacle. The unusual angle from which this was taken shows what an immense mooring post it needs.



READY FOR THE HUNT, these hounds are, and so is Miss J. B. Dawes, one of the few "mistress" of hounds in England. Lucky hunters at Faversham, England, scored successfully with their aid.



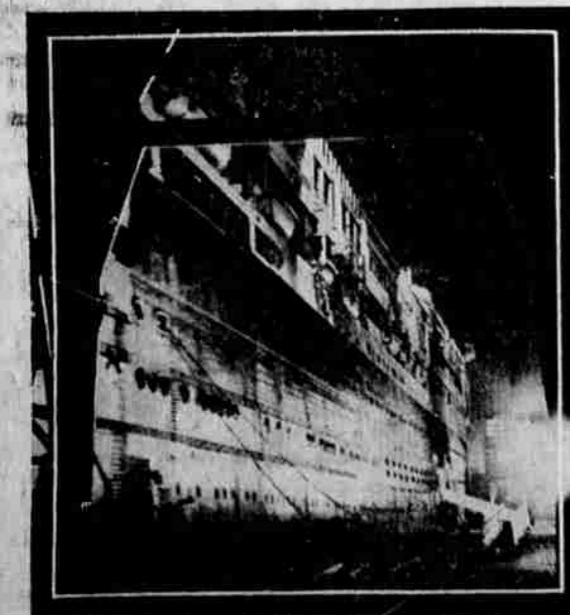
EVEN THE CHORUS seems bent on having long dresses. Pretty Nellie Archer shows above how the well-dressed chorus girl may appear this season.



AND RADIO CLAIMS HER NOW! Phoebe Crosby, an immense success as an operatic and concert soprano, is finding equal distinction on the radio these days.



FRISCO'S CHINATOWN assumed this bizarre appearance when Chinese, watched by thousands of Americans, celebrated the 18th birthday of the Chinese Republic. The buildings are strikingly outlined by the numerous lights.



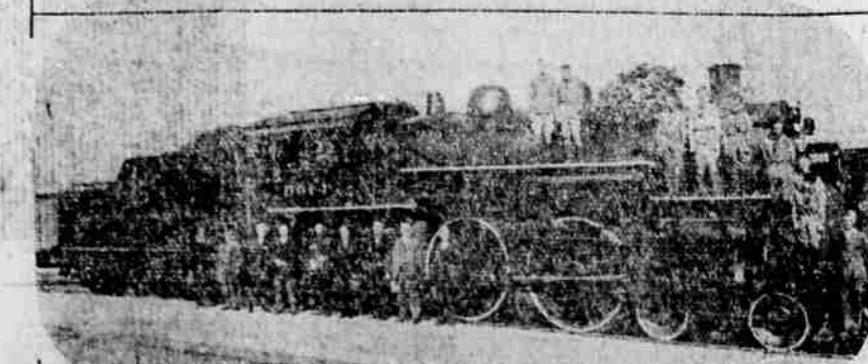
HUGE LINERS ALONG THE DOCKS present an imposing picture when flood lights are turned on, as this view of the largest of vessels, the Leviathan, at Southampton, was snapped.



A BIG-HIT among moviegoers is lovely Marian Nixon. She's played with Al Jolson and with John Barrymore in recent features—and equally important roles are on the way.



GERMANY'S LARGEST SUSPENSION BRIDGE, one of 32 along the historic Rhine, is shown above, with streamers flying during elaborate dedication ceremonies. It is 4300 feet long and connects Cologne and Muhlheim.



IT RAN 1,129,396 MILES—but Big Four locomotive No. 6914, first exhibited at the St. Louis World's Fair in 1904, has been retired from service and it won't run any more!



CAMERAGRAMS

