

**Buster Brown Radio Program On Tonight**

Tonight at 8 p. m. stations KFRC and KOIN and 42 associate

Columbia Network stations will broadcast the premiere performance of "Brownbit Footlites," a new feature of the air which is intended to keep radio listeners abreast of what people the world

over are enjoying according to advance notices received. Clarence Evans shoe store from the Brown Shoes company, St. Louis, who are sponsoring the program, "Brownbit Footlites," accord-

ing to report, will each week give its audience the "high spots" of the most interesting bits of entertainment current that week. A song hit from a new and popular musical show in New York may

be followed by the strains of an orchestra in Paris, or perhaps by a sketch from a London music hall. The period is said to be crowded with a variety of entertainment that will please all the

family, especially since Buster Brown and his dog, Tige, the characters used in advertising Buster Brown shoes, have a sketch of their own on every program. Classified advertising gets results.

**OPENING DAY NEAR FOR JACKSONVILLE THEATER**

JACKSONVILLE, Ore., Nov. 13. (Special) Final arrangements are

being made by Fenton Frank, owner, for the opening day of the new Jacksonville theater. Mr. Frank is having the chairs put in and the two moving picture machines in-

# STYLE and QUALITY at LOW PRICES

We will be glad to help you order merchandise not carried in stock. On all orders from our Catalogue WE PAY POSTAGE AND FREIGHT

You can always be confident that the styles of the garments offered in this store are new, smart and authentic; the workmanship splendid; the materials and trimmings of dependable quality. Ward's

gives you the advantage of the most efficient method of distribution known. We cut costs and you get the benefit in lower prices.

Many articles which will bring comfort and happiness to the home may be bought on WARD'S EASY PAYMENT PLAN



**Modern Women Demand Dainty Personal Necessities**

— And these sanitary goods will please the most fastidious. Made in the daintiest of colors and materials, they are designed to give the utmost in comfort and wear. Their prices place them within the means of every woman.

A LITTLE SATIN GIRDLE to wear under your loveliest frocks hooks on the side. Batiste lined, light front boning, elastic side panels. Flesh or peach. **\$1.00** Sizes 24 to 36.

A SANITARY APRON of fine light gum rubber protects your dresses. A Hickory product. Flesh only. **20c**

A FITTED SANITARY BELT of Hickory woven elastic is just the proper width for comfort. Small, medium, and large. **23c**

COMBINATION SANITARY GARTER BELT—Made of fancy Jacquard rayon, with elastic insertions. **69c**

KOTEX 39c

MONETTE SANITARY NAPKINS are inexpensive — comfortable — hygienic. Highly absorbent; with new founded corners. **23c** Box

**Be Well Dressed and Warm Cold Weather Coats for Boys!**



**Horsehide \$10.98**

The best wearing leather obtainable. Lined with warm, durable half wool Melton cloth. Smart pockets, a 11 round belt.

**Moleskin \$5.98**

Sheepskin lined, big and husky, warm in zero weather. In Brown, extra heavy and durable.

**Heavy Storm-Proof Rubbers To Protect Your Feet**

Men's **\$1.39** Boys' **\$1.19** sizes sizes

Walk through water and melting snow for hours and these semi-storm-proof rubbers will keep your feet warm and dry. Extra heavy soles for extra wear.



**Lumberjack Sports Coats For Grown and Growing Boys**



Elastic Web Waists

**For Men \$2.98**

**For Boys \$1.98**

They're of warm flannel suede that looks like leather and stops the wind like leather. Free and easy in fit to give the muscles plenty of room. Smart pockets. Elastic web waists.

**A Stunning Array of New Fashions Direct from New York**



**Printed Velveteen Frocks \$5.95**

Feather weight woollens — tweeds, covert cloth, jerseys, flannels — go to make the most charming little sports frocks. Tailored lines but with soft feminine details of bows, tucks and plaits that take away all severity. You will want several of them — they are quite the smartest thing for daytime wear.

Sport Dresses \$5.95 and \$9.75

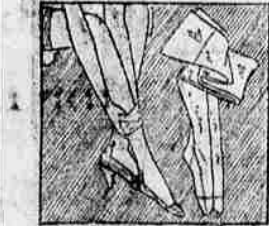
**Silk Frocks Have Frills and Flares \$14.75**

Styles are more feminine than they have been in years. Ward's has a large selection of charming new frocks in satin, canton, silk prints. Higher waistlines, swathed hip-lines, soft touches of lace or batiste are featured. Come in and see them — you'll find them intriguingly new and becoming. Transparent Velvet Frocks, special at \$9.75



**Be Well Gloved \$1.25** With These Gloves at

— In imported gloves of softest Egyptian cotton. Chic embroidered cuff styles or simple slippers. Oak, sand, gray.



**Silk Top-to-Toe \$1.89** A really remarkable value in hose. Novelty To-point diamond heels. Hele reinforced feet. In all the new dusky shades. Underhose 55c Pair

**The Soft Flattery of Rich Soleil Felt \$1.98**

Felt is smarter than ever this year. In black or rich colors it is deftly draped into stunning hats. New off-the-forehead, and long-on-the-side styles.

**Lounge Smartly in a Cozy Quilted Robe \$8.95**

Just the thing for dormitory wear! Tailored robes of lovely quality quilted silk, come in a wide range of pastel and bright colors. Collar, cuffs and patch pockets are embroidered. Sizes 34 to 44.



**To Wear \$1.49 to School**

Smart, youthful, little hats in gay felts, trimmed with a bit of ribbon or a new buckle.



**Winter Togs for Little Girls They Like These Printed \$1.69 Dresses**

— And Mothers will approve of them too. The demure little collar is edged with blue buttonholing, the belt has a bright buckle. There are many cunning styles in our children's section. Sizes 7 to 14.

**Stylish Coats \$4.98 to \$8.98**

Simple, smartly tailored, little coats that are warm enough for the coldest days. Sateen lined, double breasted, with a comely button-up collar. Sizes 4 to 14.

**Ward's is the Place to Buy Hunting Equipment**



**A Shot A Second \$29.98**

Balanced as delicately as a fine watch for greater accuracy, yet rugged enough to withstand years of rough handling and exposure. See it today. It's a value no hunter can afford to pass up.

**Easiest Type to Take Down**

Simple in construction, easy to take down, nothing to jam. Its capacity for firing six shots in six seconds means you're always ready for an emergency without stopping to reload.

**Keep Warm and Dry In this Fine Hunting Coat \$6.98**

While you wait in the blind there's nothing like a Western Field coat to keep you warm and dry. Its heavy duck repels raw rains and wind in grand style. Big blood-proof game pocket, closed end shell loops.



**Red Head Shells Box of 25 95c**

Fast, accurate, hard-hitting loads powered by clean DuPont Smokeless Powder. There is a Red Head in every gauge for every shooting purpose.

**Snug and Warm**

**All Wool Auto Rugs \$5.95**

Extra fine wool, closely woven plain, heavy, heavy, warm, splendid for camping, football games, too.



**Tire Patch Outfit 95c**

Repairs blowouts, punctures, saves money.



**Heavier - Tougher Tire Chains**

Heavier weight and tougher steel insure much longer wear. Lock end fasteners. 29x4.30 30-4x 3/4 Ballroom 11. Pressure **\$4.39 \$3.98**

**Brake Lining Per Ft. 31c**

This lining is standard equipment on many new cars. Mottled type, easily installed.

**Storage Batteries that Give Extra Winter Power**

**RIVERSIDE "Winter King" \$7.39**



With Your Old Battery

"Winter King" is built to stand the strain and drain that winter weather places on a battery. Its extra power starts a cold motor quickly. Dependable day in and day out. Guaranteed for 2 Years

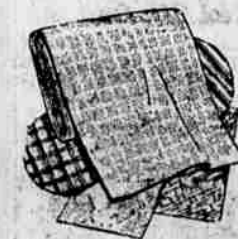
**Togs of Wool for Tiny Tots**

SACQUES—carefully knit of fine wool yarns. . . buttoned ties and ribbon ties. Plain and rayon trimmed. White and pink; white and blue. **98c** Infants' size only.



4-PIECE SWEATER SETS—Cap, Mittens, Sweater and Leggings. Brushed wool. **\$4.98**

**For All Types of Garments Fine Outing Flannel**



Per Yard 36 inches wide **18c**

Fleeced on both sides. Dainty colors and dark plaids and stripes for practical wear. Unusual quality at this price.

**Extra Large—Extra Heavy!**

**Turkish Bath Towels**

22x44 inches. Each **35c**



Highly absorbent. Double loop weave means extra long service. Bleached pure white, hemmed and ready for use. Splendid value.

**Bargain Percale 16c**



Per Yard 36 inches wide

Ideal for house frocks and school dresses! Soft quality cotton fabric that looks well after tubbing. Both light and dark colors in new designs.

**Special Comforters**

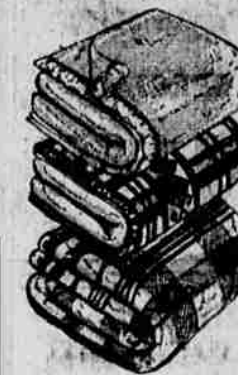
**Insert Borders 70x80 inches \$5.00**



Decorative — colors to match your bedroom furnishings. Flowered challis with insert border of lustrous sateen. Filled with soft new cotton. Blue, rose, gold, orchid.

**Blankets of Cozy Warmth**

All are Full 66x80 Inches



**SINGLE BLANKET** — Two-color reversible, sateen bound ends. Double woven of selected China cotton with a small amount of wool. Green and beige; blue and gold; rose and gold. Each **\$7.90**

**COLOR HARMONY** — Single blanket with double thick velvety nap. . . small amount of wool. . . sateen bound ends. Tan and brown; navy and tan; maroon and . . . rose and tan. Each **\$3.29**

**ALL WOOL BLANKETS** — Colored block plaids, made in pairs. . . 120 blankets in one continuous length. . . blue, spring wool. . . blue, rose, gray; tan, gold; scarlet and black. Ends are sateen. Pair **\$8.98**

**Ideal for Smart Frocks!**

**Rich Silks Specially Priced**



**PRINTED FLAT CREPE**—New Fall color combinations in smart designs. Excellent quality. . . firm weight with the **\$1.98** new dull finish. 39 inches wide. **Yard**

**SATIN CREPE**—Rich dull crepe on one side, lustrous satin on the other. Lovely Fall colors: Green, Brandywine, Cinnamon, French Beige, Black, White. 39 inches wide. **Yard \$1.79**

**BATH MATS**

Standard Quality **79c**

Handsome new design. . . fast colors, reversible. Double loop construction, very absorbent. Green, rose, blue.

**A BARGAIN**

3-Piece Bath Set **85c**

One towel 17x34 in., two wash-cloths 12x12 in. Fast color borders. Absorbent Turkish weave. Gold, pink, green, blue.



# MONTGOMERY WARD & CO.

117 S. Central

Phone 286

Medford, Ore.

