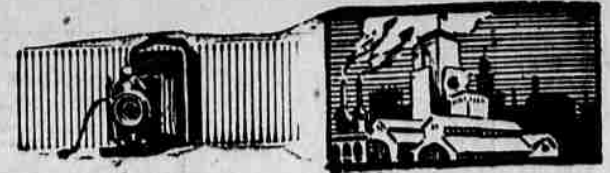


CAMERAGRAMS



THOSE BRILLIANT EYES of Betty Bronson tell—well, what? But any young man would be proud to have that I'm-so-proud-of-you look from Betty fastened upon him—and why not?



LEADING SOPRANO soloist of the National Capital Choir at Washington is Irene Koehl, above.



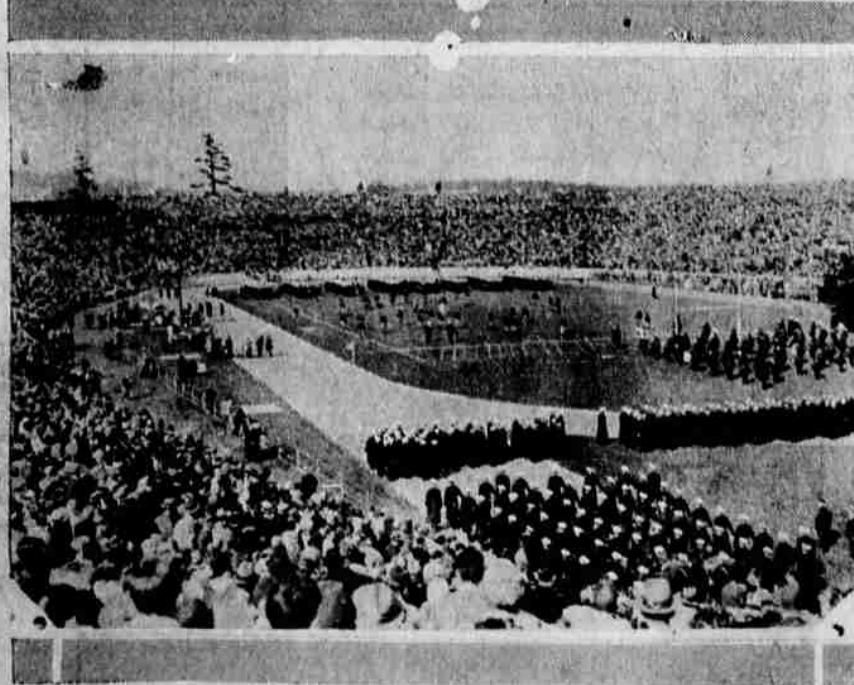
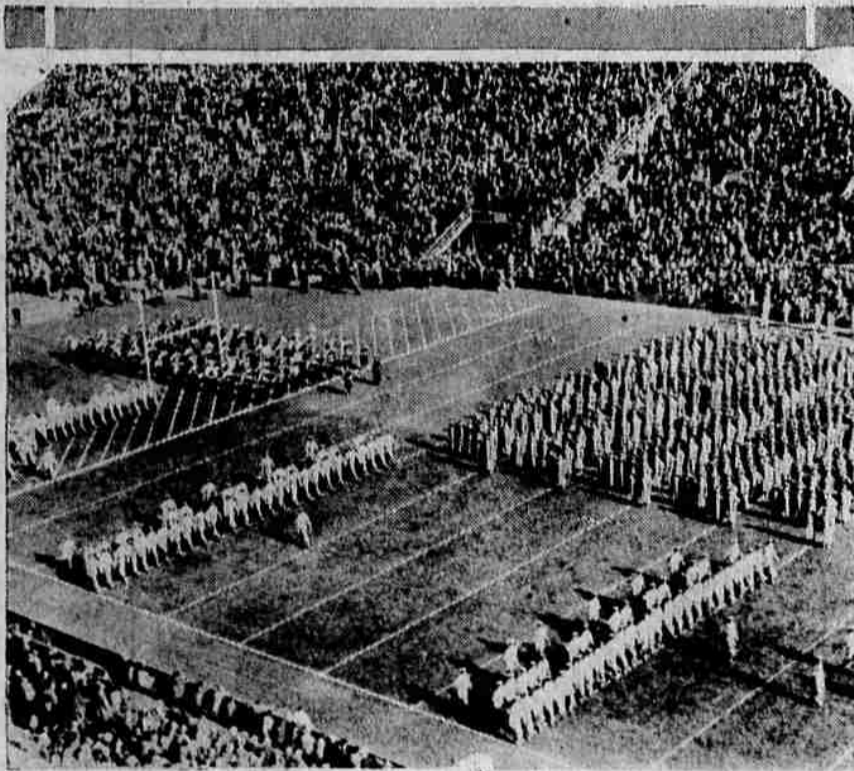
MEMORIAL WINDOWS for the rebuilt Belleau Memorial Chapel in France have been designed by Wilbur Herbert Burnham, Boston stained glass expert. Above is one of the designs.



HERE'S A STRIKING AERIAL VIEW OF THE HUGE ST. LOUIS ARENA, one of the largest show places in the world which will be the permanent home of the National Dairy Exposition. The main building covers more than a quarter mile of ground, and each of the side buildings occupies approximately the same space. The arena, constructed without a single post, seats 21,000. It is intended for use as a convention hall, a site for industrial exhibitions, grand opera concerts, boxing matches, circuses and other needs.



STATUESQUE LEAPS that bear all the grace one could desire are all in the day's work for Harold Ames, featured dancer. Above are two of the graceful leaps which Ames makes at every performance of his troupe.



WEST POINT CADETS AND ANNAPOLIS MIDDIES ON PARADE—but, unfortunately, not on the same football field. Above, the Cadets are pictured as they swarmed across the field to get their seats before one of the early season games, and, below, the Middies are shown as they went through a drill between halves of one of their opening victories. They present striking scenes.



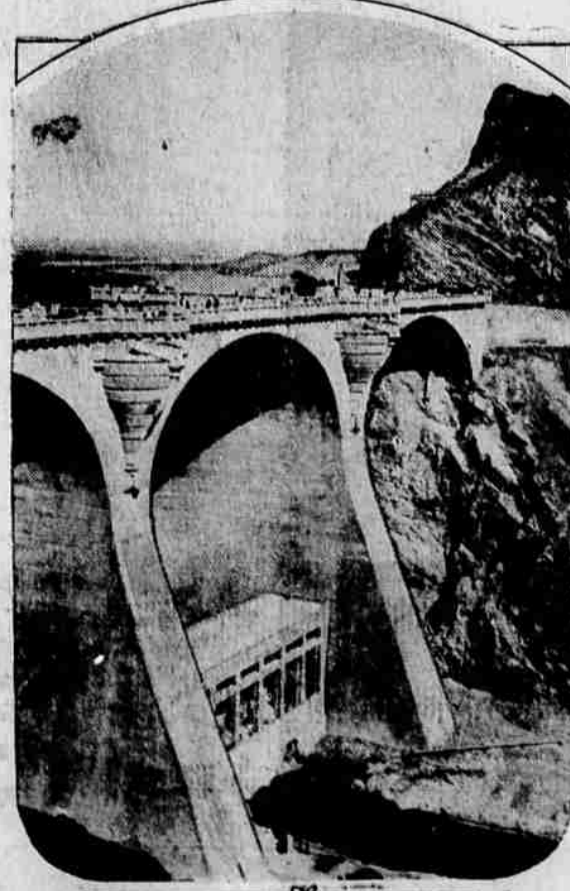
A FAMOUS ACTRESS SEES HERSELF as another sees her. Above, Irene Bordoni, Parisian musical comedy star, inspects a bust of herself sculpted by Gourset, Paris caricaturist. It looks like Miss Bordoni seems well pleased with her gift.



ARISTOCRATIC, high in rank among Indian officials, is Sir Prabhanshar Pattani. He is on the staff of the Prince of Wales.



MAKING WHOOPEE BY TOM-TOM is what this juvenile Indian dancing troupe is doing at Glacier National Park. If this were not 1929, one might think it a practice war dance in native costumes.



THIS DAM WILL IRRIGATE 40,000 ACRES. It's the recently completed Coolidge Dam on the Gila river in Arizona, the reservoir of which is now being filled. Water may flow over the dam this winter.



ALL EYES—so seems a pigmy-lemur from Madagascar. This baby, born en route to England, and her mother are newcomers to a London zoo.



ATMOSPHERE OF SPANISH CALIFORNIA pervades this newest of buildings on the campus of Stanford University. It's the new Students' Union.