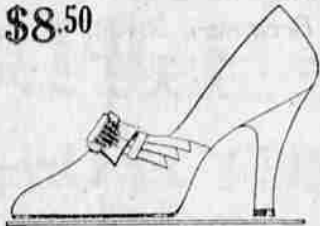


BROWN SHOES Lead the Fall Parade

In their color predictions for every fall, one of the greatest style organizations, with which we are associated, says: "Not only is brown being featured in costume shades in tweeds, plain fabrics and evening nets, but it is the accessory color also. Brown hats, bags and shoes will be more important than ever this season."

Brown Suede Pump
Lizard Trim, Spike Heel

\$8.50



Correct Hosiery Shades

With the new brown costumes and shoes, one will wear the deeper tones of beige and medium browns, sometimes to match the fur, sometimes the shoe.

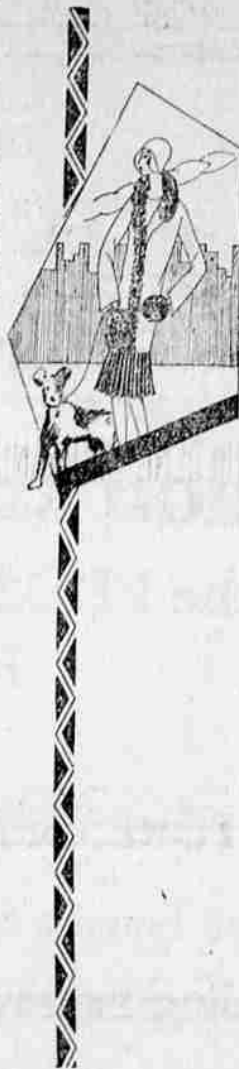
STEEPLE HEEL HOSIERY

\$1.75 and \$1.95

BLACK POINTED HEELS

\$1.95 and \$2.25

THE Bootery
123 S. Central
Medford, Oregon



COURT OF HONOR FOR ASHLAND DISTRICT IS OUTLINED AT MEETING

ASHLAND, Ore., Oct. 22.—(Special.) Plans have been perfected for the organization of a court of honor for the Boy Scouts, that will serve the territory from Talent to the California line. Heretofore it has been necessary for the Ashland Scouts to make a trip to Medford to appear before a court of honor.

The plans were discussed at a meeting, which was held on Thursday evening at the city hall. John Enders was appointed to act as chairman of a committee to arrange for the organization of the district, and another meeting will be held on next Thursday to finish the details of the organization.

Those who were present at the first meeting were Matt Thompson, Clint Baughman, J. Ed Thornton, Edwood Hedberg, John Enders, J. A. McGee, Dr. Hanson, Rev. C. D. Gaffney and Ray Clary.

RICHFIELD TAKES OVER PEERLESS OIL

Acquisition of the properties and business of the Peerless Oil company, operating in Pennsylvania and New Jersey, by the Richfield Oil Corporation of New York, a subsidiary of the Richfield Oil Company of California, was announced yesterday by C. M. Fuller, president of the latter company.

According to Mr. Fuller, this purchase involves 167 retail filling stations, with an aggregate annual sales volume of 20,000,000 gallons of gasoline and an appropriate quantity of lubricating oils. Including the Peerless, Richfield of New York has acquired four chains on the Atlantic seaboard in recent weeks, the others being the Cleary Service Stations at Rochester, N. Y., the Heath Oil company at Birmingham, N. Y., and the Lamson Oil Company at Providence, R. I.

FRENCH AND ATWOOD SELL TO PARKHURST

The second change in ownership of a local real estate agency to take place within the past two weeks was the sale of the French and Atwood business on North First street to H. O. Parkhurst. The new owner took possession Monday, Oct. 21.

Daily Meteorological Report

Oct. 22, 1929

Medford and vicinity: Fair and mild tonight and Wednesday.

Oregon: Fair and mild tonight and Wednesday.

Local Data

| | | |
|---|-------------|-------|
| Temperature (degrees) | 59 | 38 |
| Highest (last 12 hours) | 76 | 69 |
| Lowest (last 12 hours) | 35 | 38 |
| Rel. humidity (per cent.) | 39 | 88 |
| Precipitation (inches) | 0 | 0 |
| State of weather | Clear | Clear |
| Lowest temperature this morning | 35 degrees | |
| Total precipitation since Sept. 1, 1929 | 1.14 inches | |
| Temperatures a year ago today: | | |
| Highest 71; lowest 30 | | |
| Sunset today, 5:19 p. m. | | |
| Sunrise Wednesday, 6:33 a. m. | | |
| Sunset Wednesday, 5:18 p. m. | | |

Observations Taken at 5 A. M., 120th Meridian Time

| CITY | Highest Temp. Past 24 Hrs. | Lowest Temp. Last Night | Weather |
|---------------|----------------------------|-------------------------|---------|
| Baker City | 66 | 34 | Clear |
| Bismarck | 50 | 36 | Cloudy |
| Boise | 68 | 48 | Clear |
| Denver | 68 | 46 | Clear |
| Des Moines | 58 | 40 | Cloudy |
| Fresno | 88 | 58 | Clear |
| Helena | 54 | 32 | Clear |
| Los Angeles | 100 | 70 | Clear |
| Marshfield | 80 | 42 | Clear |
| Phoenix | 96 | 58 | Clear |
| Portland | 72 | 54 | Clear |
| Red Bluff | 94 | 54 | Clear |
| Roseburg | 72 | 52 | Clear |
| Salt Lake | 60 | 50 | Clear |
| San Francisco | 58 | 62 | Clear |
| Santa Fe | 68 | 38 | Cloudy |
| Seattle | 66 | 52 | Clear |
| Spokane | 66 | 48 | Clear |
| Walla Walla | 72 | 46 | Clear |
| Winnipeg | 28 | 28 | Clear |

O. K. ANDERSON, Temporarily in Charge.

Flynns Return to Medford to Reside

The many friends of Mr. and Mrs. Diamond Flynn will be glad to know they have returned to Medford to live, after a year's absence.

They lived in Medford for many years, prior to moving to Grants Pass and Mr. Flynn was electrician for nine years at the Peoples Electric store. He is again connected with this firm and has charge of the electrical department.

Fuzzy-Wuzzies at Craterian Theatre

Foremost critics say it is one of the great pictures of the year, certainly it is a great picture of action. Imagine, if you can, a rainfall of what seems to be hundreds of hippopotami, their huge bodies splashing down into a stream of water over a lofty slide. Imagine, too, the bizarre effect of hundreds of fear-crazed baboons scurrying from a bright fire across a swaying tropical bridge. Some of it is illusion, but it is good illusion. Then for the rousing climax, on a greatly enlarged screen first made familiar to theatre-goers with "Old Ironsides," there is an old-fashioned battle between the British soldiers and the Fuzzy-Wuzzies.

Richard Arlen as the young lieutenant who resigned his commission and thereby prompted his three brother officers and his sweetheart to give him the four feathers, has done here the finest playing of his seven-year career.

A superb cast includes Clive Brook, William Powell, George Fawcett, Fay Wray, at Craterian tonight.

Hood River—Agitation under way for better street lights.

"BEAUTY CARE right in your own Dishpan"



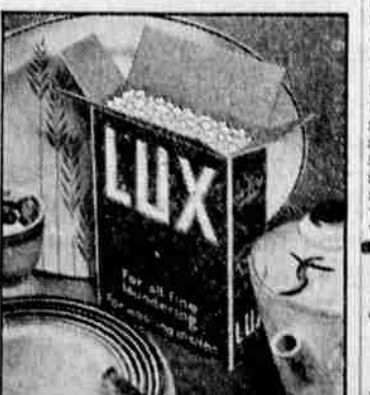
305 Famous Beauty Shops find:

"... With all our experience, we actually cannot distinguish between the hands of a woman of wealth and leisure and the hands of a woman who uses Lux in the dishpan..."

HAVE you envied the smooth, white hands of the woman with servants to do all her work? Now millions of women who wash dishes every day of their lives have hands just as truly lovely—because they use Lux in the dishpan!

Beauty experts know the reason... know that many soaps dry up the precious beauty oils of the skin, giving the hands a horridly red, drawn, "work-worn" look... while gentle, bland Lux soothes and protects the beauty oils—keeps hands smooth and white! That is why 305 famous Beauty Shops call Lux "beauty care right in the dishpan."

Give your hands this wonderful beauty care—the wisest, most inexpensive known! Lux for all your dishes costs less than 1¢ a day!



(Left) Scene in New York beauty salon... Experts in such famous shops agree that the woman who uses Lux in her dishpan gives her hands real "beauty care."



WHEN YOU BUY AT BURLESON'S YOU BUY RIGHT

WOW... What a Sale!

Hundreds of New Dresses Hundreds of New Hats
Go on SALE

Wednesday—Thursday—Friday—Saturday



Felt Hats
EXTRA SPECIAL!
1 lot of 50 New Felt Hats. A special purchase for this sale. Value to \$6.95. Sale price—
\$3.87

| Felt Hats | |
|-----------------|-------------------|
| Regular quality | Sale Price \$1.27 |
| Regular quality | Sale Price \$1.87 |
| Regular quality | Sale Price \$2.87 |

FELT HATS

All our regular stock of better Hats in all the new shapes and wanted colors. Regular prices \$5.95 and \$6.95.

All go at
\$5.00

New Dresses

We just received hundreds of new Dresses last week which will be put on sale during these four days at very low prices



NEW FALL DRESSES

A group of 135 fall dresses. The newest in style and wonderful quality of velvet, satin and crepe.

Misses' sizes 14 to 20 Women's sizes 36 to 56

EXTRA SPECIAL **\$8.77**

NEW FALL DRESSES

\$5.00

Velvets, Satins, Crepes; colors, Black, Brown, Wine, Green, Rose and Printed Crepe. Values in this lot up to \$12.95.

ELEVEN DOLLARS

\$11.00 Buys you a Brand New Dress just unpacked—two-piece Jacket Dress or one-piece Dress—in fact, most any style of dress you have in mind. Sizes 14 to 52.

DRESSES--the Wonder Lot

Satin Crepes, Velvets. Misses' sizes 14 to 20, women's sizes are a fraction in this group—size 36 to 52.

Wonderful values at **\$14.88**

House Dresses

Sleeveless House Dresses. Values to \$3.95. To close out **\$1.00**

Printed Crepe Dresses

Sleeveless Printed Crepe Dresses. Misses' sizes. Special **\$3.95**



Follow the Crowds to **Burleson's** 101 S. Central Phone 28
POPULAR PRICE STORE
20% Discount on All Cloth and Fur Coats
Buy Your Dresses at Burleson's and Bank the Difference