

**TWELVE BABIES VISIT CENTRAL POINT CLINIC**

CENTRAL POINT, Ore., Oct. 10.—(Special.) A clinic was held at

Central Point Health center on Tuesday with Dr. Bolcom and nurse, Mrs. King, in charge. Twelve babies were present. Much interest is being taken in the meetings of this group of workers.

**Must Go to Cell.**  
CINCINNATI, Oct. 10.—(AP)—Bert Buckley, former state treasurer, lost his fight to escape serving a two and a half year pen-

itentiary term and paying a \$1,000 fine for attempted bribery of a prohibition officer when the United States circuit court of appeals refused today to grant him a rehearing of his appeal.

**Frost in LaGrande.**  
LA GRANDE, Ore., Oct. 10.—(AP)—The first severe frost of fall hit LaGrande last night and was accompanied by 39 degrees above zero weather.

**LaGrande Plays Nampa.**  
LA GRANDE, Ore., Oct. 10.—(AP)—The LaGrande high school team faces its first big game of the season here tomorrow against Nampa, Ida., high school football squad.

**Mrs. Wilson Honored.**  
TOKYO, Oct. 10.—(AP)—Prince and Princess Chichibu today gave a dinner at their Omotescho palace in honor of Mrs. Woodrow Wilson, who is now visiting here.

**Regent Suicides.**  
MADISON, Wis., Oct. 10.—(AP)—M. H. Olbrick, 48, University of Wisconsin regent and Madison attorney, committed suicide by hanging in his home today.

The best advertisements and most appreciated Ward's can have are statements made by our customers of their satisfaction. Frequently they tell us face to face, many times they write us of the exceptional bargains our store offers, because of our efficient nation-wide distribution and great buying power.

Here are values, this week, which we believe are typical of the many savings you may make.

**You Can Be Smartly Gowned At Moderate Cost—Note Those Values**

Our Fall stocks are ready! New styles—new colors—new materials—everything to complete a chick ensemble. Shop now—for first choice.



**Fine Crepe Girdle**

Rayon Striped Elastic **\$1.69**

Light front boning for added grace. A Paris idea of loveliness. Soft rayon, crepe de chine.

**Fine Rayon \$1.49 Combination**

For slenderizing lines but full enough for comfort. Reinforced crotch design with double gusset. Elastic at the knees; opening at left leg.

**Shortie Bloomers 98c**

For the new fashion slimsness. Elastic around legs; yoke front guarantees a faultless fit.



**Comfort and Service Union Suits \$1.49**

A medium weight suit of glove fitting smoothness. Of finely ribbed cotton. Lightly fleeced. Flat locked seams; open seat with large smooth fitting gusset; Dutch neck, elbow sleeves, ankle length. The same garment for stout figures at \$1.69.

**Flannelette Gowns at \$1.00 \$1.69**

Varied styles make selection easy. Of novelty stripes or white, with braid and hem-stitching trim. Double yokes insure extra warmth and wear. Some of V and round neck styles; others with high turn-over collars. Buy several at this price!

**Envelope Purses 98c**

Unique Styles To correspond with modern fall costumes. Plain leather with novelty trims of contrasting colors and stitchings. Well tailored, neatly lined; fitted with coin purse and mirror. Envelope style with snap fastening.

**Dressy Coats \$39.75**

Look Smart—Feel Warm

Soft materials that cling gracefully... including broadcloth. Fine tailoring... excellent workmanship. New side flares and straight line models.

**Chic Frocks \$9.75**

For Many Occasions

You can afford several at this modest price! A variety of styles in flat crepes and canton crepes. Many with pleated skirts and graceful flares.



**New Lines of Youth Famous Sta-Down \$1.19**

Smooths the figure into graceful slenderness! Combination corset and brassiere in one piece. Elastic inner belt... flexible back boning. Rayon-striped poplin.

**Girls' Dresses Smart Style \$3.98**

For the young miss who dresses in the latest mode. The trim collar and cuffs with their narrow pleated frills, and the jaunty bow at the neck give just the proper trimming. The skirt is a copy of the newest autumn models with pleated details. The belt ends at the left in a jaunty bow with sash ends.

**Girls' Hats New Mode \$1.49**

An off-the-face brim features this little hat with its ribbon trim.



**Novelty Pajamas \$1.49**

Well Tailored Pajamas in a novelty cotton print of blue and tan will attract the discerning buyer. The convertible collar may be buttoned snugly about the neck to give added warmth and protection. Coat of print—with collar, cuffs and pocket of plain broadcloth. Trousers—plain with print cuffs.

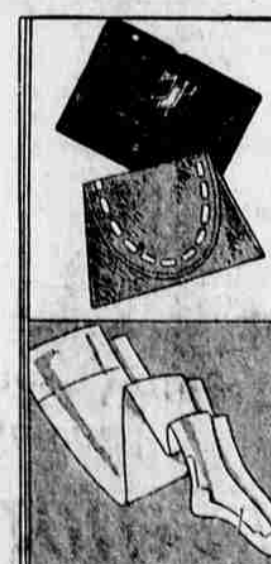
**Hosiery for All Occasions Full Fashioned—Pure Silk**

**Chiffon \$1.39**

That sheer, dainty appearance so desired by the woman who dresses modestly. A reinforced silk-covered toe and heel insures extra wear. Take advantage of this attractive price.

**Girls' Coats Outstanding Styles \$8.98**

An all-occasion coat that will delight the most fastidious little girl. The soft fur collar and cuffs give warmth and add that flattering touch that only fur trimming can give. Well tailored of all-wool material with durable lining.



**Service \$1.49**

Shimmering loveliness combined with that long wearing quality so appreciated by the woman who needs a utility hose. All pure silk to the lisle garter hem. Lisle slipper sole, toe, and heel.

**Buy Your Blankets Now and Save Money**



- Colorful Block Plaids**—Live springy wool. Two blankets woven in one continuous length. Sateen bound ends. Blue, Rose, Gold, Hello, Green. Also scarlet and black. An outstanding blanket value. 70x80 inches. **\$8.98**
- Fleecy Down Blankets**—“Old Home” quality. Warmly fleeced on both sides. Lockstitched ends. White, Gray, Tan, with colored borders. 70x80 inches. **\$3.25**
- Special Cotton Blankets**—Fluffy and warm. Fine for cool nights the year round. Made of fine cotton yarns... firm weave. 70x80 inches. **\$2.39**
- Decorative Comforters**—Covered with fine cotton challie with lustrous sateen for the double insert border. Filled with soft new cotton. Blue, Rose, Gold. 72x84 inches. **\$7.89**



**New Breakfast Sets**

For Small Rooms **\$15.85** Five Pieces

Quantly charming—and new! A soft green shade, artistically decorated! Fiddle-back chairs with saddle shaped seats; dropleaf table; gracefully designed server. A real home value!

Other Breakfast Sets \$00.00 to \$00.00

**A Fine Rug—The Proper Setting For Beautiful Furniture**

Administers from \$24.50 to \$48.50

The high soft nap of All Wool pile on a firmly woven back gives the Axminster an unusually luxurious appearance and a long wearing quality. You will be entirely satisfied with our fine assortment of new and beautiful patterns. Our 9x12 Axminster seamless rug is a value which the well-informed buyer will be quick to appreciate.

Wiltons and Velvets from \$21.50 to \$128.95

We have also an interesting collection of Wiltons and Velvets in lovely colors and pleasing designs. A visit to our rug department will be a delight to your eye and a satisfaction to your economy sense.

**Part Wool Union Suits**

Extra Heavy **\$2.98**



Extra heavy for winter warmth and tailored to give a perfect fit. Securely sewed buttons and reinforced strain points are special features men appreciate.

**Rest While You Sleep! Felted Cotton Mattress**

Unusually Low Priced

**\$10.85**



Built up layer on layer of full 50 pounds of all-felted cotton! Durable art ticking. A restful night's sleep insures health!

See Our Fine Mattresses

**\$7.25 to \$23.95**

**Glorio Prints**

Are Lovely for Frocks

An exquisite fabric of mercerized cotton yarns. Smart color combinations in new designs. Fine quality. 36 in. wide. **Yard 36c**

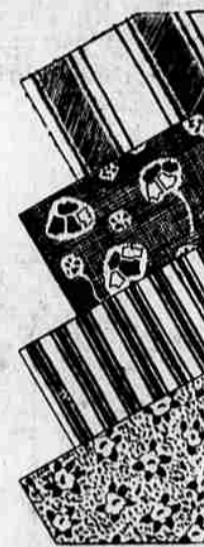
**WARDTEX CRASH**—Exceptional value! For all to well fitting. Glass, Roller, Individual, etc. Colored borders. Part linen. **Yard 13c**

**SOFT FINISHED PERCALE**—For your frocks and the youngsters! Smart for many home uses. 60, 36 in. wide. **Yard 16c**

**SHAKER FLANNEL**—Durable for warm undergarments. White only. 36 in. wide. **Yard 18c**

**OUTING FLANNEL**—Fleeced on both sides, dainty colors, dark plaids. 36 in. wide. **Yard 18c**

**FEATHER-TITE TICKING**—Standard 3-oz. quality. For pillows or work aprons. 32 in. wide. **Yard 32c**



**Marquisette Panels**

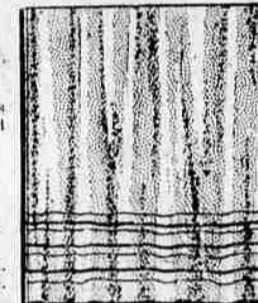
Per Pair **98c** 35 Inches Wide

A new style leader! Three rows of bouillon ruffles. A splendid curtain value for the thrifty.

**Rayon Marquisette**

Per Yard **36c** 39 Inches Wide

Serviceable weave of rayon. Wears long and launders well. Sheer—but strong.



**WARD-O-LEUM RUGS**

Send Sheer and Color! and Give Long Wear!

Size **\$8.25** 9x12



Sanitary—water-proof—easy to clean. Tough felt base, lustrous paint surface. Smart new designs.

Other Rugs \$3.35 to \$11.20

Keep Your Home Free From Dust and Dirt

**Majestic Cleaner \$40.85**

Also Sold on Easy Payments

See it demonstrated in this store! Ball bearing motor, motor bearing brush. Easy to operate. With attachments or without. Heating, sweeping suction that thoroughly cleans.

Easy to Operate



**Lamps of Color and Beauty**

Specially Priced

**\$8.50**

Artistically designed floor lamps with plated metal bases and attractive parchment or rayon shades.

Other Lamps \$4.95 to \$32.50



As Advertised in THE SATURDAY EVENING POST of October 12

Enjoy Healthful Warmth in Every Room! The Cheery Glow of an open Fireplace!

A Real Heat Circulator

**Fireside Windsor \$88.45**

Heats 4 or 5 Large Rooms

Designed like a radio cabinet! Two ornamental grill doors are backed by copper colored metal. Finished in walnut enamel, will not burn off. New, different substantial heating unit; large cast iron fire pot with large grate surface. See it now. Burns Hard or Soft Coal or Wood. Sold on Easy Payments



**New Efficiency in a Coal Range!**

New Colors in Porcelain Enamel Better Cooking Performance with Less Fuel on This

**Fireside \$106.45 Windsor**

Oversize cooking top—requires no blacking. Body walls of keystone copper bearing steel and Armo iron, full porcelain enameled inside and out. Duplex rolling grates burn either coal or wood. New design warming closet.

New Beauty for Your Kitchen!

Also Sold on Easy Payments!



**MONTGOMERY WARD & CO.**

117 So. Central

Phone 286

Medford, Oregon