

# COMING COUNTY FAIR, SEP. 11-14 WILL ECLIPSE PREVIOUS EVENTS

This year, with enlarged buildings, greater entertainment program, the co-operation of all the various units of the county and general spirit of enthusiasm for the annual exposition which the board of directors have encountered, the Jackson County Fair and Oregon Year Show, scheduled for September 11 to 14, inclusive, promises to eclipse all former records.

Again this year, the changes of the county will cooperate in collecting and arranging horticultural and agricultural exhibits for their respective districts, which insure the success of this department.

**Entertainment Program**

A comprehensive entertainment program has been lined up. The track will be improved and it is expected a large number of horses will be present to compete daily in harness and running races for the enjoyment of the midday and there will be a rodeo featuring Roman stunts, trick riding and fancy roping stunts.

There will be several other free attractions and grand display of fireworks every evening. There will be plenty of music, while riding devices and concessions will provide amusement for the midday and there will be dancing in the large pavilion throughout the four evenings of the fair.

**Premiums of \$10,000**

The premium list, containing a list of everything on which there are prizes offered, amounting to \$5000 or \$10,000, has been out since

and can be secured at the Chamber of Commerce, banks or newspapers, anywhere in the community. Get a list and prepare to help the fair.

The interior of all the buildings are being prepared for the coming fair, and the exterior were repainted this spring.

**Special Days of Fair**

The special days this year are as follows:

Wednesday, Sept. 11—Children's day.

Thursday, Sept. 12—Medford day.

Friday, Sept. 13—Ashland day.

Saturday, Sept. 14—Grains and Grants Pass day.

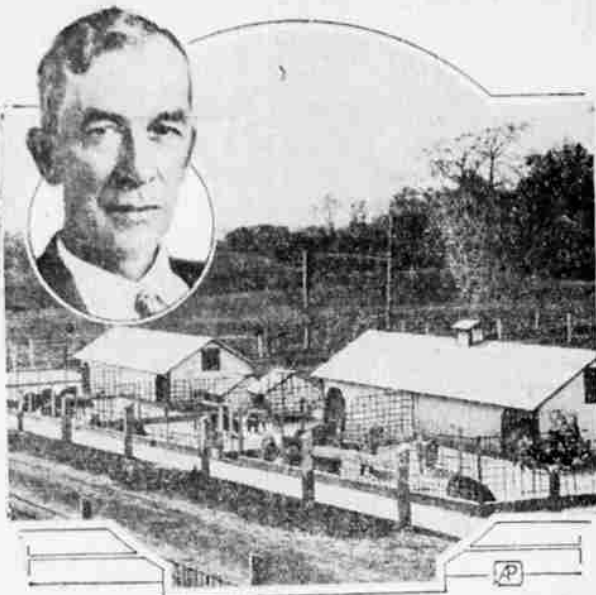
The first day is to be a regular fair day, with one of the best programs of sports of the whole week. The children of school age are all to be admitted free on Wednesday this year and school will close for the day.

**Season Tickets Reduced**

Another special feature will be the change in price of season tickets from \$2.50 to \$1 for everybody. This ticket will admit the owner to the fair every day and night, the regular price of which, sold each day and night, would be \$1. Everybody is asked to buy a season ticket. There is to be no free list, except children on Wednesday.

The office of R. G. Fowler, secretary, is in the Liberty building now. The office will be located at the fair grounds later on. Dan Herring is the assistant secretary again this year.

## DIET'S EFFECT ON HEALTH SOUGHT IN STUDY OF PIGS



Insight on the influence of nutrition is sought by scientists co-operating in a study of pigs on one of the farms of the bureau of animal industry. Dr. S. S. Buckley (inset) is in charge.

WASHINGTON (AP)—Pigs may be pigs to the layman. To a group of scientists, however, they are a valuable laboratory animal through which the vital human problem of the effect of diet and nutrition on teeth, bones and health may be solved.

A carefully planned investigation is being pursued on a department of agriculture farm through cooperative activities of the American Dental Association, Johns Hopkins University, and the animal husbandry division of the bureau of animal industry.

Human beings may not be studied directly, but from the lessons learned on the effects of diet on teeth and bone development in swine, scientists hope to carry on carefully controlled experimental work, which will be applicable to man.

Blood relationships, the quality and quantity of diet of experimental animals, and their progress are recorded through a series of examinations. The rate of growth and finally the opportunity of the experiment station in a few years. This can be done on some farms by eliminating extra horses, by carefully planning and concentrating the cropping system to reduce the number of horses required, or by finding new profitable farm enterprises that will keep busy the horses that must be kept anyway.

Most of the commercial plantings of Oregon walnuts are at present in the Willamette valley, with a few small plantings in the Umpqua and Rogue River valleys. The humid condition of the coastal section is favorable to bacterial

## DAIRY FARM COST SURVEY BEGUN BY COLLEGE FACULTY

OREGON STATE COLLEGE, Corvallis.—(Special.) A state-wide cost and economic study of the dairy industry, involving 300 dairy farms and extending over a period of two years, has been undertaken by the dairy and farm management departments of Oregon State college, working cooperatively.

This project, the most extensive of its kind ever conducted in the United States, will be carried on cooperatively with federal funds, made available under the Parcell act. H. D. Fessler, professor of farm management, and P. M. Brandt, professor of dairy husbandry, will supervise the study while Prof. H. E. Selby of the department of farm management will be in charge of the field work, and will supervise the actual gathering of information.

Of the 300 farms involved, 300 will be in the Willamette valley, 100 in the coast section and 100 in eastern Oregon, in order to determine the economic importance of the industry in Oregon agriculture, and in what regions of the state, on the basis of comparative costs prices and markets, the enterprise can most profitably be encouraged and increased.

Cost of dairy farm production in the different regions and on the various types of dairy farms will also be studied to determine means of reducing costs to meet increasing competition.

The total number of farms included in the study will be divided among the counties in relation to the importance of the dairy industry in each county, and county agricultural agents will cooperate with the experiment station by compiling lists of the dairy farmers in their counties. From farmers included on the lists thus compiled data for the investigation will be gathered.

The total number of farms included in the study will be divided among the counties in relation to the importance of the dairy industry in each county, and county agricultural agents will cooperate with the experiment station by compiling lists of the dairy farmers in their counties. From farmers included on the lists thus compiled data for the investigation will be gathered.

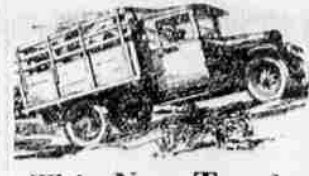
Light to which the walnut is very susceptible, while walnut growing west of the Cascade mountains is generally limited by cold winter temperatures and spring and fall frosts. In only a few places can walnut growing in eastern Oregon be considered on more than a home-orchard basis finds the experiment station.

WHELAN (AP)—Blood and judgment, sets at 22 cents a day is offered by the German Animal Protective Association. The felix dominator has 38 companions. He's a tough of which is an open air march accompanied by a light breeze.

come grass-grown like rural lanes and are obliterated. Forests decay, harvests perish, flowers vanish, but grass is immortal. Recovered by the sudden heats of winter it withdraws into the impenetrable fortress of its subterranean vitality, and emerges upon the first solicitation of spring, sown by wandering birds, propagated by the subtle horticulture of the elements which are its ministers and servants, it softens the rude outline of the world. Its tenacious fibres hold the earth in its place, and prevent its components from washing into the waste sea. It invades the solitude of deserts, climbs the inaccessible loaves and forbidding pinacles of mountains, modifies climates, and determines the history, character and destiny of nations. Unobtrusive and patient it has immortal vigor and aggression, banished from the throne of the field it adds its time to return, and when vigilance is relaxed, or the dynasty has perished, it silently resumes the throne.

PARIS (AP)—Horace Ashton of the American Academy of Sciences returned recently from the Sahara where he said he found evidence that the cave dwelling tribes of the desert are related to the Celts. His theory is that the race migrated from Asia through the Sudan and Sahara to the Basque country of Spain and thence to Scotland and Ireland.

WATSAW (AP)—While 38 per cent of the students of Watson University are women, only 2 per cent of the faculty are women. Most of them stand in the halls of learning for matrimony.



This New Truck will **Out-Pull** **Out-Climb** and **Out-Perform**

All Others of Similar Rating Under Full Load

We have a new truck here at our place that is entirely different from any other light truck on the market—it has 6 speeds forward and 2 reverse. And the difference shows up mighty plain when you run up against steep grades, plowed ground, deep sand, soft meadows, ditches, snow, etc. The SIX-SPEED SPECIAL is ahead of the others because it is built to go ahead on just the kind of work that folks around here have to do.

It is an ideal truck for the farm, and it fills the bill with merchants, too. Anybody who has to haul loads over good roads and bad will like the SIX-SPEED SPECIAL.

We are demonstrating it every day, so don't feel backward about asking us to show you what this truck will do. It backs up every thing we say about it—and its low price will surprise you.

ELWOOD'S AUTO-SHOP  
118 So. Central Ave.  
Medford, Ore. Phone 750



### VULCANIZING

We use the Hawkson System to Vulcanize Your Tires. Guaranteed to Last the Life of the Tire.

Phipps Auto Park Service

LEE & Conshohocken Tires

**Farm Notes**

Green feed for both the young poultry stock and the layers is essential during the warm summer weather, says the Oregon experiment station. If carefully green feed is not available, 5 per cent of a good grade of alfalfa may be mixed in the mash as a substitute.

White and yellow shivers with blue grass and two grass forms the principal disease in sheep pastured at the Oregon experiment station, and has been found to have a high carrying capacity on irrigated land. Creeping bent grass for low land with some sub-irrigation and Reed's ordinary grass for marshy land suit best to some surface water also providing pasture plants at the station.

The time for culling the poultry flock is at hand, says the Oregon experiment station. Poor layers will stop laying in July and August, and it is advisable to remove them from the flock and market them.

Close adherence to grades and standards in marketing vegetables establishes a reliability of dealing

between grower and buyer, says the Oregon experiment station. Uniformity of pack and grade of a certain commodity as put up by the grower establishes confidence in him by the buyer, and the buyer can pass this confidence on to the retailer, and finally on to the consumer.

A moist mash fed to the poultry flock at noon during warm weather will stimulate the fowls' appetites and assist in maintaining production, says the Oregon experiment station.

From a state-wide three-year survey study of the costs and profits from producing farm crops in Oregon, the experiment station finds that the average cost of production for corn stalks, with an average yield of 3.7 tons per acre was \$7.40 per ton for vetch silage, with a yield of 7.8 per acre, \$4.27 per ton and for kale with a yield of 15.1 tons per acre, \$2.75 per ton.

As the chief factor affecting the cost per horse-hour on Oregon farms is the number of hours the horse is worked during the year, the cost can be most easily reduced by increasing the number of hours of work per horse. Hires

# Jackson County Fair

## SEPTEMBER 11-12-13-14

### Running and Harness Races

RODEO EVERY DAY

TRICK RIDING

ROPING—RELAY RACES

and

ROMAN RACES

### Band Concerts

FIREWORKS

EVERY NIGHT

Something Doing Every Minute

A Great Gala Week for Southern Oregon and Northern California People

\$10,000 IN PREMIUMS

Our Livestock, Poultry, Horticultural, Agricultural and Dairy Products, Needle and Art Work, Products of Kitchen and Pantry, School Exhibits

PLENTY OF ROOM FOR ALL DISPLAYS!

All resources, all industries, all energies of Jackson County have been brought together with one effort to make this fair bigger and better than any county fair ever held in the state. Every phase of agriculture—stock-raising, fruit, vegetable and grain farming, dairying, poultry raising, products of kitchen and pantry, boys' club work—has been called upon to aid in the various exhibitions. Every department will be crammed full of the splendid products of Oregon.

## ONE OF THE FINEST DISTRICT FAIRS IN THE WEST!