

NEW OFFICIAL OF RICHFIELD OIL CO.

Bradford M. Melvin, prominent San Francisco attorney, has been elected vice president, secretary and general counsel of the Richfield Oil company of California, according to an announcement by James A. Talbot, chairman of the board.

Mr. Melvin has been senior member of the law firm of Melvin and Sullivan of San Francisco. Admitted to the bar upon his resignation from the United States navy at the close of the World war, Mr. Melvin has achieved phenomenal success in his profession and has been looked upon as one of San Francisco's outstanding attorneys, especially in the field of corporation law. He was formerly assistant city attorney of San Francisco and was attorney for the Pacific department of the General Electric company, and the Fidelity and Deposit company of Maryland.

Mr. Melvin was born in Oakland in 1894 and is the son of the late Judge Henry A. Melvin, who was associate justice of the supreme court of California and one of the west's noted jurists. He was educated in the Oakland public schools, Boon's University School, Berkeley and attended Stanford University, the University of Southern California Law school and the University of California.

UNRUH FARM HOME IS NOW DEDICATED

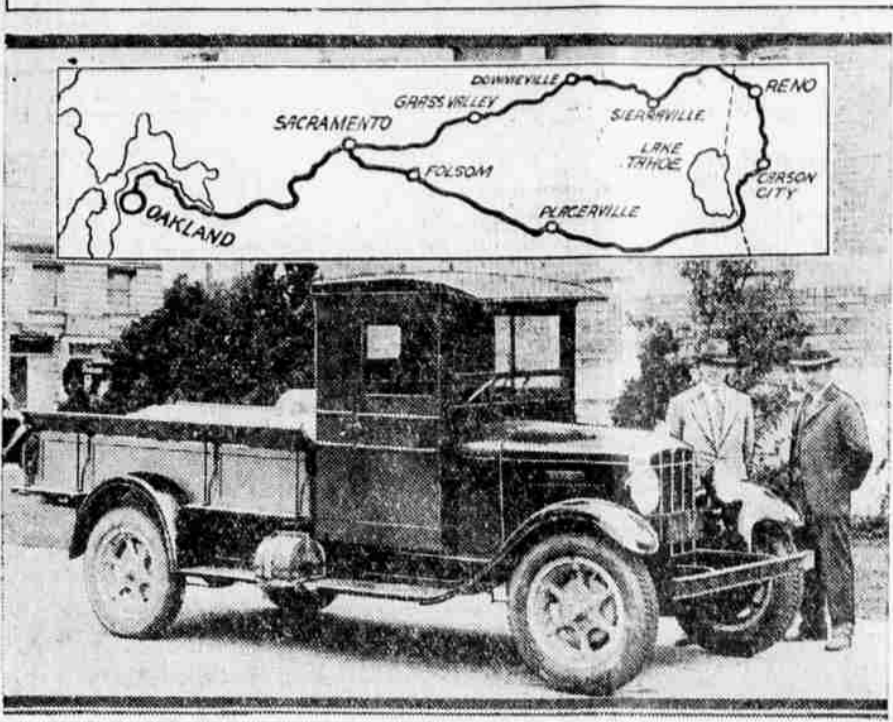
On Sunday, July 14th, a large number of people gathered at the Children's Farm Home, from various parts of the state to participate in the dedication of the cottage named in honor of Mrs. Ada Wallace Unruh. The cottage was built at a cost of about \$15,000 exclusive of furnishings, many of which were contributed as memorials. The living room was furnished in memory of Mrs. Emma Faith Grigsby by the daughters; fireplace equipped in memory of Mrs. Charlotte Alderman by her children; dining room furnished by First Baptist church of Portland; library by Woodstock W. C. T. U.

and Mrs. Unruh and books furnished by the Portland Lion's club and other friends. Matron's room and linen for dining room by the Portland Woman's Research club; guest room by Sutherland W. C. T. U.; wards, No. 1, Yamhill county W. C. T. U. in memory of Mrs. Lottie Hannan; No. 2, Independence W. C. T. U.; No. 3, Mr. and Mrs. Howard Pea, in memory of Edna Pea Heym, and No. 4, in memory of Mrs. Mary D. Russell. Large picture of Mt. Hood, painted by G. M. Weister and donated by Mrs. Alice Weister. Other pictures by Mrs. C. H. Vaughn; pillows by Albina W. C. T. U.; sewing machine by Mattie Sleeth W. C. T. U. honoring Mrs. Elizabeth Kirkpatrick, and large front window donated by De Young and Road.

The dedication services were held in the auditorium of the school building, with Judge Walter Evans, president of board of trustees, presiding. The Farm Home chorus of ten boys and ten girls sang the opening number delightfully. Prayer by Mrs. Ada Jolley, state president W. C. T. U. The principal address was given by Judge G. P. Croshaw, chief justice of the Oregon supreme court. O. S. Tate, of the Lion's club, presented the books and stated that at the recent convention of the state Lion's club at Tillamook it was voted to provide radios for each cottage. The final address was made by Mrs. Ada W. Unruh and she and Judge Evans expressed the gratitude of the board for the gifts from people and organizations that had made the Children's Farm Home possible. Mrs. Elizabeth Saunders sang "The Sea of Memory" in honor of her mother, Mrs. Grigsby. The song was written by another daughter, Mrs. June Grimes, both coming from Klamath Falls for the dedication and to present the beautiful living room furniture. Supt. Heyman was introduced and expressed the hope that those present would take the fine efforts of the children for progress and development as an evidence of their appreciation of what is being done for them.

The visitors enjoyed going over the 240 acre farm and seeing the fine vegetable gardens, dairy and chickens and visiting the cottages and generous approval was given for the neat and efficient way the work is managed. The affection of the children for each other and for the house mothers and the real pride each one had in their home was also noted.

TESTED AND PROVED



Before the new Durant trucks were offered to truck buyers and operators the models were given severe tests on the public highways of the west. The photo shows the largest of the Durant commercial line—the Model "X"—following one trial run over the route designated above. Conducting the tests were George R. Scott, vice-president, left, and F. W. Yrooman, chief engineer, of the Durant Motor Company of California.

NEW LABORATORY OF GRAHAM-PAIGE MOTOR

What would you think, if you stepped up to a seemingly motionless electric fan to inspect a printed slip pasted to one of its blades, only to have your hat blown off while you read: "This fan is making 2750 revolutions per minute." This is one of the surprises arranged for a few guests invited to inspect the new engineering laboratory building of the Graham-Paige Motors corporation. The illusion of motionlessness in the rapidly whirling fan is produced by the stroboscopy, a marvelous device that enables the engineers to analyze high speed mechanical motion, and to learn exactly how various units and parts behave at different speeds.

The new Graham-Paige laboratory is one of the most completely equipped research buildings in the automotive industry. In conjunction with the company's new final test building and concrete track for road tests, the new laboratory completes the Graham-Paige facilities for research work in the designing and developing of motor cars, and for the incipient trial of every car before it is shipped from the factory.

Four dynamometer rooms are constantly in use making tests after test to insure the utmost efficiency of Graham-Paige engines. A special water brake dynamometer is used for long continued tests. Then there is a cold room, in which an entire car can be tested at temperatures as low as

29 degrees below zero. A heat room permits a car to be operated under desert conditions at temperatures as high as 140 degrees. In the silent room, completely insulated from all outside noises, entire cars or separate units can be tested for noiselessness. Other machines subject chassis and bodies to shake tests, simulating high speed driving over rough roads.

The stroboscopy, mentioned in the foregoing, is perhaps the most spectacular exhibit of all. This device is of French manufacture. By means of a cluster of neon tubes of 1000 candle-power, the stroboscopy illuminates an entire chassis, engine, or any unit, with a light timed to flash in synchronism with the rate of motion of the part under study.

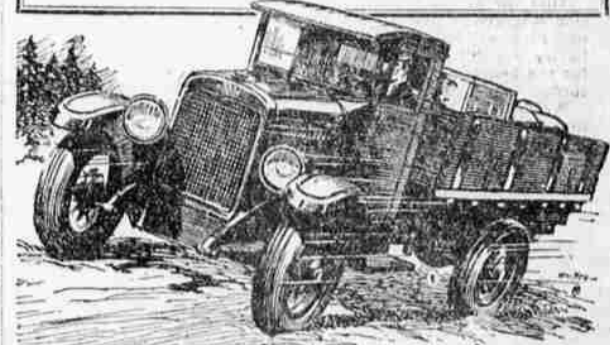
Its effect, though mysterious at first, is readily understandable. If a man were in a dark room, with an instantaneous flash of light illuminating his watch every 60 seconds, the second hand of the watch would seem to be motionless, because he would see it always in the same position. If the light flashed every 41 seconds, the second hand of the watch would seem to advance only one second in each minute. With the electric fan running at 2750 r. p. m., the light is adjusted to flash 2750 times a minute. Consequently, each blade is seen in exactly the same position at each flash, so that the fan seems to stand still. By speeding up or slowing down the stroboscopy flashes, the apparent speed of the fan can be regulated so that its action can be studied in slow-motion movies. This is of the greatest value in analyzing the motion of mechanical units at high speeds. For instance, it solves the problem of determining whether valve springs are performing regularly and evenly, and whether the valve tappets are remaining in contact with the cam surfaces, at high motor speeds.

NORTHEAST GALE LASHES MICHIGAN

CHICAGO, Ill., July 19.—(AP)—A furious nor'easter lashed Lake Michigan yesterday and early today, causing thousands of dollars' loss in lakelakefront damage. Fifteen-foot waves battered lakelakefront apartment buildings, tore craft from moorings and swept over streets, beaches and parks.

Mariners described the storm as their worst in 20 years. Excursion from the tumbling waters. Most of them steamers and freighters sought docked an hour or more late.

YOU Ought to See this Truck CLIMB HILLS!



The New INTERNATIONAL "SIX-SPEED SPECIAL"

FEATURES of the SIX-SPEED SPECIAL
 6 Speeds Forward, 2 Reverse
 4-Wheel brakes.
 Simple, powerful engine.
 Comfortable, enclosed cab.
 Pressed-steel frame.
 New convertible grain-box and stack rack body.
 Commercial bodies available.
 Heavy-duty, alloy-steel springs.

WE ARE GLAD to offer this new, heavy-duty speed truck to you because it is the only 1-ton truck built from end to end for the conditions such as you often meet around here. This truck will pull a capacity load up a 33 per cent grade, across plowed ground, through sand, across ditches and then show its heels at a fast clip on the highway. That's because of its 2-speed axle. It has 6 forward speeds. Just tell us when it will be convenient and we will back this up with a truck demonstration such as you've never seen before.

ELWOOD'S AUTO SHOP
 118 So. Central Avenue
 Medford, Ore. Phone 769

VACATION LAND

Vacation time is here! Be sure that you get the utmost pleasure out of it by being ready. There are certain things you should have and certain provisions to make, and for your convenience a number of shops are specializing on vacation things. Use this page for reference while getting up your vacation outfit. Then you can count on a rollicking good time!

THESE MERCHANTS LISTED BELOW WILL HELP YOU SOLVE YOUR VACATION NEEDS

Swim at the Nat
 Where the water is chemically treated and pure.

The state authorities give the Nat a class "A" certificate, which means "absolutely safe."

The ONLY gas chlorinated pool in So. Oregon.

Life Guards and Instructors

Merrick's Nat

It Pays to Start with a Good Battery

When you start on the vacation rip, it certainly DOES NOT PAY to take chances with starting and lighting troubles.

The Willard Battery

is world-famous for dependability. We are authorized representatives in Medford for the WILLARD—absolutely guaranteed and never a make-over or used battery substitutes.

MOTOR ELECTRIC CO.
 Successor to Medford Battery and Electric Co.
 South Bartlett Phone 22

H. L. Boucock, Expert Battery Electrician, in charge
 Better have us give your Battery Equipment an inspection

Bobby's Sandwich Shop

Real Coffee
 Quick Service

On Pacific Highway in The "Great Country"

YOU'LL BE GLAD WHEN YOU TRY OUR SPECIALS

J. C. BURNS, Prop.

What about that Battery...

We can furnish you with a battery at \$1.50 and up to \$8.50—service corresponding to price.

Batteries Recharged **50c**

We Sell **MULTNOMAH BATTERIES**

SEVERIN Battery Service

Box 619
 1522 N. Riverside
 Medford

Relief from the Heat

Hit the water for a nice cool swim. That's the best cool-off prescription for these hot days.

Pure Tested Sulphur Water
 HEALTHFUL, INVIGORATING

Cigars, Soft Drinks, Ice Cream, Confections

Cabins, Shade
Dancing, Camping

Jackson Hot Springs
 J. C. OTTINGER, Proprietor

30 Modern Cabins

Equipped with gas, running water and other conveniences, located on Pacific Highway at Jackson

One of Oregon's Best Camp Grounds

Personal Owner-Supervision

We Make It Like Home for Tourists

Service Station and Tire Repairing

QUALITY and SERVICE

Are both guaranteed at this Cafeteria

Big Double Room
 Courteous Treatment
 Best of Refrigeration
 Home cooking flavor in every dish.

HALL'S CAFETERIA
 17-19 S. Riverside—on Pacific Highway
 PHILA H. HALL, Prop.

GOOD BRAKES FOR SAFE TOURING

Faulty brakes are the cause of 85 per cent of the accidents on the highways. What will have you if you run into someone when your brakes won't work?

HAVE US EXAMINE THEM REGULARLY

We are experts in this line.

MACK'S GARAGE
 BRAKE & WHEEL ALIGNING SERVICE
 129 N. RIVERSIDE
 PHONE 1369

On Pacific Highway

Tourists from all over the world find

Riverside Apartments Ideal

Owing to their location on the Pacific Highway, their modern comforts and reasonable rates.

30 Apartments

217 S. Riverside
 C. E. Soderstrom, prop.

Good Food and Good Service

These two go hand in hand here at our cafe. The public is offered the best of food at reasonable prices with quick service. All the food that comes from our clean kitchen has been prepared by the hands of experts, when it comes to cooking. That is why our meals taste like those you get at home. It is our quick service that puts this good food before you.

For a Better and Quicker Meal Try Us

CLUB CAFE
 JIMMY VALENTINE
 On Pacific Highway near Main

WALDEN BROTHERS

Have a complete line of Groceries, Fruits, Vegetables for the tourist as well as home folks

Soft Drinks of All Kinds
 An Ideal Place to Get Real Homelike service

In the Berrydale District

PHIPPS AUTO PARK SERVICE

Medford's Ideal Auto Camp

Riverside at Jackson
 Albert Shaw, Prop.

Skinner's Garage

See us when you need your car overhauled or anything goes wrong with the car.

WE EMPLOY NOTHING BUT SKILLED MECHANICS EXIDE BATTERIES

South Riverside Phone 102

Walden Brothers

Have a complete line of Groceries, Fruits, Vegetables for the tourist as well as home folks

Soft Drinks of All Kinds
 An Ideal Place to Get Real Homelike service

In the Berrydale District

Walden Brothers

Have a complete line of Groceries, Fruits, Vegetables for the tourist as well as home folks

Soft Drinks of All Kinds
 An Ideal Place to Get Real Homelike service

In the Berrydale District

Walden Brothers

Have a complete line of Groceries, Fruits, Vegetables for the tourist as well as home folks

Soft Drinks of All Kinds
 An Ideal Place to Get Real Homelike service

In the Berrydale District

Walden Brothers

Have a complete line of Groceries, Fruits, Vegetables for the tourist as well as home folks

Soft Drinks of All Kinds
 An Ideal Place to Get Real Homelike service

In the Berrydale District

Walden Brothers

Have a complete line of Groceries, Fruits, Vegetables for the tourist as well as home folks

Soft Drinks of All Kinds
 An Ideal Place to Get Real Homelike service

In the Berrydale District