

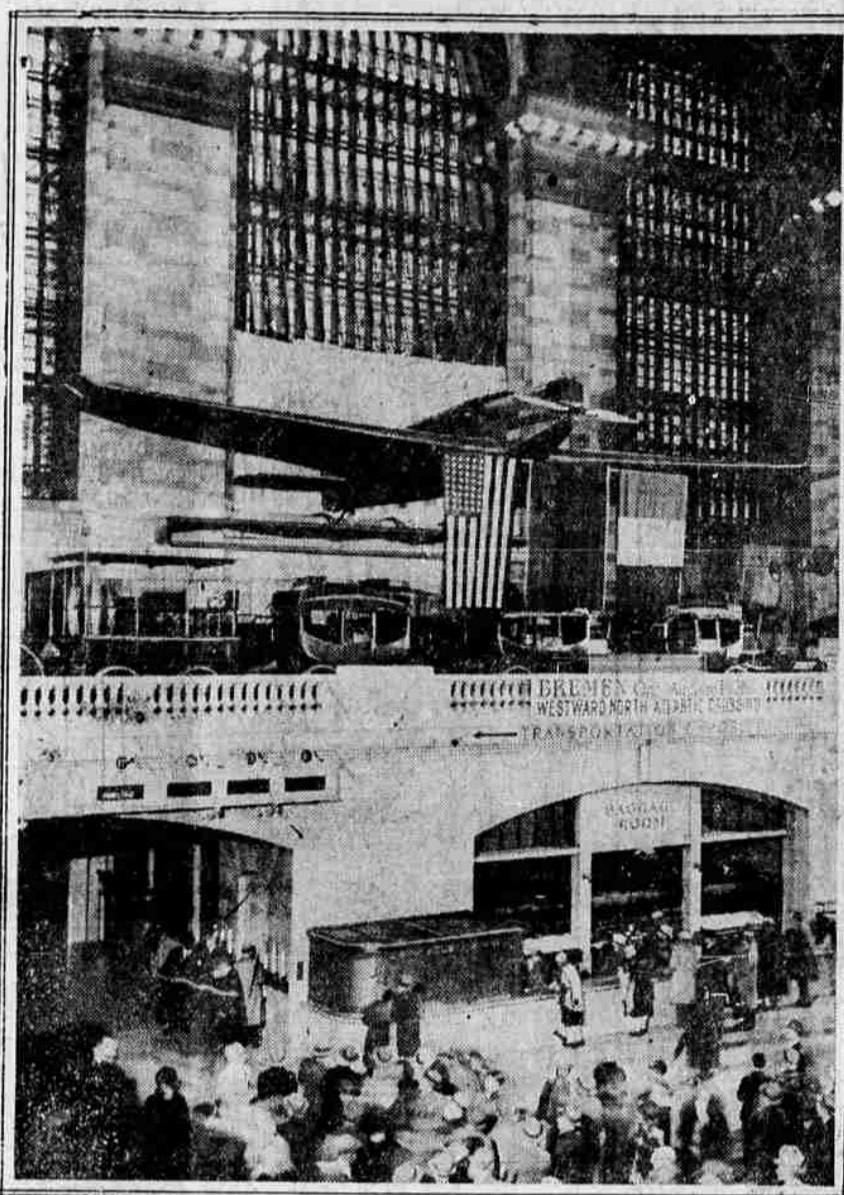
NEWS of the DAY in PICTURES



(C.) Bachrach
SHAGGY AND PICTURESQUE in his Arctic furs, here is Commander Donald B. MacMillan, who recently departed with an expedition for Baffinland and Newfoundland. With a party of Chicago scientists, MacMillan is spending the summer in the north.



IF THERE ARE NO orchards on the beaches, then where do all the peaches come from? In other words, the bathing beauty season is here. Above is Miss Jeanne Lott, chosen as "Miss Houston" for 1929. She was chosen from among 50 girls to represent the Texas city in the International Pageant of Pulchritude at Galveston, June 8 to 12. Miss Houston is a recent high school graduate.



THE FAMOUS AIRPLANE BREMEN AS IT HANGS over the equally famous DeWitt Clinton train in the Grand Central Station, New York City, is pictured above. It has been presented to New York City and will be placed in New York Museum when the building is completed.



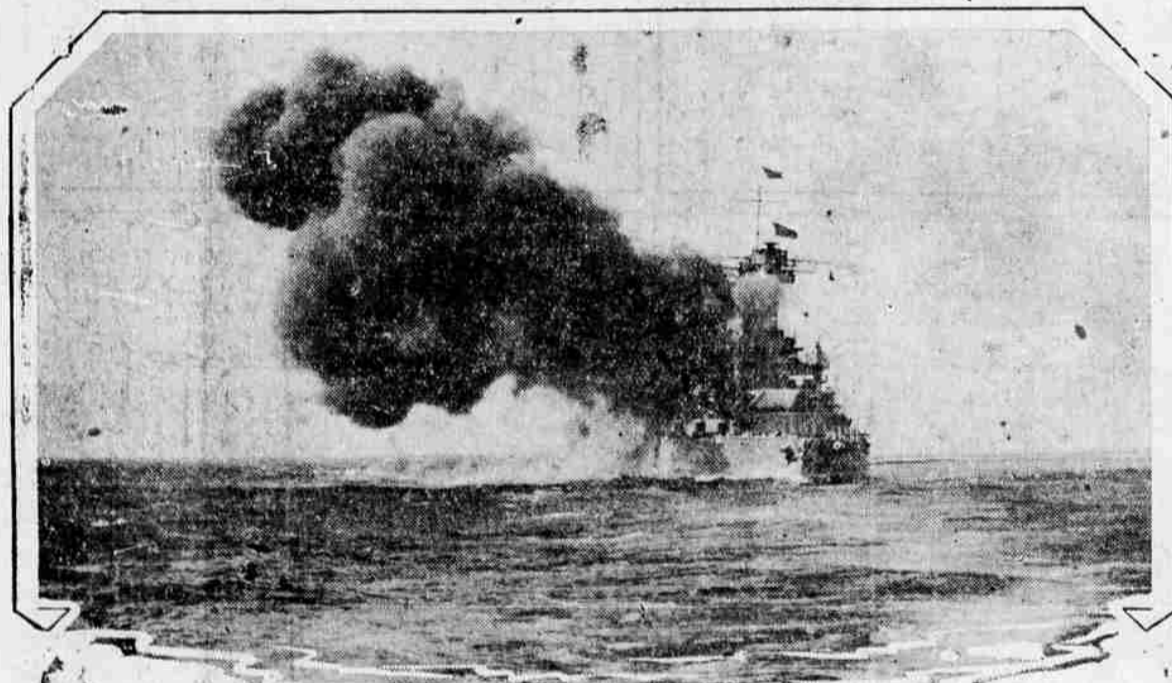
ONE OF THE BUSIEST GIRLS in Hollywood is Miss Carole Lombard. Often she finds herself working in three or four pictures at the same time, the demand for beautiful girls exceeding the supply, even in Hollywood.



LONDON POLICE HORSES ARE TAUGHT how to handle the crowds by practicing with these dummies. A group of new horses is shown being broken in to the work.



MISS JOHNE CLARE, English musical comedy star, has come over to enter the talkies. She is shown here shortly after her arrival on the Aquitania.



THE VOICE OF AUTHORITY SPEAKS from one of Uncle Sam's big battleships, the U. S. S. Maryland. The great ship was firing a broadside at a target 12 miles away when this picture was taken during Pacific Battle Fleet maneuvers off Los Angeles harbor.



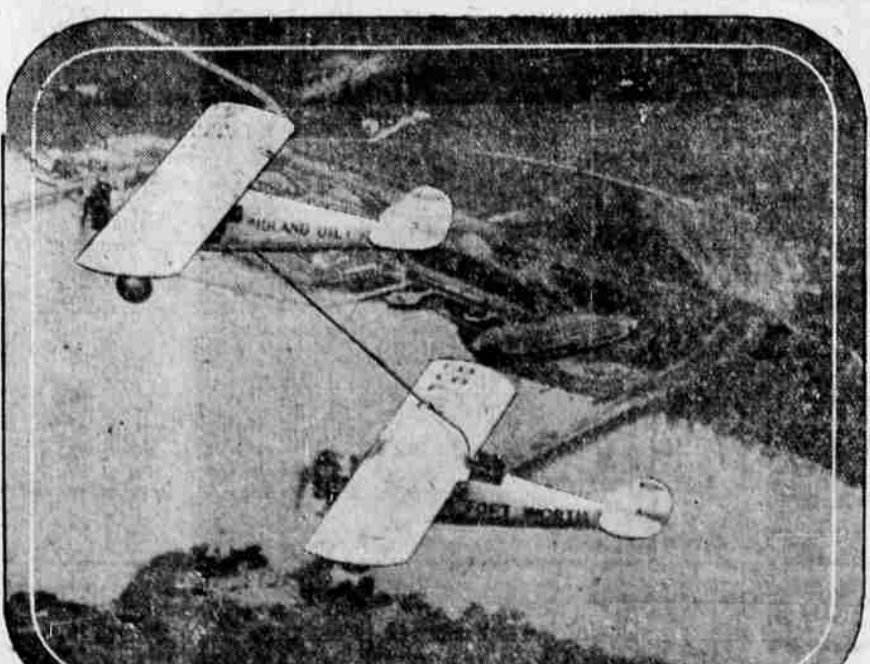
OWNS-DIFFERENT-HORSES is this Indian's name, and it fits. For Owns-Different-Horses has a large herd of ponies in Watertown Lake National Park Reservation in the Canadian Rockies.



DESPITE STRONG WINDS and the task of finding a living on a rock, picturesque cypress trees like the one shown here line the coast of Monterey Bay, California. The winds have twisted them into grotesque shapes.



THIS CURIOUS STATUE, representing the legendary king, "Solke Filbyter," a fabled personage, recently was placed at the entrance of the Swedish Art Exhibition in Paris. It is a replica of a statue in Stockholm.



A PERILOUS AND DELICATE TASK is the refueling of a plane in motion, as shown above. The refueling plane is sending down gasoline through the line to the Fort Worth, during its recent flight in which it established a new endurance record of 172 1/2 hours in the air.



RIDICULOUSLY POMPOUS are these penguins which were received recently at the Philadelphia Zoo. Commander Byrd is expected to bring some of a larger variety for the zoo on his return.