

# SIMP O'DILL



LOOKS LIKE A MOUSEY TRAP



THAT CHEESE LOOKS SO HARD AND STALE I'LL BET THE MOUSEY CANT BITE IT.



YOU'D NEVER CATCH A MOUSEY WITH OLD DRY CHEESE LIKE THAT



I'LL BET IT'S DRY AND AS HARD AS A ROCK - I'LL FEEL IT AND SEE -



SNAP

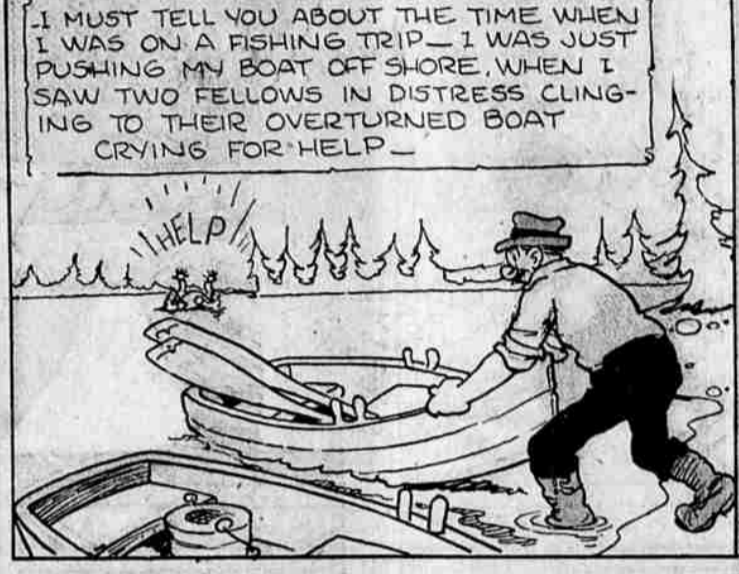
## THE NEBB'S

## Rudy Tells A Whale Of A Story

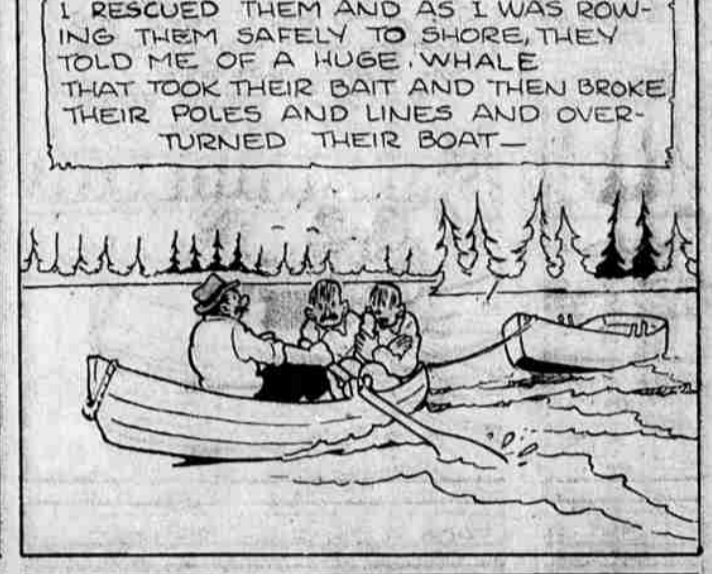
## By SOL HESS



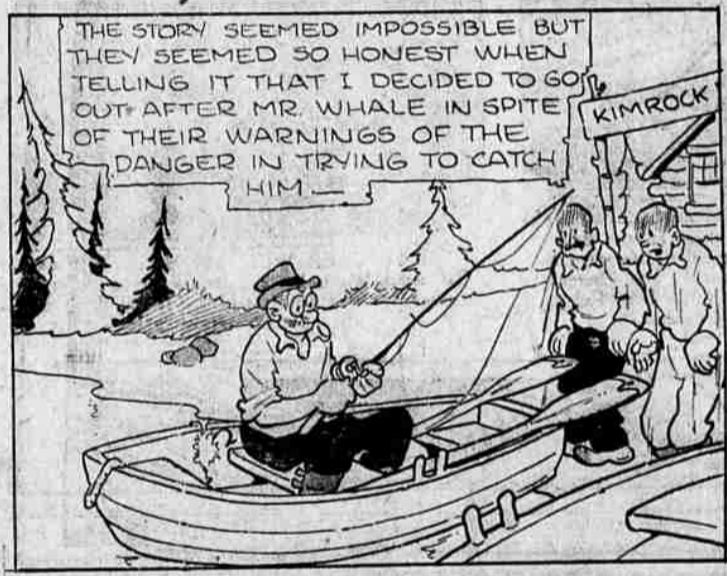
WELL, THERE OUGHT TO BE SOME FISH HERE - THIS LOOKS LIKE IT MIGHT BE THE CAMPUS OF A FISH COLLEGE - I ALWAYS COULD CATCH FISH - I'VE BEEN OUT WITH GOOD FISHERMEN WHO NEVER GOT A BITE BUT I GET 'EM EVERY TIME.



I MUST TELL YOU ABOUT THE TIME WHEN I WAS ON A FISHING TRIP - I WAS JUST PUSHING MY BOAT OFF SHORE, WHEN I SAW TWO FELLOWS IN DISTRESS CLINGING TO THEIR OVERTURNED BOAT CRYING FOR HELP -



I RESCUED THEM AND AS I WAS ROWING THEM SAFELY TO SHORE, THEY TOLD ME OF A HUGE WHALE THAT TOOK THEIR BAIT AND THEN BROKE THEIR POLES AND LINES AND OVERTURNED THEIR BOAT -



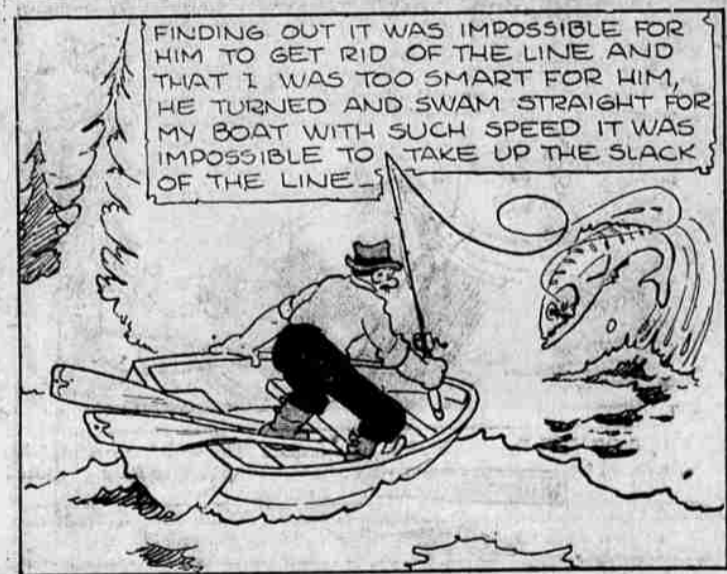
THE STORY SEEMED IMPOSSIBLE BUT THEY SEEMED SO HONEST WHEN TELLING IT THAT I DECIDED TO GO OUT AFTER MR. WHALE IN SPITE OF THEIR WARNINGS OF THE DANGER IN TRYING TO CATCH HIM -



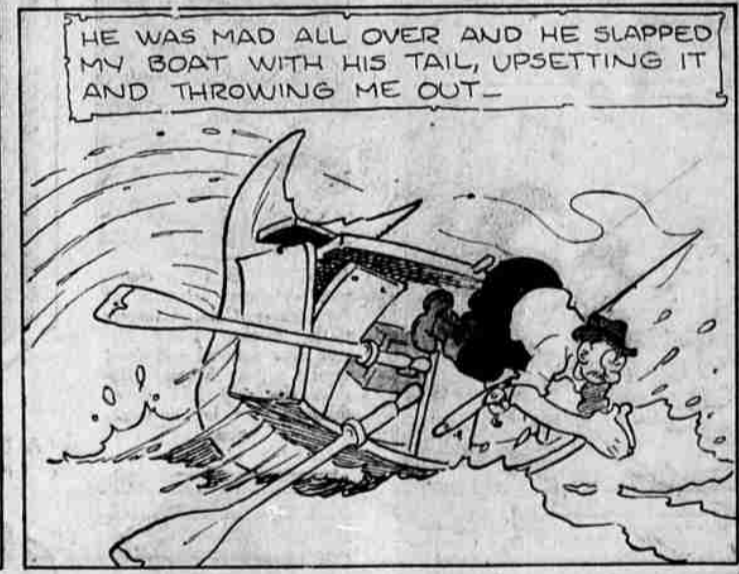
I KNEW THE KIND OF BAIT THAT WOULD TEMPT HIM AND SURE ENOUGH HE GRABBED THE FIRST CAST WITH A JERK THAT NEARLY PULLED ME FROM THE BOAT -



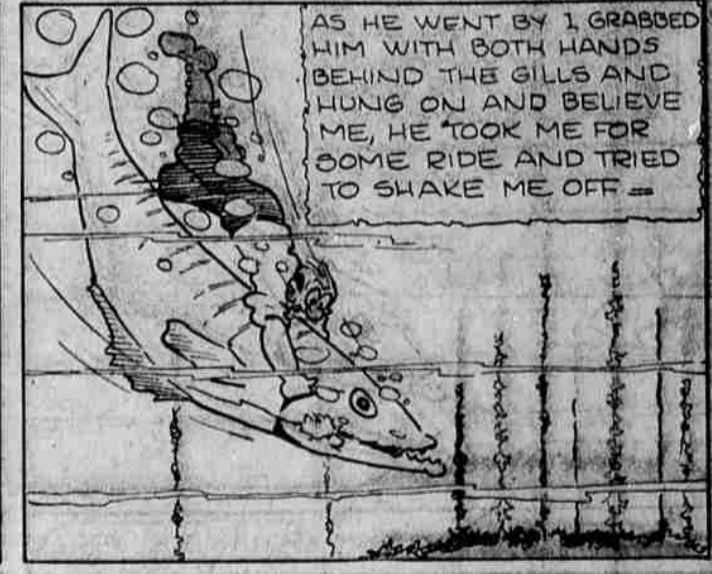
THEN HE GAVE ME A BOAT RIDE, THE LIKE OF WHICH I NEVER HAD BEFORE - HE CHURNED UP THE OLD LAKE LIKE A HURRICANE -



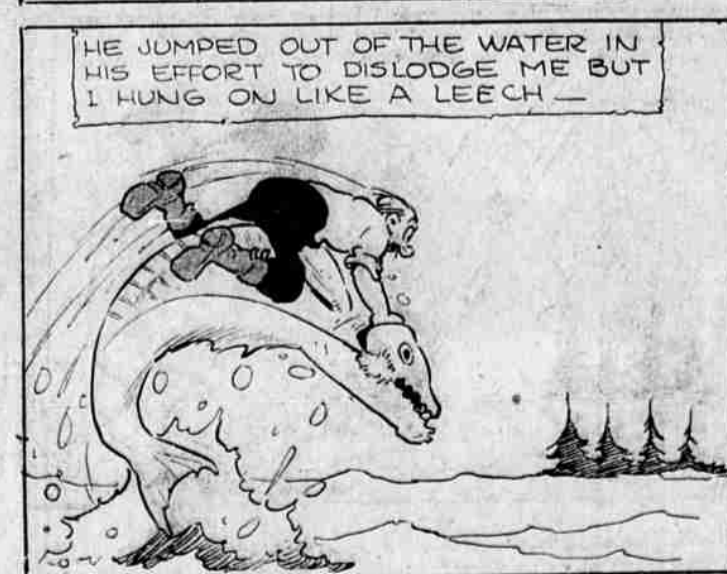
FINDING OUT IT WAS IMPOSSIBLE FOR HIM TO GET RID OF THE LINE AND THAT I WAS TOO SMART FOR HIM, HE TURNED AND SWAM STRAIGHT FOR MY BOAT WITH SUCH SPEED IT WAS IMPOSSIBLE TO TAKE UP THE SLACK OF THE LINE -



HE WAS MAD ALL OVER AND HE SLAPPED MY BOAT WITH HIS TAIL, UPSETTING IT AND THROWING ME OUT -



AS HE WENT BY I GRABBED HIM WITH BOTH HANDS BEHIND THE GILLS AND HUNG ON AND BELIEVE ME, HE TOOK ME FOR SOME RIDE AND TRIED TO SHAKE ME OFF -



HE JUMPED OUT OF THE WATER IN HIS EFFORT TO DISLodge ME BUT I HUNG ON LIKE A LEECH -



HE FINALLY BECAME SO EXHAUSTED WITH HIS EFFORTS TO THROW ME OFF THAT I TOWED HIM TO SHORE - CUT HIM UP IN SECTIONS AND SHIPPED HIM BACK TO MY FRIENDS AT HOME TO PROVE TO THEM THE SIZE OF THIS MONSTER.



LOOK OUT JUNIOR, I'VE GOT A BITE AND HE'S A BIG ONE - I TOLD YOU I ALWAYS GET BIG - ?? WHAT THA?

THROW IT IN AGAIN, PAL, MAYBE YOU'LL GET THE AUTOMOBILE

