

# ALIENS QUICK TO ADOPT AMERICAN CRIMINAL WAYS

By Howard W. Blakeslee  
(Associated Press Science Editor)  
PITTSBURGH, Pa.—(AP)—Evidence that foreign born law-breakers become Americanized in their crime habits is found by Dr. G. L. Gardini in a study of several hundred inmates of the Western State penitentiary of Pennsylvania.

Dr. Gardini is psychologist for the penitentiary.

The American white criminal, he says, tends toward crimes of degradation, rather than of violence. Among crimes of degradation he lists larceny, burglary, robbery and embezzlement. Violence includes crimes against the person, such as killings.

His comparison is based on several hundred native born whites, and Italians, most of the latter foreign born.

"In general," he says, "the Italian tends to commit the same kind of crime as the native white in the degree in which he has been exposed to American environment, and according to the age at which exposure began."

"The comparison tends to show that the rise in crimes of degradation is associated positively with the degree of Americanization, while the frequency of crimes of violence falls with the increase in de-Americanization."

He learns that Italians born here are even more like native whites. He notices an attitude of "nonchalance and sophistication in place of native earnestness and anxiety."

With Americanization, the foreign born law-breakers become "more worldly wise and less given to revenge than their foreign born brothers."

Mr. Gardini observes that the tests are proof that there can be Americanization along useful lines. He finds that education in the penitentiary in the three R's increases intelligence of criminals, but that vocational training is of greater importance for the social readjustment of adult criminals.

He believes that training in proper habits should start within the penitentiary and that most important of all be to follow this training with supervision of parole prisoners to insure that the desirable habits continue.

The effect of the extent and quality of education is brought out more clearly in the study of a group of negro prisoners by the Binet-Simon tests.

"We found," says Dr. Gardini, "that the states with the poorest educational systems produced negroes of lower intelligence than the states with better educational systems."

"As to crime, the negro seems to have no preference. He commits crimes of degradation and crimes of violence with about equal frequency."

# PETTINGILL SAYS VEEDOL POPULAR HAWAIIAN ISLANDS

Returning with optimistic views regarding Hawaii as a field for Veedol oil sales, W. C. Pettingill, western regional director for the Tide Water Oil Sales corporation, refiners of Veedol motor oils, arrived in San Francisco recently. He believes that everything indicates another year of prosperity and increasing sales for Veedol.

While in the islands, Pettingill arranged for sales promotion and advertising support for island dealers that will be comparable to the sales campaigns used by the Tide Water Sales corporation in the eastern United States. A week was spent in conferring with heads of the Associated Oil company there, which organization was appointed as dealer for Veedol in Hawaii.

"An increase in sales volume of Veedol motor oils and greases in the western region during the last 12 months shows the growing appreciation on the part of the public of the superior lubricating qualities of these paraffine base oils, and is an encouraging indication of this even greater year that is ahead for the company now that the dealer organization has been broadened," said Pettingill.

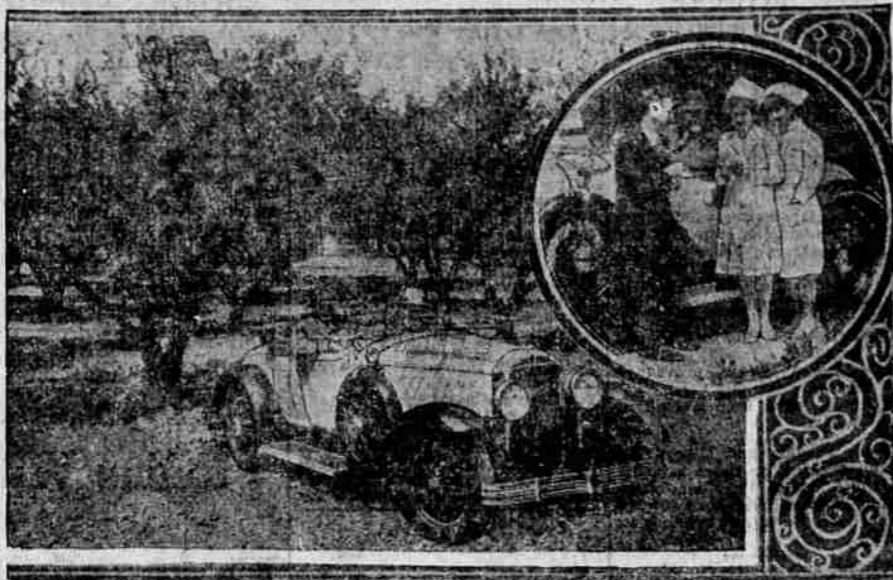
"Veedol officials everywhere report an increasing demand for their oils and greases, and field men report that an increasing number of motorists are finding in Veedol an answer to their needs and an assurance of positive lubrication with marked economy."

Frank Wagar, advertising manager of the western region for the company, was at the stock to greet Pettingill on his return, and to receive from him chief the latest news relative to the advertising plans in the island territory.

Farmers Buy Machines Jointly with their neighbors profitably with their neighbors in more ways than the mere marketing of their products. For example, the increasing use of farm machinery makes necessary larger investments than ever before, but they can be cut to small fractions if three or four neighbors purchase some of the more expensive pieces, such as binders, jointly, cutting the maintenance expense as well as the purchase price. With pieces that are used but a few days each year, but are nevertheless essential, this plan is being practiced successfully in several instances.

Mail Tribune ads are read by 20,000 people every day.

# Old Reliable Prune Fills New Role



Prospects of a record-breaking Coast prune crop this year, together with a concerted drive by hospitals and medical authorities to promote prune consumption as health aid, brings high optimism to orchardists this spring. Surveying the crop situation in a 1929 Buick sport roadster, these experts of the California Prune & Apricot Growers Association are discussing with nurses the recent adoption of prune dishes as a major diet in San Jose Hospital, situated in "prune capital" of California.

# The Yellow Yanste

WASHINGTON—(AP)—How long is the Yangtze, Asia's longest river? That inquiry may be answered by explorers attempting to find its source "somewhere in the highlands of Tibet."

Map makers now draw a wavy line from the central Tibetan mountains through several distant mountain ranges and plains of central China, to the Yellow sea just north of Shanghai.

According to their scale of miles, if its meandering were straightened out, the river would be long enough to bisect the United States with San Francisco bay as its western source and Cape Cod as the basin into which it would flow.

A few months ago, during the civil war in China, the Yangtze valley was the scene of fighting, and foreigners living in cities and towns in the river valley were more interested in its lower reaches than in the discovery of its source.

Its banks frequently have been the scene of turmoil since it was first opened up to foreign trade during the latter part of the last century. Shipping was constantly in danger of footers who piled their profession nearly unstrained until foreign powers maintained naval guards to protect their interests. The American naval flotilla is known as the "Yangtze patrol."

With all its unrest, however, the Yangtze is the life artery of China. With its myriad man made canals and its tributaries, it drains an area equal to one-fourth of the total area of the United States. The National Geographic society estimates that approximately 175,000,000 people, one and a half times the population of our 48 states, live in its basin. Nearly all are dependent upon water transportation for a living.

From its mouth to Hankow, 640 miles upstream, the Yangtze channel which at some places is 20 to 30 miles wide, is filled with an unending stream of ocean going vessels, river steamers, barges, junks and sampans.

Now and then travelers see a barge with all the comforts of home. Aboard the crew build houses in which their families live during the slow journey upstream. On these floating islands, children play and pigs and chickens wander about, while the women hang out their laundry and carry on their other domestic duties as if they were in some Chinese town.

Before the construction of the new steamer line through towering mountains could be negotiated only by native junks drawn by bands of coolie trappers. It took a week to make the trip that today requires only 48 hours.

# Crabbing About Car Lubrication

"It may seem that I've been crabbin' a lot lately about lubrication but I just had a job in here that makes me want to continue on the subject a little longer," says an expert mechanic.

"The owner came in protestin' that the car'd developed an awful wobble in the steering. Somethin' had come loose, all of a sudden he told me. He wanted it tightened up quickly, so he could be on his way. I stopped down, grabbed two spokes of the front wheels and pushed. They gave."

"The owner, lookin' on, offered the immediate solution as looseness in the wheel bearings. He was all wrong, of course. It was king pin and king pin bushin' wear, and the cause was lack of lubrication."

That's what it is! More thousands of cars than owners ever like to admit! Especially when, regardless of the type of chassis lubrication system used, the king pin fitting always is among the easiest to reach. Just inside the front wheel, it can be reached from the front of the car. There's no excuse for avoidin' or ignorin' it.

"For some reason or other motorists make a good job of forgettin' about this bushin', even those owners who are careful about other places that need regular attention. I guess maybe it's because they're all so used to gettin' good performance out of the steering gear generally that they just sort of take it for granted."

"The result of takin' such things for granted is bound to be a wobble that's dangerous. If it has developed it should be removed quickly by replacement of parts."

Classified advertising gets results.

# DODGE TRUCK SHIPMENTS SHOW 77 PER CENT GAIN

Registering a gain of 77 per cent in shipments of commercial cars and trucks for March compared to February, the truck division of Dodge Brothers is increasing production facilities to meet the record breaking demand from domestic and foreign markets.

says Mr. Eakin of the Eakin Motor company, local dealers. "In carrying out this production schedule, a record of seven months' standing was broken with the shipment of 331 trucks on March 30, exceeding any single day since August 22, 1928. The export of 1735 units set an all-time record for March shipments to foreign markets."

"The rapid construction of paved roads and wide highways and the manufacturing facilities to build trucks, particularly adapted to every line of business are awakening executives to the possibilities of motor transportation never dreamed of before. Operators of truck fleets are finding expansion profitable and necessary in a competitive market that demands economy, speed and dependability in transportation.

"Six-cylinder engines, four-wheel brakes and four-speed transmissions on the heavier types of Dodge trucks provide speed and safety necessary for the most economical distribution of merchandise. Whether it be on the country highways or congested city streets.

"The 51 types of trucks built by Dodge Brothers represent five capacities ranging from the light delivery trucks to the heavy duty three-ton trucks, and meet the requirements of 98 per cent of all transportation. Hundreds of different truck types can be furnished from these capacities by varying equipment, and enable the company to offer the most extensive truck line in the industry."

To keep out foreign noises, engineers are hard to muzzle the movie camera in filming scenes for the talkies.

# A Homelike Atmosphere

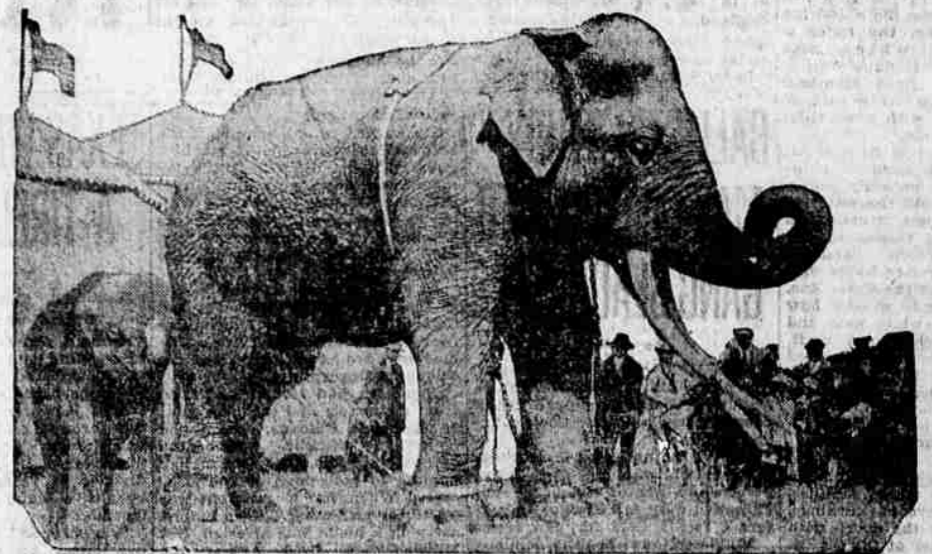
HERE is a genuine atmosphere of home at the Community. Graduate nurses, who serve patients here, make every effort to make you "feel at home" . . . to ease the usual "stressing time" of illness. Every step is taken to provide comfort and the best of care for patients. The cost of hospital service is surprisingly moderate, too, comparing very favorably with the charges at a first class hotel . . . the best of rooms are provided, graduate nurses are constantly "on the job," and the best of scientifically prepared foods are served.

# Community Hospital

# Circus Tickets Given to Boys and Girls

—BY THE—

# Mail-Tribune



# AL G. BARNES Gigantic 5-Ring Circus

—SHOWS AT—

# Medford, May 16

Every boy and girl under 16 years of age can go. Simply get one friend to subscribe; have the order below signed, collect the \$1.50, mail or bring the blank to this office, together with the \$1.50, and you will be given a \$1.25 ticket, admitting you to the Big Show (not reserved seat), the Side Show and the Wild West Show.

All orders must be verified by this office.

Hurry—Send Your Orders in at Once—  
Tickets Now Being Distributed

Have the Blank Below Signed and Bring or Mail to the Circulation Department of

# Medford Mail-Tribune

I WANT TO GO TO THE CIRCUS—YOUR SUBSCRIPTION WILL TAKE ME

**SUBSCRIPTION ORDER MAIL TRIBUNE**  
Two Months' Cash Contract

I have not been a subscriber to the Medford Mail-Tribune for the past thirty days, but hereby subscribe for a period of two months, for which I have paid the solicitor \$1.50.

Name \_\_\_\_\_ Date \_\_\_\_\_ 1929  
Street Address \_\_\_\_\_ City \_\_\_\_\_  
Order Taken by \_\_\_\_\_  
Street Address \_\_\_\_\_ City \_\_\_\_\_

NOTE: A new subscriber is one to whom the Mail-Tribune has not been taken for thirty days past. A change of name at the same address is not a new subscription. A renewal is not a new subscription. A ticket cannot be issued for a renewal.  
Remember—All subscriptions must be paid in advance for two months.

Take or mail this order, with the \$1.50, to the Circulation office promptly and get your ticket. Good for boys or girls under 16.

It's Easy . . . . . Get Busy

