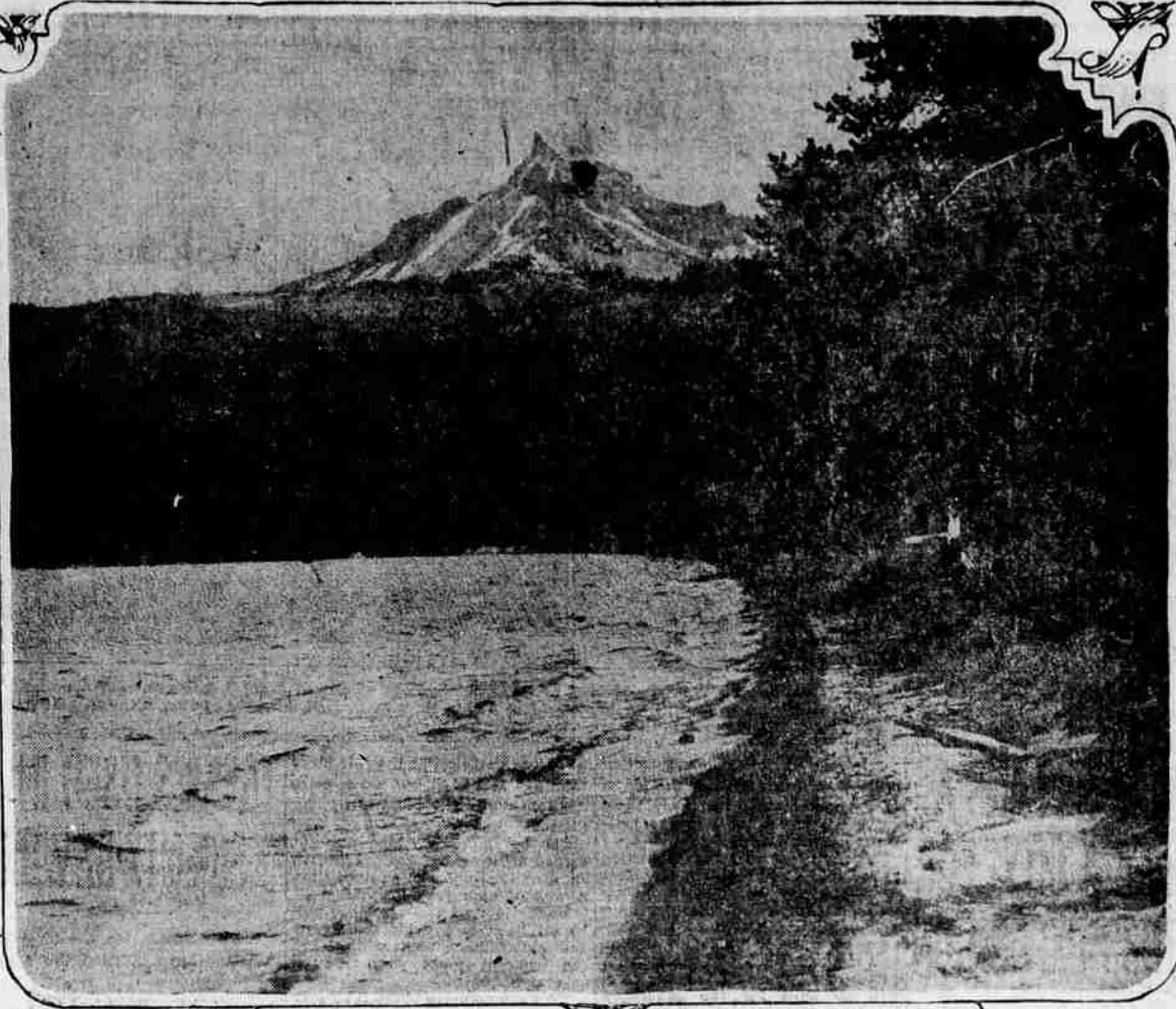


Diamond Lake, One of Southern Oregon's Vacation Spots



Mount Thielsen and Mount Hally stand guard on two sides of Diamond lake, "The Gem of the Cascades," a scenic southern Oregon resort located 88 miles from Medford and rivaling Crater lake in beauty. Sixty-two miles of the distance to the lake may be traveled over the excellent Crater Lake

highway, and there are three other roads leading to the place. Diamond lake is a favorite resort for fishermen who come from distant points to try their luck in its crystal clear waters. Here is the home of the Rainbow trout, which are bred and reared in the beautiful lake. The Oregon game commission maintains at Diamond lake the largest Rainbow fish

hatchery in the world. Thus other streams of the state are supplied with fry from its waters. And for those who wish to swim, dance, hike or merely lie under a friendly tree and watch the ever-changing lake, Diamond lake is an ideal place for one's summer vacation. Dozens of summer homes, hunting lodges and smaller cabins are

located on its banks and in the surrounding park-like forest. A modern store, boat house and attractive cabins are maintained for the convenience of tourists. Diamond lake increases in popularity each year as more and more people hear of its beauty and ideal facilities for furnishing all the things which go to make up a successful vacation.

HILLAH TEMPLE IS SMALLEST IN ALL SHRINEDOM

Hillah Temple of Ashland enjoys the distinction of being the smallest Shrine temple in the United States. There are, at the present time, approximately 610 nobles listed on Hillah's membership roll, including Shriners in practically all southern Oregon communities and members living in all parts of the world.

In contrast to Hillah's small membership is Medinah Temple in Chicago with 22,000 nobles. The Shrine order originated in this country in 1876 when the initial imperial council convened in New York City. In 1886 the Shrine branched out of New York City, establishing a temple in Cleveland, Ohio. The order is confined to North America, Honolulu and Alaska and has a membership of approximately 576,350 members. Hillah Temple was chartered on July 15th, 1908, and has, since its organization, been represented in several imperial councils and has established an enviable place among the Shrine temples of the United States.

MOROCCO TRIBES SORELY PERPLEX FRENCH MASTERS

COLOMB-BECHAR, Morocco.—(AP)—Rebellious tribesmen, by guerrilla warfare, still terrorize the vast region south of here despite years of military occupation by the French.

A dozen raiders often defy whole companies of troops, picking off a few men then fleeing to their hidden hill or desert homes. The soldiers control whatever territory they visit, but they merely make islands of peace in a sea of unrest.

Steady increase in the casualties caused Andre Maginot, minister of colonies, to visit the danger zone, so he might better discuss with the government in Paris the measures necessary to pacify this part of Africa. As it is now, even a military convoy is subject to attack. The bandits always are dis-

posed, or rather, they shoot and run, but leave death behind them. There were three such raids in 1926, nine in 1927 and 16 last year. The last of these, December 8, greatly humiliated the French and cost them something in prestige among Moroccans. General Clavery and four of his escort were ambushed and killed.

Rogue River Valley—The scenic paradise of the world.

We Extend A Cordial Greeting To Visiting Shriners

Rogue Valley Floral Co. Phone 1040

WELCOME SHRINERS

We hope that you will thoroughly enjoy your visit to Medford and the Rogue River Valley.

Burelson's POPULAR PRICE Ladies' Ready-to-Wear

WE EXTEND A Hearty Greeting TO VISITING SHRINERS

Lewis Super Service Station Largest in Southern Oregon Phil B. Lowd, Manager Eighth and Front Streets Phone 1300 WE NEVER CLOSE

REVIVE MINING NEAR MEDFORD

With the announcement made April 18 that the Blue Ledge copper mine, owned by the Guggenheim interests, has been transferred to a syndicate of Los Angeles investors headed by J. B. Roof and B. F. Miller, Jr., came the confirmation of the fact that mining activities in southern Oregon will before long be in full swing.

The deal was closed in New York City and the sum involved was stated as being "over half a million dollars."

It is estimated that between \$100,000,000 and \$150,000,000 have been taken from the placer gold fields of southern Oregon, since

their discovery in 1851.

Jacksonville, the oldest town in the county, was established in the early gold days and the mining industry did much toward attracting settlers to the Rogue River valley, and furnished a market for range and farm products. Very little deep mining has been done in Jackson county, and many rich mineral deposits await capital for development.

Large deposits of coal are among the mineral resources of Jackson county.

A number of varieties of excellent building stone are found in Jackson county. These include granite, marble and sandstone. Granite is being quarried near Ashland, and the product of a marble quarry which has been developed on the Applegate, both are extensively used for local work and for special shipments.

Medford is the county seat and metropolis of the Rogue River valley and gateway to Crater Lake.

AIR MAIL SIRENS AWAKE LAGGARD LETTER WRITERS

CHATTANOOGA, Tenn.—(AP)—An electric siren to notify air mail patrons of the arrival and departure of mail planes has been installed at the Hotel Patten here. Operated by wire through a telephone switchboard at the airport,

the siren is sounded here 15 minutes after the departure of the northbound plane from Atlanta, warning that there is yet time to post air mail at the post office and get it aboard.

The siren is blown again 20 minutes before the ship reaches here to signify that only that much time is left in which to dispatch mail to the plane by special messenger. The same signals are repeated for the southbound plane.

Airport officials say they hope soon to make it possible for the pilots of the air mail planes to sound the siren by radio. Similar instruments are being set up at Nashville, Tenn., and Evansville, Ind., other points on the Interstate Airlines, Inc., mail route.

WE ARE GLAD

of the privilege of welcoming the SHRINERS

to Medford and the Rogue River Valley

Economy Meat Market

Nichols & Ashpole

WELCOME SHRINERS

Rogue Valley Milling Co.

Dealers In

FLOUR and FEÉDS

Manufacturers of

Rogue Valley Cow Feed—Cheapest and Best On the Market—Try it and Be Convinced

327 South Fir St.

Phone 84

We Extend A Cordial Welcome

To Ben Ali's Representatives And All Visiting Shriners

Trader Brand Pears Ashland Brand Cherries Pears and Apples



High Class Brand Cherries Pride of Gold Hill Brand Pears and Apples

Myron E. Root

South Fir Street

Phone 294

SHRINERS

Medford, "The Pear City" and the Rogue River Valley welcome you!

SCOTT WOOLF

Complete House Furnishers

WELCOME SHRINERS!

We hope that you will enjoy your visit to—"A Great Country"

Peoples Electric Store

O. O. Alenderfer — A. B. Cunningham