

PARTLY COLORED SHOES WIN FAVOR EARLY THIS YEAR

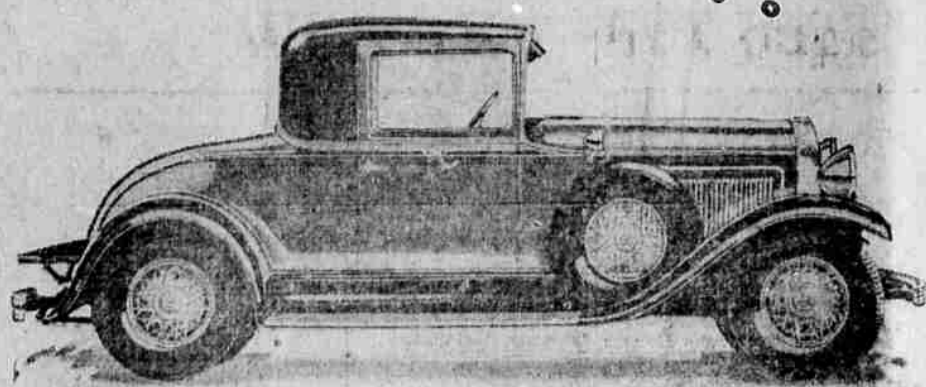
PARIS—Shoes of bright colors which match scarf and handbag are upon the market for summer. Many are meant for evening wear. Not only for sport, but for afternoon and evening costumes the footwear which combines two colors in design that are carried out in other accessories, is making a bid for popularity. One big dressmaking house is pushing the two colored shoe with handbag to match, for all it is worth, even to the point of constructing shoes and handbags with the shade of the gown itself. Much black and white for evening gives wide scope to the shoe designers in the matter of color and they are making the most of their chance to acceptation women to wearing shoes more brilliant than their costume. Probably the favorite two-color shoe is midnight blue and flag red combined with gold. Worn with a white costume, with diamond ornaments of star design and handbag or vanity case which carries out the coloring of the shoes, the red, white and blue ensemble is dazzling in effect. Jade green and melon pink frequently are used together, and two shades of yellow, with black also are much seen. The shoes of many colors usually are made with toe of one shade, heel of another and applied trimming bands of a third color.

CHRYSLER HIGHLAND PARK PLANT NOW USED BY DE SOTO

The entire passenger car manufacturing facilities of the Chrysler Motors plant in Highland park at Detroit has been taken over for exclusive production of the De Soto six, according to an announcement this week by company officials. The big Highland park plant is built on a site covering an area of more than 53 acres. One of the most complete manufacturing installations in the industry, it has been used in the past for building other Chrysler Motors products as well as the De Soto six. The million and three-quarter feet of floor space in Highland park has now been set aside for De Soto in anticipation of the heavy volume of sales predicted for the coming year by dealers and officials of the company. Approximately 1,500,000 feet is used exclusively for manufacturing. The remainder is devoted to offices. In the first five months of its existence De Soto reached a volume of production and distribution unparalleled by any other car during the same period in the entire history of the automobile industry. "It is the demand for the De Soto six which makes it compulsory for us to increase our production facilities," said L. G. Peed, general sales manager for De Soto, "and use this great plant solely for De Soto. Millions of dollars have been spent in factory expansion and our facilities throughout have been extended. Production has increased vastly, and still the demand more than keeps pace with our greatest efforts to produce cars. "With our raw material sources under proper control, we are building more and better cars at a reduced cost per car because of the scientific manufacturing economies practiced by De Soto. The Chrysler policy of passing on to the ultimate consumer the savings resulting from these economies in an established practice with this corporation. "The tremendous expansion of De Soto comes with the story of the phenomenal growth of the organization and the rapid rise of Chrysler Motors. In a few years Chrysler Motors has leaped forward to a place among the three greatest producers of motor cars in the world—in a few months De Soto has taken its place among the leaders in the industry."

The new Willys-Knight Six Coupe, a product of the Willys-Overland Company, promises to be one of the most popular models of this entirely new line of Knight engine cars. The lines are entirely different from former Willys-Knight designed from the larger radiator to the graceful curves of the rear quarters. This model should be especially popular as a town-car as well as a car for business use. This model also has the new "Finger-Tip Control," placing at the hands of the driver complete control of starting the motor, operating the lights and sounding the horn, without changing the driving position.

New Willys-Knight Coupe



The new Willys-Knight Six Coupe, a product of the Willys-Overland Company, promises to be one of the most popular models of this entirely new line of Knight engine cars. The lines are entirely different from former Willys-Knight designed from the larger radiator to the graceful curves of the rear quarters. This model should be especially popular as a town-car as well as a car for business use. This model also has the new "Finger-Tip Control," placing at the hands of the driver complete control of starting the motor, operating the lights and sounding the horn, without changing the driving position.

Farm Notes

All grain fed to the dairy cow should be ground, otherwise much of it will be undigested and wasted. The saving in grain will more than pay for the cost of grinding. Pasture land and woodland are most profitable when grazed separately, each for its own profit. Good pasture is not wasted when stock is kept out of the woods, for a well-stocked woodland has little or no grass, except in the southern hilly regions where good timber occurs in open stands. Honey in crystalline or granulated form is growing in favor with the consumer. This form of honey, in its cans, can be bought at a lower price than liquid honey in glass. Crystallized honey is hard or soft, depending on the temperature, and can be spread like butter. Growing chicks and laying hens need comfortable houses that are dry and rosy and have plenty of fresh air and sunlight. Young fruit trees loosened at the base by much weeping in the wind should be staked until they obtain sufficient "root-hold" to maintain themselves firmly. It may be advisable to drive a stake on either side, and tie the tree to them with a strip of burlap or some similar material that will not girdle the tree as it expands in growth. If the tree is loosened by a single severe windstorm, soil should be packed firmly in the opening around the base. One way to insure a uniform supply of milk throughout the year is to have a larger proportion of cows freshen in the fall and early winter. This stimulates production of milk when the price

Fear and the Bootlegger

Every citizen of the country, except the citizen of doubtful standing who finds particular reason for flouting the constitution and the law, would be pleased to see the Hoover policy of enforcement a pronounced success. There is reported uneasiness among bootleggers of Kansas City and Washington, both because of that policy and the heavy penalties of the recently enacted Jones bill, while there also some rumors of a professed indifference among the illegal fraternity of New York on the ground the new penalties are so severe juries wouldn't convict. Maybe not, if the juries were as well as New York is supposed to be. But in general, juries being a part of the American public which is unquestionably fit, would be glad at such a chance against the big bootleggers at the Jones bill. For if there is any element in the country that deserves strict handling under the law it is the class that consistently has thum-

normally is higher, and permits sufficient production in summer when cows are on pasture. A large surplus of milk in summer results not only in much lower prices for milk and butterfat during that season, but also in reduced returns for the year. Range herds of breeding cattle should be limited to the number the forage can support in "lean" years rather than in "fat" years. Overstocking is one of the main factors in losses from starvation. SAGRALEN POSTMEN USE SKIS IN WINTER MONTHS OTARU, HOKKAIDO, Japan. (AP) It is the ski-mail that carries on communication across the in-

ternational border in the far northern island of Saghallen, Japanese below the 50 parallel and Russian above. Every Thursday, during the five month winter, lasting well into April picked runners from the larger cities on either side of the line meet at the border to exchange mail sacks. Peanut Vendor Barred. HAVANA (AP)—Peanuts, in their "bags" or in Spanish equivalent, will be heard no more on the principal streets here. The secretary of the interior has so decreed. Located at Last. TAMPA, Fla.—(AP)—John Law is the name of a deputy United States marshal here.

GOBS OF JOY AT HUNTS CRATERIAN

Arthur "Pat" West, a man of many strange anomalies, one of which is that he has never been in any navy of any nation, save in Fanchon & Marco's navy, on the super-dreadnaught, the good ship "Gobs of Joy" which comes to Hunt's Craterian theatre today. Although Pat West is only a gob on board the "Gobs of Joy" ship, he rates as an admiral with four stars in the fun-making festivities aboard that jolly ship. One of West's chief ranking officers is Scotty Weston, buck and wing champion of the Pacific Golf. Scotty, a native of that city famous for its inhabitants who squander their money right and left, Glasgow—joined the fleet on the assurance from Pat West that he could do his buck and wing dance in his bare feet—to save shoe leather. Also in the crew of the ship are a complement of dancing gobs and entertainers including Bolly Kramer the little girl with a big voice; Blah and Thurston, Moore and Moore, Hewitt and Jones, Coley and Leeper, Wanda Allen, Henry Acquire and many others. The screen attraction is "Riley the Cop," a comedy starring Pauline MacDonald and Louise Fazenda.

PRINCE TO WED BROADWAY STAR



Mabelle Corey, who as Mabelle Gilman was a famous beauty in Broadway musical comedies of 1907, says she may soon wed Don Luis de Bourbon, first cousin of the king of Spain.

Coming Attractions

To the Rialto The picture of a beautiful girl, viewed in the midst of an African jungle, sends Milton Sills back to civilization to find the woman pictured. But it is not the unquestioned beauty of the pictured woman that intrigues him as he traces the girl's history before finding her, but the steady and amazing progress she has made upward in her career. This is the beginning of the story of "Love and the Devil," starring Mr. Sills, coming to the Rialto theatre tomorrow. Sills plays the part of a titled English explorer who is first interested in, then in love with and later furiously jealous of Giovanna, famous prima donna, played by Maria Cepha, famous Hungarian actress.

Society Comedy at Rialto Today

Many of us who have imagined how content we would be with fifty thousand dollars in the bank have an opportunity to learn how quickly that amount can be made to disappear when we see "Children of the Ritz" at the Rialto theatre today. In the whirl of New York's dimly high social stratum this fifty thousand last Jack Mallinck and Dorothy Mackall is very short time indeed, and four thousand dollar fur coats and fifty-dollar-a-plate dinners parties help in the reduction process. This high society comedy is packed with amusing and pathetic sidelights on the difficulties encountered in an extravagant girl's house spending money is suddenly reduced from thousands to hundreds, married to a boy who thinks he is rich. He learns that fifty thousand in the "Ritz" is actually almost poverty.

Simple Diet BELFAST, Ireland.—(AP)—John Slater, 23-year-old patient at the Derby infirmary, convalescing after an operation, gives his recipe for longevity—potatoes, porridge and sour milk formed his diet for more than 40 years.

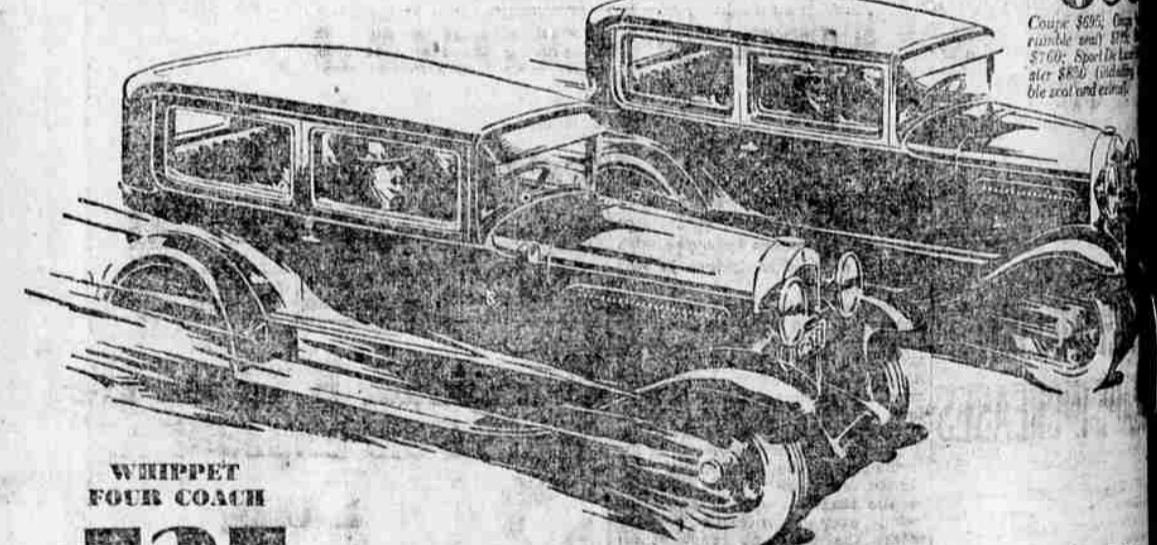
URGE ABSTINENCE CAMPAIGN AMONG AMERICAN YOUTH

CASSTON, Ill.—(AP)—The men's Christian Temperance Union is urging a national abstinent campaign among American youth. A child was a member of the organization. The organization is urging a national abstinent campaign among American youth. A child was a member of the organization. The organization is urging a national abstinent campaign among American youth. A child was a member of the organization.

BRITISH FIRMS SET TO LONDON HEADQUARTERS The great war here was a able concentration of capital of all kinds in London. A few years ago the British many great British firms were in provincial cities. The transfer of the headquarters of the White Star line has drawn attention to the possibility of other firms moving to London. Already all the banks of the country are being urged to move to London. Provincial cities like Manchester, Birmingham, Liverpool and Glasgow are being urged to show a similar trend. Provincial banks still maintain branches here, but the trend toward the Thames is obvious.

FRENCH ACADEMY FAVOR WOMEN PARIS.—(AP)—Women's strength of command of the French Academy, is held by the forty members of themselves, though when asked by the National Women's Club, they favor women.

Sales doubled THROUGH GREATER BEAUTY LARGER BODIES

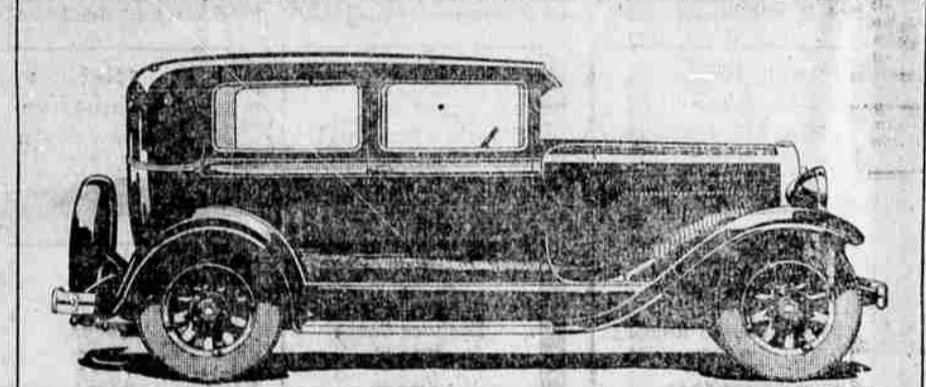


WHIPPET FOUR COACH \$535 Coupe \$335; Sedan \$395; Roadster \$485; Touring \$475; Commercial Chassis \$365. All Willys-Overland prices f. o. b. Toledo, Ohio, and specifications subject to change without notice. JANUARY AND FEBRUARY SALES 100% AHEAD OF LAST YEAR. STARTING with its first presentation to America's motorists, the new Superior Whippet has aroused an ever-growing tide of public enthusiasm. In January and February, sales showed a gain of more than 100% over sales for the corresponding months of 1928. This is dramatic proof of the new Superior Whippet's tremendous popular acceptance as the finest value ever offered a Four or Light Six driver. You will readily understand such remarkable success when you see and drive the car. An inspection reveals the new Superior Whippet's beauty of design and tasteful refinement of detail. A demonstration reveals higher speed, faster pick-up and greater power, together with ease of control and comfortable riding qualities never before associated with such an inexpensive car.

NEW SUPERIOR Whippet FOURS AND SIXES. WILLYS-OVERLAND, INC., TOLEDO, OHIO. TREICHLER MOTORS, INC. 30 North Holly Phone 615

Scientific Notes

Tracing cloth used by draftsmen in blueprinting drawing may become popular as a curative material as a result of an accidental discovery that the fabric admits the heatproof ultraviolet rays of the sun, usually excluded by paper and other kinds of cloth. Aluminum is combined with other metals, according to reports of processes developed by a San Francisco inventor, to form valuable alloys. With gold, a hard, light alloy is prepared; a silver mixture so hard that it can be sharpened to a razorlike edge is also made, and copper is made suitable for use in tools. Sailing over the center of an earthquake just when it occurred was the experience of a British freighter recently. She was off the coast of Chile when three heavy bumps were felt as if she were scraping the bottom, though the charts showed the depth of water to be over 100 feet. Studies are being conducted by the army research board at Manila to discover if insects may not be carriers of leprosy. The investigation was started several months ago and, although but one case of transmission of the disease by a mosquito has been definitely recorded, the experiments are still under way. Clean rags wanted at the Mail Tribune office.



In Keeping With Its Fine Car Engineering Standards, Oldsmobile Now Offers A Feature Characteristic of High-Priced Cars— PRESSURE LUBRICATED PISTON PINS

PRESSURE-LUBRICATION of the piston pins has long been considered a mark of quality in automobile engines. Only twelve other makes of cars are listed in the annual issue of Motor with this advanced engineering feature. And only one of these is within \$500 of Oldsmobile's low price. In the 1929 Oldsmobile, oil is forced to the piston pins through rifle-drilled connecting rods, instead of being splashed from the crankcase in the conventional manner. And the main, connecting rod and camshaft bearings are also lubricated under pressure. This feature is important to the man who seeks motor car value—because it adds to dependability. Typical of Oldsmobile's quality construction are such features as its General Motors Research high-compression cylinder head... rigid crankshaft... double-ribbed crankcase... the engine protection afforded by oil filter, air cleaner, gasoline strainer and crankcase ventilation... thermostatic charging... controlled cooling... fuel pump... full automatic spark... rubber engine mountings of special design... silenced chassis and silenced interior. And Oldsmobile's big high-compression engine now develops 62 horsepower—combining brilliant speed, power and acceleration with remarkable smoothness, quietness and economy of operation. This fine car engineering gives Oldsmobile buyers an assurance of long life, dependability and thorough satisfaction.

NEW LOWER PRICE \$875 Spare Tires and Bumpers Extra. Oldsmobile. Armstrong Motors, Inc. 101 So. Riverside Phone 18