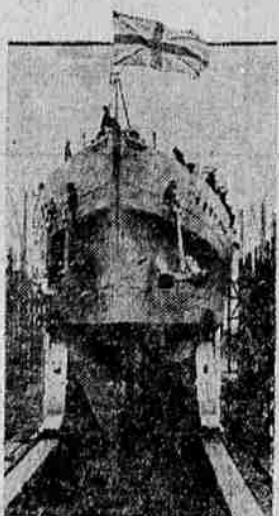




NEWS of the DAY in PICTURES



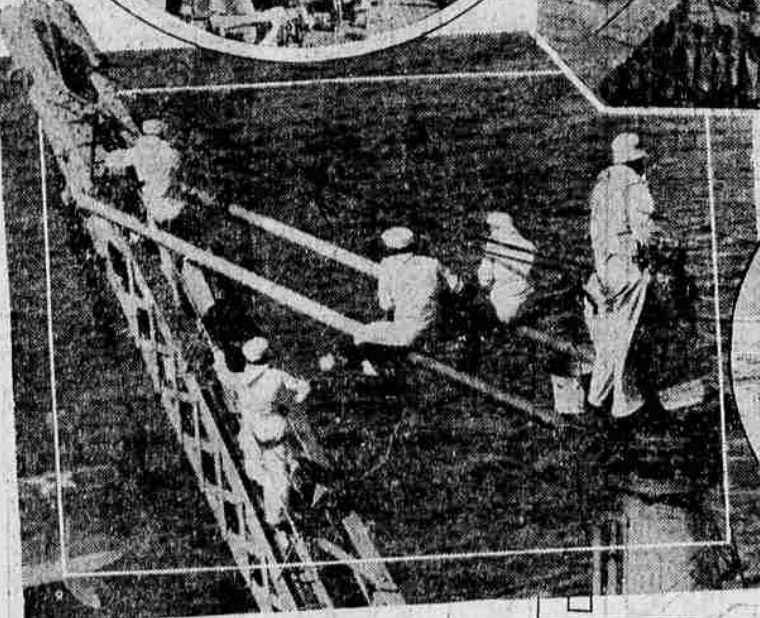
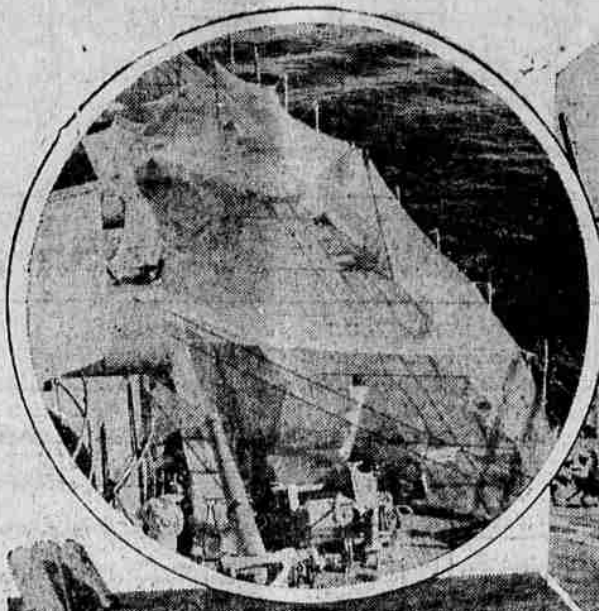
EVERYTHING IS COLD AND WHITE when a heavy snow fall mantles the Capitol grounds at Washington. The dome of the Capitol building stands out in lonely splendor in this striking picture taken at night.



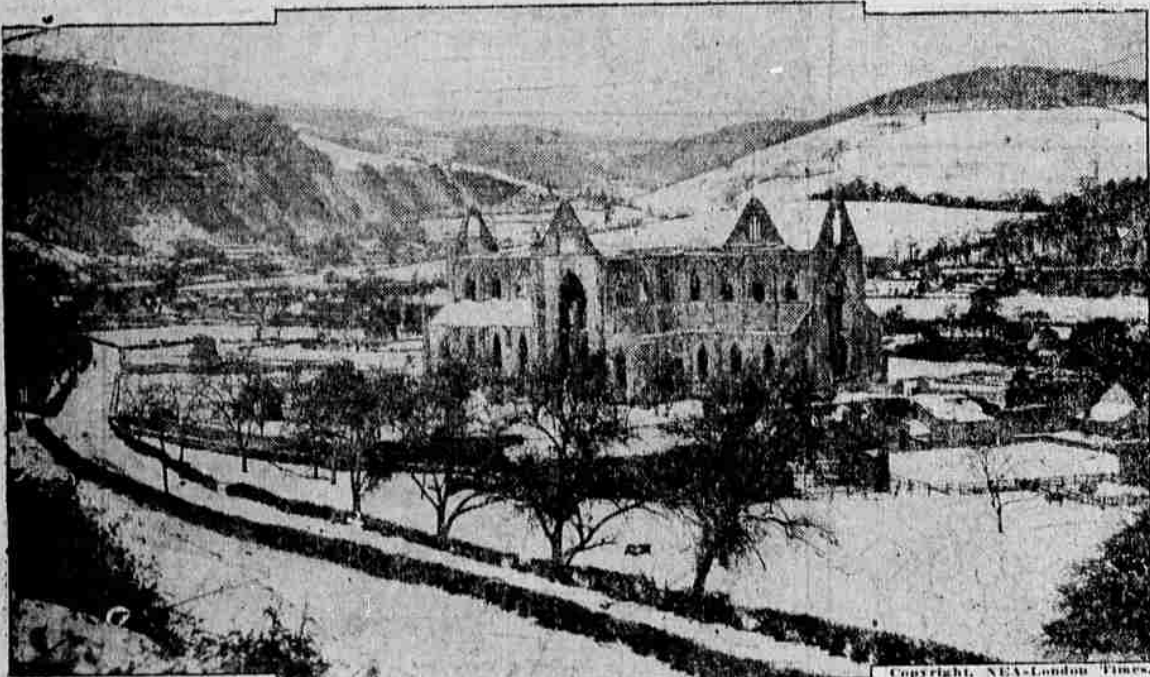
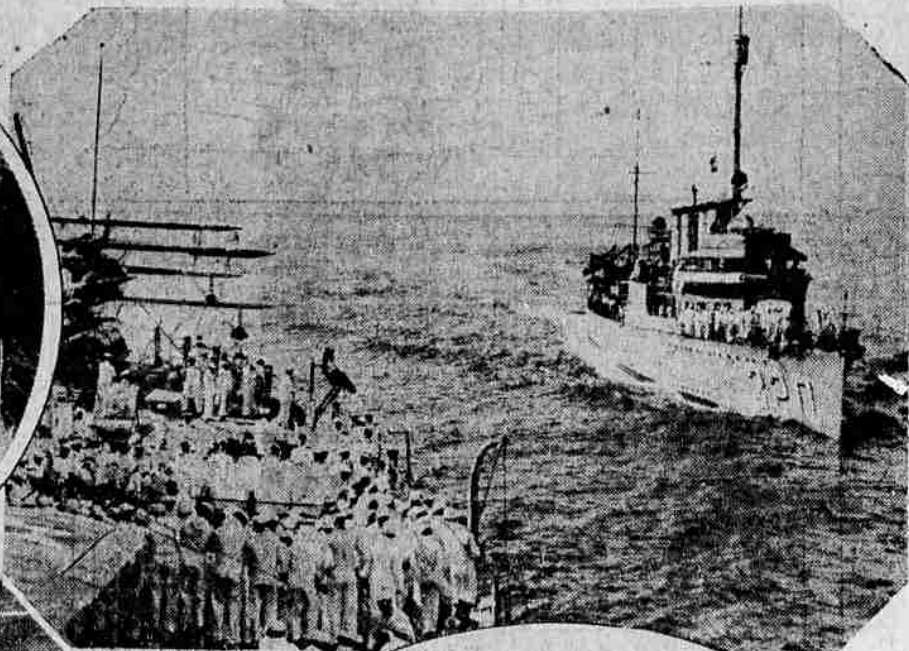
NO TREATY keeps England from adding to her cruiser fleet. Here is H. M. S. Dorsetshire, latest of the 10,000-ton class, about to take the water at Portsmouth Docks, England.



GRAND MASTER of Scottish Freemasonry is the Earl of Stair, war veteran and holder of numerous decorations for bravery.



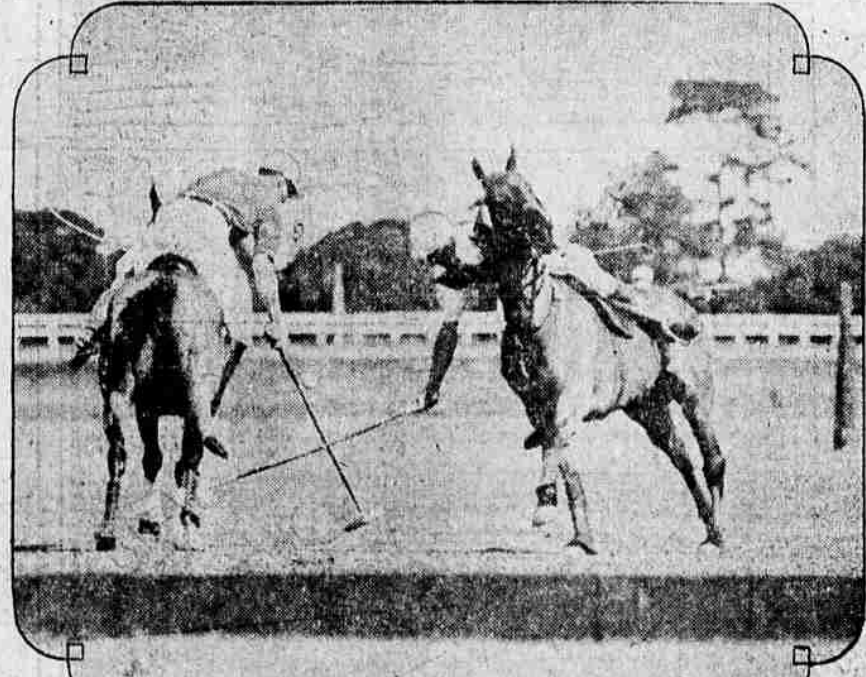
LIFE IN THE NAVY IS A VARIED SUCCESSION OF THINGS—INCLUDING WORK AND PLAY—as these pictures show. Above, at the left, baseball players on the battleship California are practicing in a cage set up on deck; below it, a group on the same ship is scrubbing one of the huge cranes. At the upper right the destroyer Selfridge is seen approaching a battleship in maneuvers in the Pacific. Below it are a group of submarines and their tenders anchored in the inner harbor of Balboa, in the Canal Zone.



BLANKETED IN SNOW, THE SCENE THAT WORDSWORTH LOVED takes on a new beauty as unusually severe winter weather visits England. The famous Tintern Abbey is shown here, with lovely Wye Valley stretching out in the background.



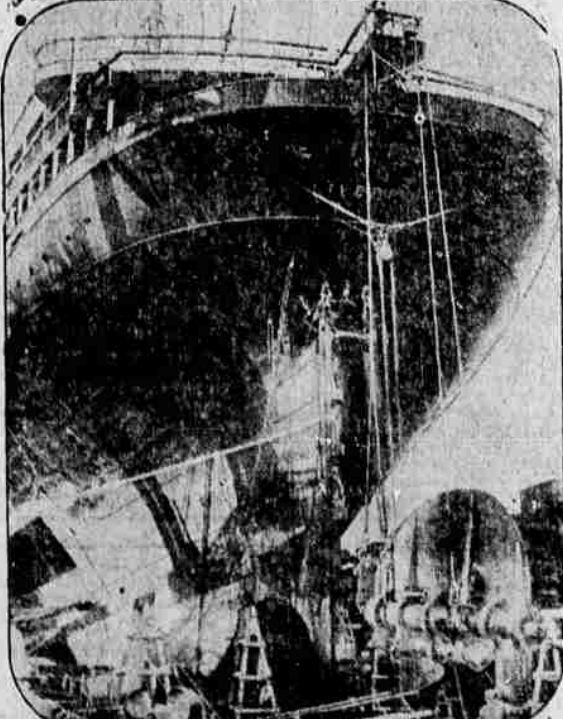
FETCHING—oh, very—is this beach costume worn by Miss Ruth Dodd of Atlanta, Ga., at Palm Beach, Fla.



THE RISKS OF A FAST GAME OF POLO are graphically depicted in this photograph, taken as Tommy Hitchcock and his San Carlos Cardinals defeated Eric Pedley and the Midwick team at Del Monte, Calif. Hitchcock, leaning far from his saddle, is at the right; at the left is Elmer Boeseke.



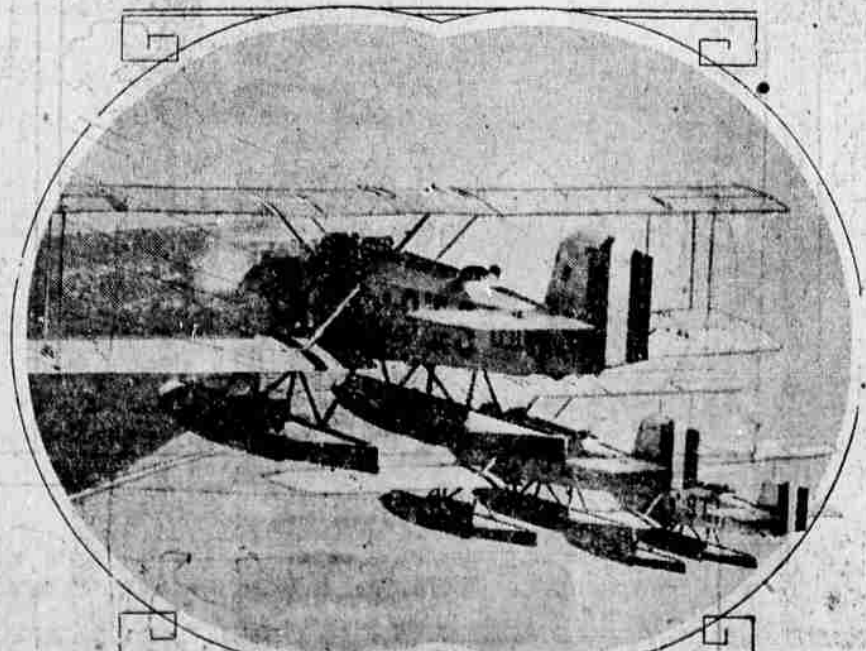
WAY UP IN THE AIR go Lieut. Robert L. Howze and his trained steed as they clear the barrier in the horse show held at Fort Bliss, Texas. The lieutenant is attached to the Eighth U. S. Cavalry.



IT LOOKS A BIT TOP HEAVY, when it isn't in the water, does the great liner Berengaria. The picture was taken when the liner went into dry dock at Southampton, England, to have her rudder re-shipped.



REALISTIC are the settings in the exhibits at Chicago's third annual Garden and Flower Show. Here's Phyllis Lane enjoying herself in an artificial pile of mossy rocks.



HOW MANY PLANES IN THIS PICTURE? It's hard to tell unless you look at it very closely—then you'll see there are three. They're naval seaplanes in the special service squadron, now on duty at Panama with the fleet.