

STOCK SICKNESS IS BLAMED UPON BARLEY DISEASES

By Frank I. Weller
(Associated Press Farm Editor)
WASHINGTON—(AP) With the government still involved in litigation with German importers of American barley grown last year, President Coolidge has asked congress for an emergency appropriation of \$38,250 to investigate the fusarium blight, or scab disease of the grain, which is blamed for sickness among livestock.

Through the arbitration board the London Corn Trade association, the state department and Germany are trying to settle disputes over payment for the grain. A test case has been made on the outcome of which the entire controversy is expected to be settled. A number of points have arisen and now are before English courts. The settlement is to be made under English laws.

The German purchase, involving between 20,000 and 30,000 tons of barley, was made at a contract price of about \$1.15 a bushel. Shortly afterward the export price fell to approximately 83 cents. The Germans say the grain is infested by several kinds of malignant bacilli which cause "scabbers."

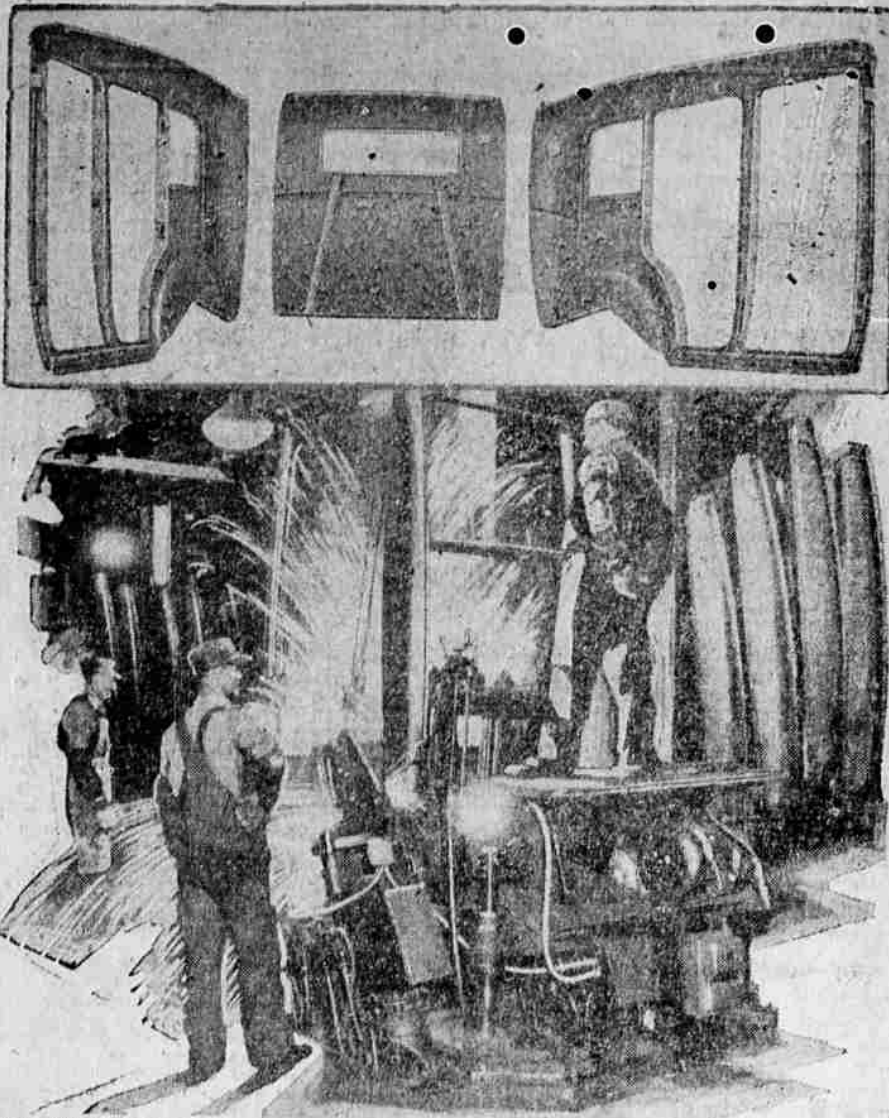
Animals eating it first become listless, gradually lose control of their limbs, and finally become generally paralyzed. Post mortem examinations are said to have established hyperemia, dropsy and an assemblage of fluid in the membrane of the cerebellum and in the spine. The symptoms are described as very similar to those observed after cattle have fed on darnel, a weed containing a poison known as temulin. Also, experts have traced in the barley poisons called cholin and thionin, which they say point to fungoid contamination, and affect the intestinal functions.

One dispute to be settled is whether the grain which poisoned the animals was a part of the No. 2 barley shipped from New York, Baltimore, Boston and Norfolk last September. The Germans say it is, and have placed an embargo on barley from the United States, except that grown in Texas, Kansas, Oklahoma and Colorado. Meanwhile, barley cargoes lie in various German ports under seal. Cattle breeders are afraid to feed it, and the government is anxious not to extend the embargo, which was set for expiration February 28.

It is understood that the purpose of the \$38,000 appropriation is to conduct federal seed tests in this country to determine what affect the scab disease has on livestock. Experiments already are underway at Purdue university, in Indiana, and at the University of Wisconsin college of agriculture. Dr. A. F. Woods, federal director of scientific work, told congress the scab disease is causing heavy losses to barley growers in Ohio, Indiana, Illinois, Iowa, Michigan, Wisconsin and Minnesota. Part of the money would be used in tests to see what may be done with the diseased crop.

Fusarium blight, which is largely preventable by proper seed treatment and by careful preparation of a seed bed from which all corn stalks, wheat straw and other refuse are eliminated appears very noticeably during humid summers.

How Mono-Piece Bodies Are Made



© 1929 Dodge Brothers Corporation
Mono-piece bodies, an exclusive feature on the new Dodge Brothers Six models, are joined into a solid piece by giant electric welding machines. Above, are the three major sections, each panel being made from a single piece of metal. Below, the welding process is being completed. The mono-piece construction gives strength, rigidity and beauty to coach work, and practically eliminates body squeaks and rattles.

A WONDERFUL BUSINESS YEAR SAYS GRANT



R. H. GRANT
Vice President in charge of Sales
Chevrolet Motor Company

DETROIT, Mar. 17.—Returning here after an absence of nearly six weeks, during which a majority of the larger cities west of Chicago were visited, R. H. Grant, vice president in charge of sales for the Chevrolet Motor company, expressed himself enthusiastically over the existing prosperity and the indications that this generally prosperous condition will continue throughout the year.

The tour was made in the company of several Chevrolet department executives and a close study of local and district business activity was made at each point through personal investigation, contact with hundreds of Chevrolet dealers, bankers and other business men.

In Portland and all over Oregon the Chevrolet party found business generally on the up-grade with every indication of unusual activity throughout the year. The outlook for the lumber industry is generally better than for some years. Oregon's excellent system of highways and those of Washington and California, has done much toward shortening distances and has proven the greatest stimulus to decentralization of population and greater activity for the farmer, the stock raiser, the fruit grower

let, with its new and greatly improved six in the price range of the four, is sitting right on top," said Mr. Grant.

"At the time the new six cylinder Chevrolet was announced we predicted a volume of 1,200,000 units for 1929. As a result of this tour thru the far west I think we are warranted in raising that figure to 1,350,000. Beyond that mark we cannot go with our present production facilities, but these can be increased if the market warrants it."

FLORIDA INDIANS HATE TO DEPART AS FLOOD NEARS

MIAMI, Ariz. (AP)—Day by day the waters of the lake created by the new Coolidge dam are rising and creeping toward the lands of 600 Apache Indians whose property eventually will be submerged. Again the red man is moving at the heat of the pole face. Although new lands are to be given him in exchange and some \$14,000 paid for the inconvenience and trouble caused, the Indian is singing his song of lament into the ears of the great white father at Washington.

"Perhaps, after all it is a song of bargaining rather than of sorrow for at a recent conference with government officials at San Carlos, Ariz., a spokesman for the assembled Braves concluded his speech with the words, "Indian no want new land. He satisfied with land his forefather pick out here. He no want move. White man say he must so now Indian here to get all he can."

H. S. Fleke, Indian inspector, speaking through an interpreter to the people of Chief Talkall, direct descendant of the famous Geronimo, to Chief Big Horn and some 50 representatives of the Apaches outlined the proposals.

"The government is not trying to steal your land or your home," he said. "It has been necessary to ask you to move from the land you now occupy but the government is giving your tribe \$6,000, and \$50,000 to be divided among the individual Indians."

"There are just 600 of your Apache Indians here who must move to new lands and there are 4,000 Pima Indians who will have the first prosperity they have ever known through the waters which will be stored by the great Coolidge dam. They do not belong to the same tribe as you but they are your people. You should be glad to help them. It means much to the Pimas and you are not losing anything. The government is giving you money and new land."

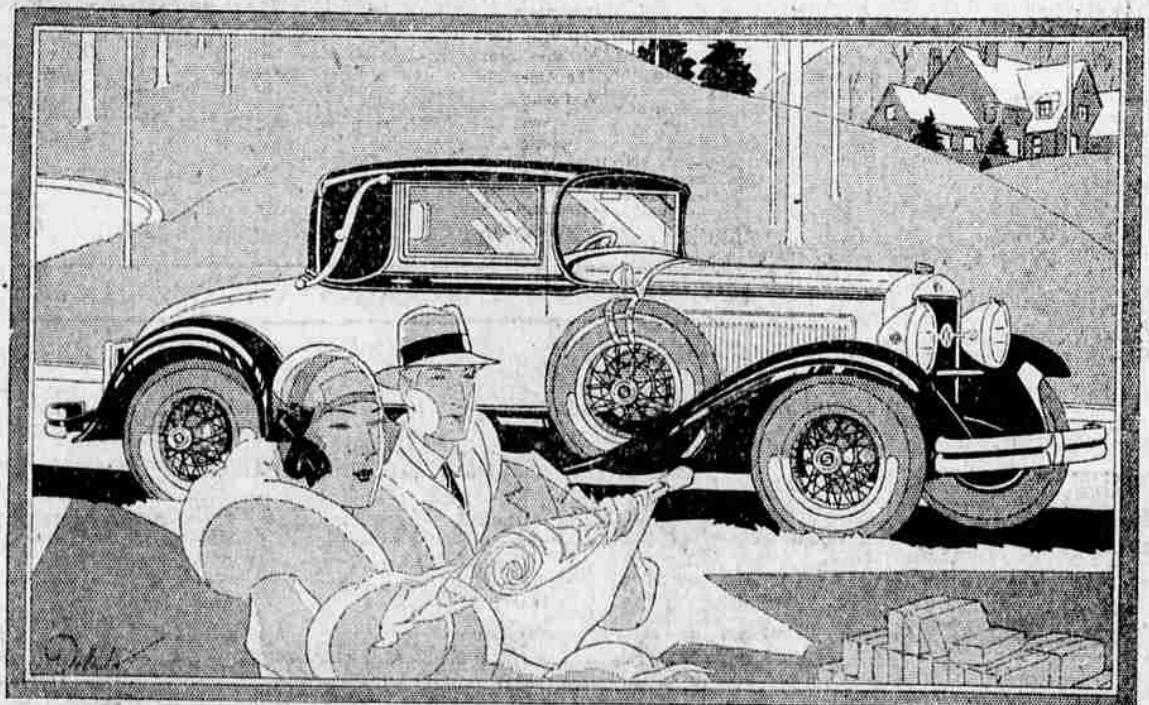
"We understand," answered the spokesman, "we move, but first we get government to promise good lands with water."

The Apaches have been told they could have their choice of any ground for which irrigation water can be found.

Medford is the county seat and metropolis of the Rogue River valley and gateway to Crater Lake.

Greater than ever with Straight Eight Power!

Studebaker's famous
COMMANDER
AS AN EIGHT AS A SIX
\$1495 - \$1350
at the factory



COMMANDER EIGHT CONVERTIBLE CABRIOLET, \$1645; With six-cylinder motor, \$1495. Six wire wheels and trunk rack standard equipment. COMMANDER EIGHT COUPE, \$1495. COMMANDER SIX COUPE, \$1350. Prices at the factory. Bumpers and spare tires extra.

THE fine and final touch of modern motoring—straight eight power—now lends its liquid fluency to Studebaker's famous Commander!

The new Commander, now available as either an eight or a six, worthily succeeds to the renown of its illustrious predecessor, which sped 25,000 miles in 22,968 minutes.

The Commander's potent appeal of tireless speed is admirably matched by youthful, vivid style. Lines are lower and longer because of Studebaker's costly double-drop frame. Even in repose, you sense The Commander's fleetness, and its power, and its brilliant department.

Restful riding, such as motoring never knew until Studebaker introduced ball bearing spring shackles, is still further enhanced by hydraulic shock absorbers.

The sum of the new Commander's qualities, make it now, more than ever, "the greatest motor car ever built and sold at its low One-Profit price."

STUDEBAKER MODELS AND PRICES

The President Eight	\$1785 to \$2575
The Commander Six or Eight	1350 to 1675
The Dictator	1265 to 1395
The Erskine Six	860 to 1045

PRICES AT THE FACTORY

Tune in on "Studebaker Champions"—Sunday Evening—7:15 to 7:45 Pacific Time, Stations KGW, KHQ, KOMO and NBC, Coast-to-Coast Network

O. V. MYERS CO.
Studebaker Dealers
132 South Riverside
Phone 464



The officer of the law picked his way thru the rapidly growing crowd and picked up the slightly battered victim of a passing motorist. He pulled out his notebook and grabbing the poor man's arm, said gruffly, "You say you didn't see the license number, but could you swear to the driver?"

But if you ask "Which way to Heaven?" He could tell you the way.

"Thanks, thanks to thee O smiling friend, For the new tube you have bought! We judge the old one good enough 'Thou'gh patched, 'I would go, we thought!"

We ramble on while musing o'er The changes time has wrought.

One cannot get the horses shod For love nor yet good pelf, So get an anvil and a forge And do the work yourself. But learn the trick or you may lay A good horse on the shelf.

Copyright, Moss Feature Synd.

Moon Is Like Volcanic Ashes

No one knows for sure of what the moon is made, but temperature tests during the last eclipse indicate that it is composed of a

The Age of Miracles Is Not Past

Scotchman Sends Treatment and Refunds Money If It Fails

Acid Stomach, Gastritis and Stomach Ulcer Pains Stopped Overnight

If you are suffering from any stomach ailment, no matter what the doctors call it, you owe it to yourself and your family to try Mission Compound.

It has been recommended by many Pacific Coast Physicians in their daily practice for years.

No matter where you live, what station of life you occupy, or how long you have been sick, you owe it to yourself to try this wonderful treatment.

No starving diet, no discomfort or distress. You can eat the things you like after taking the treatment a few days.

Simply send your name and address to FRISK, executives, regarding the trial treatment which lasts 16 days. The cost is trifling and is sent under an ironclad guarantee to return your money if you are not satisfied. Could any thing be safer?

Write now, before you forget it, to D. McCondrick, 4317, Lombard Drive, Dept. 441, Los Angeles, Cal.

GOITRE NOT A DISEASE

MILWAUKEE DOCTOR MAKES REMARKABLE DISCOVERY

Milwaukee, Wis.—It has been brought to light by scientific research that goitre is not a disease and is got to be treated as such. Dr. A. A. Beck, Dept. R-52, Box 737, Milwaukee, Wis., a prominent goitre specialist for over 24 years, has perfected a different method of treatment for his patients that has proved remarkably successful.

DR. RICKERT says:
Trained sight develops the trained mind. Untrained sight hinders the mind. Let nothing hinder you from getting an examination today. We educate and train sight.

DR. JUD RICKERT
OPTOMETRIST
222 E. Main — Medford Ore.

Ride With Southern Oregon Stages

The pioneer line of southern Oregon operating local service from Medford to Klamath Falls.

This company has served you faithfully in past years and will continue to give you excellent service.

Business leave from Hotel Jackson

Leave Medford—	A.M.	NOON	P.M.	P.M.
	8:20	12:00	3:20	8:25

Leave Ashland—

A.M.	NOON	P.M.	P.M.
8:50	12:30pm	3:50	8:55

Southern Oregon Stages

Hotel Jackson Phone 308



WE USE
HAWKISON
VULCANIZING SYSTEM
All Work Guaranteed
Whipps Auto Park
Highway at Jackson
Phone 1037-R

Scientific Notes

A wonderful new metal, one-third lighter than aluminum and with most of the valuable properties of steel, will soon be placed on the market. Assuming that its cost is not prohibitive, its use will greatly reduce the weight of airplane engines, and providing its price eventually becomes low enough, it may also be largely employed in automobiles with vast reduction in weight. The name of this new metal is beryllium, a chemical element like iron, copper, aluminum and lead.

Plans have been completed for the construction of a three-story glass house on top of a New York building. It will be made of glass "bricks," translucent, but not transparent. They will be connected by concrete and steel reinforcing. Interesting effects in lighting will be produced at night, when the house is illuminated from within, the architect promises.

Unusual experiments that will have a far-reaching effect on airplane design are being conducted at Langley field, Va. The air resistance of the increasingly popular radial air-cooled aviation motor, which now is one of the most serious drawbacks of this type of airplane, were tested and reduced by more than thirty per cent by a radical change in streamlining the cowling, which diverts the propeller slip stream around the motor and yet does not interfere with the cooling.

When Dr. Thomas A. Jaggar, director of the Hawaiian volcano observatory, predicted, the other day, that there will be an eruption of either Kilauea or Mauna Loa this year, scientists paid attention, for his prophecies with regard to the action of volcanoes have been fulfilled with remarkable consistency in the past. A volcano is not a clock," he explained. "The internal theory is based on averages and the averages are based on certain laws of nature such as those that determine the space intervals of apple marks in the sands of the sea, or the time intervals when they break rhythmically on the beach."—Popular Mechanics Magazine.

NEW YORK, March 16.—(AP)—Woodrow Wilson is the subject of a play by A. R. Pinck. Production this season is forecast. One of the eight scenes shows a cabinet meeting after the Lusitania was sunk.