

Fashions Fancies from Medford Shops

—By Margie

Ethelwyn B. Hoffmann showed me a delightful banana color knitted ensemble in soft wool and silk. I could see myself wearing that costume in several different settings. At church on Easter Sunday was the first place I thought of. There are three pieces to the ensemble, and four with the smart little banana straw hat banded in a deeper shade of grosgrain. The sweater blouse is sleeveless, with a collar, and the short over-jacket has sleeves and, of course, no collar.

That silk ensemble in brown, orange and yellow, is one of the cleverest combinations I saw on my shopping tour. It's in the window at Hoffmann's now. The brown skirt is knife-plaited and the short coat is all brown. It's the blouse of bright orange that interested me. The scarf collar is detachable and a futuristic design is stenciled here and there. There's a hat for this costume and it's that wonderful sisal straw with a long side effect.

Tailored suits in navy or tweed mixtures, double breasted or single, may be found at Burleson's Ladies' Ready-to-Wear store. For activity, comfort and neat appearance there's nothing like a spring suit worn with a tailored blouse and a bright tie.

In fact they carry everything from formal frocks, afternoon dresses and sport outfits to hose and lingerie. Navy cigarettes in either emerald or olive, trimmed with attractive stitching, unusual collar and cuff ideas, lace or a lighter color georgette are always good. Every woman and girl should have at least one darker dress even for spring and summer. They're the type one's friends don't like. One of Burleson's ensembles has a bright blue transparent velvet coat over a blue silk polka-dot print.

Spring house cleaning is in full swing. Now is the time when Medford housewives should plan some gay house dresses to carry out the atmosphere of another season. Montgomery Ward's have hundreds of models in every conceivable color and pattern. Why not wear green or orchid dresses if your kitchen stove and other kitchen furniture is green? And yellow house dresses are pretty.

For the women Montgomery Ward's have a wide variety of dresses in a multitude of colors, in double prints or plain materials. Their sport coats are good-looking and well made, belted or belless, dark or light.

Prints that tell a story complete with characters and interesting settings are used in making many of the clever dresses that the Cinderella Shop is showing. Some of the prints are ensemble. Some are not. All are smart.

Several of the outstanding dresses are tailored, straight lined models made of Japanese print. Each of these is strictly Oriental, the material being a study in carefully blocked figures, human and animal, and the trimmings an artistic pin or buckle.

Denure and dainty prints, wall paper designs, fruit print, modestly done, and the popular polka-dot material are all included in the complete stock of feminine apparel carried at the Cinderella. If a fluffy, flared dress is wanted it may be found there. If one seeks a frock which will make the wearer look slender, the Cinderella has it. If one is already too slender, the Cinderella shop has the dress to furnish the curve effect.

Speaking of flattering fashions and dresses that are different reminds me of the bewitching chiffon prints that Mullin's store is featuring. One of these has a flared skirt with the uneven hem effect created by pointed flounces. The background of the material is black and the print is mostly orange in several shades. A same in the back is particularly becoming to anyone tall enough to wear it. A similar model in brilliant orange and contrasting colors is also attractive.

Greta Garbo is responsible for some of the smart navy blue coats I tried on at Mullin's. The Swedish actress was at least the inspiration for the stand-up collar of Krummer in a lovely soft shade of gray. This particular type of collar is scalloped, as are the cuffs which are wider than ordinary cuffs. Then there are the Clara Bow and Billie Dove collars made of broad tan. Strictly sport are the caravan coats which Mullin's only sell in Medford. As the name suggests, these coats are made of imitation camel's hair, and they come in most any color one prefers, whether it be pastel green, bright red or just a good looking tan.

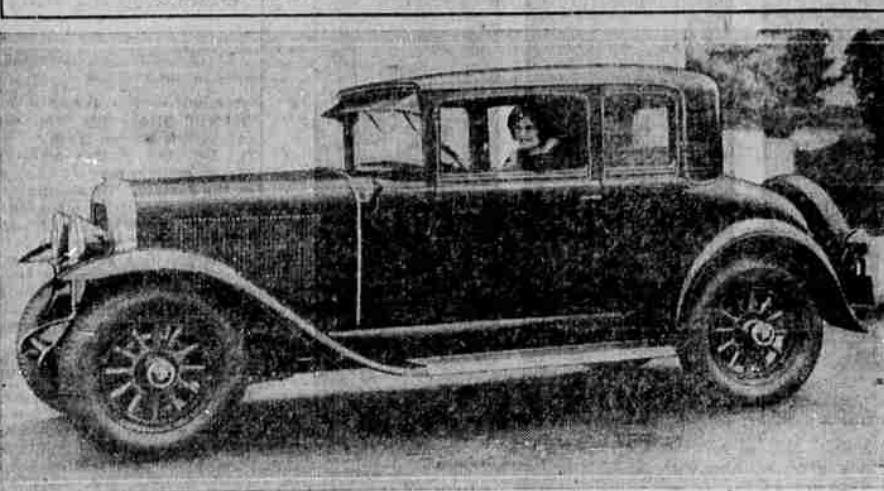
DOMMERGUE IS FIRST FILM FAN OF FRANCE

PARIS (AP)—President Dommergue is not only the first magistrate but the first film fan of France. He follows closely all the phases of the industry, and several leading producers, appreciating his kindly interest, gave a first private view of the principal releases exclusively for the President and his household.

For this purpose the large hall of fetes at the Elysee Palace, the French White House, is temporarily fitted up with all the necessary paraphernalia.

Much damage has been caused in Australia by "bush" or forest fires. Only a change of wind saved many towns.

Newcomer Is Welcomed to Famous Line



The newest—and nineteenth—member of the elaborate 1929 Silver Anniversary Buick array, presented to the Pacific Coast public for the first time at the opening of the present year. The new model is a four-passenger coupe, built on the 121-inch wheelbase and powered with the 90.5 horsepower Buick motor.

BAND BOX SHOPPE WILL OPEN DOORS TUESDAY MORNING

The Band Box, charmingly artistic home of the Gage and Monogram-Chapeaux, will open its doors to spring and welcome the feminine shoppers of Medford Tuesday morning, after having been closed for the past two months. Miss Emma Lou Kavanagh, owner and operator of both the Band Box and the Bunny Lou shop in the M. M. Department store, is enthusiastic over the delightful assortment of dainty Easter bonnets, scarfs and flowers which have arrived through the week, and which are now being arranged in the Band Box for the big opening Tuesday morning.

Simplicity and smartness mark the incomparable Gage headgear in both the dress and sport numbers, and will prove an inspiration to the feminine shopper who is now deciding upon her spring costume.

Levy's by Ekyou, linen-textured straw numbers, softer than felt and lighter than silk, will prove popular in the balmy weather of spring and indispensable in summer. Other straw and straw combination materials include the Ballantyne and the crocheted ribbon, in off the face ripples brims and other late models.

All the new spring color creations are to be had also in the Gage and Monogram headgear, including the favored Lido sand, Ode under yellow, Liberte and Medecine blues, Pandora green, Admia violet and Totem orange.

Miss Kavanagh also announces a new department in the Band Box for kiddie's hats, and for this discriminating clientele she has imported a complete line of Little Miss Sunbeam bonnets, including shirred georgettes, dandy straws, comb-brim braids and other combinations.

New Spring Modes Shown at Russell's

Outstanding among the ensembles at Russell's is a swanky suede flat crepe adaptation by Louvin in Jelveta green and waffle cloth in harmonizing shades. The dress in plain color and sleeveless. The sport jacket is made of foliage and flower applique on a tan background. An exclusive wide round collar of green is a unique detail. For dances or formal dinners nothing could be more striking than the Point gown of Rose Marie chiton creation at Russell's. The neckline is square in front with a definitely rounded back. An inserted collar section at the right side of the skirt falls to a graceful point below the hemline.

Russell's have Holeproof hosiery in all correct spring shades and in all the preferred grades from service to sheer chiffon.

Of special interest to the larger youth of the community is the announcement that silk ensembles and dinner gowns to fit sizes of any dimensions have been received at Russell's store. There are half and quarter sizes in numerous styles and materials.

Model Shows Derbies and Spring Garments

One of the most effective ways for a man to give his friends a treat these days is to don a derby. Whether one's fancy turns to top round crowns or to those not so round the Model Clothing store guarantees to furnish the derby preferred. The new models in wider brims and fairly soft felt are said to be comfortable, as derbies go.

Men's Shop Features Spring Sport Wear

Palmer Beach sleeveless sweaters for men are among the new sport the Men's Shop will stress at the spring opening. While in demand in this particular style white blue, green, ox-blood and seal to rare good-looking and more practical. These sweaters are in plain colors only and are knit of a fine quality silk and wool mixture in novelty weave. Another 1929 innovation is the "U" neckline, a moderated crew neck.

Hand braided sports leather belts in tan and gray combinations are also being shown at the Men's shop. And for the golf addicts they have handsome plaid four knickers in white or ecru poplin, either solid color or checked with black or brown. A complete line of fine worsted novelty weaves in knickers and sweaters with sleeves are carried at this shop.

Jacque Lenox Shows Clever Spring Hats

Petticoat hats are being introduced in Medford by Jacque Lenox, milliner. A long ruffled brim at the back with a narrow front, and novel trimming individualize these models of Swiss straw in light shades of tan.

Hand braided straw from Italy, finished with white ribbons, in bright orange, white, black and green fashions one of the hats of the wide brim variety which is banded with three colored chenille.

Two French hats by Agnes feature one of the newest fashions in millinery which isn't a fudge at all but scarf trimming for the hats to be thrown carelessly around the neck. One of these is made of Broche straw with the scarf ends attached at the back of the crown. The scarf is Goya red. The other hat is trimmed with a three-color scarf which is actually three streamers attached at the side and sewn tossed over the opposite shoulder.

Especially feminine are the hats of Japanese lace straw which resembles grandmother's old-fashioned basket hats. They come in light cream and the lining in most cases is of pastel, orchid or rose.

Studios Husky

PROVIDENCE, R. I. (AP)—The outstanding athlete is not always without scholastic honors.

Take "Al" Cornwell for instance. He was captain of the Brown university football team last season. He has won letters in three sports.

And when the Rhode scholars were chosen this winter, Albert C. Cornwell's name was one of the two picked in the state of Rhode Island, for with his interest in outdoor sports and his qualities of leadership he also combined scholastic attainments.

His scholastic achievements resulted in a letter from the state of Rhode Island, for with his interest in outdoor sports and his qualities of leadership he also combined scholastic attainments.

PHYSICIAN FINDS NEW 'WORK' CURE FOR CONSUMPTION

LEYSIN, Switzerland (AP)—The noted tuberculosis specialist, Dr. Rollet of Leysin, has successfully demonstrated manual labor as a means of combating tuberculosis, even in its surgical forms.

The Swiss village of Leysin has been for many years a Mecca of tuberculous patients from all over the world. In particular it has acquired a reputation for the treatment of various forms of tuberculosis of the bones.

There are many types of clinics at Leysin, ranging from palace-like sanitariums with huge comfortable glass galleries where well-to-do patients bathe in the sun, to humble "chalets" sheltering poor sufferers supported by their hard working families or charitable institutions.

It was his solicitude for the latter which led Dr. Rollet to experiment with his "manual labor cure." Dr. Rollet possesses not only a found knowledge of the psychology of the sick, condemned to endless days of immobility and idleness. His sympathy for the moral depression caused thereby, which hampers prompt recovery by unyielding the patient, suggested to Dr. Rollet the idea of resorting to manual work in order to stimulate the will to live.

"The first experiments of the labor cure, strictly individual and medically controlled," said Dr. Rollet, "soon yielded the results we expected. As soon as the patient affected by a surgical form of tuberculosis, emerging from the state of apathy into which he is sunk, pluckily takes to work the necessary cooperation of brain and muscles restores to the worker his self respect and sense of usefulness. Moreover, even small earnings contribute to relieve his anxiety of being a burden to his family and being new confidence and the hope that he can.

Fewer Wolves, More Sheep—COMANCHE, Tex. (AP)—In the last three years the sheep and goat population of Comanche county has increased 500 per cent, due in a large measure, breeders due to the decrease in predatory animals. In the same time 200 wolves and 42 bobcats have been killed. The county now has 30,000 sheep, 10,000 goats, and not more than 12 wolves.

ATHIS-MONS, France (AP)—The communist government of this town of 10,000 persons bought the

chateau of Avaucourt for a city hall. Echo de Paris, a nationalist newspaper in Paris sees danger in a strong communist colony so near the capital.

girl of 20 whose mother was 45. The son married the latter, making him his father's son-in-law.

Drop Word "Fireproof"—NEW YORK (AP)—The word "fireproof" never is used by an authority on fire protection, says an announcement of the Underwriters Laboratories here. Instead "fire resistant" is the term because "any building, no matter what its construction, can be destroyed by fire if enough inflammable material can be collected within or around it."

More than 380,000 passengers arrive or depart from Chicago by rail each day. They are carried by 2650 trains over 23 trunk lines and 15 switching lines.

Holeproof Hosiery—Endorsed by One of New York's Smartest Society Women

"Color correctness . . . the first requisite of hosiery smartness . . . finds its perfect expression in the Lucile-created Holeproof shades."

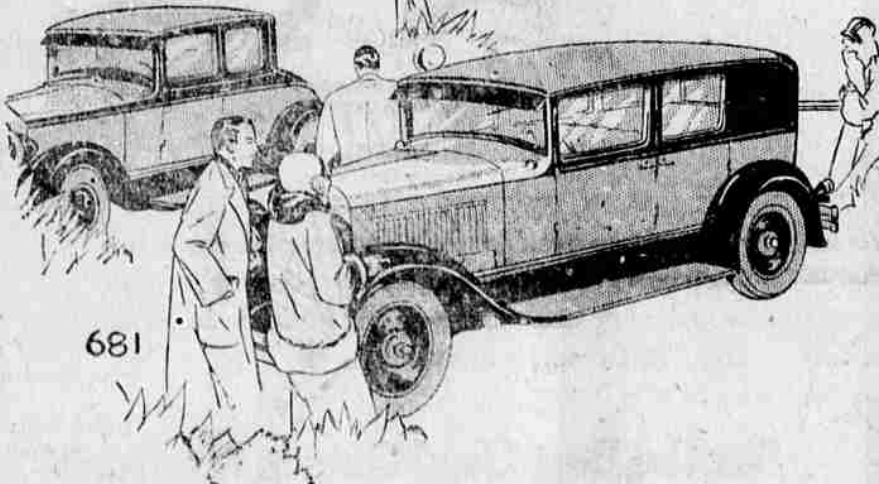
TODAY, in our windows, we show the full text of the letter from which this quotation is taken . . . And with it we show Holeproof hosiery in colors which Lucile of Paris has created to harmonize with the season's outstanding shades. New York's smartest society women welcome Lucile's fashion authority and choose with security from Holeproof colors the one perfect shade for each ensemble.

From our collection of Holeproof hosiery you can choose the correct color for your costume . . . created by authority . . . approved by authority.

RUSSELL'S, Inc.
Medford's Own Store



USED Cars



Have you felt that faint stirring of Spring within you . . . the urge to get closer to the beauties of nature and forget the smoke and noise of city life? Why stifle that perfectly natural craving when for such a SMALL DOWN PAYMENT you'll get here just the very car you like best . . . rebuilt and just "rarin' to go" on many country jaunts.

We have about 50 used cars and trucks to choose from and prices to fit any pocketbook.

Choose Your Car from a Bonded Dealer

We are certified and bonded by the State of Oregon. Your interest protected; your titles guaranteed. Buy your transportation from bonded dealers.

JOINT USED CAR LOT

Across the Street from Display Rooms

Medford Motors

Chrysler Dealer—Phone 762

O. V. Myers Company

Studebaker and Reo Dealer—Phone 464

128-132 South Riverside Ave.



Tailor Made Suits That..... Mirror the Mode for Spring

In our selection of the new fabrics you will find expressed the very essence of spring. The colors . . . the styles . . . the fashioning all bespeak a mode that is new . . . that is in harmony with spring. The man of the minute selects his clothing here, confident of Value and Style.

FREE OFFER FOR ONE WEEK

- With every \$70.00 suit we will give free a hat, pair of shoes and shirt.
- With every \$65.00 suit we will give free a hat and pair of shoes.
- With every \$55.00 suit we will give free a shirt and tie.
- With every \$50.00 suit, we will give free a shirt.

F. J. HUBER

TAILOR AND HABERDASHER

113 W. Main St.

Phone 799