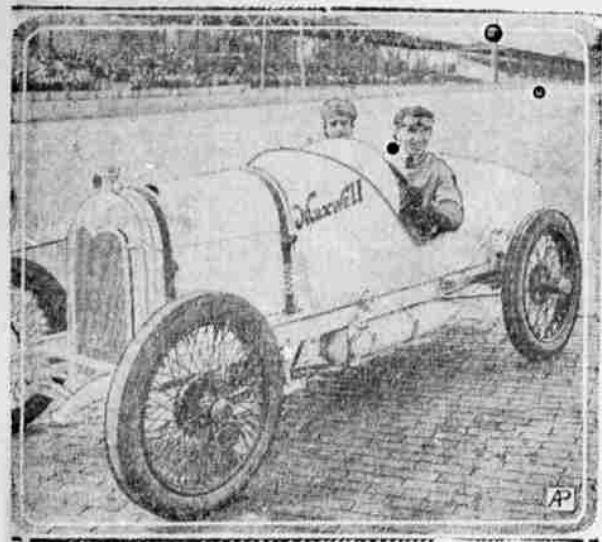


American Race Men to Turn Away From European Control



American motor car racing officials, who have decided to drop European racing specifications after 1930, have been told by Captain Edie V. Rickenbacker that the principal need today is for a simple and cheap racing car that will bring about practical results for stock machines. The picture shows Captain Rickenbacker in his racer on the Indianapolis speedway in 1915.

RESCUE SHIP TO LEARN FATE OF LOST COLONISTS

WASHINGTON, D. C. — More than half a hundred colonists on Wrangel Island have been cut off from the world for two years. Russia's concern for their fate has deepened into anxious worry because the rescue steamer Stavropol returned with the report that its effort to reach the island failed. The colonists, from whom no word has come since they were cut ashore on Wrangel in 1926, included, according to reports, fifty Eskimo families and six Russians. The "Home of Tragedy" "Wrangel's Island's record gives little encouragement to Russia's hopes," says a bulletin from the Washington, D. C. headquarters of the National Geographic Society. "Wrangel is the home of tragedy," it continues. "Death sought out those who dared to live on its shores."

"The island is 79 miles long by 28 miles at its widest, and lies 100 miles off the north Siberian coast. It is 200 miles north of the Arctic Circle. "Captain Thomas Long, an American, who first discovered in 1867 the true extent of the island, named it for Baron Wrangel, a Russian explorer. Forty years earlier the Baron had heard native reports of the island, but he had failed to find it.

Ship Crushed by Ice "Manikind left Wrangel Island to itself until January, 1914, when the Karluk was crushed into kindling wood by the ice. Captain Robert A. Bartlett led the main body of survivors 100 miles over the pack ice to Wrangel. With one companion he then crossed to Siberia, bringing news of the disaster. A rescue ship reached Wrangel in September. Of 25 on board the Karluk, 14 returned safely to civilization.

"In 1921 four men, with an Eskimo seamstress, elected to stay on Wrangel Island. They found it to be the home of many foxes and polar bears which they shot for food. Seal and walrus frequented the shores and, in summer, large numbers of birds, ducks, geese, terns, and snipe nested there. Driftwood lined the beaches as the sojourners did not lack for fuel. But the supply ship dispatched to Wrangel in the second year failed to reach the island. Three of the men started for Siberia and were never heard of again. On diet of surry; Ada Blackjack, the Eskimo, was the only human being on Wrangel when the rescue ship arrived.

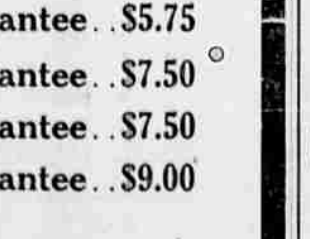
Confiscated for Catch "The Teddy Bear, that brought back Ada Blackjack, left Charles Wells and 13 Eskimos. They lived on Wrangel until a Russian ship took them off in 1924 and confiscated their fur catch. Wells and two Eskimos died in Siberia. "Wrangel remained untenanted until 1926 when Russia established the large and well-equipped colony which is now a source of worry. Of the six Russians left there, three are said to be men and two women. One of the latter is a nurse, another a teacher. They were the first white women who tried to live on Wrangel.

How Pleasant Are Evenings, Now that we have a home of our own

Young love can make of any home a palace, but what a difference if that palace is your own. Newly married folks can take advantage of the opportunities offered them by the

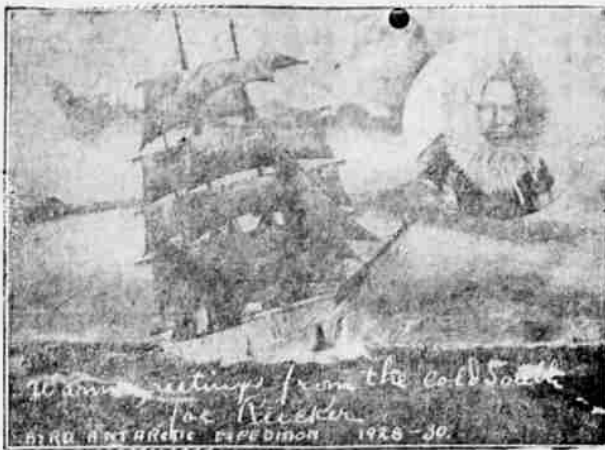
Convenient Home Loans OF THE JACKSON COUNTY Building & Loan ASSOCIATION

Let Us Tell You More About Our Home Loan Plan Over 19 years in Medford —Not one of our stockholders has lost a penny.



1522 North Riverside Medford

Christmas Card from Below Equator



Reproduction of one of the most unusual and the most interesting Christmas greeting cards received in San Francisco this season. It was sent from Joe Rankin, member of the party to Wrangel. The two are about 100 miles, brought together through their mutual interest in aviation.

Death Cause Unknown FULLERTON, Cal., Jan. 25.—A coroner's jury returned an open verdict concerning the death January 15 of Ferdinand Metz, Owen, Wash., and Denton, Ore., railroad men, whose body was found by the Santa Fe railway tracks near here. "We are unable to state whether this was murder or suicide," the verdict read in addition to declaring death having been due to a cut throat.

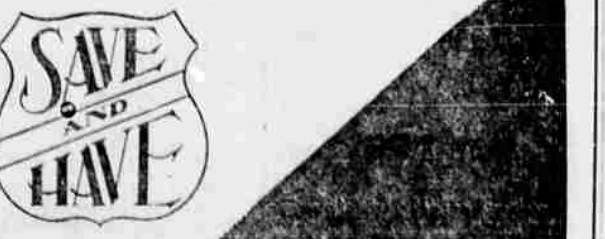


How Pleasant Are Evenings, Now that we have a home of our own

Young love can make of any home a palace, but what a difference if that palace is your own. Newly married folks can take advantage of the opportunities offered them by the

Convenient Home Loans OF THE JACKSON COUNTY Building & Loan ASSOCIATION

Let Us Tell You More About Our Home Loan Plan Over 19 years in Medford —Not one of our stockholders has lost a penny.



1522 North Riverside Medford

KANSAS COLLEGE TO GET REVENUE FROM CEMETERY

TOPEKA, Kas.—To help Washburn college live after his death, A. B. Whiting, one of its trustees for half a century, bequeathed it a cemetery. The idea providing the school a income from the sale of burial space to him in a dream years ago. The college has a 160-acre campus and he proposed to other members of the board of trustees that the "south eighty," a prairie at the time, be set aside for his dead.

The board rejected his plan, so he carried it out alone by buying a tract several times as large and creating the Mount Hope cemetery. A substantial income from the sale of lots in Mount Hope is expected for at least 200 years. More than half of it, in accordance with Mr. Whiting's will, goes to Washburn college. The balance is shared equally by the Y. M. C. A. and the Y. W. C. A.

Mr. Whiting, a native of Vermont, was a pioneer Kansas farmer and miller. His homestead, skated out near Fort Riley in 1856 five years before Kansas was admitted to statehood, was the farthest western outpost of civilization in Kansas territory. He remained active in business until his death a few months ago at the age of 84.

Classified advertising gets results

Advertisement for Larry Schade, Jeweler, featuring a pocket watch and the text 'NEXT TO CRATERIAN Larry Schade YOUR FAVORITE JEWELER SINCE 1918 Watch and Jewelry Repairing'

HARTFORD HOME OF MARK TWAIN TO BE A SHRINE

He needs no bronze or stone memorial. Yet we keep his home a shrine to all of our deep debt to him whose high desire found lusty joy along the common way.

HARTFORD, Conn.—(AP) Based, perhaps, upon the foregoing lines written about Mark Twain, a project is nearing realization to make the famous American humorist's home here a shrine to his memory. An option on the home expires February 1. By that date Miss Katherine Seymour Day, a descendant of Harriet Beecher Stowe and head of the memorial committee, hopes to have received the sum asked by the present owners of the property. The figure fixed under the option is \$155,000, and an additional \$45,000 is being sought to meet repairs and provide furnishings and maintenance. Efforts to save the home as a shrine began nine years ago.

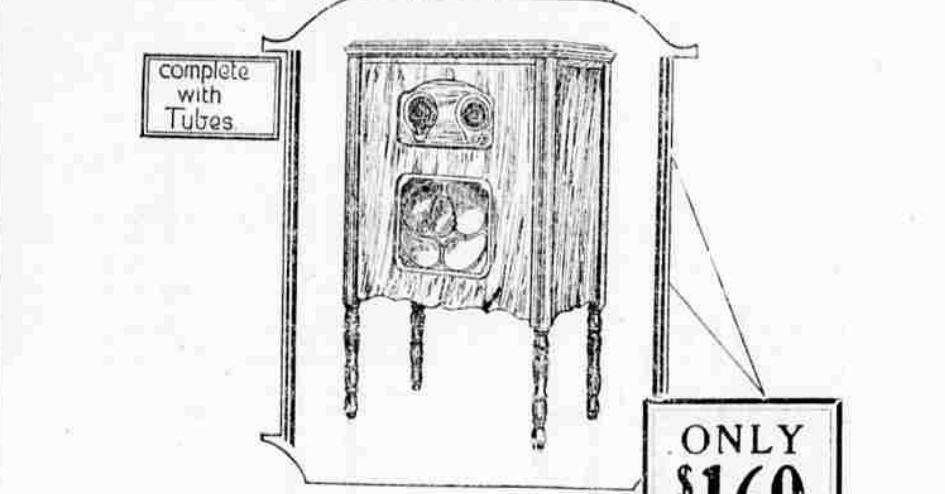
In this rambling old structure on Farmington avenue, Samuel L. Clemens, better known as Mark Twain, lived until 1891. Here he wrote "Tom Sawyer," "Huckleberry Finn," "The Prince and the Pauper" and other books. His close neighbors included Harriet Beecher Stowe, author of "Uncle Tom's Cabin," and Charles Dudley Warner.

As a shrine the house would reveal Twain's eccentricities. Restored as the author himself arranged it, the kitchen would face the street "that the servants might watch the circus parade without having to run through the house." The place where his billiard table and famous barrel of cigars stood would be indicated.

GRAND FORKS, N. C., Jan. 26.—(AP) Doughboys in the Grand Forks district are at war with the provincial police and have already won the first skirmish. Two provincial police officers reported today that they were forced to flee before an army of angered and naked Doughboys when they sought to arrest three of their members at a ranch near here.

Large advertisement for SEVERIN Battery Service, listing various battery models and prices, and including the slogan 'Don't forget when you buy a Battery of us, who make it, you will not be told, "We will send it in and see what will be done about it," but prompt adjustment will be made by us.'

Now! Exceptional Radio Value The Famous ATWATER KENT 40 with Dynamic Speaker in Console

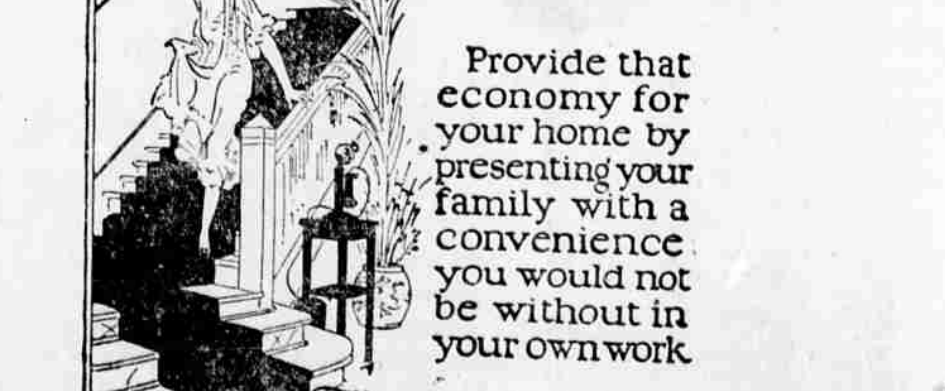


ONLY \$169 America's most popular radio, combined with a dynamic speaker, all in a handsome cabinet. This tremendous value made possible only through the buying power of three hundred authorized Atwater Kent dealers.

Sold by Your Local Dealer People's Electric Store

Mr. Business Man

You know the economy of an EXTENSION TELEPHONE



Provide that economy for your home by presenting your family with a convenience you would not be without in your own work. The cost is but a few cents a week. ORDER YOURS NOW

Home Telephone & Telegraph Co. Of Southern Oregon