

CAUSES OF WINTER INCREASE IN DEATH RATE

"Because food creates warmth, people eat more during the winter months. At the same time, because of the inclement weather, they fail to take sufficient exercise. These two factors in winter deaths, largely are back of the annual winter increase in the death rate," according to data revealed by O. O. Alendortler, local Frigidaire dealer, from his organization's research workers at Dayton, Ohio.

"An unusual feature of the winter food and health survey made by Frigidaire Corporation investigators is the revelation that approximately 95 per cent of American households each year engage in a gamble with the weather man for their winter refrigeration. In other words, about 95 of every 100 households use the back porch, the window box, the cellar or the pantry to keep their food fresh and unspoiled, and only five use artificial refrigeration.

"The United States weather bureau has reported that there are on an average only 19 days a year throughout the country when the temperature ranges between 42 and 50 degrees—limits set by the United States department of agriculture for the safe preservation of foods. On other days the temperature either goes above 50 degrees, promoting the growth of harmful molds and bacteria on food, or falls below 32 degrees, when the food is frozen and to a great extent made unfit for use. Food preservation this time of year, due to winter health conditions, really is more important than in the summer."

AUBURN LINE CARS HIGHLY COMPLIMENTED NEW YORK SHOW

"One of the most enthusiastic receptions ever accorded an automobile was given the 1929 Auburns at the New York Automobile Show early this January," says C. W. Doherty, of the Southern Oregon Sales and Service, Medford and Ashland.

"Four Auburn chassis were displayed with some 18 body types. The big closed six was one of the sensations of the show. This car has a 120-inch wheelbase, a 65 h. p. Lycoming engine, four-color internal expanding hydraulic brakes, Loveloy hydraulic shock absorbers, Blue chassis lubrication system, and a score or more of other features found only on much higher priced cars.

"The 8-90 straight-eight came in for an equal amount of attention. It's a four-door sport sedan, has a 125-inch wheelbase, hydraulic brakes, hydraulic shock absorbers, Blue chassis lubrication system, manifold, harmonic crankshaft balancer, low built bodies with fleet lines, and a new achievement in ease of operation. The engine is a 90 h. p. straight-eight Lycoming.

"The new 120 line met with especial acceptance. These models are equipped with a 125 h. p. Lycoming straight-eight engine and have introduced a new level of performance into automobile driving. Wheelbase of these models is 130 inches and the equipment throughout is deluxe, including such advancements as internal expanding hydraulic brakes, hydraulic shock absorbers, Blue chassis lubrication system, Laguna springs, finest quality upholstery, chrome plate and the finest of accessories throughout.

"At the normal driving speeds of 40 to 60 miles an hour their performance is a revelation. There is a four-door sport sedan, a phaeton-sedan and the speedster.

"One of the most talked of cars at the show was the Auburn Cabin Speedster, a daring sport design. It has all the dash and snap of the speedway, yet provides the comforts of the closed car. Lines are long and racy and the car is built to do better than 100 miles an hour. Every line of the design carries out the indication of speed, such as the slanting windshield, bolt slanted rear end of the body. The car stands only 58 inches at the tip peak and is built so low to the ground that the passengers step directly into it without the aid of running boards. The engine is a straight-eight of 125 h. p. while the wheelbase is only 120 inches. The passenger seats are of the airplane chair design and are movable. Body construction is also of airplane cabin design from which the car derives its name."

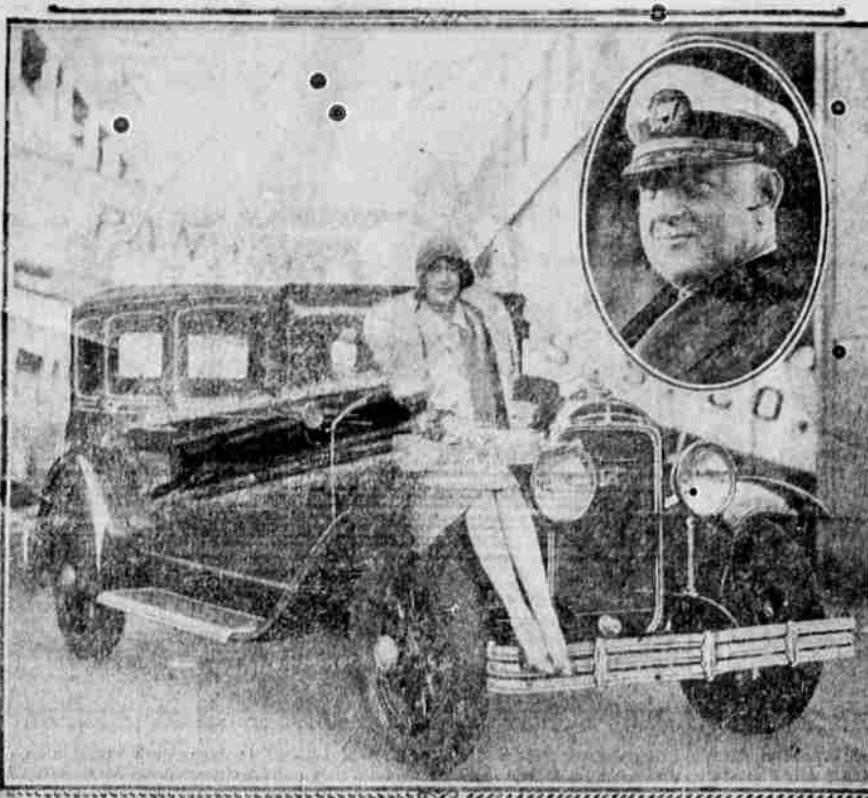
SEA OF CALCIUM GAS ROOMS SPACE

ITHACA, N. Y. (AP)—A vast cloud of gas, lying in space in the northern heavens near the constellation Cassiopeia's Chair, has been found by S. L. Hootbroy, professor in charge of the Puertes Observatory at Cornell University.

The observations were made while working at the Dominion Astrophysical Observatory at Victoria, B. C.

Although the cloud is invisible even through telescopes, the spectroscopic not only revealed its presence, but showed its composition, which is calcium gas. Calcium is the mineral that makes bones hard.

SETTING A STYLE FOR SALVADOR



Captain Henry Stephenson of Panama Mail liner "El Salvador," deputized by Vice-President Vides of Salvador to purchase graduation gift for his daughter, Miss Enriqueta Vides, selects Buick Sedan as most appropriate for her position in Salvador society. Miss Vides, the unknown owner of the stylish new car, is a passenger on the "El Salvador," which is carrying gift to her home in Santa Anna, where presentation will be made.



Poor Comparison

"How's your car running?"
 "Not so good; can't get her throttled down."
 "How's your wife?"
 "She's the same, thank you."
 "She sure is built nice," said the bachelor as he viewed his new car.
 If he calls girls "sweeties," his car is the one with the bugle horn.
 Only Green Wait for Signal
 A traffic light means "stop" when red—But lips that are Mean "Go ahead."

Jaywalking requires two—one to take a chance and one to catch him at it.

Compensation—the roughest roads have the fewest billboards.

A Rehearsal

"Let's run over a few things together," said the automobile instructor to his pupil.
 City Kid: "What are those things on top of the cow's head?"
 Mother: "Those are her horns, darling."
 City Kid: "Let's hear her blow 'em!"

Getting a husband is like buying a car; one has to consider the trade-in value.

A gasoline shortage is predicted by the year 2000. By that time the cars will be so thick they can't move so it doesn't matter.

The worst traffic snail to be caught in, is that from the back seat.

Do You Believe in Signs?

If you do, this one in front of a farm house not a thousand miles away might interest you:
 "No! I have no water.
 I don't know the road to no place.
 I have nothing for sale.
 Just keep going and don't hark!"

There are too many hit and run drivers—something should be done soon to encourage reckless driving.

One thing we positively do not want for a Christmas gift is automobiles. We are giving this out before any one buys one for us.

A Modern Purchaser

"This new model coach," said the salesman, "has just been reduced one hundred and fifty dollars."
 "I don't care anything about the price," protested the prospective buyer. "How much is the first payment?"

The only thing in the way of automobiles nowadays seems to be the pedestrian.

They call him "Jack" because he's always giving flat tires a lift.

Heard that a hoodligger was arrested the other day. It seems he parked his car in front of a fire hydrant.

If all the miles walked by girls coming back from auto rides were added up, they would not reach quite as far as the miles ridden by girls who have never walked home.

Usually the bigger the car the smaller the family owning it.

The other fellow: An automobile driver who is expected to slow down at street crossings.

Copyright, Mass Feature Syndicate.

GROUNDHOGS DON'T ALWAYS HIBERNATE CHRYSLER RED HEAD FOR U. OF W. STUDENTS

Although the tradition still clings, the belief that the groundhog emerged from his hole promptly on February 2 each year has been long disproved. And now comes J. M. Nelson, who has made a study of the little rodent, to tell us that many of the species do not hibernate at all. Here is his account of their habits as published in the Farm Journal.

"There are some which burrow into the soft earth along streams and store their food for the winter months. These are never seen throughout the winter. They are the real hibernators. But there are also groundhogs which make their homes in caves and sinkholes in which they store quantities of food. They may be seen most any time during the winter, when the weather is fair.

"The groundhogs along rivers often make winter homes in places which later are covered with water for days at a time. Sealed tunnels and air-chambers give protection and, while the water may be running overhead, the groundhog will be enjoying his cache of food which he was wise enough to store before he was shut off from the world."

UNIVERSITY OF WASHINGTON MECHANICAL ENGINEERING STUDENTS ARE BEING GIVEN OPPORTUNITY TO STUDY THE FOREMOST DEVELOPMENTS IN MODERN-DAY MOTOR CAR ENGINE THROUGH THE UNIVERSITY'S RECENT ACQUISITION OF A CHRYSLER HIGH COMPRESSION "RED HEAD" ENGINE.

"Washington's recognition of Chrysler as contributing the most outstanding recent development in automotive engineering is directly in line with other national recognition of Chrysler mechanical excellence," says Mr. Henry of the Medford Motor Co., local dealer. "Chrysler is given credit in automobile circles for leading the industry to new heights of engine performance in 1925, after having achieved 1927's outstanding accomplishment in building engines of greater efficiency."

THOMASTON, Me.—(AP) Most of the babies for brooms made in the Maine state broom shop come from the towns of Liberty and Freedom.



Will you needlessly risk the lives of others?

MANY skidding accidents injure pedestrians—MANY people in no way connected with the skidding car. Don't let your car menace others and threaten your own safety as well.

Even on icy roads you can keep your car under control if you use *Pirene* Tire Chains. These chains are sure-footed. They grip tight and cling to the road.

Pirene Cross chains are uniformly case-hardened to withstand modern hard roads.

Get them from your dealer or garage man today.

SEE YOUR DEALER
LITRELL PARTS CO., Distributor
 Medford PYRENE TIRE CHAINS Klamath Falls

BETWEEN WAVELNGTHS

By C. E. Butterfield
 (Associated Press Radio Editor)

Distance has "come back." Secret circuits and other stunts touted as the only reliable means of bringing in signals from 1000 miles or more fall to get the credit this time. Wavelength moving day again that honor.

Ship up to any gathering of listeners, expert or otherwise, in this after-Christmas period, and one will hear discussed the latest in longing feats. Some one-knob dialers have returned to bragging what they did in the previous evening hours, a few showing no hesitancy in saying that an overseas station was in their list.

That period of the past during which quite a few stories were broadcast to the effect that the radio family did not care for distance any more seems not to have cast its shadow before. The present has "gone back" a little further to the days when distance hunting was the prime factor in the purchase or construction of a set.

While the receiver designed to give ultimate selectivity is one that will provide more stations, almost any kind of a set in the congested districts will pick up at least five or six from out of town. When the full advantage is taken by set designers of the broad cast enunciation and its clear channel lanes, in addition to adapting their equipment to the latest tube developments, logs of the 1929 receiver buyers will have a prominent section for other than local transmitter listings.

Present circuit and set designs may do about as good a job of distance fishing as anything the immediate future is to bring, but the radio always lives in the hope that the world will be his broadcast playground through the medium of some engineering marvel.

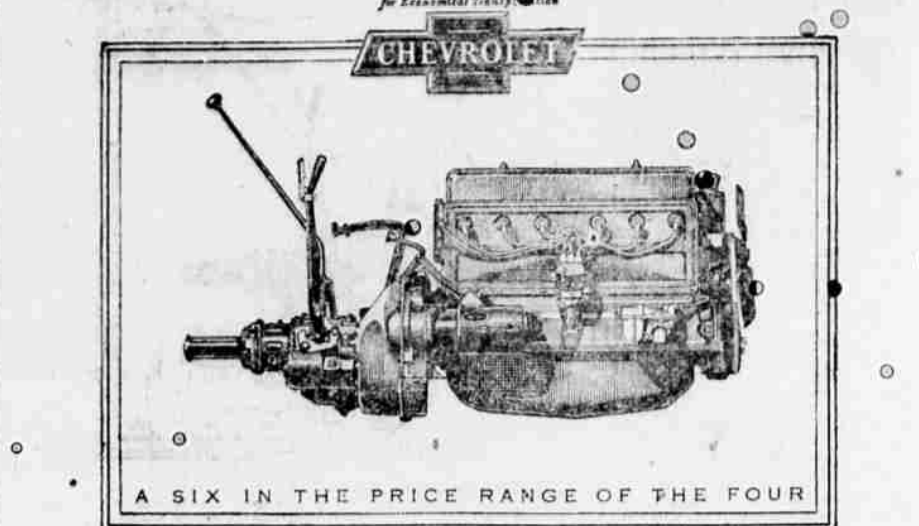
Since the radio receiver became a plug-in device like any other electrical appliance, it seems to be particularly attractive to the rodent.

Nearly every other day brings to light a new story built around the death of a mouse which had crawled into a receiver either for nesting purposes or for a cozy corner. The warmth generated by the AC set may be the principal cause of the migration. Discoveries of the demise are made in various ways, including the non-functioning of the receiver by a short circuit through the animal's body.

Broadcasting stations are not immune from the inquisitive mouse either. One who made its home affixed wandered into the outlying transmitter house of WCAU, Philadelphia. It attempted to run across a condenser, causing a short circuit and stopping the broadcast of a speech.

Spray pumps may be put to good use for disinfecting the stable if equipped with 15 feet of hose, a 5-foot section of iron pipe and a spray nozzle. This will accomplish the job with dispatch and drive the disinfectant into all the cracks and crevices.

Calfes wintered in the range of feed available and give the areas should be fed liberally after youngest calves the best hay being weaned, since they make calves which are stunted never early today being water of the better use of their feed than recover entirely from the effects of Cayan and Casarin rivers swirled about their homes.



Smoothness Never Before Achieved in a Low-Priced Automobile

Of all the exceptional performance qualities resulting from the advanced design of the new Chevrolet Six, none is more impressive than its remarkably smooth operation.

Although the new six-cylinder motor develops 32% more power with correspondingly higher speed and faster acceleration... although it delivers better than twenty miles to the gallon of gasoline—

its outstanding feature of performance is a degree of smoothness never before achieved in any low-priced automobile.

To achieve such remarkable performance in a car of such low price, Chevrolet spent years in development work. Over 100 different engines were designed, built and subjected to over a million miles of testing at the General Motors Proving Ground before the present motor was adopted. The new power plant has many unusual features, such as the new acceleration pump, the new gasoline pump and filter, and the new automatic lubrication of the rocker arms.

The four-wheel brakes have been newly designed to assure positive, quiet action. Steering has been made easier. And the new Fisher bodies with their new lines, new colors, adjustable driver's seats and new appointments represent new heights of style, distinction, comfort and value.

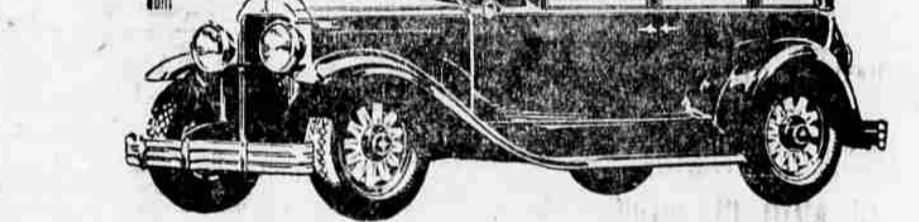
We extend you a cordial invitation to see and drive the new Chevrolet Six. We believe it an experience that every motorist should have—and we want you to know how finely the new Chevrolet Six is built and how smoothly it performs!

The Roadster, \$1251; The Phaeton, \$1251; The Coach, \$1291; The Coupe, \$1301; The Sedan, \$1341; The Sport Sedan, \$1391; The Convertible Landau, \$1721; Sedan Delivery, \$1391; Light Delivery Chassis, \$1401; 1 1/2 Ton Chassis, \$1411; 1 1/2 Ton Chassis with Cab, \$1530. All prices f. o. b. Flint, Mich.

PIERCE-ALLEN MOTOR CO., Inc.

112 South Riverside—Phone 150
 Automotive Shop
 Ashland, Oregon

QUALITY AT LOW COST



Newest of the New five months ago and newest of the new to-day!

Not only instant but countrywide acclaim greeted this great new Buick on its introduction five short months ago!

For Buick was new—new in style—new in performance—new in comfort... And Buick is new today—its quality as unequalled—its leadership as obvious and outstanding as on the day of its introduction!

Buick's new Masterpiece Bodies by Fisher are unrivaled fashions—outstanding favorites.

Buick's triple-sealed Valve-in-Head engine—the most powerful engine of its size in the world provides performance unequalled by any other car.

Newest of the new five months ago—and newest of the new today... winner of the most enthusiastic demand in all fine car history... this magnificent new Buick with Masterpiece Bodies by Fisher!

BUICK WITH MASTERPIECE BODIES BY FISHER

SCHERER MOTOR CO.
 40 North Riverside Phone 73

WHEN BETTER AUTOMOBILES ARE BUILT, BUICK WILL BUILD THEM