

**Steward's**  
**\$1 to \$25**  
STORE.

**New Spring**  
**Dresses**

New frocks flare and dip. Paris has gone back to the time of our grandmothers and borrowed the "Princess lines" for the smartest frocks this spring. It consists of a waist slightly higher and slightly more fitted, and a skirt that flares bewitchingly. In crepes, satins, crepe de chins, and all colors.

**\$15**

**New Spring**  
**Prints**

Dresses in all sizes and colors in this unusual selection.

**\$10**

**Winter Satin**  
**Dresses**

The balance of our winter satin dresses, values up to \$25.00, your choice.

**\$10**

**Wool Slip-On**  
**SWEATERS**



One assortment of all-wool slip-on sweaters in all colors and sizes; \$3.95 value. Special

**\$1.95**

Sale of

**Millinery**

**\$1**

Balance of all our winter hats in stock. Saturday, your choice

**\$1.00**

**Steward's**  
**\$1 to \$25**  
STORE

**CURLY LEAF WILL REQUIRE SPRAYING SOON SAYS AGENT**

Peach growers should be prepared to spray their peach trees within the next two or three weeks if they desire to control curly leaf.

Peach leaf curl or curly leaf is caused by a fungus growth entering the small leaves and shoots at the first growth in late winter and early spring. Later on these infected parts become thickened and distorted taking on a whitish bloom or pubescence; and finally the leaves turn brown, dry up and either fall off or hang on through the season.

Bordeaux mixture 6-6-50 applied during January is the surest control for this disease. Apply the spray thoroughly and a vigorous healthy peach tree will be your reward.

L. P. WILCOX,  
County Agent.

**Special Offer of Tru-Blu Wafers**

In order to acquaint the public more with "the health-giving cookie cake," Tru Blu Vegetated Wafers and the double deck package of Tru-Blu crackers the company is making a special offer during January of a package of both for 37 cents.

These famous wafers have been advertised and displayed in most of the grocery stores and if you have not tried them the company claims you have missed.

Tru-Blu crackers are well known to all eye cramp and have a rich cracker flavor.

See the ad in this issue for the special offer. Good at your Grocer's.

**Daily Meteorological Report**

Friday, Jan. 11.  
Medford and vicinity: Fair, but with local valley fogs tonight and Saturday. No change in temperature. Lowest tonight about 24 degrees.

Oregon: Fair, but with valley fogs tonight and Saturday. No change in temperature.

Local Data	Today	Yesterday
	5 A. M.	5 A. M.
Temperature (degrees)	43	23
Highest (last 12 hours)	52	43
Lowest (last 12 hours)	21	23
Rel. humidity (per cent.)	64	93
Precipitation (inches)		
State of weather	Clear	Clear
Total precipitation since Sept. 1, 1928, 7.13 inches.		
Sunset today, 5:00 p. m.		
Sunrise Saturday, 7:38 a. m.		
Sunset Saturday, 5:01 p. m.		

CITY	Highest Temp. Part 24 Hrs.	Lowest Temp. Last Night	Weather
Baker City	29	8	Clear
Bismarck	38	-10	Clear
Boise	32	14	Clear
Denver	59	25	Clear
Des Moines	26	7	Cloudy
Fresno	42	36	Cloudy
Helena	42	22	Clear
Los Angeles	79	52	Clear
Marshallfield	56	34	Cloudy
Phoenix	66	34	Clear
Portland	42	32	Clear
Red Bluff	52	28	Foggy
Roseburg	46	30	Cloudy
Salt Lake City	32	16	Clear
San Francisco	52	49	Clear
San Fe	34	18	Clear
Seattle	38	32	Cloudy
Spokane	30	24	Cloudy
Walla Walla	24	29	Cloudy
Winnipeg		-22	Clear

L. W. DICK, Meteorologist.

**Brisbane's Today**

(Continued from Page One.)

mally, creating a cancerous tumor. Whence that power comes science does not know. It originates in irritation of the tissues.

This is the richest country in the world, but everything is comparative and real money is scarce. All money circulating in the United States amounts to less than five thousand millions of dollars, about \$1.77 for each American.

Our great wealth, of course, is not in dollars, but in values not yet changed into dollars—mines, mills, oil wells, power. There are two or three men in the country whose property, rightly appraised, would probably show a value not far from five billions.

American farmers have their troubles. Farmers in Japan have worse ones.

When our farmers complain government at least MAKES PROMISES.

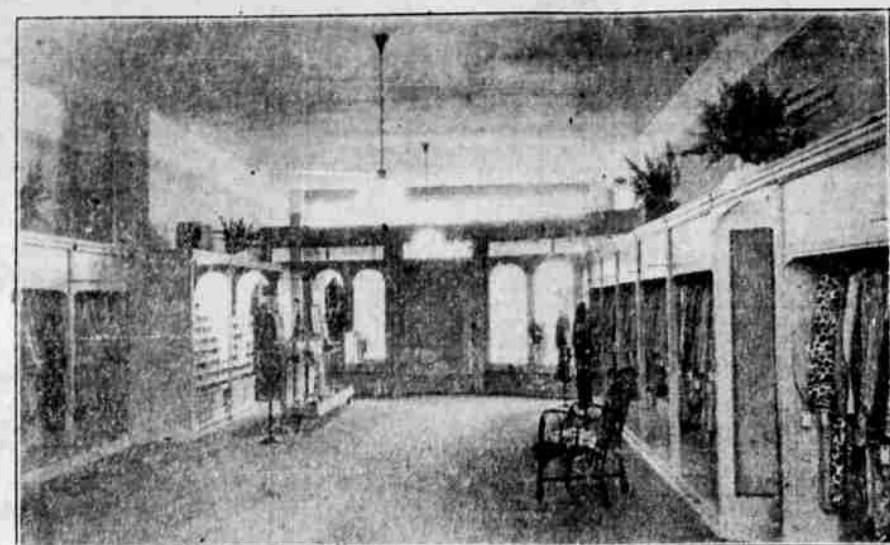
Wednesday when thousands of Japanese peasants marched to express dissatisfaction, 40 were shot dead and many wounded.

An American may become head of the Salvation Army forces throughout the world in place of General Booth, who has ruled from London. Supporters of General Booth see the power of "American gold."

The Salvation Army in America has \$43,000,000 worth of property, and where money is power is.

Those that have contributed to Salvation Army funds are delighted to know that the army is doing so well. Some may wonder whether or wisdom was shown in not devoting more of the \$43,000,000 to the poor, and less to property.

**Many Attend Cinderella Shop Opening Thursday**



People from all parts of southern Oregon attended the opening of the Cinderella shop, Medford's newest exclusive women's store, yesterday. The accompanying photograph shows a partial view of the beautiful interior. The Cinderella Shop is located at the corner of Eighth street and Central avenue, opposite the Jackson Hotel.

R. C. Hadley, head of R. C. Hadley, Inc., owners of the Cinderella store organization, who has been in this city during the past week arranging for the opening of the Medford store, will leave tonight for Portland.

**MRS. ROY NICHOLS TO HEAD BIBLE CLASS**

Owing to weather and health conditions the attendance at the monthly class meeting of the Ladies' Berean Bible class was somewhat restricted on Wednesday afternoon when they met at the home of Rev. and Mrs. J. M. Johnson. There were 20 adults, besides several children present. The class averaged 30 in attendance throughout the entire year of 1928. Second Tim. 2:15. is

**EVANGELIST HOPKINS CONDUCTING SERVICE**

The revival services of God, corner of North Holly and Haven, are having good meetings. The public is urged to join the crowd tonight and hear the old-time religion preached from the Word of God.

"The Impossibility" No service Saturday night. Continued Monday night at 7:30. Rev. F. W. Hopkins is the evangelist.

**Piggly Wiggly**

Maxwell House Coffee— 1-pound tin	50c	Palace Peaches— No. 2 1/2's, per can	20c
Tomatoes—tall cans— 3 cans	25c	Iowa White Corn— No. 2's, 2 cans	25c
Fancy Rosedale Apricots— No. 2 1/2's, per can	22c	Iowa Golden Corn— 2 cans	29c
Pear Butter— Large can	20c	Goody-Goody Peas— No. 2's, per can	15c
Sugar— 10 Pounds	62c	Corn Flakes— 3 Packages	25c
Utah Ungraded Peas— 2 cans, No. 2 1/2's	25c	Bread— 3 Loaves	20c
Campbell's Tomato Soup— 3 cans	25c	Extra Large Oregon Walnuts— 35c per lb., Saturday, per lb.	30c
Market Day Raisins— 4-lb. package	29c	California Home Catsup— 18-ounce bottle	23c
Market Day Raisins— 2-lb. package	15c	Nally's Mayonnaise— Quart size	65c
California Grapefruit— 4 for	25c	Piggly Wiggly Flour— 40-lb. sack	\$1.89
P & G Laundry Soap— 10 bars	37c	Sliced Pineapple— No. 2 1/2's, 2 cans	43c
Carnation Milk— 6 Tall Cans	57c	Salted Peanuts—Fresh— Per pound	19c
A Good Broom— Saturday	49c	Imported Norwegian Sardines— 2 cans	25c
Gloss or Corn Starch— 3 packages	25c	French Mix Candy— Per pound	19c

Just received a fine lot of Klamath Netted Gem Potatoes, commercial grade, average weight 110 pounds per sack **\$1.37**

**PIGGLY WIGGLY MEAT MARKET**

SPECIALS	
Fresh Side Pork— Per Pound	20c
Beef Short Ribs— Per Pound	17 1/2c
Beef Pot Roast— Per Pound	22c
Hams—half or whole— Per Pound	30c

We Deliver Phone 1236

**BUY WHOLESALE**  
**Save the Merchant's Profit**  
**Open Saturday**

We will sell for cash direct to the consumer in reasonable wholesale quantities—We invite you to come in and buy what you want.

<b>Flour</b> Klamath milled — One sack or more — A guaranteed flour at a wonderful price. 49 Lb. Sack	1.45	<b>Milk</b> Borden's — the best milk. 48 large cans to case. Case	4.60
<b>Pork and Beans</b> Van Camp's Pork and Beans— A wonderful value. 12 Medium Cans	1.10	<b>Corn</b> Iowa Sweet Corn — A very fancy pack. 12 Large Cans	1.15
<b>Soup</b> Campbell's Best Soups, assorted kinds to suit yourself. 12 Regular Cans	1.10	<b>Soap</b> Crystal White—100 large bars to case. Per Case	3.75
<b>Tomatoes</b> Fancy Rogue River fancy solid pack Tomatoes — Canned in the Rogue River Valley. 12 Large Cans	1.40	<b>Hominy</b> Van Camp's Eastern Hominy, Large No. 2 1/2 cans. 12 Cans	1.15
<b>Jello</b> You know the quality, and it's cheap. 12 Packages	.90	<b>Baking Powder</b> Calumet — the best baking powder at a cheap price. 10 Pounds	1.19

**Wholesale Fruits**

In connection with our wholesale store we will operate a complete and up to date fruit and vegetable market, and will sell in any quantity at our wholesale prices.

<b>Grapefruit</b> Fancy Florida Fresh Grapefruit—first class in every way. Medium size. Each	.05	<b>Bananas</b> Large ripe fruit — A wonderful value. 4 Pounds	.25
<b>Oranges</b> Extra Fancy Southern California Sweet Naval Oranges. 2 Doz.	25c	<b>Eggs</b> Local fresh eggs, standard size. Guaranteed. Dozen	.35

**WHOLESALE STORES**

123-127 West Main St.  
Across Main Street  
Opposite Weeks & Orr Furniture Store