

MAJORITY AUTO ACCIDENTS FROM FLYING GLASS

When the new Model A Ford automobile was being designed, one of the factors which was given most careful attention was that of building into the car every possible safeguard against accidents.

One of the most striking discoveries in the analysis of automobile accidents was that 65 per cent of all the injuries resulting from motor car accidents were being caused by flying glass.



Things are never just right, for the best informed man in town seldom talks and the girl with the best looking knees doesn't go out on windy days.

Free State Patrol: "Have ye yer permit on ye for drivin' the car?" Motorist: "I have not. Are ye wantin' to see it?"

Modern version: "And there we will park, way out in the dark, and let the rest of the world go by."

Service Manager: "You say your car runs like a top." Motorist: "Exactly—it runs a little while and then stops."

It's a mighty short road that has no detour these days. She: "Did I ever show you the place where I hurt my hip?" He: "N-no."

There isn't a doubt that America's greatest uplift movement is that which is done with the automobile jack.

Personally we would never buy an automobile on the installment plan and our conservative way is to borrow the money and pay spot cash.

Young Lady Motorist: "It's snowing and sleeting and I'd like to buy some chains for my tires." "I'm sorry—we keep only groceries."

"How annoying! I understood this was a chain store." Profitable Absent-Mindedness: A western physician, driving along a lonely road, picked up a "hitch-hiker," according to a news story.

For ten miles he and his companion, a likeable young fellow of about twenty-five, discussed everything of mutual interest. Then the doctor reached for his watch. It was gone.

Whipping out his gun, he is alleged to have covered the youth and backed. "Hand over that watch!" The young man did so quickly, with a surprised look—then ran down the road!

The doctor's wife asked him that night, "Didn't you miss your watch today? You left it this morning on the dresser?"

Auto Mis-haps: Bill always claimed the right of way. But now he's out of luck: He tried to take it yesterday. From a ten-ton gravel truck.

New York American: And when it comes to sad mishaps, John's lost his nerve of steel. He's handgaged up—the car he had had a woman at the wheel.

Fare: "I'm sorry, old man, but I am broke; you can't get blood out of a turnip you know." Taxi Driver (rolling up his sleeves): "Yeah, feller, but you ain't no turnip."

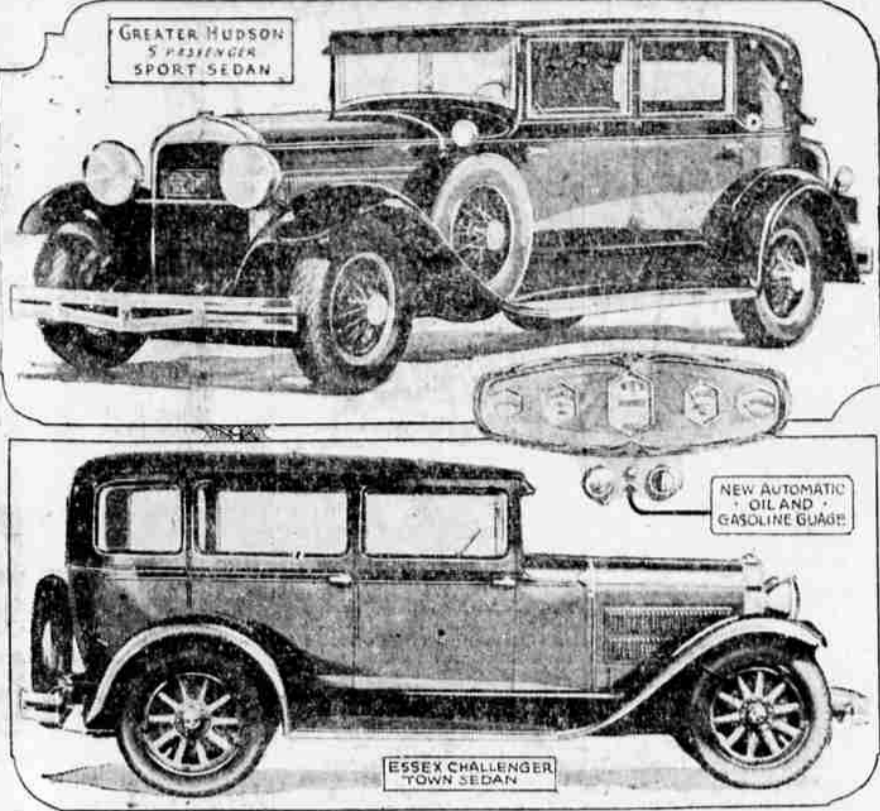
After the amateur mechanic gets through fixing his car is sure the time it needs it.

"A one-eyed automobile can do a lot of damage, and a one-armed driver can do more."

There is only one trouble with asking the man who owns one. We never could find one who had paid the final installment.

If there is such a thing as misreading, it should be a great help.

Leaders in Hudson-Essex 1929 Line



Among the pre-show announcements which have been made in the automotive world is that of the Hudson Motor Car company.

Radical engine improvements totaling 76 on the 1929 Greater Hudson and 64 on the Essex—The Challenger—involving 800 new parts, have increased the power and speed of both lines while a perfect carburetion has actually decreased the fuel consumption.

when the driver in front holds out his hand. It is not a bad idea to also do your Christmas hinting early.

Copyright, Moss Feature Syndicate.



By C. E. Butterfield (Associated Press-Radio Editor) A new sea has dawned in radio, and now is well nigh at its zenith.

Instead of a kit and parts buying radio public, Santa Claus is to be welcomed this year by a big listening majority which trends its

To the better engines have been added redesigned bodies for all of the models of the 1929 line in addition to eight wholly new body types in the Greater Hudson and two in the Essex—Challenger.

Hudson now has 14 on two chassis and Essex eight. Quality body lines and color were especially stressed in the design of the new cars and not until they were put into production was it found that a price reduction could be made. Improved manu-

facturing processes have materially cut costs. The announcement is, according to the company, a challenge to the industry "to build better cars."

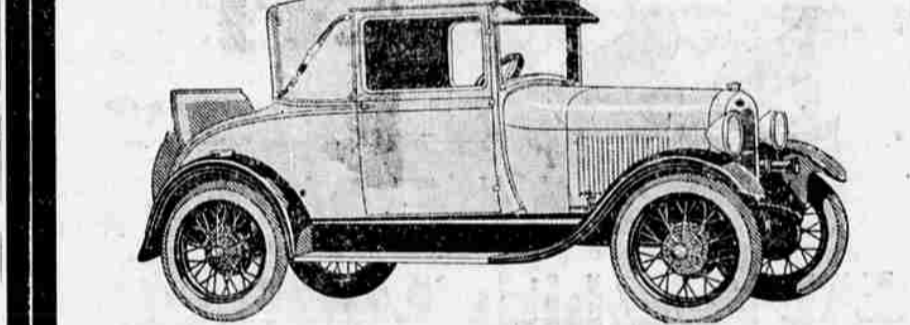
The Essex, say the manufacturers, is presented to the public as "The Challenger" in that manner. Production schedules for 1929 call for an output of Greater Hudson Super Sixes and Essex "Challengers" during the first six months of the new year equal the entire output in 1928.

must be found is some way to present each portion of the view in rapid sequence before the transmitter and to take the sequence of impulses on the receiver and sell them up to form an image. When that can be done, television will have arrived.

This year's radio market has seen one of the biggest turnovers in complete receivers, factory constructed and otherwise, that the industry has experienced.

Despite the decrease in the size of their public, the parts manufacturers have not suffered. Most of their output is going into the receiver factories to reach the "consumer" by a route that brings the same results.

BOSTON—(AP) Boston has one lunch-counter restaurant that employs 1000 persons and feeds 25,000 patrons each day. The owners plan to establish another unit.



We Can Deliver YOUR NEW

Ford

To You in a Few Days

Order Now for Prompt Delivery

C. E. Gates Auto Co.

Pacific Highway at Sixth

Phone 141

HOME EDUCATION

'The Child's First School is the Family'—Froebel Issued by the National Kindergarten Association, 8 West 40th Street, New York City. These articles are appearing each Sunday in the Mail Tribune.

WHEN ACCUSATION DOES NOT PAY Pauline Herr Thomas

Eleanor had been asking repeatedly for a little bell—"One like Miss Marx has in school, Mother, Ruth and I want it when we play school."

Mother had promised to get it whenever Eleanor was good, but had failed to do so just as often. One day Mother and Annie were sitting in the kitchen.

Mother's place at the sink over the next door back yard where Eleanor was playing in the sand box with Baby Louise. Of a sudden she saw Eleanor pick up something and come running in-doors with it.

Her suspicions aroused, she said to Eleanor, "What have you there, dear?"

"Oh, Mother," said Eleanor, "see what I found in the street—a bell just like I wanted, to play school! It's mine if I found it, isn't it, Mother?" she added, when she saw Mother's face and read the mistrust there and the possibility of refusal.

New Auntie May had been drying dishes and she had seen all too, sensing that Mother was about to accuse Eleanor, she hastily made a decision.

"Why, let's see, Eleanor dear," she said. "That is a nice little bell you found. I wonder whose it is, don't you? Some little girl will be so sorry to lose it, won't she?"

"But it's mine if I found it," the began Eleanor again, persisting in her misrepresentation at the re-

newed fear of losing the prize. "Well, of course, if you advertised first like big folk do and didn't find the owner, then it would be yours," said Auntie May.

"What's advertised," Auntie May?" asked Eleanor, intrigued in spite of herself.

"Well, one day I found a pretty watch on the street just like I'd always wanted, but I said to myself, 'Now someone has lost this pretty watch and maybe is crying for it, so I won't keep it. I'll see the man who prints the newspaper "Mr. Editor, please print in your paper that I have found a watch and that if anyone has lost it, I shall be glad to return it. That's what you call advertising."

"Did anyone come for the watch, Auntie May?"

"Yes, a dear little girl came with her mother and they were both so happy because I found it. Wouldn't you like to make the person happy who lost this nice little bell?"

"Yes, Auntie, but we must advertise—advertise."

"Well, of course, we can't advertise in the paper, but let's do the next best thing. Let's go to every house on the block until we find the owner."

So out they went! Eleanor insisted on trying Baby Louise's house first, at which Auntie May smiled to herself. Of course, Baby Louise giggled happily over the bell and her mother thanked Eleanor warmly "for returning

Historical Facts of Rogue River

Material in this article was obtained from the recent book "Oregon Geographic Names" by McArthur.

Rogue river is in Curry, Douglas, Jackson, Deschutes and the extreme northwest corner of Klamath county at Boundary Springs near the northern boundary of Crater Lake national park. On December 28, 1904, Max Peckel, a well known prospector, discovered the mine to the French word "rogue" on account of the alleged red color of the water during flood season. Harvey W. Scott, editor of the Oregonian, replied to Peckel in the following sharp, caustic language:

"This is a beautiful purely so, though the Rogue story is old. There would have been reason for calling the Klamath river Rogue river or Red river, for its waters are much discolored by the marshes of the lake basin which it drains. But Rogue river is one of the dearest of streams, and even in flood its waters are not red. An old French name has been mentioned, though no such name is known now to be in existence—wherever the Klamath and Rogue rivers are united

and called Rouge-Clamet, or Red Klamath. But Rogue river, as an individual stream, has been known by its present name ever since white men first visited the country. And Bishop F. N. Blanchet's account of the Catholic church in Oregon says the French were first to call it by this name. The Indians there were a peculiarly troublesome lot," he says. Blanchet, "the name was Coucine, (the Rogue) and not La Riviere aux Coucine (the Rogue river) was given the country by the men of the brigade. The actual truth is that the French called it Rogue river themselves. Everything is against the assumption that it once was Rouge river—changed by the Indians to Rogue river. On the theory that their French couldn't spell."

AMERICA LEADS IN FINE WATCH MAKING

NEW YORK—(AP) Watches and clocks produced in the United States this year will have a value to exceed \$30,000,000, almost equal to the combined output of Switzerland and Germany, the closest competitors. Production of timepieces in this country, jewelers say, has more than doubled in the last 10 years. After meeting its own domestic demand, the United States last year exported watches and clocks to the value of four per cent of the total output, an increase of six per cent over the previous year.

Mail Tribune ads are read by 30,000 people every day.

Now on Display in our Showroom!

Today you can see the most sensational automobile ever introduced—The Outstanding Chevrolet of Chevrolet History, a Six in the price range of the four!

Today, this amazing new automobile is on display in our showrooms and we cordially invite you to come in for a personal inspection!

When you lift the hood and see the new six-cylinder valve-in-head engine you will realize that a new era has dawned for the buyers of low-priced automobiles. Representing four years development and testing, this new power plant is a marvel of advanced design. At every speed it operates with that delightful smoothness which everyone demands today in a modern automobile. It develops approximately 32% more power than any previous Chevrolet engine. It displays sensationally greater speed and faster acceleration. And yet, despite this brilliantly improved performance, it maintains Chevrolet's worldwide reputation for economical transportation by delivering better than an average of twenty miles to the gallon of gasoline!

Great Array of New Features Matching this spectacular advance in performance is the greatest array of new features Chevrolet has ever announced.

The big, new four-wheel brakes are exceedingly quiet in operation. The new two-beam headlamps with foot control dimming device were never before available in Chevrolet's price class. And so on throughout the entire chassis, you will find feature after feature previously demanded in the finest of automobiles and now offered on the Outstanding Chevrolet in keeping with Chevrolet's policy of constant progress.

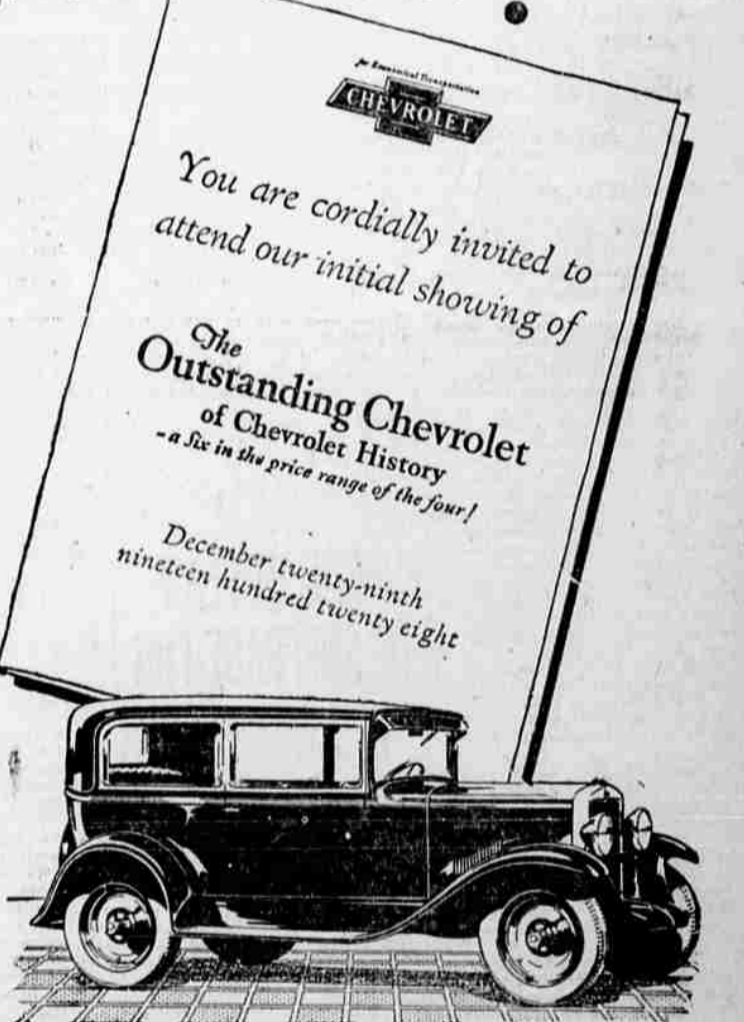
Distinctive New Beauty But, however impressed you may be by the mechanical superiority of the Outstanding Chevrolet, your admiration will reach even greater heights when you study the car's distinctive beauty—

—the marvelous new Fisher bodies represent a masterful example of artistic coachwork. Never have beauty, comfort, convenience and staunch construction been more skillfully combined in the bodies of any automobile!

So we urge you to come in today and inspect this outstanding new car.

Price list for Chevrolet models: The COACH \$595, The ROADSTER \$525, The Phaeton \$525, The Coupe \$595, The Sedan \$675, The Sport Cabriolet \$695, The Convertible Landau \$725, Sedan Delivery \$595, Light Delivery Chassis \$400, 1 1/2 Ton Chassis \$545, 1 1/2 Ton Chassis with Cab \$650.

All prices f. o. b. Flint, Michigan



Partial List of Outstanding Features

- New six-cylinder motor, valve-in-head type, fully enclosed. New automatic lubrication of rocker arm mechanism. New fabric camshaft gear. New heavier crankshaft statically and dynamically balanced. New re-inforced piston pins. New hot-spot manifold. New AC gasoline pump with filter replacing vacuum tank. New type AC air cleaner. COOLING SYSTEM New type thermostat cooling system control. New water temperature indicator on dash. ELECTRICAL EQUIPMENT New two-beam headlamps with foot control dimming device. New parking lights inside head lamps. New prismatic headlamp lenses. New theft-proof Electrolock. New semi-automatic spark control. New waterproof spark coil located beneath coil. CHASSIS New self-adjusting, single plate, dry disc clutch. New smooth sliding 3-speed transmission with vanadium steel gears. New solid shaft type steering column. New flat type, slender rim steering wheel with large horn button in center. New and more efficient muffling system. New and more complete Alemite chassis lubrication. New rubber-on-steel pedal enclosures. New larger gasoline tank at rear—11-gallon capacity. New, smaller, smarter wheels with full balloon tires.

Come in and see these Beautiful New Cars on display in our showrooms

PIERCE-ALLEN MOTOR CO., Inc.

112 South Riverside—Phone 150

Automotive Shop Ashland, Oregon

QUALITY AT LOW COST