

## Today

By Arthur Brisbane

**\$4,807.36 to \$1,000,000.**  
**The King's Blood Stream.**  
**No More Ice Age.**

Real estate dealers, old and young, paste in your hats:

One hundred years ago a small piece of land, part of the old Botanical Gardens in New York, was bought for \$4,807.36. The land, three blocks, is on Fifth avenue.

John D. Rockefeller Jr., has just secured that piece of property for \$100,000,000, an increase to make a good single-taxer shudder.

Mr. Rockefeller will use part of the property for a new opera house, to be built in a fashion to allow students and others that have musical talent but no diamond necklaces, to see and hear.

The money goes to Columbia college, which now owns the land.

That probably reconciles Mr. Rockefeller to so large an investment.

He inherits from his father, who gave tens of millions to the University of Chicago, an interest in educational enterprises.

The King's condition worries his doctors once more. Actinic rays, artificially produced, stimulating the blood's white cells to activity, have worked wonders.

But they must work with such blood as the King has. That blood is tired, poisoned by the invading streptococci. Transfusion of young, energetic blood, at intervals of three or four days, in small quantities, should have been resorted to.

Dr. Leopold Stieglitz, a distinguished physician of New York, could tell the King's doctors of a recent case in his practice in which a blood infection, almost invariably fatal, caused by the streptococcus mocosus entering the blood stream from the mastoid sinus, was cleared up as though by miracle in a few days, thanks to blood transfusion.

Follow the discussions of 5,000 scientists, gathered in New York, and gain wisdom.

The various ice periods made us what we are largely. Chasing living creatures from the north toward the equator they mixed up the races of men and animals.

We have seen the last ice age, probably shall never have another, and should be grateful for those we have had. They made men use their brains and drove them into caves to escape the cold. There, sitting around a smoky fire, primitive man got acquainted with his wife and children. That civilized him, and permanent marriage started.

The ice age started the clothing business. This is not, as was formerly believed, a young planet only 500,000,000 years old. It is at least 1,000,000,000 years old. This is proved in many ways, among others by the amount of salt that streams and rivers have washed into the ocean during the billion years.

Herbert Hoover is at work on his inaugural address, a document important to the whole world. For the first time since George Washington, the president is to be an engineer, and one who knows

(Continued on Page Four).

# BIG FRUIT PLANT TO BE ERECTED HERE

## S. O. S. TO HAVE NEW BUILDING

**Largest Cold Storage Pre-Cooling and Packing Plant in Southern Oregon to Be Built by Growing Local Concern—Work to Start in February—To Cost \$100,000.**

Announcement was made Saturday by the Southern Oregon Sales Inc., of plans for the construction of a pre-cooling, cold storage, and packing plant, to cost \$100,000. Work will start February 1, and the plant completed a month before the opening of the next fruit picking season in this valley.

The site of the new industry will be on the north side of Stewart avenue and the Southern Pacific railway tracks, within the city limits, and diagonally across from the county fairgrounds, and within easy access of the Pacific highway. The plant will be erected upon a five acre tract, providing ample room for future expansion. The building will be 270 feet long, and 125 feet wide, upon property owned by Leonard Carpenter, president of the concern.

The structure will be three stories high, modern in every detail, and equipped with the latest fruit industry machinery. Among the innovations will be a packing machine, capable of packing 20 cartons daily. Through the use of this machine, the boxes are stacked and stripped, and not again disturbed until the car is loaded, thus eliminating all bruising of the fruit.

There will also be installed two large hydro-electric elevators of large capacity, for the carrying of fruit and material from floor to floor. Among the features will be a cafeteria for the use of the employees, and emergency dressing rooms, and rest rooms for women workers, and smoking rooms for men employees. Ventilation, lighting and sanitation details will be of the latest and highest type.

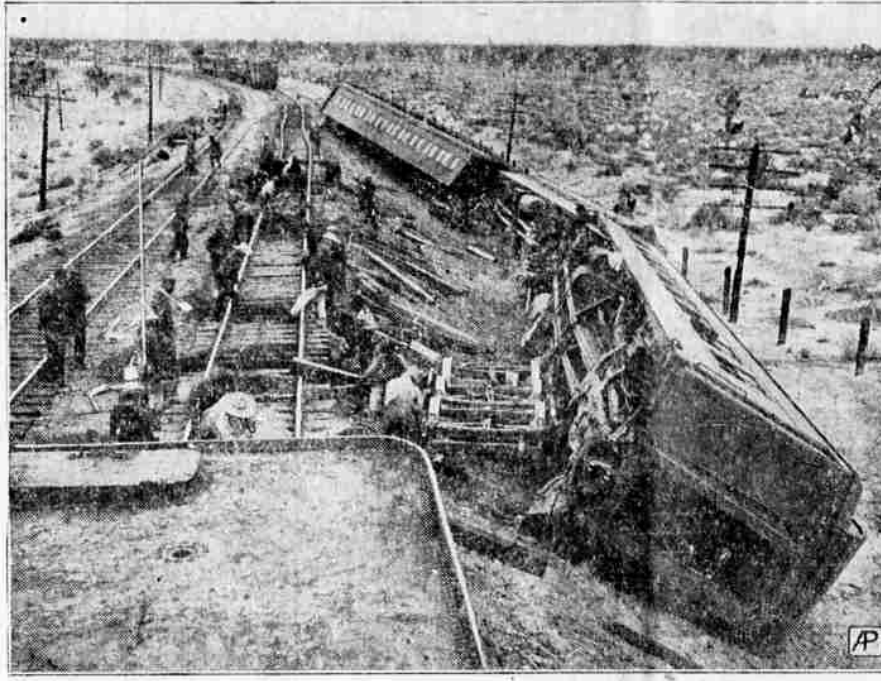
The plant when completed will have a capacity of 20 cartons per day, and the cold storage unit will have a capacity of 200 tons. Trackage facilities for spotting 20 cars at a time will be available.

A. S. V. Carpenter, is chairman of the building committee, under whose direction the plant will be constructed. The board of directors of the Southern Oregon Sales, Inc., are: Leonard Carpenter, president of the concern; A. S. V. Carpenter, secretary; Gordon Verbeke, vice president; Channing Kealy, treasurer; and H. Harding Egan. It was announced that Paul Scherer, would be general manager of the new property, and that Jack Spaulding of New York, sales manager and eastern representative would continue in that capacity.

## PORTLAND AREA GAS PRICE WAR GAINS IN VIGOR

PORTLAND, Dec. 29.—(AP)—A gasoline price war that has been raging for several days in the Portland area among independent dealers, broke out with new fury today along a widespread front. Quotations at service stations ranged from 21 1/2 cents, the standard price to 17 1/2 cents. It is estimated that sales were being made in town as low as 15 cents, but this report could not be authenticated. Dealers were taking no part in the selling conflict and all service stations operated by Standard, Union and Shell were selling motor fuel at the accepted price of 21 1/2 cents a gallon. From 17 1/2 cents the price ranged upward to 21 1/2 cents, dealers selling at 20 1/2 cent mark. Although the predominating figure was 20 cents. A number of dealers declared they were "meeting competition," while many others said they were selling at 20 cents and would close their shops before they would drop to a lower figure.

## DISCHARGED EMPLOYEES BLAMED FOR TRAIN WRECK



Three of the five derailed cars of the Santa Fe "Missionary" Los Angeles to Chicago train, in which two passengers were injured. The wreck was attributed by railroad officials to revengeful former employees who are alleged to have wrecked a rail.

## STORM HEADED THIS WAY; SNOW HITS HIGHWAY

**Ocean Disturbance Shunted North and Rain Predicted—Motorists Must Use Chains Between Weed and Dunsmuir Account of Mud Slide.**

SAN FRANCISCO, Dec. 29.—(AP)—A storm that made its way in from the Pacific yesterday and threatened to demolish central California on Sunday has been shunted towards the extreme northern section of the state, the weather bureau announced today. The outlook tonight "was for fair weather Sunday in California, unsettled weather in Oregon and Washington with a possibility of further rain west of the Cascade mountains."

PORTLAND, Dec. 29.—(AP)—The Stoughton pass in Washington, the principal road across the Cascade range north of the Columbia gorge, was closed today by heavy snowfall. The closing of the mountain route, reported by the state motor association here, will necessitate a change in the travel habits of many motorists. The Pacific highway is now open on the Siskiyou mountains, the motor association reported tonight. The slide which occurred yesterday near Dunsmuir has been cleared away. Road conditions here are such, however, that driving must be slow to be safe. Motorists were advised that the use of chains is imperative between Weed and Dunsmuir.

## WOMAN OFFICIAL FACING CHARGES

REDWOOD CITY, Cal. Dec. 29.—(AP)—A complaint charging six counts of embezzlement and two counts of failure to turn over city collections to the treasury was sworn out against Miss Nettie A. Willis, former city clerk of San Bruno, by Edward J. Maguire here today. Maguire went to Berkeley to seek a warrant for her arrest. Miss Willis, who was city clerk for 17 years, was defeated for reelection last April. An audit of her books disclosed a supposed shortage of \$2,379 and a civil suit was filed against her for that amount. In an answer to the suit Miss Willis made a general denial that there was a shortage.

## DEATH, CASTOR OIL AND EXILE SIN IS HOKUM; SCIENCE HOLDS FOR VIOLATORS DOGMA FLAYED

**Unusual Tortures Suggested By Contestants for Distant Prize—One Favored Hanging By Tongue from Airplane, and Woman Favored Wholesale Poisoning.**

NEW YORK, Dec. 29.—(AP)—Tortures varying from a dose of castor oil to exile on St. Helena and electrocution were recommended for liquor law violators by 699 dry enforcement competition, contestants in the W. C. Durant \$25,000 prize contest, which closed today in Washington with a possibility of further rain west of the Cascade mountains.

Other solutions for the prohibition enforcement problem were "a city which wall about any man found drinking," and a "smack" machine for drinkers and bootleggers. Flogging, hanging and electrocution were frequently urged. One contestant, on the other hand, proposed that liquor be distributed free so that there would be "no lure left."

## MR. COOLIDGE TO FLASH GREETING

NEW YORK, Dec. 29.—(AP)—The National Broadcasting company and the Columbia Broadcasting system today announced that President Coolidge would deliver a New Year's greeting over their combined coast to coast networks at 9 o'clock Monday evening, eastern standard time.

## COSHOW WILL BE CHIEF JUSTICE

SALEM, Dec. 29.—(AP)—Justice Coshow will become chief justice of the Oregon supreme court next Wednesday, according to an announcement made today by the clerk of the court. Justice Coshow will succeed Chief Justice Hand who will serve two years. Justice Coshow is a democrat and was appointed to the supreme court bench by Governor Pierce. He is the first democrat to succeed to the office of chief justice since 1878.

# A MILLION FOR ROADS IN OREGON

**Federal Aid Apportioned for Coming Year—Highway Board Makes Biennial Report Showing Progress and Expenses in Extensive Program.**

WASHINGTON, Dec. 29.—(AP)—Apportionment of \$78,125,000 to the states has been made by the secretary of agriculture as federal aid in road construction for the fiscal year which begins next July. The funds will be expended in accordance with past procedure, the cost of construction on roads designated as part of the federal system to be borne almost equally by the states and the federal government.

During the last fiscal year improvements were completed on 8,184 miles of federal aid road which had not been previously improved, the secretary of agriculture announced in connection with the new apportionment. A advanced stages of improvement were completed on 2,911 miles. Oregon is to receive \$1,191,988.

SALEM, Ore., Dec. 29.—(AP)—The close of the present year will complete the twelfth year since the organization of the state highway department as now constituted, says the biennial report of the commission, made public today. In that period the gross expenditures of the commission have been \$118,523,000 of which \$13,578,181.63 was county funds, \$11,670,376.29 federal funds, \$518,284.41 from miscellaneous sources, and \$93,456,779.80 was state funds. Of the state funds \$22,570,995.54 was used in the payment of principal and interest on bonds.

The state highway system is now 4368.3 miles long, of which 3727.7 miles are improved and only 644.6 unimproved. Paved surfaces cover 895.4 miles. This does not include the forest roads on the state system, which are constructed under the supervision of the United States bureau of public roads, which reports a total of 442.3 miles of crushed rock or gravel surfacing and 503 miles of grading. Also by special federal appropriation three miles of bituminous macadam and 12 miles of oiled macadam have been built on the state highway system inside Crater Lake national park.

During the biennium now coming to an end the total amount spent, including cooperative county payments but excluding market roads, was \$29,531,687.18, of which state funds totaled \$17,449,814.79, county \$1,362,365.17, miscellaneous \$85,605.47 and federal \$1,693,957.84.

The construction and improvement program of the two years totals 1263.1 miles, of which there was less than one mile of pavement. Government improvement totaled 146.7 miles and county work 29 miles.

An extensive program of road widening and straightening is being followed, including the Pacific highway between Canemah and New Era, and Multnomah county highways leading out of Portland. Government improvement totaled 146.7 miles and county work 29 miles. The total in state highway bonds sold was \$35,709,990 of which \$5,983,250 has matured, leaving \$29,726,740 outstanding. During the last two years \$109,182.12 has been used in the acquisition and development of state parks along the highways, the largest expenditure being \$28,923.40 at Emigrant Springs on Old Oregon Trail. For market road purposes during the biennium \$2,235,023.81 was raised by state levy and \$2,469,786.86 by county levy. Using balances on hand at the beginning of the period and funds from other sources the total market road expenditure was \$6,659,623.42. Because of the greater wealth of Multnomah county, as compared with other counties, the market road law provides that no county shall receive from the market road fund more than 10 per cent of the total market road levy of the state, any surplus over that amount being apportioned to the other counties in the two years, \$659,128.47.

# HEALTH CHIEFS OUTLINE PLANS TO COMBAT FLU EAST WINS WITH EASE FROM WEST

**All States Unite For Prevention of Epidemics—Peak of Present Seige Reached—Seventeen New Cases in Portland Reported.**

WASHINGTON, Dec. 29.—(AP)—Health officials of all the states and ten other outstanding scientists have been invited by the public health service to attend a national conference, probably in January, for the purpose of devising methods of controlling the present influenza epidemic and others in the future. The invitations, sent by telegram have already brought acceptance from 46 state and city officials, three specific purposes of the conference, as outlined by officials of the public health service, are: To emphasize the necessity for additional research on influenza. To clarify and standardize information on the disease which is to be submitted to the public during epidemics. To assist in completion of plans for an extensive field study of the present outbreak.

Statistics of the public health service declared today that for the country as a whole the peak of the present epidemic has probably been reached, but that this general average seems started in western, mountain and north central states while the wave has "scarcely begun" in New England. When the health conference is convened, public health officials will submit to its plans for a nationwide survey of conditions to be executed on a house-to-house canvass basis and involving intensive laboratory studies.

PORTLAND, Ore., Dec. 29.—(AP)—Seventeen new cases of influenza and two deaths from the disease were reported to the city health office today. There are now a total of 763 cases of influenza on the city records.

# OHIO HUSBAND IS ACCUSED AS MORAL SLAYER

**Conviction of Indiana Klan Leader For Death of Girl Precedent for Charge—Inspired Wife to Commit Suicide After Killing Lover.**

CANTON, Ohio, Dec. 29.—(AP)—A preliminary hearing will be held Monday for Wilbur O. Heldman, alleged "moral murderer," of his 21-year old wife Margaret, who he said shot and killed Vernon E. Fearn, 35, Canton coal dealer. Frank Switzer, attorney for Heldman, demanded the hearing to force the state to show what evidence it has against the 37-year old Lorain furnace salesman who is being held in the county jail. Regardless, however, of the outcome of the preliminary hearing, evidence against Heldman will be submitted to the Stark county grand jury which convenes January 7, according to Coroner J. C. McQuade, who filed the murder affidavit against Heldman yesterday. More than a dozen witnesses who have testified in the investigation of Mrs. Heldman's death will be called before Justice of the Peace Donald Smythe, before whom the hearing will take place. Some of them, authorities have indicated, are expected to testify that Heldman threatened his wife and by his treatment of her drove her to commit suicide. Coroner McQuade has pointed out that D. C. Stephenson, former Ku Klux Klan leader now serving a life sentence in Indiana, was convicted of the death of Miss Madge Oberholzer when it was shown he refused to obtain medical assistance after the girl had taken poison. Stephenson was convicted for inhuman treatment that led to the girl's death and the coroner said he expects to set forth a parallel in Margaret Heldman's death.

# EAST WINS WITH EASE FROM WEST

**Score 20 to 0 Victory Before Throng and Regain Lost Prestige—Western Offense Lacks Punch and Seldom Invades Invaders Territory—Result Never in Doubt.**

KEZAR STADIUM, SAN FRANCISCO, Dec. 29.—(AP)—Eastern football regained part of the prestige lost in earlier season skirmishes when a great all-star eleven smothered its western rival, 20, today in the annual east-west charity game. More than 50,000 persons, assembled in the municipal bowl for the benefit contest for the Shriner's crippled children's hospital, saw the eastern stalwarts outplunge the western warriors throughout four periods of bitter battle. The first victory for an eastern team since the classic was started in 1925, was chalked up. An eastern touchdown crashed over in the first few minutes of play and thereafter, the visitors from the sunrise side of the Rockies had things their own way. While westerners were still reeling under the shock of the first offensive, their rivals, functioning like a well oiled machine rushed over and knocked down the second period; bent them back in the third quarter and finished in the last frame with a spurt that counted another touchdown.

A brilliant backfield combination, featuring Holmer of Northwestern, Harpster of Carnegie Tech, Howell of Nebraska and Weston of Boston college, ran riot through the western defense—demoralizing it with an aerial attack and crushing it on the ground. Twelve first downs followed the efforts of the victors while the west was able to chalk up but three. The western offense was so lacking that on only three occasions were the easterners called upon to defend themselves in their own territory. During the game, the west got no nearer to its rival's goal line, than the 40-yard mark.

The first score came when the east drove from its own 20-yard line to the west's 22-yard mark—three passes accounting for the gains. Holmer tossed them all, one to Harcraft of Minnesota and two to Howell. Plunkos brought the ball to the 10-yard line where Sims, Stanford, intercepted a pass, giving the ball to the west, but for only one play. Hoffman's kick was poor and the east started another drive from the 30-yard line, that ended when Howell crashed through center for two yards and a touchdown. Nowack, Illinois, place-kicked the try for point.

A 58-yard advance in the second period netted another touchdown. Line backs brought the easterners down to the five yard mark where Howell once more punched center to land in scoring turf. And the half ended, East 13; West 0. The third period saw the west on the defense throughout, with the east advancing to the 12-yard line soon after the kick-off, but losing the ball in an incomplete pass. The quarter ended with the east holding the ball on the 9-yard line. Checked momentarily in the fourth quarter and losing the ball twice after reaching within scoring distance, the eastern squad crashed over the final tally shortly before the game ended.

The lineups and summary: East (29)—Harcraft, Minnesota, left end; Nowack, Illinois, left tackle; Fox, Pittsburgh, left guard; Aschman, Wash. & Jeff., center; Gibson, Minnesota, right guard; Getto, Pittsburgh, right tackle; Johnson, Northwestern, right end; Harpster, Carnegie Tech, quarter; Weston, Boston college, left half; Howell, Nebraska, right half; Holmer, Northwestern, fullback. West (0)—Franklin, St. Mary's, left end; Tobin, St. Mary's, left tackle; Robesky, Stanford, left guard; Grannucci, Santa Clara, center; Diehl, Idaho, right guard; Dressel, Wash. State, right tackle; Ford, Olympic Club, right end; Allen, Olympic Club, quarter; Sims, Stanford, left half; Horan, Wash. State, right half; Hoffman, Stanford, fullback. Score by periods: East... 7 6 0 7—20 West... 0 0 0 0—0 Summary: East scoring: Touchdowns: Harpster, Howell 2. Point from try after touchdown, Nowack 2, (place kicks).