



Brighten Lawn With Crocuses



grade bulbs are better for this purpose than the giant sizes as they require less disturbance of the sod. The old practice of outlining the initials of the home owner with bulbs or of making geometrical patterns has given way to the much more artistic natural system of scattering the bulbs over the lawn as if they had occurred naturally in small and large groups and occasionally a single bulb. Standing in the middle of the lawn and throwing them about has often been described as a method of distribution, but many bulbs are lost by this method. They can be strewed along in comparatively straight lines in the same careless manner and can be kept track of better and give the same natural effect.

Crocuses tucked into the beds and borders among perennials give a gay early spring display and color in the garden and a bright profusion to the season's bloom. They are also hardy subjects for pots in a sunny window as they bloom quickly after being brought to the light and have a season of two weeks of bloom.

Crocuses should be bought in quantity with 100 as a minimum to produce an effect in the garden. All the small bulbs need to be planted in quantity to give them full effect. They are most convenient material as their foliage dies down early and does not interfere with other vegetation while being overgrown does not in the least harm the bulbs. It is, in fact, an advantage and protects them from premature drying off, thus producing stronger bulbs for the following year.

Crocuses in the lawn are short lived chiefly because it is necessary to mow the lawn before the foliage of the bulbs has time to mature, thus weakening the bulbs.

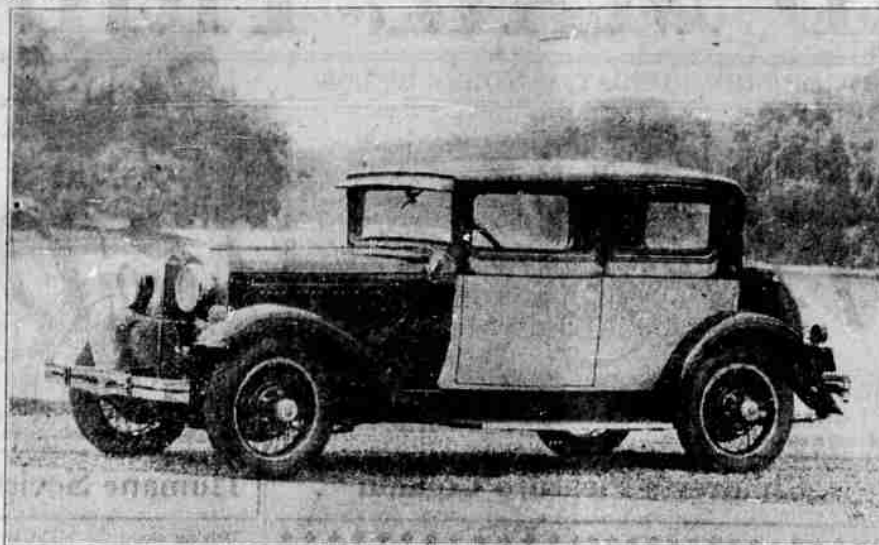
Smith in Three States

Governor Smith declared the longer day that New Jersey no longer was doubtful, meaning that it was sure to go democratic. Unquestionably he feels the same way about New York, his own state, which he has carried four times out of five times up as candidate for governor. He doubts less feels scarcely less confident about Massachusetts, and for the same reason—the belief that the state is wet as a whole and will vote wet. It would be almost impossible to figure out a victory for Smith without the big New York vote in the electoral college. In order to feel at all comfortable about their calculations, the Smith forecasters must do include the three states here named. It is interesting, therefore, to note some of the normal pluralities that must be overcome to bring about such a result.

Coolidge carried New York in 1924 by a plurality of 89,000 over Davis, with a total vote of 2,238,000, including 147,000 for La Follette. The largest vote cast by the state was 2,857,000 in 1920, including 205,000 for Debs, Harding had a plurality of 1,090,000 over Cox. In 1916 Hughes had a plurality of 110,000 over Wilson, with a combined vote of 1,628,000. New Jersey gave Coolidge a plurality of 378,000 over Davis in 1924, with a total vote including 109,000 for La Follette, of 1,983,000. In 1920, with a total vote of 870,000 for the leading candidates, Harding and Cox by 254,000. In 1916 Hughes carried the state by 900 over Wilson, Massachusetts gave Coolidge a plurality of 422,000 over Davis in 1924, La Follette getting 141,000, the total vote being 1,125,000. Harding had a plurality of 404,000 over Cox in 1920, the combined vote being 617,000. At the same time it must be borne in mind that in the last few years New York not merely has elected Smith governor four times. It has elected two democratic United States senators, Massachusetts has twice elected a democratic governor and twice a democratic senator. New Jersey has elected democratic governors in the last three contests and has elected one of these to the senate.

Two factors are counted upon to upset these states, in spite of their overwhelming republican record for presidential years. They are liquor issue and the personal popularity of Smith in and about New York. It is the presence of these factors, against that makes the guessing interesting, but difficult. That the vote will be larger—seems to be accepted. Both the liquor and the religious opposition will stimulate registration and voting, and each will work both ways—K. C. Star.

New Models In Dodge Victory Six Line



ATTRACTIVE colors and stylish appearance mark the new Victory Six four-passenger coupe now being offered by Dodge Brothers, with five wire wheels as standard equipment. The hood and cowl of the car pictured along with molding and upper structure are black, while the belt panels and body are in opal cream. Custom finished coachwork and special upholstery are featured.

HOME EDUCATION

'The Child's First School Is the Family.'—Froebel

Issued by the National Kindergarten Association, 8 West 40th Street, New York City. These articles are appearing each Sunday in the Mail Tribune.

THIS MATTER OF TRUTH-TELLING

Edith Lochridge Reid

"Dorothy told me that the dog grabbed her dress and tore it out as she came down." Mrs. Allen looked worried and resentful as she related her trouble.

"Why did you think she told you that?" asked grandmother, who appeared placid and confident, as if she might be able to analyze the situation from a more detached viewpoint than the mother could.

"Oh, I know why she told the lie, for that's certainly what it is, though I regret to admit such a fault in my own daughter," replied Mrs. Allen.

"Why was it?" asked grandmother, still more keenly interested in solving the problem.

"Well—I told her if I found out that she climbed that scraggly old tree, I'd punish her," answered Mrs. Allen.

"But reason did she give for climbing it?" continued grandmother.

"Oh, she had an excuse—about putting a baby bird back in the nest or something of the sort," replied Mrs. Allen.

Grandmother was thoughtful for a few moments. So was Dorothy's mother. There seemed to be several points here that should be considered before censuring Dorothy too harshly or unfairly. Grandmother was the first to speak.

"I do not believe Dorothy would have told you this untruth if she had not felt the threat of punishment hanging over her. While she might have expected your discipline, she would not have expected yours."

children have heard their parents use similar tactics to break engagements that were undesirable. At least, the truth telling habit should be cultivated in children. This cannot be done by threats of punishment nor by means of the hard and fast command to be truthful, but only by establishing a respect for the spirit of truth.

Wave Changes Mayard Hunting For Distance

NEW YORK, Oct. 28. (AP)—Revival of interest in distance hunting from the realization of wave lengths, effective November 11, Gordon C. Sleeper, radio authority, believes.

"Although there are almost always good programs from the local stations, it cannot be denied that the picking up of a distant station is far more thrilling than tuning in on the home town broadcaster. With a good set, there should be no reason why radio fans on the Atlantic coast cannot hear the powerful western and Pacific coast stations if the radio commission's plans work out as expected."

Radio Now Used In Trapping Criminals

A radio set installed at the Carquinez bridge near Oakland, Calif., is assisting in trapping criminals using this span in making a quick get-away from the San Francisco bay cities to the Canadian border.

Men on the bridge keep the set tuned in the 24 hours they are on duty. Through KGO, the trans-bay broadcaster of the General Electric, San Francisco and Oakland police departments give them descriptions of any lawbreakers headed north.

Dredges Displace "Sourdoughs"

FAIRBANKS, Alaska.—(AP) Alaska's golden heart is throbbing again, its beat quickened by mechanical giants which are displacing the hardy prospector of the adventurous gold rush days 29 years ago.

Modern marvels of the gold industry, huge hydraulic dredges supplemented with novel methods, have attracted new life to this vast district in the very heart of Alaska. Streams where the "sourdough" labored with pick and shovel will be mined again. Ice and frozen earth, long the enemy of the Alaskan placer miner, have been conquered by extensive systems of cold water thawing, and gold which the early fortune seeker failed to get to the surface of many creeks.

Large scale operations, made possible by the expenditure of more than \$10,000,000, were started this summer after two years of preparation. During this time, years of additional production.

the Fairbanks Exploration company, a subsidiary of the United States Smelting and Refining company, constructed an 85-mile canal and an electric power plant to develop 5,000 horsepower.

A network of pipes was built to make possible the thawing of ice and frozen ground by the pressure of cold water, thus loosening the gold-bearing gravel for the two dredges. This method of thawing was adopted after earlier experiences with steam and the building of fires on the surface of the ground had proved too costly. The company also created here the farthest north fireproof office building in North America.

Five more dredges will be added to the operations within the next two years. It will take from 25 to 30 years, it is believed, to wash the known gold-bearing gravel beds near here, with extensions to adjacent territory assuring of preparation. During this time, years of additional production.

More than 1,000 persons were employed during the preliminary work, but with the start of actual mining this number was cut to 500.

Government officials in Alaska predict that the hundreds of claims purchased by the exploration firm alone interior streams will yield from \$100,000,000 to \$150,000,000 in gold. Company officers, however, make a much lower estimate of about \$50,000,000.

Introduction of the gigantic placer operations has sent the population of Fairbanks upward, but the mushroom growth that followed the first discovery of gold is lacking. At the time of the great rush the town boasted 20,000 inhabitants. Within a few years the number dwindled to less than 2,000, but the revival of mining has sent the total near 4,000.

Klamath Falls—Weyerhaeuser Timber company proposes to construct here mill four miles south-west of here. Will employ 1500 men.

Last Day, Saturday, Nov. 3rd "Western Auto's" Mid-Fall Tire and Tube SALE!

Just a few more days of these Greater Savings on guaranteed "Western Auto" Tires and Tubes. Thousands of motorists have taken advantage of this opportunity to equip their cars with guaranteed "Western Auto" tires, and are now prepared for safer winter driving. Just a few more days remain for you also to benefit by these Sale prices.

Table listing tire and tube prices for various sizes (e.g., 29x4.40, 30x4.50, 31x5.00) and types (e.g., Full Balloon, Jumbo Extra Thick).

Table listing Western Giant Balloons and Wear-well Cord prices for various sizes (e.g., 30x3 1/2, 30x4.50, 31x5.00).

Table listing Western Giant Balloons and Wear-well Cord prices for various sizes (e.g., 30x3 1/2, 30x4.50, 31x5.00).

Table listing Western Giant Balloons and Wear-well Cord prices for various sizes (e.g., 30x3 1/2, 30x4.50, 31x5.00).

Table listing Western Giant Balloons and Wear-well Cord prices for various sizes (e.g., 30x3 1/2, 30x4.50, 31x5.00).

Western Auto Service... More than 150 Stores in the West... Western Auto Supply Co. Cor. Main and Riverside

Your own judgment is a safe basis of choice



Multum pro parvo

Drive the new De Soto Six yourself into the tangle of traffic and note its nimble acceleration, smoothness and flexibility—take it out on the open road and watch the speedometer climb quickly to well above sixty—observe its roominess, its riding ease, and the perfection of every feature that gives luxury and comfort—then and only then will you appreciate fully why De Soto Six is rated the outstanding value in its field.

DE SOTO SIX PRODUCT of CHRYSLER

HIGHWAY MOTOR CO. 123 South Riverside—Quality Cars—Phone 254

YOU'RE RIGHT It's an Indispensable Convenience! A Checking Account is almost a necessity to the modern man or woman. It gives business standing, aids in paying bills and gives account of all income and outgo. Try this pleasant way of handling your financial affairs.

THE JACKSON COUNTY BANK ESTABLISHED 1888 MEDFORD, OREGON Commercial - Savings - Safe Deposit MEMBER FEDERAL RESERVE SYSTEM