

# REPUBLICANS ENTHUSIASTIC FOR TICKET

Committee Meeting At Ashland Shows Party Is Active--Ladies Prominent In Meeting and Campaign--Tributes to Judge Thomas.

The Republican county central committee held a meeting in Ashland Thursday afternoon, which was attended by committeemen, candidates and visitors. Chairman Frank Farrell presided and Vern Marshall, secretary of the committee, officiated in his capacity.

A notable feature of the meeting was the large attendance of ladies and the talks they made predicting success for Hoover, Judge C. M. Thomas and the entire ticket this fall, and pledging their support to the same.

Talks were made by Fred Holmes, A. C. Nindiger, G. M. Greene, Mrs. L. Dodge, Mrs. Jillson, Miss Johnson, Mrs. W. G. Tucker, all of whom were enthusiastic for the ticket and opposed to the effort being made by a few to defeat two or three places on the ticket.

The speakers also pledged the usual good Republican majority for the ticket this fall.

Candidates Victor Bursell, C. A. Stacy and Newton Chaney were present and being called on, made short talks.

C. E. Gates predicted Republican success this fall, which, he said, means continuation of prosperity to the nation and in community affairs in re-electing men who have made good in their first terms and the selection of a pioneer of the county for sheriff.

Mr. Gates paid a high tribute to C. M. Thomas' record as judge during his first term, and said: "Why is it that this little, active bunch has found nothing the matter with Judge Thomas and his splendid record until 20 days before election. Judge Thomas has lived in this city for years, has been directly connected with those things that have for their object the betterment of the community, has a wonderful wife and three fine boys, an ideal home, has served this state in the legislature with honor, and has made one of the best judges in the state, as has been evidenced by the compliments paid him by the press, public men and citizens generally of the state, as well as at home. This political attack just prior to the election by a few, principally by a minority of the lawyers of the bar is unwarranted and will be shown as such by the people on November 6."

In closing "Pop" said: "Look Judge Thomas square in the face, then look those who are running around enthusiastically opposing him square in the face--see whom you will believe and then vote accordingly."

REGISTRATION IS SHOWN IN STATE FOR NOVEMBER 6

SALEM, Ore., Oct. 19.—(AP)—The Republican party has gained 21,228 voters and the Democrats 19,216 in Oregon since the election of November 2, 1926, according to total figures compiled by the secretary of state showing the registration for the coming election of November 6 next. The tabulation shows a total of 427,446. Two years ago the total was 359,236.

The new Republican registration is 299,302, as against 247,914 two years ago, while the Democratic total is 114,119, against 94,908 in 1926.

Other classifications shown in the total are: Progressives, 514; Prohibitionists, 1979; Socialists, 1566; miscellaneous, 19,785.

Of the 359,236 persons who registered prior to the 1926 election, only 223,284 voted.

Multnomah county's total vote in the new registration is 148,211, of which 107,209 are Republicans and 27,570 Democrats. Marion county is second with 27,233, of 20,202 Republicans and 6218 Democrats.

The new figures are based in most counties on totals received from county clerks, in others on the weekly lists furnished by the county clerk after revision by the postmasters as required by the law. Totals are not segregated as to male and female voters.

DISSENSION AIRED SAN ANTONIO LEGION

SAN ANTONIO, Oct. 19.—(AP)—Local dissatisfaction with high American Legion workers has led to a proposed investigation of the Legion Bureau which directed the fourth annual national convention of the American Legion which ended here recently.

In a meeting so chaotic that scheduled election of post officers was sidetracked, the Alamo post of the Legion last night voted unanimously to investigate the convention Bureau and letting of convention. The proposed investigation was the topic of a bitter debate.

MANN'S — — — — — THE BEST GOODS FOR THE PRICE, NO MATTER WHAT THE PRICE — — — — — MANN'S

# Last Day of MANN'S 18th Anniversary Sale! An Avalanche of Bargains All Day Saturday

## Buy Your New Coat at Mann's ..... Tomorrow

Just to wind up our anniversary sale in a blaze of glory we will offer all of our dress coats that sold over \$65.00 at the big discount of **18%**

- All \$74.50 Dress Coats now ..... \$61.09
- All \$79.50 Dress Coats now ..... \$65.19
- All \$98.00 Dress Coats now ..... \$80.36
- All \$122.50 Dress Coats no ..... \$100.45
- All \$135.00 Dress Coats no w ..... \$110.70

This Offer for One Day Only  
**Two Big Specials for Saturday**

- Lot 1—50 wonderfully new, all-wool Coats in misses' and women's sizes, nicely trimmed with big fur collars, full lined, good colors and materials, as a great big Special Saturday **\$16.18**
- Lot 11—100 new Coats just in, made of All-Wool Suedes and Buckskins with big shawl collars of fur; good colors; all sizes; up to \$35.00 values; Saturday, each **\$24.18**

## New Dress Fabrics at Special Prices

- All-Wool Marchan**  
54 inches wide, a beautiful Woolen materials, with a beautiful lustrous finish; regular price \$3.95; special, Saturday, **\$3.38** yard
- Wool Mixtures**  
For Dresses—36 inches wide, in novelty weaves and pin stripes; excellent for children's school dresses; regular price \$1.19; Saturday special **98c** yard
- Crepe de Chine**  
40 inches wide; All-Silk; thirty different shades to choose from. Anniversary sale price, **\$1.98** Saturday, yard
- Crepe Back Satin**  
40 inches wide, very heavy weight, colors, black, navy, cocoa, brown, wine Resida, green, and Liberty blue. The regular price of this Satin is \$3.95. Very special, Saturday, **\$3.68** yard
- Velveteen**  
36-inch, fast-color and fast pile Velveteen, colors, red, green, brown, orange and copen; regular price \$2.75; special **\$2.68** Saturday, yard

## Saturday Sale of Hosiery Best Quality at Lowest Price

- Nevermend and Blue Crane**  
Pure Silk Hose in all colors and sizes up to 10 1/2; \$1.19 values; Saturday, **98c** pair
- Theme**  
Pure Silk Hose, full-fashioned; silk to the hem, in all the best shades; regular price \$1.65; on sale Saturday, **\$1.38** pair
- Ribbed Hose**  
Women's Lisle ribbed Hose in grey, beige, peach and nude; values up to 69c; on sale Saturday, pair **48c**
- Kayser's**  
All-Silk Chiffon Hose with pointed heel; all sizes, comes in all the new autumn and winter shades; very special. **\$1.95** Saturday, pair

**A Big Sale of Bags and Purses**  
Made of Calfskin, Pin Seal and Indian Leather; pouch and under-arm styles; a real buy Saturday at, each **\$3.48**

**Stamped Luncheon Sets**  
45-inch Linen Luncheon Sets, stamped with bordered edges in blue, yellow and green; very special Saturday, **\$2.25** set

**Montag's Stationery**  
One pound writing paper and two packages envelopes; regular price 55c; Saturday, box **38c**

See Window Display  
**MAIL ORDERS PROMPTLY FILLED!**

## New Hats

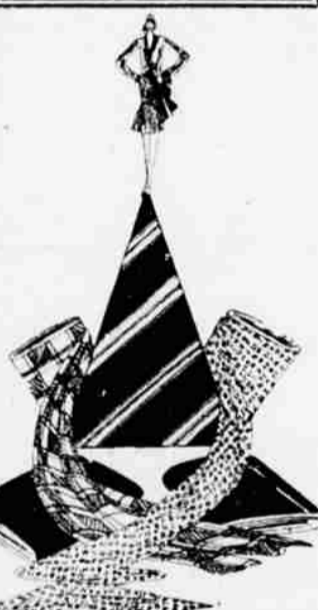


Specially Priced

**\$5.95**

Every new style trend and Fall color is represented in this collection selling way below regular Saturday.

Last Day of Anniversary Sale



**Tapestry Pillow Squares**  
18-inch square woven, tapestries, imported from France, special shipment for Anniversary sale; four patterns to choose from; extra special **28c** Saturday, each

**Notion Specials**  
Tapes, Braids and fancy edgings; in all shades; regular price 15c bolt; on sale Saturday: **8c**

Two bolts for **Colorful Mottos** in attractive frames, each **38c**

**Linen Handkerchiefs**; dainty patterns, 50c values, each **48c**

**Windsor Ties** in all the new shades and styles, each **48c**

## Another Sensational Dress Sale at Mann's Tomorrow

**\$15.00 Values \$8.88**

For the last day of our Anniversary sale we will offer a group of Dresses that cannot be equalled anywhere at the price. There are just 100 in the lot, made of good quality Satins, Flat Crepes, Georgette and velvet combinations and light weight Wool, in all the new autumn shades; sizes 13 to 19 and 14 to 42; former prices up to \$15.00. **\$8.88** Anniversary sale price, each



**\$35.00 Silk Dresses \$14.88**

A group of 150 lovely styles in this lot made of splendid quality Satins, Crepes, Velvets, two-piece effect, straight line, and hi-ti styles; colors, navy, new shades of tan, brown and Independence blue, bright red and wine; all sizes; up to \$35.00 values. On sale Saturday, each **\$14.88**

**New Silk Dresses at \$24.18**

Another special group of Dresses made of extra fine quality Satins, and Crepes, ruffled skirts, dainty lace collars and cuffs, tight bodice and bustle backs, plaited and ruffled skirts; all new shades; all sizes; special, each **\$24.18**

**Print Wash Dresses**  
New shipment just in, made of the best quality Prints, Broadcloths and Cretonnes; all new fall styles, special, ea. **\$1.95**

All of Our \$65.00 Coats Now **\$59.88**

## A Big Sale of Domestics Tomorrow

- Bed Sheets**  
81x90-inch, good quality Sheets, made of a splendid grade of Sheet-ting; regular price \$1.20, **98c** on sale Saturday, ea. ....
- Crepe Bed Spreads**  
80x105-inch, fancy Crepe bed-spreads, comes in blue, rose and gold stripes; regular price \$2.25; on sale Saturday, **\$1.48** each
- Outing Flannel**  
36-inch wide, heavy quality Outing Flannel, comes in checks and stripes, light and dark colors; on sale Saturday, **28c** yard
- All-Wool Blankets**  
66x80-inch double All-Wool Blankets, comes in blue, green, tan, grey and lavender plaids; an extra fine quality for, **\$9.50** pair
- Blanket Special**  
66x80-inch double Wool and Cotton mixed Blankets, comes in gold, blue, buff, lavender, grey and rose plaids; extra special Saturday, pair **\$3.45**
- Belgian Table Covers**  
54 inches square, beautiful colors and gold embroidery in designs; very special, **\$6.95** Saturday, each

## ANOTHER BIG SALE OF SEASONABLE UNDERWEAR

- Goldette Bloomers**  
in large sizes, made of a heavy quality of Rayon; all shades; extra special, **98c** Saturday, pair
- Corselettes**  
Wrap Corsets, Step Ins, Elastic Girdles and Garter Belts; these garments are well made of good materials; all sizes; up to \$1.50 values; Saturday, **98c** each
- Crepe Gowns**  
in plain and figured patterns; all styles and shades; real \$1.25 values, Saturday, **98c** each
- Women's Outing Flannel Gowns**  
heavy quality, in plain colors and fancy figures, long and short sleeve styles; all sizes; special **\$1.25** Saturday
- Women's Union Suits**  
Low neck, no sleeves, knee length; made of fine cotton with Silk Stripe **\$1.25** Special Saturday
- Rayon Combinations**  
For Children two to eight years, peach only, \$1.25 values on sale Saturday, **88c** each

**Pillow Cases**  
42-inch stamped Pillow Slips, all ready to embroider, made of fine grade Tubing; regular price \$1.25; on sale **98c** Saturday, pair  
See Window Display

## 18 Years in Medford Selling Quality Goods and Service

**Mann's Dept. Store**  
The Store for Everybody  
MEDFORD OREGON

**Coty's Toilet Water**  
in all odors including the new odor L'Armont; regular \$3.45 size special **\$2.38** Saturday, each

POSTAGE PREPAID AGENTS FOR BUTTERICK PATTERNS