

# FORECAST CROWDED SCHOOLS

### Large Enrollment and More Crowded Conditions Than Last Year—Junior High Is Chief Problem—Registration Hours Listed and Districts Outlined—Tuition Fees For Non-Resident Pupils Same as Last Year.

All city schools, both grade and high are scheduled to open Tuesday, September 4th. According to Superintendent Heckflick, "Present indications point to a larger enrollment than last year. Present conditions show that Medford has been increasing in population about 10 per cent annually for the last four years. Our most crowded situation will be the Junior High school. The board has rented the old Methodist church on Bartlett street for overflow classes from this building. Washington school will be entirely full, but it is believed the pupils can be handled in those schools without renting outside space."

Pupils in grades one to six will be registered Tuesday morning, September 4th at a 9 a. m. when they appear at their respective buildings.

Junior High school pupils (7th and 8th grades and pupils conditioned to the 9th grade) and any others not in school here last year and not already registered are added to present themselves at the Junior High school Friday, August 31st, 9:00 to 12:00 o'clock for registration.

High school students who have not already registered or who have any changes to make in their registration are asked to do so on Friday, August 31st, between 8:00 and 12:00 o'clock.

Pupils who will be six years of age before six months after the opening of school, on September 15th are accepted for entrance without question; younger pupils who will be six during the first semester may be accepted provided they show by test mental age development of six years.

years. Parents of such children who desire to enter them should call the city superintendent of Mrs. George B. Canode, phone 259-14, who has charge of testing such pupils, between now and September 1st.

The boundary lines of wards served by the four elementary schools are, with a few exceptions the same as last year and are as follows:

The High school and Junior High school, each serves the whole city for the grades it represents.

The four elementary schools house grades one to six. Roosevelt school serves all the territory on the east side of Bear Creek. (The Riverside school and South Central district has been thrown back into the Lincoln school.)

The Lincoln school serves that portion of the city west of Bear Creek and East of the S. P. R. R. tracks.

The Jackson school serves the west and northwest part of the city lying west of the S. P. R. R. tracks to Fourth street 1/2. From the intersection of the railroad tracks to Fourth street. From south line of the Jackson district south along the center of Fourth street to Peach street, thence south on Washington and Plum to the southern boundary of the school district.

South of the Jacksonville highway the west line of the Medford school district coincides closely with the west city limits. North of the Jacksonville highway the district line is the center of Ross Lane.

Washington school serves the southwest part of the city, or that territory lying west of the railroad tracks and north to the center line of Fourth street; the north and west boundaries following the center line of Fourth, Peach, Main, Washington, and Plum streets.

All pupils from the given districts are expected to report to their own respective schools for the opening day. Following registration, where it can be shown that individual parents or pupils will be better accommodated by attendance at some other school, an effort will be made to effect transfers. Superintendent Heckflick pointed out that while the board and he were desirous of meeting the wishes of parents in so far as they could, that in a crowded situation such as Medford has, and with school buildings not exactly located in centers of population, it is not always possible to place every child as they would like to be able to do.

According to the board's order tuition for non-resident children is fixed the same as last year at \$5.00 per month for elementary and Junior High school pupils, payable in advance. For high school pupils, it is \$10.00 per month. High school pupils living in a school district which does not support a high school have their tuition paid by the county. Non-resident parents who are in arrears on tuition for most year must square the account before their children will be accepted into the Medford schools for this year.

## TENTATIVE LIST OF TEACHERS IN SCHOOLS NAMED AT EARLY DATE IN THIS SECTION AT MONDAY MEET

Tentatively, the following assignment of teachers in the schools has been made. A general teachers meeting has been called by the city superintendent for the Junior High school building, Saturday, Sept. 1st, at 1:30 p. m. for preliminary organization and assignments. Following the general meeting there will be special meetings of the teachers of the several schools.

**High School**  
B. H. Conkle, principal; Myrna Barrett, Maude Barringer, Gertrude Butler, P. G. Callison, Maxine Carroll, Esther Church, H. E. Cope, Ruth Ella Dickerson, Glenna Mae Early, Mary Gilbert, Zoe Hubbs, E. M. Hunsong, Elizabeth Jerome, Josephine Jones, Leland Knox, R. Humphries, LeLaud Metzger, Lora Mitchell, Ella Benson, Marguerite Scott, Josephine Kirby, Johanne Fleet, Isabel Willis, Ralph Bailey, C. G. Smith, Mrs. C. G. Smith, Josephine Smith, Myrtle Tolley, Ruth Abele, C. D. Thompson, Virginia Wall, Wilson Wall (part time), Nettie Mae Haugson.

**Junior High School**  
A. J. Junig, principal; Esther Elzeck, Winifred Andrews, Edith Brown, Opal Clarke, Walter Netzel, Albert Fitch, Janet Ford, Annette Gray, Marguerite Hammond, Ray Henderson, Florence Hurd, H. W. Keesee, Dorothy Matheny, Ruth MacCollister, Grace Simons, Ray Carver, Della Whiteman, Melba Williams, Carol Ramsey, Maybelle Churchill, Wilson Wall (part time).

**Elementary**  
H. W. Gustin, principal; Mildred Henderson, Esther McCollum, Jessie Jensen, Jessie MacNiven, Edith Duval, Alice Hansen, Theone Taylor, Marian Briggs, Jeanne MacNiven, Yvonne Smith.

**Lincoln**  
Ora Cox, principal; Florence Schott, Golden Starr, Ora Tucker, Ruth Shankle, Emily Webber, Laura West, Aletha Gray, Pearl Turner.

**Roosevelt**  
Sara Van Meter, principal; Louise Basford, Allene Maxwell, Anna B. Carter, Priscilla Webb, Lee Morrison, Mildred Asplavall, Florence Allen, Fred Schneider, Ethel Willetts.

**Washington**  
B. R. Finch, principal; Blanche Canode, Marian Beeson, Avis Anschuetz, Lydia Cooney, Gertrude Parker, Alice Cromar, Beulah Smith, Amy Harding, Lora Lynch, Ruth Bolton.

## JACKSON G. O. P. TO SEPTEMBER TO BE LEGION NOMINATES

The republican state central committee will soon open headquarters in Portland and conduct a vigorous campaign. Every county in the state has a republican organization that is preparing for active work.

Never in the history of the state have the women showed such an interest in politics, and their work and influence will be greatly felt in the campaign.

Lloyd Cook, secretary of the state republican committee, leaves for Portland early this week to be actively connected with the committee work.

Chairman Phil Metcahan of the state committee has chosen S. Sumpter Smith, state committeeman, and Mrs. D. Peruzzi of Ashland as members of the executive committee. Both of these republicans have served on this committee for several years.

Ralph Williams, national committeeman from Oregon, senior member of the committee and vice chairman, leaves for the east early in September to assist in arranging for the campaign all over the country.

The republican county committee, with Frank Farrell as chairman and Vern Marshall secretary, is already actively preparing for a vigorous campaign in Jackson county and will open headquarters soon.

The committee consists of 56 members from every part of the county, who will take active part in the campaign.

Chairman Farrell has appointed the following executive committee: G. M. Green, Fred C. Homes and D. H. Jackson, Ashland; George Hilton, Jr., A. J. Crose, P. M. Kershaw, G. M. Roberts, Seely V. Hall, F. P. Farrell and Vern B. Marshall, Medford; S. G. Nye, Talent.

## Medford to Have New Style Shop

An outstanding recognition of our city's progress will be the opening, about September 5, of an exclusive shop for women in the Craterian theater building.

This new shop will be owned and operated by a former Medford girl, Mrs. Edithwyn Brown Hoffmann, and will bear her name. Mrs. Hoffmann, an Edithwyn Brown, will be well remembered by the older families of the community. She has spent the years, since leaving here, as buyer for several of the largest stores of the country. With her discriminating taste, rare judgment and her appreciation of what the smartly dressed woman should wear, she brings to Medford a wealth of experience and a close contact with the dictators of fashion. Mrs. Hoffmann says there is no city of its size in the country, whose feminine population is better qualified to appreciate high class merchandise.

The location for the new shop is being entirely redecorated and, when completed, will probably be the most attractive women's shop on the coast. The stock will consist of hats, coats, dresses, lingerie and accessories.

Medford Post No. 15 of the American Legion will hold an important business meeting tomorrow night at the armory. Nomination of officers for the coming year, plans for the annual Labor Day and other items of interest should draw a large attendance. Although no advance information has been received concerning the prospective candidates for post officers it is anticipated that with Medford Post's membership of over 725, there will be plenty of competition for the more important berths.

Nominations will be made at only two meetings, tomorrow night and Monday, Sept. 10th. The annual election will take place in accordance with the newly adopted schedule on Sept. 24th and installation of officers, the first meeting in October.

SALEM, Ore., Aug. 25.—(P) The issuance of refunding bonds at a lower interest rate is said to be part of a plan for refinancing and reorganizing the Grants Pass Irrigation district presented here today at a meeting of the state reclamation commission with the district bondholders' committee. The meeting was in executive session and details of the plan were not made public.

CHICAGO, Ill., Aug. 24.—(P) The price of beef, on a comparative basis, is cheaper than it was before the war, but Armour & Co., in a review of general packing house conditions, reported that business continues unsatisfactory.

**ONYX POINTEX HOSIERY**  
For Women \$1.95

*The Hosiery Company*

**Mann's Department Store**  
"THE STORE FOR EVERYBODY"  
PHONE-486-487 MEDFORD, OREGON.

### Soleil Hat Days



Monday, Tuesday, Wednesday—a Sale of Newest Fall Models in Soleil Felts

**\$4.75** The style-value event of the season, for the hats are all brand new and of lustrous soleil—the leading millinery fashion for fall. The newest colors are here, too, and every head-size!

**\$7.45**

Millinery Shop—Second Floor

### Daily Meteorological Report

Sunday, August 26

**Forecasts**  
Medford and vicinity: Sunday unsettled. Not much change in temperature.  
Oregon: Sunday unsettled, probably with thunderstorms in mountains of east portion, and showers on coast. Cooler in east portion Sunday. Rising humidity.

**LOCAL DATA**

Temperature (deg.)	69	79
Highest (last 12 hrs.)	89	85
Lowest (last 12 hrs.)	60	57
Rel. Humidity (Per.)	70	74
Precipitation (inches)	0.00	0.00
State of Weather	Cloudy	Cloudy
Total precipitation since September 1, 1927	15.65	inches.
Sunrise today	5:31 a. m.	
Sunset today	6:53 p. m.	
Sunrise Monday	5:31 a. m.	

C. A. COLE, Meteorologist.

BISMARCK, N. D., Aug. 25.—(P) Little hope was held today for the recovery of Governor A. G. Sorlie, who has been suffering from a heart ailment for several weeks.

### Obituary

**QUACKENBUSH**—Robert Quackenbush, age 78, son of Mr. and Mrs. Guy Quackenbush of Talent, passed away Friday, August 24, 1928. The funeral services will be held this Sunday afternoon at 3:30 o'clock from the Dodge Undertaking Parlor in Ashland.

**Old Pioneer Is Called.**  
PALO ALTO — Mrs. Barbara Schlager, 95, died at the home of her daughter, Mrs. Charles G. Lathrop, on Stanford University campus. She was the widow of Herman Schlager, who founded the Pioneer hotel in Mariposa in the gold rush days. Funeral services were set for Saturday.

# JACKSON COUNTY FAIR

## SEPTEMBER 12-13-14-15

### RUNNING RACES

70—HORSES—70

Also

### CHARIOT RACES

### TRICK RIDING

### ROPING—RELAY RACES

and

### ROMAN RACES



### BAND CONCERTS

Featuring

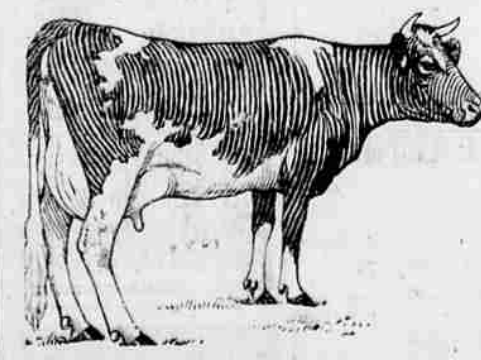
### ASHLAND—GRANTS PASS AND MEDFORD BANDS

SOMETHING DOING EVERY MINUTE

A Great Gala Week for Southern Oregon and Northern California People

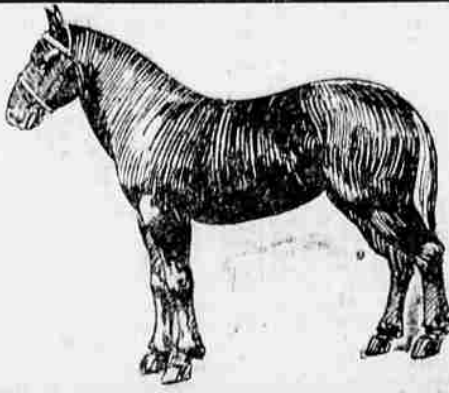
### \$20,000 IN PREMIUMS

Our Live Stock, Poultry, Horticultural, Agricultural and Dairy Products, Needle and Art Work, Products of Kitchen and Pantry, School Exhibits



### NEW BUILDINGS! NEW DISPLAYS!

All resources, all industries, all energies of Jackson County have been brought together with one effort to make this fair bigger and better than any county fair ever held in the state. Every phase of agriculture—stock-raising, fruit, vegetable and grain farming, dairying, poultry raising, products of kitchen and pantry, boys' club work—has been called upon to aid in the various exhibitions. Every department will be crammed full of the splendid products of Oregon.



### One of the Finest District Fairs in the West