

COMING COUNTY FAIR SEPT. 12, WILL ECLIPSE ALL PREVIOUS EVENTS

With the construction of nearly 42,000 square feet of additional floor space on the Jackson county fairgrounds, improvements to old buildings, enlarged entertainment program, the co-operation of taxing units of the county and general spirit of enthusiasm for the annual exposition which the board of directors have encountered, the Jackson County Fair and Oregon Pear Show scheduled for September 12th to 15th inclusive, promises to eclipse all former records.

This year, for the first time, Granges of the county will cooperate in collecting and arranging horticultural and agricultural exhibits for their respective districts. Heretofore individuals from the different communities have voluntarily undertaken the work and very creditable displays have resulted from their efforts, but it is believed that a wider range of interest may be attained through the interest of the Granges which are now thoroughly organized in seven districts, including Central Point, Talent, Eagle Point, Wimer, Rogue River, Lake Creek and Sams Valley, Belleview community and Valley View will also have their usual fine displays under the arrangement of committees headed respectively by Mrs. Mary L. H. Tucker and D. M. Love.

Entertainment Program

A comprehensive entertainment program has been lined up by the secretary of the fair board, H. O. Frohbach, and assistant, Dan Herling. The track will be improved and over seventy head of California and Oregon horses will compete daily in running races for the edification of the grandstand crowds in addition to amateur races for boys of the different communities of the county mounted on their favorite ponies. Frank Booth of Enterprise, will bring twenty or thirty head of his famous string of horses featuring Roman races, trick riding and fancy roping stunts and his performers will also compete in the daily racing program.

Music by Three Bands

Negotiations are under way with local organizations of Ashland, Grants Pass and Medford for a series of concerts day and night at the fairgrounds. Riding devices and concessions will provide amusement for the Midway and there will be dancing in the large pavilion through the four evenings of the show.

New Buildings

In addition to building facilities of the Jackson County fairgrounds the board of directors undertook only such construction as was deemed necessary through experience of former years.

The educational building comprising 7000 feet of ground floor space and 3000 feet of balcony will be a long-felt need. School ex-

struction of a fine new building capable of housing a great multitude of the creatures which find southern Oregon so well suited to their culture.

A new roof and additional pens have been provided for the hog and sheep entries, approximately 9000 square feet being available through this improvement.

The temporary roofs on stock barns have been replaced by permanent ones.

All buildings on the grounds are now of a permanent nature, nearly all having cement floors, and with the recent application of coats of cream colored paint with blue trimmings and the entire plant presents an excellent appearance.

New Comfort Station

A large comfort station has been built opposite the Merchants building, with modern plumbing accessories and rest room with drinking fountain. Similar facilities have also been installed for women in the new stock pavilion.

A large force of men under the supervision of H. D. Turner will be kept busy until the fair starts, September 12th, completing the improvement work outlined by the board of directors for this year.

If you have not secured program list as yet, get one and pre-arrange in former years have been housed in temporary structures and subject to damage from inclement weather, will be attractively displayed in the new building especially adapted for the purpose.

The women's building has been re-arranged and enlarged with a view to convenience and additional space.

Automobiles and machinery will be adequately housed this year in the new pavilion, erected for the purpose, which covers eleven thousand square feet and has illumination and other features which will make this department of the exposition a popular attraction.

Stock barn construction gives an additional eight thousand feet for this most important division of the fair and overcomes previous objections to poor housing facilities for prize stock.

Importance of the poultry industry in Jackson county has been given recognition in the addition of 900 square feet to the poultry building and the installation of the most modern and improved exhibition coops.

The rabbit fanciers also have come into their own with the compare to make an exhibit of some kind at the fair.

The special days for the fair are:

Wednesday, Sept. 12, Grants Pass.

Thursday, Sept. 13, Medford.

Friday, Sept. 14, Ashland and public school day.

Saturday, Sept. 15, Grants and other cities and towns of county.

carefully salvaged and put through a reclaiming process. After sorting, they are run through a crusher and then placed in wire mesh baskets in a centrifugal motion machine which extracts practically 100 percent of the grinding oil.

This is filtered and used again. The crushed turnings are fed into a conveyor which carries them to a gondola railroad car ready for shipment back to the steel mills. Lowered freight charges result from the crushing. Unreclaimed, about twelve tons will go into a car; crushed, more than forty tons.

Fifteen carloads salvaged a month, or twenty tons a day. This reclaiming process has been in effect at the Oakland plant for several years. It is another instance of the efficient mass production methods which make possible so much automobile for so little money.

From bare frame to finished motor car in owner's hands in three days—might be the title of this piece. It is another story with a new angle on the high speed methods popularized by the automobile.

The principal character in the story is the Oakland Motor Car company, with several railroads and steamship lines interwoven into the theme.

The story begins on a recent Tuesday when the Pontiac division of the Oakland company had on hand scarcely enough car frames for a full day's output. Charles O. Miller, supervisor of purchases, got in touch with the supplies, the A. O. Smith company, of Milwaukee. They had the frames in stock. R. L. Reese, Oakland traffic director, got busy with the railroads. They promised every aid.

On Tuesday morning the frames were loaded at Milwaukee on a Chicago, Milwaukee & St. Paul and Pacific train. The Grand Trunk ferry brought them to Grand Haven, Mich., where the Grand Trunk lines held up a crack train more than two hours to get the shipment to Pontiac, Michigan with all possible dispatch.

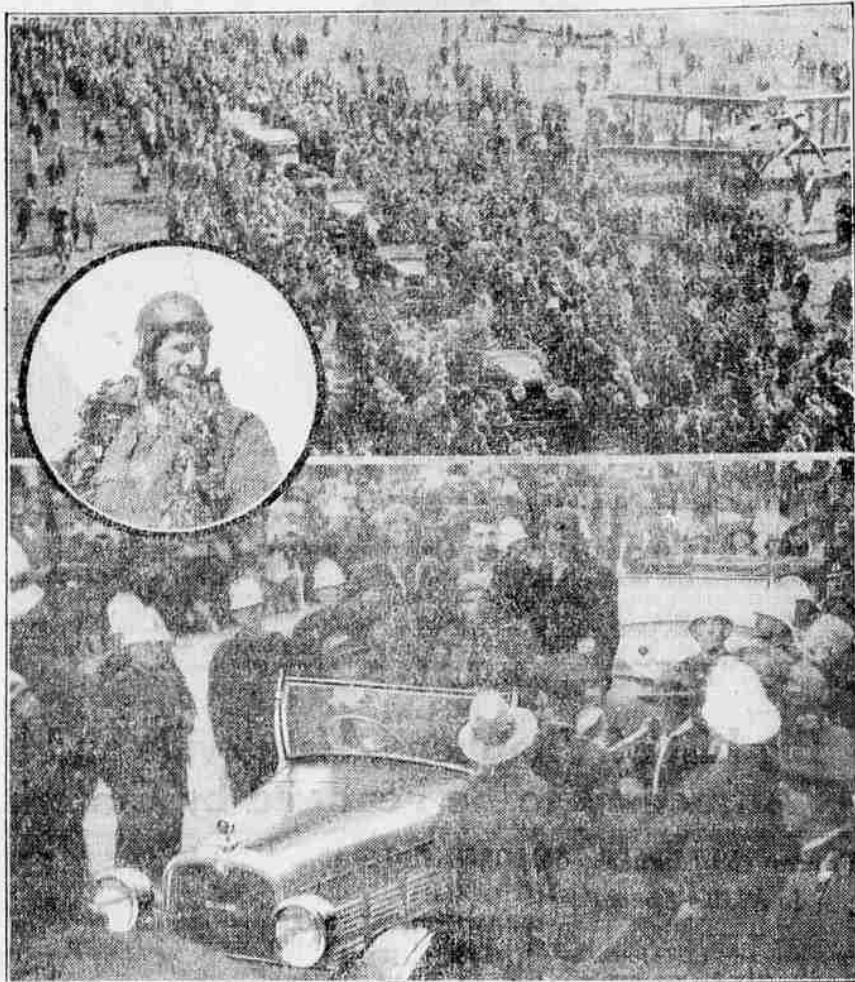
The frames arrived at the Pontiac factory on Wednesday, were immediately unloaded and lined up at one end of the assembly line where, in an hour, they rolled off at the other end completed cars.

The Holmstrom-Thompson company, Oakland and Pontiac dealers for Milwaukee, had sent in a hurry-up order for new Pontiacs. The cars were taken from the Pontiac production line to Detroit and there loaded on a Nicholson Steamship company boat on Wednesday afternoon.

The boat docked at Milwaukee on Friday morning, the cars immediately were delivered to their destination, arriving in the purchaser's hands by Friday noon—the cars built from the identical frames sent from Milwaukee on Tuesday.

Maker men have already subscribed \$96,000 toward a \$100,000 hotel.

Longest Flight Ends: Dodge Parade Starts



THOUSANDS of Australians greeted the victorious crew of the Southern Cross at Brisbane when that tri-motored plane completed its recent trans-Pacific flight from America. Captain Kingsford Smith and C. T. P. Ulm, the Australians, and Lieutenant Harry Lyon and James Warner, the Americans were the center of attraction in the Dodge Senior Six as shown below. The Americans are in civilian clothes. The crowd at the field is shown above. Inset is Captain Smith.

HOME EDUCATION

'The Child's First School is the Family.'—Froebel

Issued by the National Kindergarten Association, 8 West 40th Street, New York City. These articles are appearing each Sunday in the Mail Tribune.

ARE YOU TEACHING TRICKS?

Stella E. Fulton

"I saw an educated pig at the circus today and Emily Arkwright, 'And as I rode home I thought of the hours and days that the trainer had spent in teaching him those tricks, and I asked myself, 'What after all, does it all amount to?' He's only a pig in the end, after all, not really a more useful animal than the big Poland Chinas kept out on the farm. If his trainer were to let him be for a few months he would forget everything that he now seems to know."

"Then I came home and," says Emily, "I asked myself, 'What are the things that I do in my life in such a way that I am doing them without much success with the manners. And I said, 'Here I am, doing just what that animal trainer did. I teach tricks, and I'm a poor trainer at that. It's so discouraging!'"

"I know exactly how you feel," said her friend, Mrs. Wain. "If there is anything that is discouraging, it is to try to teach a child good manners. But, after all, my dear, with regard to the pig, the reason that his case is so hopeless, is that he is a pig and is not capable of reasoning. All the trainer can do is to get the pig into the habit of doing a certain thing in response to a signal of some kind. The pig doesn't think. He cannot will to follow a course of conduct and thus work with the trainer."

"But the child's case is much more hopeful because he can be led to see for himself what a very lovely thing true courtesy is and to wish to practice it. Then each little observance of good manners will spring naturally from that wish and not be a mere trick performed because the trainer demands it and not as he is concerned without sense or reason."

"I always tried to show my children that good manners were just the finest consideration for other people. I suppose that idea has never been better expressed than in the old rhyme:

"Politeness is to do and say,
The kindest thing in the hand-
ed way."

A person who truly considers other people will not go far wrong in matters of politeness.

"I tried to give the reasons for

MANY WHIPPETS ARE EXPORTED

With Whippet fours and sixes and Willys-Knight sixes showing the greatest domestic sales volume this year in the history of the company, executives of the John N. Willys Export Corporation declare that in the export field the products of the Toledo manufacturer are also experiencing the greatest buying demand ever registered in the foreign markets of the world.

A new all-time record was established for Willys-Overland in the export field in July when 5556 Whippets and Willys-Knight sixes were shipped from the Toledo plant of the foreign markets, an increase of 165 percent over the same month of last year.

Since the first of the year when

the drastic price cuts on the Whippet four were announced, the sales volume in the foreign markets started upward in the same proportion unaltered with each month showing an outstanding gain over the previous month, the total shipments for the first seven months exceeding that of any previous period.

"This year marks the most successful year for Willys-Overland in the foreign markets," John N. Willys, president of the John N. Willys Export Corporation, said. "Although Willys-Overland products have for years enjoyed a fine acceptance overseas, the present year's business is outstanding and far exceeds that of any other year."

"We have expanded our field selling organization materially during the current year with the addition of more distributors and dealers. There is no reason to believe that this fine business condition will reverse itself."

"Both the Whippet fours and sixes and the Willys-Knight sixes are experiencing the greatest buying demand ever registered in the foreign markets. This is the result of outstanding performance in competition with every type of motor car of both American and European make."

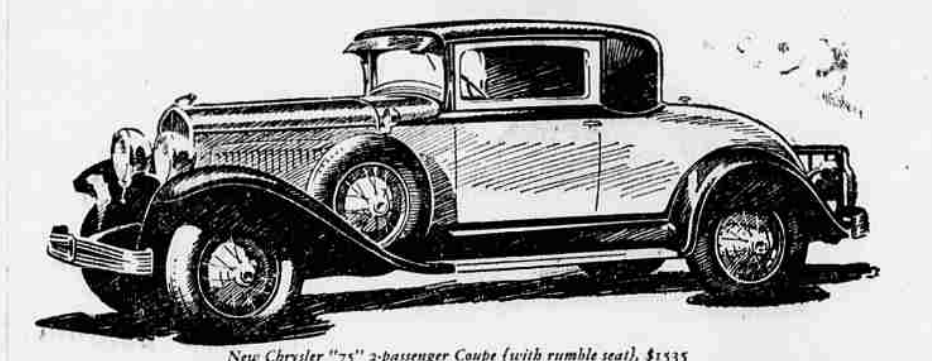
NEW STATION IN JAPAN
MAY SPUR RADIO SALES

WASHINGTON—(AP)—A 10,000-watt broadcasting station is operating in Kumamoto, Japan, Henry Hitchcock, U. S. consul, has informed the department of commerce. The new station has the call letters JOGK and broadcasts on 230 meters.

Mr. Hitchcock says it is expected that the new broadcasting facilities will increase the Japanese demand for receiving sets. Up to the present, few sets have been sold owing to the poor reception from stations over the mountains in central and eastern Japan.

TILLAMOOK—Tillamook County Creamery butter factory will cost about \$2,000.

CHRYSLER genius produces a wizardry of Style and Value



New Chrysler "75" 2-passenger Coupe (with rumble seat), \$1535 (Wire wheels extra)

IT IS PERFECTLY apparent that the new Chrysler "75" and "65," in the richness of their dress and the marvelous efficiency of their performance, reach upward and outdo cars far, far beyond them in price.

They are readily singled out by a host of distinctive features of the style that re-styles all motor cars—new slender-profile chromium-plated radiator, "arched-window" silhouette, unusual grace in the sweep of the "air-wing" fenders.

The new Chryslers also have the "Silver-Dome" high-compression engine using any fuel—counterweighted 7-bearing crankshaft—unusual safety and ease of internal-expanding hydraulic 4-wheel brakes, efficient in any weather, and Lovejoy hydraulic shock absorbers.

There is no wizardry in such additions of greater value—they have their source and

explanation in the solid, substantial manufacturing policy of Standardized Quality, initiated by and peculiar to Chrysler, which passes on to its cars of lesser price the quality features of its cars of highest price.

If there is the shadow of a doubt in your mind of the working-efficiency of this unique principle—closely compare the "75" and "65" with the best cars you can find selling for hundreds—yes, even a thousand dollars more.

New Chrysler "75" Prices—Royal Sedan, \$1535; 2-passenger Coupe (with rumble seat), \$1535; Town Sedan, \$1655. (6-Ply full-ballion tires.)

New Chrysler "65" Prices—Business Coupe, \$1040; Roadster (with rumble seat), \$1065; 2-door Sedan, \$1065; Touring Car, \$1075; 4-door Sedan, \$1145; Coupe (with rumble seat), \$1145.

All prices f. o. b. Detroit.

FITCH MOTOR CO.
128 S. Riverside Phone 762

PIRATE ISLE NOW OBSERVATORY FOR STUDY OF STORMS

WASHINGTON—(AP) From Swan Island, a tiny green speck in the blue of the Caribbean sea and once famed in pirate legends as the burial place of great treasure, radio will flash a warning of impending hurricanes.

The United States weather bureau has arranged with the Tropical Radio company for the establishment of a radio station on the island and the transmission of observations by the operator twice a day during the hurricane season, the months of August, September and October. In addition to the regular reports, special warnings will be broadcast regarding the location and location of storms.

Being northeast of Honduras and south of Cuba, the island is near the heart of America's hurricane breeding belt. It is in the path of many of the big storms which lash the Antilles, cause havoc to shipping and occasionally sweep on to the Gulf states. A wireless station operated three years ago by the Tropical Radio company was discontinued. At the request of the weather bureau this station is to be re-equipped.

A. L. Meggers, veteran radio operator and experienced weather observer, will be in charge. He and a mechanic, the only white men on the island, are setting up the plant. The only other human inhabitants of the island, which is a mile long and a half mile wide, are three West Indian negroes who gather coconuts for a fruit company.

Shavings Salvaged in Oakland Factory

There used to be a saying that the packing industry utilized every part of an animal but the squeal, yet even that doesn't give the packer the slightest advantage over the modern automobile manufacturer.

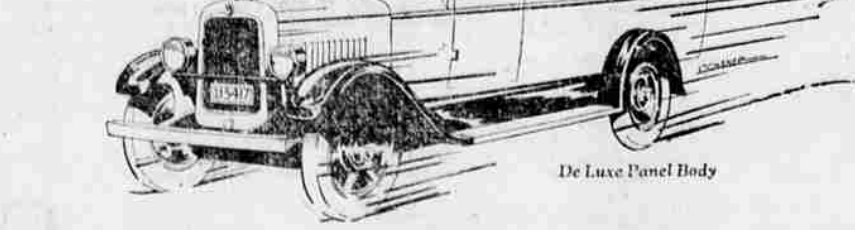
Visitors going through the plants of the Oakland Motor Car company, at Pontiac, Mich., have noticed small piles of machine turnings, or shavings, accumulating every few minutes under various machines used in the building of Oakland and Pontiac sixes. Several men go from place to place carefully shoveling these turnings into steel containers. Not one visitor in fifty thinks to ask what becomes of them, pre-supposing that eventually they reach the scrap heap.

The fact is these shavings represent potential automobiles. Far from being scrapped, they are

ALWAYS INVESTIGATE WHAT GENERAL MOTORS HAS BEFORE YOU BUY

GENERAL MOTORS TRUCKS

with **BUICK** Six Cylinder Engine
ONE-TON Complete as Shown
\$1495 f.o.b. Pontiac, Mich.



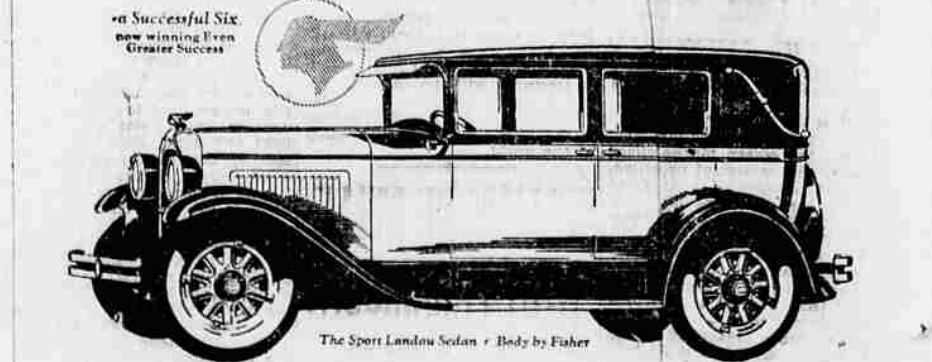
Powered by the Buick and Pontiac engines, General Motors fast duty trucks assure you a new type of performance. They speed up your deliveries. Increase your range of business. Lower your costs.

There is a General Motors six cylinder truck for every need in light and medium duty. Also Heavy Duty Trucks up to 15 tons capacity. By all means, investigate this most complete line!

HIGHWAY MOTOR CO.
123 So. Riverside Quality Cars Phone 254

A TRUCK FOR EVERY PURSE AND PURPOSE

ENRICHED in Color Enhanced in Style and Offering Even Greater Performance



Beautiful as Pontiac Six has been in the past—great as its performance has proved—today's Pontiac Six is even more beautiful, even more thrilling than ever to drive!

To the beauty and style of long, low bodies by Fisher, Oakland has added the swagger touch of smaller, smarter wheels and larger tires. Mechanical advancements rest in greater speed and poir. Until you have seen and driven it you cannot realize what style, what color and what performance today's Pontiac Six affords.

2-Door Sedan, \$745; Coupe, \$745; Sport Roadster, \$745; Phaeton, \$775; Cabriolet, \$795; 4-Door Sedan, \$825; Sport Landau Sedan, \$875; Oakland All-American Six, \$1045 to \$1205. All prices in factory. Check Oakland Pontiac delivery charges—they include lowest handling charges. General Motors Time Payment Plan available at Pontiac.

SANDERSON MOTOR CO.
SOUTH BARTLETT AND 8th STS. PNE 1385
Robinson Motor Co.—Ashland, Oe.
PONTIAC SIX
PRODUCT OF GENERAL MOTORS