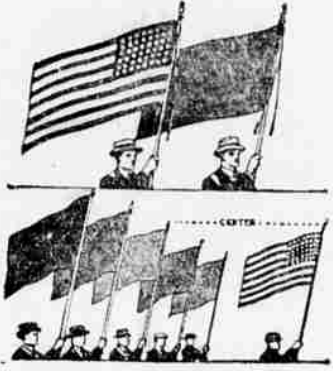


How to Respect and How to Display the Flag

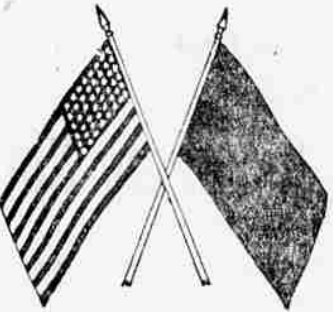
There are certain fundamental rules of heraldry which if understood generally, would indicate the proper method of displaying the flag. The matter becomes a very simple one if it is kept in mind that our National Flag represents the living country and is itself considered as a living thing. The union of the flag is the honor point, the right arm is the sword arm, and therefore



The point of danger and hence the place of honor.

1. The Flag should be displayed only from sunrise to sunset, or between such hours as may be designated by proper authority. It should be displayed on national and state holidays and on historic and special occasions. The Flag should always be hoisted briskly and lowered slowly and ceremoniously.

2. When carried in a procession with another flag or flags the Flag of the United States should be either on the marching right, i. e., the Flag's own right or when there

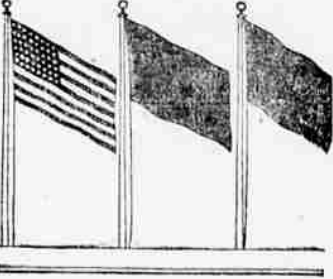


is a line of other flags the Flag of the United States may be in front of the center of that line.

3. When displayed with another flag against a wall from crossed shafts the flag of the United States should be on the right, the Flag's own right, and its staff should be in front of the staff of the other flag.

4. When a number of flags are grouped and displayed from shafts the Flag of the United States should be in the center or at the highest point of the group. (See diagram on next column.)

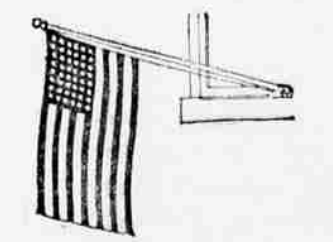
5. When flags of States or Cities or poli-



nants of societies are flown on the same halyard with the Flag of the United States, the National Flag should always be at the peak. When flown from adjacent shafts the Flag of the United States should be placed above or to the right of the Flag of the United States.

6. When flags of two or more nations are displayed they should be flown from separate shafts of the same height and the flags should be of approximately equal size. (International usage prohibits the display of the flag of one nation above that of another nation in time of peace.)

7. When the Flag is displayed from a staff projecting horizontally or at an angle



from the window, sill, balcony, or front of building, the union of the Flag should go clear to the head of the staff across the Flag is at full mast.

8. When the Flag of the United States is displayed in a manner other than by being flown from a staff it should be displayed flat, whether indoors or out. When displayed either horizontally or vertically against a wall, the union should be uppermost and to the Flag's own right, i. e., to the observer's



left. When displayed in a window it should be displayed the same way, that is, the union or blue field to the left of the observer in the street. When festoons, pennants, or drapings of blue, white and red are desired, festoons should be used, but never the Flag.

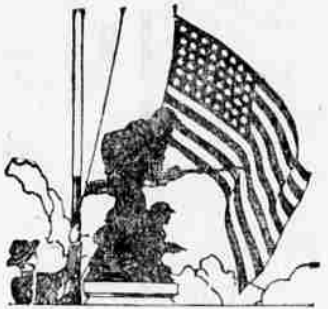
9. When displayed over the middle of the street, as between buildings, the Flag of the United States should be suspended vertically with the union to the north in and east and



west street or to the east in a north-south street.

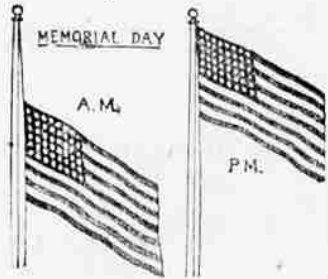
10. When used on a speaker's platform, the Flag should be displayed above and behind the speaker. It should never be used to cover the speaker's desk nor to drape over the front of the platform. If flown from a staff it should be on the speaker's right.

11. When used in unveiling a statue or monument, the Flag should not be allowed to fall to the ground, but should be carried aloft to wave out, forming a distinctive feature during the remainder of the ceremony.



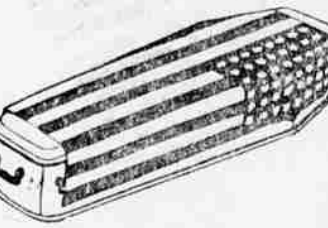
12. When flown at half mast the Flag is first hoisted to the peak and then lowered to the half staff position, but before lowering the Flag for the day it is raised again to the peak. On Memorial Day, May 30th, the Flag is displayed at half staff from sunrise until noon and at full staff from noon until sunset, for the Nation lives and the Flag is the symbol of the living Nation.

13. When used to cover a casket the Flag should be placed so that the union is at the head and over the left shoulder. The Flag



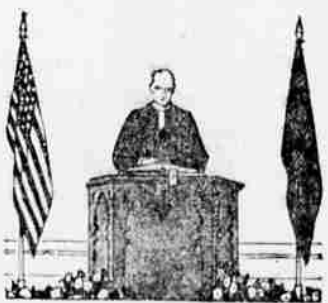
should not be lowered into the grave nor allowed to touch the ground. The casket should be carried first.

14. When the Flag is displayed in church, it should be from a staff placed on the congregation's right as they face the clergyman. The service flag, the state flag, or other flag should be at the left of the congregation. If in the church the Flag of the United States should be placed on the clergyman's right



as he faces the congregation and other flags on his left.

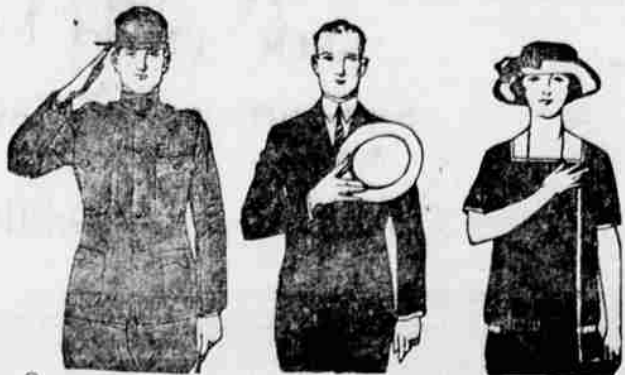
15. When the Flag is in such a condition that it is no longer a fitting emblem for display it should not be cut aside or used in any way that might be viewed as disrespectful to the national colors, but should be destroyed as a whole, privately, preferably by burning or by some other method in harmony with the



reverence and respect we owe to the emblem representing our country.

CAUTIONS

- 1. Do not permit disrespect to be shown to the Flag of the United States.
2. Do not dip the Flag of the United States



How to Salute the Flag and the National Anthem.

to any person or any thing. The respectful color, state flag, organization or institutional flag will render this honor.

3. Do not display the Flag of the United States with the union down, except as a signal of distress.

4. Do not place any other flag or pennant above or to the right of the Flag of the United States.

5. Do not let the Flag of the United States touch the ground or trail in the water.

6. Do not place any object or emblem of any kind on or above the Flag of the United States.

7. Do not use the Flag as drapery in any form whatever. Use hunting of blue, white and red.

8. Do not fasten the Flag in such manner as will permit it to be easily torn.

9. Do not drape the Flag over the hood, top, sides or back of a vehicle, or of a railway train or boat. When the Flag is displayed on a motor boat, the staff should be affixed firmly to the chassis or clamped to the radiator cap.

10. Do not display the Flag on a float in a parade, except from a staff.

11. Do not use the Flag as a covering for a ceiling.

12. Do not use the Flag as any portion of a costume or of an athletic uniform. Do

not embroider it upon cushions or handkerchiefs or print it on paper napkins or boxes.

13. Do not put lettering of any kind upon the Flag.

14. Do not use the Flag in any form of advertising nor fasten an advertising sign to a pole from which the Flag of the United States is flying.

15. Do not display, use or store the Flag in such a manner as will permit it to be easily soiled or damaged.

PROPER USE OF BUNTING. Bunting of the national colors should be used for covering a speaker's desk, drapery over the front of a platform and for decoration in general. Bunting should be arranged with the blue above the white in the middle and the red below.

SALUTE TO THE FLAG. During the ceremony of hoisting or lowering the Flag or when the Flag is passing in a parade or in a review, all persons present should face the Flag and stand at attention and salute. Those present in uniform

should render the right-hand salute. When not in uniform, men should remove the head-dress with the right hand and hold it at the left shoulder. Women should salute by placing the right hand over the heart. The salute to the Flag in the moving column is rendered at the moment the Flag passes.

When the National Anthem is played those present in uniform should salute at the first note of the anthem, retaining this position until the last note of the anthem. When not in uniform, men should remove the head-dress and hold it as in the salute to the Flag. Women should render the salute as to the Flag. When there is no Flag displayed, all should face toward the music.

54788 - A Napoleon who gets in some to rip up history instead of being the American corporation or as modified by the author.

Rescued Liberty With Hero... general before he is a captain and... must be shown in its original form... Medford—Crater Lake Gateway.

Welcome Legionnaires



It is a pleasure to welcome members of the American Legion and Women's Auxiliary to Medford and the Rogue River Valley—the home of world-famous pears and apples.

CONSIGN TO—SELL THROUGH

Simons, Shuttleworth & French Co.

Incorporated

MEDFORD, OREGON

GUY W CONNER, Mgr.

402 SO. FIR STREET

Branch of Simons, Shuttleworth & French Co., New York

Phone 1400

Exporters, Importers, Domestic Distributors, Fruit and Vegetables

SIMONS & CO., LTD., Glasgow, London, Liverpool, Southampton

Represented in all Principal Canadian and European Cities



Legionnaires and Ladies' Auxiliary Members

WELCOME

"TO THE PEAR CITY"

- If you are going fishing
-If you are going to play golf
-If you are going swimming
-If you are going to play tennis
-If you are going boating

or

-If you want information of any kind be sure to stop in at

LAMPOR'S Sporting Goods and Hardware

226-230 E. Main St.

WE CARRY A COMPLETE LINE OF SPORTING GOODS