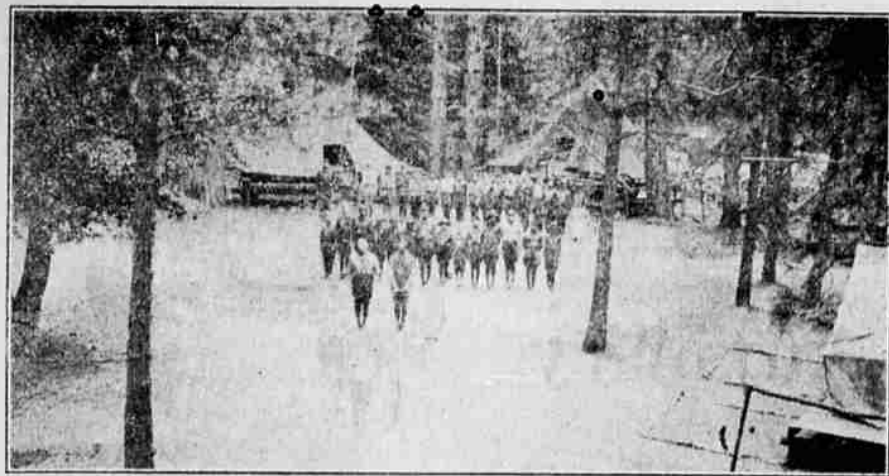


### Medford Post 15 Backs Boy Scout Movement



Medford Post No. 15 has done much to further the Boy Scout movement in this city and much of the credit for the success of local Scout activities may be attributed to the efforts of Legionnaires here. The Scout camp on Applegate was established by the Medford Post and Legionnaires erected some of the structures. The accompanying photograph shows a glimpse of the beautiful camp with the Scouts lined up for parade.

### How to Hang the Flag

Which is the right hand side of the American flag? When is it proper to fly the flag upside down? Must the flag be taken in at night? How about sending soiled flags to the laundry? These and numerous other questions concerning Old Glory and its proper display which the approach of Flag Day has stirred up are answered for a perplexed public in an "outline of flag etiquette," just received from Army headquarters by Sergt. Grover C. Owen, in charge of the Army Recruiting station at Medford.

The "outline" is announced as a code of flag ethics based on good taste and certain fundamental rules of heraldry and is designed to meet the evident desire on the part of the general public to fittingly show its respect for the American flag through approved methods of display. The code is merely suggestive, however, as the Army is without authority to prescribe rules for observance by the public, Sergt. Owen explained.

Most of the apparently intricate questions of order of precedence, the Army code says, are easily answered when it is recalled that the flag represents the living country, it being itself considered a living thing. As such it takes precedence over all other flags, standards, and emblems.

Next to order of precedence, the greatest source of confusion to the public is the designation of right and left sides of the flag. This follows heraldic practice. In heraldry the right arm is the sword arm, and therefore the point of danger. Hence it is also the place of honor. As the stary field is the honor point, the staff edge of the flag is always designated as the flag's right. A simple rule is that the heraldic right of a properly displayed flag is always the observer's left.

Here is the Army's outline of flag etiquette:

There are only two ways to display the American flag properly. One is to fly the flag freely unfurled from a staff. The other is to hang the flag flat, with its full horizontal or vertical length falling evenly.

When hung on the wall the flag should be hung either horizontally or vertically, with the stary field at the top and to the heraldic right, which, be it remembered, is the observer's left.

At crossed staffs with another flag, the American flag should be on the observer's left, with its staff in front of the staff of the other flag.

In a cluster of flags, Old Glory should be in the center of the highest point of the group.

When carried in a procession, the American flag should be either on the marching right of all other flags, or if there is a line of flags, the National flag should be in front of the center of that line.

On a staff projecting from a window, the American flag may be hung either horizontally or at an angle, with the stary field clear of the truck, as the peak of the staff is called.

Suspended between two rows of buildings so as to hang over the middle of a street, the flag should be hung vertically with the stary

field to the north in east-and-west streets and to the east in north- and south streets.

Whether indoors or out, the flag should never be festooned over doorways or arches, tied in a bow, knot, or fashioned into a rosette or draping. For these purposes burning of the national colors is more appropriate, and since the stary field is the honor point, the burning should be arranged with the blue uppermost.

On a speaker's platform the flag, if not flown from a staff, should be displayed flat and placed above and behind the speaker. If on a staff it should have the position of honor, at the heraldic right, or observer's left.

When other flags are flown from the same staff, the American flag is always at the peak. When flown from other staffs, the National flag is hoisted first and lowered last.

When flags of two or more nations are displayed, they should be flown from separate staffs and all flags should be approximately the same size. International usage forbids the display of the flag of one nation over that of another in time of peace.

With several staffs in use the American flag should be flown from the staff on the extreme heraldic right, or observer's left.

In hoisting the American flag should be run up briskly. It should be lowered slowly and ceremoniously. The Army sees no objection to flying the flag at night over civilian property, if otherwise appropriate. It should not, how-

ever, be used for advertising purposes.

When flown at half-mast, the flag should first be run to the top of the staff, and then lowered. Before finally lowering for the day, it should be run to the truck.

At unveiling ceremonies the flag should form a distinctive feature of the program, but should not be used as a covering for the statue.

As a signal of distress at sea the flag is displayed with the stary field down.

The use of the flag for athletic uniforms, handkerchiefs, napkins, or other form lacking in dignity and respect, while not strictly a violation of law, are gross abuses of the National colors and offend all persons of patriotic feeling.

When the flag becomes soiled, it may properly be sent to the laundry. Laundering of the flag however, may be done with more reverence in one's own home.

There is an old army custom which affords an opportunity to do reverence to Old Glory whereby damaged and tattered flags are withdrawn from active service. According to this custom the blue field is cut from the flag. Then the separate pieces of the flag which is no longer a flag are cremated and the ashes scattered over the parade ground.

### Transportation Chairman



HARRY MOORE

The difficult task of handling the transportation problem for the Legion convention is being successfully handled by Harry Moore, transportation chairman, and his committee. Mr. Moore is a member of the California Oregon Power Company organization.



Evening clothes must be cleaned and pressed perfectly—the only way every garment entrusted to our care is handled. We make evening clothes and all other kind look their best.



### MEDFORD AIRPORT WILL SOON BE A BLAZE OF LIGHT

PORTLAND, Ore., Aug. 2.—(AP)—Work of lighting the airway between Seattle and San Francisco will be started immediately, and within four or five months pilots will be able to fly by night and hold the course easily by means of beacon lights placed at inter-

vals of not more than ten miles. Such was the announcement made yesterday by S. S. Boggs of Washington, D. C., airway extension superintendent for the United States department of commerce. He is in Portland to supervise the work.

The aim of the commerce department is to aid every element of solely to commercial flying, he said. Beside establishing the beacons, the department is surveying the airway and will make sure that intermediate landing fields are available at least every 25 miles. Where the fields are not provided by towns along the way, the government will lease land and establish the landing places.

Standard beacons used are the 7 1/2-inch revolving type, 3,000,000 candle power. Towers are 51 feet high. The beacons are established every ten miles in country flat enough to afford reasonable visibility. In mountainous country a beacon with 500,000 candle power is placed every three miles. In country where trees about towers are built as high as 100 feet.

The same amount of precaution is taken in placing of landing fields. A field every 25 miles is sufficient in comparatively safe country, but in mountainous country or other regions where conditions are difficult, landing fields are laid out as little as five miles apart. To facilitate night landings a standard beacon is placed at every field, even the intermediate ones, and a boundary light will be placed at three-mile intervals. A revolving light with 300,000 candle power is placed every 300 feet around the entire field.

The first stage of the work will be a survey of the airway between Portland and Seattle. Landing field locations will be determined and where necessary the government will lease sufficient ground for the fields. Then beacon sites will be determined and the beacons installed. Mr. Boggs said that the route between Portland and Seattle will probably be lighted completely before winter. He anticipates that landing fields will not have to be established closer to each other than 25 miles between Seattle and Medford, but just south of Medford fields will be closer, and the range lanterns will be placed at three-mile intervals.

Lighting of the transcontinental

airway between New York and San Francisco has just been completed. Mr. Boggs is confident that the lighting of the various airways will greatly stimulate commercial flying and particularly passenger travel. In fact, he reports, passenger travel has developed almost unbelievably in the east during the past year.

**Worms Way to Camp**  
WASHINGTON, D. C.—(AP)—Mildred Cliff, 11, lacked the \$3 to attend the Nevada junior farm business camp here. She arranged with Katherine Lewers, University of Nevada art teacher, to dig worms for the latter's prize ducks at five cents a dozen. When the camp opened she had the money.

**Hundreds of sportsmen hunt**  
and pheasants in the valley.

# Welcome Legionnaires



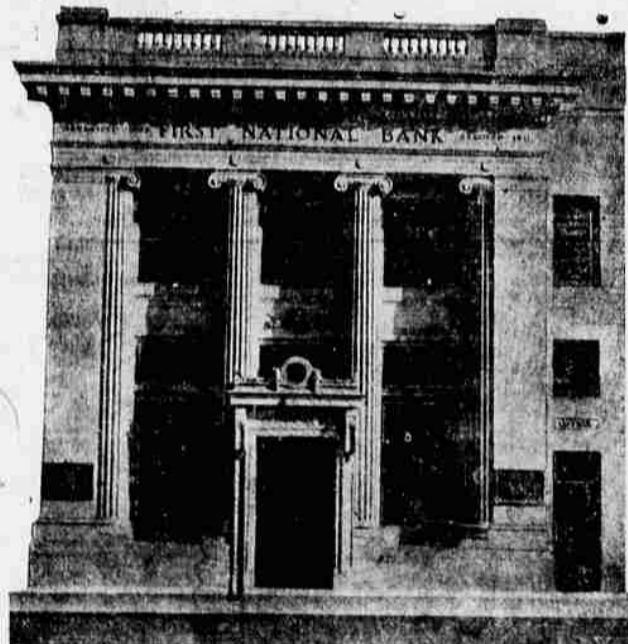
We take this opportunity to call your attention to

## OUR GROWTH

which has been continuous and substantial invites the patronage of others seeking an institution of sound and proven financial background.

## Do Your Banking Business Here

All forms of banking service are provided by the First National. You will find this bank to be convenient, efficient and having the facilities to enable you to do your business in a minimum of time.



### Our Safety Deposit Vaults

Are up to date and as safe as modern science can make them

Every Family Should Own a Safety Deposit Box

### Departments

- SAVINGS
- CHECKING
- SAFETY DEPOSIT
- BONDS
- COLLECTIONS
- FOREIGN EXCHANGE

Our board of directors is composed of the outstanding business men in Medford and this vicinity—men who are successful in their own line, and always ready to devote time to their duties here.

# The FIRST NATIONAL BANK

in Medford, Oregon

Resources Over \$2,500,000.00



## Welcome

Legionnaires and Legion Auxiliary

"This Is a Great Country

AND



is a good place to buy your Ready-to-Wear, Millinery, Hosiery and Novelty Slippers