

GRAHAM-PAIGE AGAIN BREAKS ALL RECORDS

Production for the Graham-Paige Motor Corporation in June, for the fourth month in succession, exceeded all previous records in the 12 years history of the factory, with a total of 1,279 cars, an increase of 215 over May. The number of cars shipped was 875, for a new all-time record, exceeding May by 117.

At the end of June, not six months since the new line of Graham-Paige cars was introduced, January's total production attained 10,000, more than three times the total of 31,499 for the first six months of 1927. The entire production last year, 21,881, has been exceeded in six months this year by 16,644 cars. Shipments for 1928 totaled 24,621 at the close of June.

A new record for a single day's production was established June 26, when 415 cars were built.

Graham-Paige production for 1928, month by month, has been as follows: January 1487; February 5018; March 7619; April 5275; May 8211; June 1279.

NOTED PILOT IN AIR TOUR

Alger Graham, Pilot of the Buhl Airster in the 6,200-Mile National Air Tour.



As a company with many of the country's foremost pilots, Alger Graham is competing for the Edsel Ford Trophy, given to the manufacturer of the winning plane, and, incidentally with other pilots, for the \$1,000 Monarch Coffee Award.

Graham has been an airplane pilot for twelve years, during which time he has had a number of adventures (a few in a life-time). His flying experience began with the Royal Flying Corps in the Western Front. Back in the United States after the war, he was associated with Eddie Stinson for three years, then went south for the cotton dusting operations in Georgia and Louisiana.

In 1927 came his greatest adventure, when he was selected to accompany Wilkins on his Arctic Expedition. Graham made three round trips from Fairbanks, Alaska, to Polar Barrow, every trip fraught with the greatest perils.

TWO MILLION CARS BUILT BY WILLYS

The 2,000,000th car to be built by Willys-Overland came off the assembly line on July 7th. The car was a Willys-Knight standard six-cylinder, six-speed, four-door model, and the first Willys-Knight model to be priced below \$1,000.

The 2,000,000th car comes in the shape of the greatest six-cylinder production record in the history of the company, it six months production which has exceeded total production for any previous twelve-month period in the company's history, and which exceeded the total for the entire 12 months of 1927 by a wide margin. The previous record for a twelve-month period was 1,875,000 cars, which were produced in 1926.

Production for this year, up to the end of June, was slightly in excess of 2,000,000 units, with all previous monthly production records being broken in March, April and May.

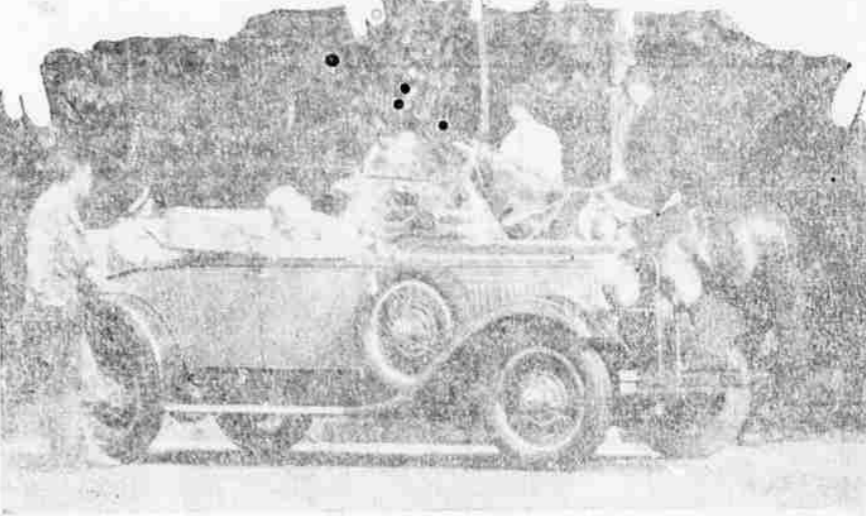
At a recent convention of the heavy machinery group of the motor industry, and speaking in that place in a complimentary tone for the first six months of this year, Willys-Knight pointed out that 1,000,000 a year mark in 1926 when this figure was exceeded by 2,275,000 units giving a total production for that year of 11,275,000 cars.

Statistics toward the 2,000,000 total production figure and toward the present record, including 32 months' production, started on January 1st, when a contractual order was announced on the Willys-Knight factory, and production was resumed by the manufacturer in a new and improved, the entire Willys-Knight line of cars, with a competitive price level with the lowest price ever in the industry.

A few days later the Willys-Knight standard six-cylinder model was placed on the market for the first time in the history of this car.

This was again followed a few weeks later by the announcement of the Willys-Knight six-cylinder, four-door model, which has a total production for the month of January of 12,614 units. Factory floors were stepped up with great rapidity to a May total of 42,000.

Horsepower? It's Two Against All You Want



SUMMER days and country highways call this new Dodge Brothers Victory Six sports roadster along Old Dobbin's trail. The roadster just announced is available in many color combinations with nickel plating giving its sweeping, graceful lines a final dash of smartness. Standard equipment includes trunk rack, and two spare wire wheels and tires mounted on the front fenders. The car is priced at \$1,245.

Household Hints

When making up, dry-cleaning a small quantity of rolled oats as breakfast. It gives an excellent garnish, adds a touch more white to the diet and is especially suitable for children who rebel against eating cereals of the whole-grain, whole-wheat bran variety.

A small fact that is little known, but very interesting, is that if you eat a few raisins, you will find that they are very good for you. They are full of iron and other minerals, and they are very good for you. They are also very good for you.

Deepen Seine Channel

HAVERLE—By "The Union des Pêcheurs de la Port de Rouen," or "Union of the Port of Rouen," are seeking to have the Seine channel deepened so that 18,000-ton ships can proceed direct to the port of Rouen.

Four-hundred workers are now working on the project, and it is expected that the channel will be deepened to a depth of 18 meters by the end of the year.

UNION OIL BUILDS OAKLAND PLAN

Involving an expenditure that will exceed \$100,000 the Union Oil Company has approved plans for the construction of a new safe distributing station and office building for its employees at Oakland, according to its announcement issued yesterday by J. M. Gray, manager of sales.

The new sales plant will cover an entire city block, and will be erected on property owned by the oil company. It will supplant the present distributing station which has served the Union Oil Company in Oakland for the past fourteen years, but which is now considered inadequate for the present needs of the oil company in that locality.

The most modern equipment in office marketing facilities will be incorporated in the construction and the station, when completed will be one of the finest of its type and size on the coast.

Pipe lines will connect the station with the water front so the stocks can be delivered direct into storage from barges that carry their cargoes at the company's refinery at Suisun on San Pablo Bay.

Storage will be provided for approximately 16,000 barrels of gasoline, lubricating oils and other refined petroleum products.

Among other facilities provided for in the plans are a garage, 7 feet by 24 feet; a clubhouse, 7 feet by 18 feet; pump house and a six truck loading rack.

Construction is slated to start within the next few days, with completion scheduled for early in September.

Direction of the new plant will be under the direct supervision of the company's engineers. It is understood, however, that local will be used wherever possible.

HIGHWAY CONDITIONS

The Dallas-California Highway.—Tourist travel has at last found the Dallas-California highway and a rapidly increasing volume of traffic is being sent south. The road from Dallas to Elkhart Falls is in excellent condition and is the finest road in the state, it being possible to maintain the speed limit under all conditions of weather throughout the entire length of the road. This road is almost universally used as one part of a loop trip by the California tourists.

Roosevelt Highway.—Few people know that the Roosevelt highway contains eight miles of road between Newport and the Siletz river which is said to be the most scenic eight miles of highway in the United States. This section of the highway, known as the "Other Coast-Hokey" section of the road, is just becoming known to motorists, and a rapidly increasing tourist travel is moving along this road to see this concentrated eight miles of beautiful scenery. From Astoria to Newport, the Roosevelt highway is in excellent condition. From Newport to Hoodport, the highway is in excellent condition and is being made or better roads used. From Hoodport south to the state line, the highway is completed and in excellent condition. Ferries in this section cross the Empson river, Coos bay and the Rogue river.

Roads to Romance with Jack and Etty!

Being the original letters of a young wife on her honeymoon moon over the Pacific Coast to the girl-friend back home.

Dear Marion and Jim:

Well, we've been in Los Angeles for a week! And I'm just now getting used to the weather. It's just what we needed. The weather is just what we needed. The weather is just what we needed.

They told me that one out of every three people who get out of the West are back here. I'm not sure about that, but I'm sure I'm not the only one who's back here.

But what a place this is. They look down here, of course, but see how they play too. Just a wonderful view. The mountains are just what we needed. The mountains are just what we needed.

I always will remember Hollywood especially. I'm just like being behind the scenes, though I expect it doesn't seem very far behind the scenes for an actor. I wonder how I would feel if I were a girl just breaking in or trying to break in to the movies and knew I had to compete with all the pretty girls we saw and it looked so easy, but just hopeless for poor little me. But Jack said, "Don't be a fool. You'll be in it, that's what he would take me in preference to any of the other girls. I'm just a pretty baby to be married and on a honeymoon with the grandest man that ever was even though he isn't a movie star."

My impressions of Los Angeles are somewhat confused because we had such a whirl of activity and excitement and activity the whole week. It's just what we needed. It's just what we needed.

ETHYL.

37 E. 10th, North St. Jack just came in to tell me. Coming to Portland by connecting tomorrow morning. Will write again soon.

SEE BALLOON TIRES

| | |
|---------|---------|
| 29x4.40 | \$ 8.50 |
| 30x4.50 | \$ 9.45 |
| 29x4.75 | \$10.70 |
| 30x5.00 | \$11.45 |
| 31x5.25 | \$13.75 |
| 32x6.00 | \$16.25 |
| 33x6.00 | \$16.60 |

Lee Conshohocken Tires

Phipps Auto Park Service
Highway at Jackson St.

Carefully Graded Lumber



means you get just what you pay for. There's a lot of comfort in knowing that your lumber came from a concern with a reputation too good to risk by careless grading. We always try to give our customers the benefit of the doubt. If a board is a "tolerable first," it's a "second" with us, and so graded and priced. Ask the carpenters.

Woods Lumber Co.

"Back to the Woods"
711 East Main Telephone 108

68/78 MARMON

MARMON ANNOUNCES THE APPOINTMENT OF HIGHWAY MOTOR CO.

123 South Riverside Phone 254

AS DEALERS FOR THE NEW MARMON LINE OF STRAIGHT-EIGHTS

THROUGH this company Marmon introduces its complete new line of straight-eights—providing a really distinctive mode of transportation and marvelous performance at moderate cost.

The New Marmon 78, at \$1895 (f. o. b. factory), is a car of 120-inch wheelbase, but with the roominess heretofore considered possible only on a wheelbase of 130 inches, or more. The motor is a straight-eight (built by Marmon) developing 86 horsepower and giving a top speed of 70 to 80 miles per hour. Six body styles.

The New Marmon 68 is the first straight-eight at the price of a six—a car of genuine Marmon quality, combining the spectacular in performance with real individuality and charm at the price of a six—\$1395 (f. o. b. factory). Three body styles.

We extend a hearty invitation to see and try these two new cars.