



Why don't they make hinged windshields for drivers to go thru without breaking the glass?

Motorcycle cop: "Here, you pull over."

Automobile: "What's that?"

M. C.: "You were doing fifty."

Automobile: "Will you write that down and sign it so I can show it to my friends?"

The race is getting healthier, authorities say—but not the race to the railroad crossing.

An Automobile Story

Franklin Stanley Mack was a gardener at the old Saxon Castle of Willis St. Clair on the Hudson. He wanted some flint to light a fire for the Saxon knight...

Anyhow, you don't hear any more Ford jokes.

Nearly every home has an automobile these days, even though the home is unorganized.

When the driver in front holds out his hand, he at least affords you opportunity to exercise your ability as a mind reader.

Ford would be all right for president. The country needs a shuffling up, besides he has the making of another Lincoln.

If it is true, as dentists claim, that so much time spent in auto-mobiling is causing people to neglect their teeth, dentists might recoup their business by hanging out signs which read, "Filling Stations."

Only a few autos have rumble seats, but most everyone has a rumble seat.

"You say financial troubles brought you here?" asked the hospital visitor. "Why, that's hardly possible."

"It's a fact, though," retorted the patient. "I was crossing to the other side of the street to avoid one of my creditors and saw another creditor on the other side. While I was trying to escape, a car hit me."

Highway Song
Gly to bed
Gly to rise,
Such is the life
Of the garage boys.

Strangers—"I represent a society for the suppression of profanity. I want to take profanity entirely out of your life and—"

Home: A place where people take a little nap after midnight while the motor cools.

You can't tell. Many of those killed at railway crossings might have taken medicine without reading the label, anyway.

Copyright, Moss Feature Synd., 1527 K St., N. W., Washington, D. C.

Survey Conducted By Chiropractors

The American Chiropractic Association, through committees appointed in each state, recently conducted an investigation to determine the number of people in America who are or have been under chiropractic treatment.

It was announced today by Dr. H. P. Coleman, of this city that the figures furnished as a result of this investigation shows that an excess of twenty-six million people have been or are at present under chiropractic care.

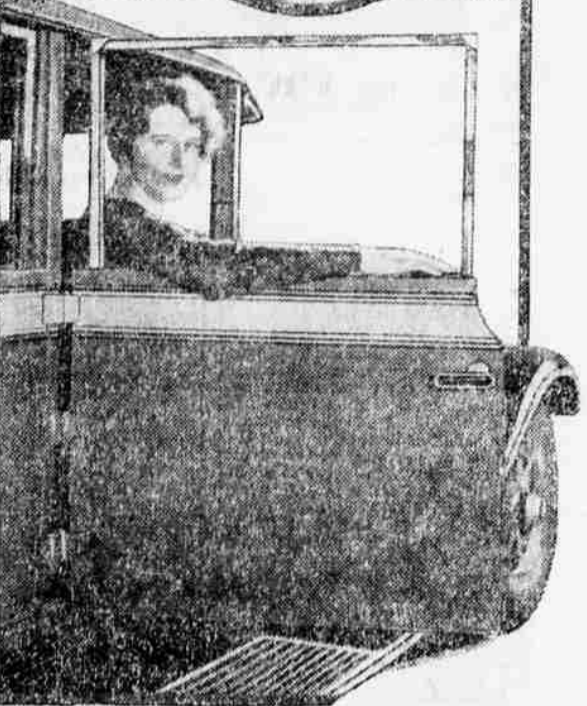
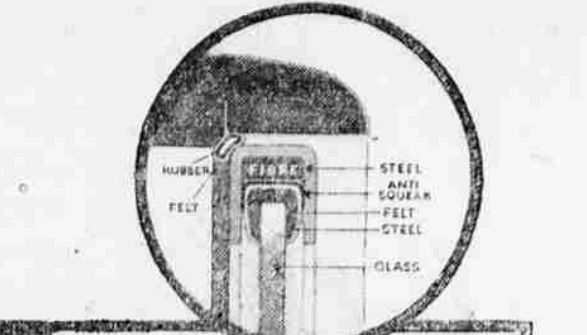
A complete report as to the investigation will be presented at the 1928 convention of the American Chiropractic Association which will be held in Yellow Stone National park the latter part of August.

All Chiropractic physicians in Medford and vicinity that are members of the association expect to attend the convention.

Competition in Pearls
BOMBAY—(AP) Pearl merchants have expressed concern over the introduction of cultured pearls into world markets. Protective legislation has been sought in favor of the genuine pearls.

Unique Doors on De Luxe Hudsons

SILENCE AND DISTINCTIVE APPEARANCE OBTAINED



A new type door on 1928 de luxe Hudson cars. The upper part consists of a metal frame to retain the glass. It is chromium plated.

Doors in motor cars usually have been—just doors. In the efforts of automobile engineers to step ahead of the competitive procession, virtually every other unit of design has undergone radical changes, but doors have not varied much from those of 18 years ago.

For the 1928 season, however, the Hudson organization has worked out interesting new door development in the Hudson superior de luxe models.

Three Main Objects
"For these cars, Hudson designers went after three major points," said E. E. Armstrong, of Armstrong Motors, local Hudson Essex dealers. "First the door should be permanently sealed. Second, they should assist a distinctive and modish appearance, and third they should be staunch and weather-tight."

"The usual idea of an automobile door has been to hold it heavy and strong, and to fit it closely and snugly to the body—the closer the better." But in these bodies another line of thought altogether is followed. The lower half of each door is of standard design—heavily constructed and fitting tightly. But above the belt line the structure consists only of a strong but slender steel frame to hold the window glass in place.

Those Inaccessible Wrists
Any mother who has a small boy in her family knows what a task it is to get him to wash above the wrists. He comes back from the wash bowl with clean hands, but with a dreadful rim of dirt where the washing stopped.

New rain may be partly the small boy's fault, and may be partly his mother's. Have you made it reasonably easy for him to get beyond the wrist line? If he has to push up his jacket sleeves and then his blouse sleeves to get at

SAILORS RESCUED OFF LONELY ISLE IN FAR PACIFIC

CAPE TOWN, South Africa (AP)—The little sealing steamer Kildalkey has returned here with 42 persons rescued from a "Robinson Crusoe" existence on the bleak and barren island of Kerguelen, on the hill fringes of the Antarctic.

The salvaged group, which includes two women and one child, is the crew of the wrecked sealer Logere, and was marooned for three weeks.

The Logere, a French steamer, hunting with the oil which weeks of ocean hunting had gained it, was preparing to return to Havre when it struck a submerged rock off Kerguelen and broke its back. Broadcasting a call of distress, the captain got his crew to shore and awaited relief.

Commander of the Kildalkey at Cape Town hearing the distant call for help, hastily provisioned their ship and sent it across the wild wastes of the South Indian ocean to the inhospitable island. Moun-tainous waves hammered the little 300-ton Kildalkey. Its chief engineer was killed when the sea's violence hurled him down a coal bunker.

Meanwhile the company from the French steamer occupied two hours which previous squatters had built on the island and eked out their ship's stores with sea-fowl and such vegetation as they found. Kerguelen is 1,480 square miles in area, but is largely a mass of bare peaks thrusting up out of the sea, the highest being 6,120 feet.

On the volcanic rocks the foraging mariners found patches of tough grass, coarse ferns and lichens, of little use for food, but they encountered one plant which proved a boon to their distress. This was the "land cabbage," peculiar to Kerguelen, much like the common cabbage, but yielding an essential oil which proved to be wholesome and sustaining food for that cold, damp climate.

One bit of tragedy marked their unwilling stay. Three men seeking seals for eating were overtaken by a blizzard. One of the trio dropped on the bleak slopes and was frozen to death.

The "Isle of Desolation" has had infrequent visits from man since its discovery by a French explorer in 1772. Captain James Cook, the celebrated English discoverer, visited his sea-lodge there in 1772, occasionally it has been used by sealing and whaling-ship enterprises. In late 1873 and early 1875 it was invaded by expeditions of astronomers from the United States, England and Germany for observation of the transit of Venus across the face of the sun.

Mr. and Mrs. Fish Hawk Prove to Be Real Golf Birdies

WILLOWOOD, N. J., July 14.—(AP)—A controversy over a liability at the Willowood Golf club is ended. Mr. and Mrs. Fish Hawk, who had their home in a tree bordering a fairway, attracted much attention. Some par shooters wanted them banished. Many nature lovers objected. A caddy looking for a lost ball found it with six others in the nest. Now there is unanimity about the necessity for exile.

New Pulp Mills, CAMPBELLTON, N. B. (AP)—J. B. Baxter, premier of New Brunswick, has announced plans for the expansion of the pulp and paper industry within the next few years, involving an expenditure of \$20,000,000 to \$40,000,000. Three new mills will be erected in the northern part of the province.

Farm Pointers

Average crops of alfalfa hay, wilted in the swath, will cure almost as quickly in side-delivery rake windrows and when left to fully cure in the swath the hay is much superior if raked. A side-delivery rake is considered an essential machine in the production of high grade alfalfa.

One farmer, operating a road-side stand for the sale of honey, catches the eye of the motorist with seven bee hives attractively spaced on the lawn near his stand. The hives are painted white and on each is a large letter, which, read with the others, spells "Bee Honey." Other farm products might be advertised advantageously by modifications of this idea.

If slugs or snails are troublesome in the Vegetable or flower gardens the first step for control should be the removal of all decayed boards, debris, twigs and old flowerpots which serve as hiding places. A boiled potato sprinkled with white arsenic or Paris green is a good bait. In case of slugs, the masses of translucent yellowish eggs usually deposited in dark and damp locations should be collected and destroyed.

Hops need plenty of shade in warm weather. If hop bushes are high and have plenty of ventilation they may be used. If not, burlap should be locked out. A hop will find shade if he can, but if it is to realize it, and will stay and die from overheating. If trees are not available, artificial shade should be provided by covering a cheap framework, about four feet high, with burlap, hay, or straw. It is better than if covered with boards or sheet iron.

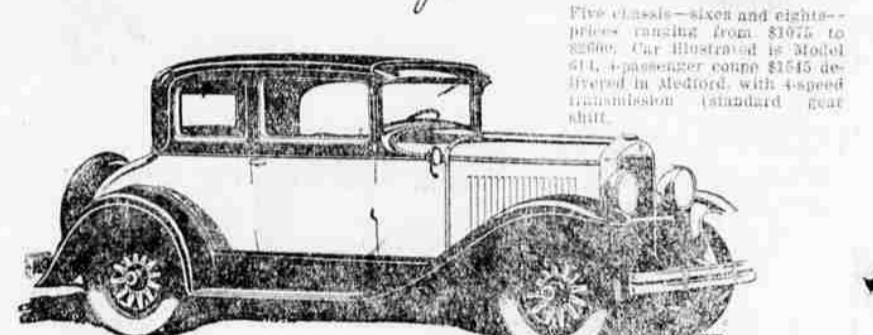
Based on ability alone—apart from breeding or sales volume—purebred stock has an earning power from a third to one-half greater than scrub stock. The average superiority of purebreds over scrubs for all classes of farm animals is about 49 percent.

Apple tree tent caterpillars are rarely bothersome in well kept commercial orchards because the arsenical sprays used in control of other pests kill these insects. If they appear in small, unpruned orchards or on other fruit or shade trees, prompt action will prevent defoliation. The use of a torch made of asbestos or rags bunched on a pole soaked in kerosene and held flaming under the tents in the higher branches is convenient and effective. It is not wise to use fire in the branches of larger limbs. Good results are reported from the use of rags saturated with kerosene to "wet down" the insects.

A successful method of destroying flies on cars and dogs is to

wash the animals thoroughly in a tub containing the proper proportion of a sulfonated castile soap preparation of which there are many samples on the market known as "stock dips." The animals should be washed with soap and warm water. Hesperian reports are established every 24 miles from Portland to California.

Drive a 614— with 4 speeds forward. A Graham-Paige 614—with four speeds forward, standard gear shift—is in our showrooms. Let us give you a ride. We want you to experience the unusual performance of this moderately priced car. Joseph B. Graham, Robert B. Graham, Ray A. Graham.



CRATER LAKE AUTOMOTIVE CO. 103 South Riverside—Phone 202. J. O. GREY— PAIGE DEALERS —H. D. GREY

GRAHAM-PAIGE

Now you can buy real style at low prices. Plymouth 4-Door Sedan, \$725. CHRYSLER PLYMOUTH.

CHRYSLER Plymouth \$670 AND UPWARDS. IN THE new Chrysler-built PLYMOUTH you get results that you simply won't believe possible in a car of such price, until you actually experience them for yourself. Never before, at such low prices, have you expected, much less realized, such speed, such power, and such smoothness—not a vestige of vibration throughout its entire speed range. Never before have you enjoyed such comfort. Full adult-size bodies. Fine upholstery and appointment you expect only in cars costing far more. Never before have you experienced such braking power. Internal expanding hydraulic 4-wheel brakes with moulded brake lining—no other car under a thousand dollars is so equipped—bring you to an instant stop with least pressure. Never before has a car of this price possessed such distinctiveness of body design. Swagger style. Smart new slender-profile radiator. Sleek, trim silhouette. In short, never before has there been such a car. Only the engineering genius and manufacturing skill of the Chrysler organization, through its principle of Standardized Quality, could produce such a low-priced car, embodying the quality and the value of the finest. We are eager to place a Plymouth at your disposal. Ride in it, drive it and we know you, too, will be ready to acclaim it Chrysler's crowning achievement in the low-cost-priced field.

Farm Bureau Co-operative Exchange. We make and sell all kinds of feeds and mashes. Our formulas are registered. We guarantee our products. WE SELL IN COMPETITION WITH ANYONE. Chicken Feeds 100 Lbs. Economy Mash \$2.80, Co-Op Special 2.60, O. A. C. 3.00, Growing Scratch 3.10, Pattering Mash 3.00, All-in-One 2.80, Wheat 2.50, Cracked Corn 2.50. Dairy Feeds 100 Lbs. Milk Make \$2.65, Calf Meal 3.15, Mill Run 2.10, Middlings 3.15, Rolled Oats 2.50, Ground Oats 2.50, Beet Pulp 2.75, Hog Fats 2.70. Reduction on Purchases of One Ton or More.