

CELEBRATION AT BANDON BEGINS NEXT TUESDAY

BANDON, Ore., July 1.—Bandon-by-the-Sea will celebrate the Fourth of July with a day of entertainment and recreation of varied features that provide an attraction for every taste.

Entertainment and amusement features include swimming all day and evening at Wee-wee Beach, the big heated water plunge; picnicking at the beach and in the municipal park where free coffee, cream and sugar for free dinners will be furnished at noon.

SOUTHERN CROSS USED GOODRICHES

After successfully completing one of the greatest achievements in aviation history, it is interesting to learn more of the important task of preparation for this remarkable flight and the functioning of the equipment chosen.

Utmost consideration is always given to tires. The take-off and the landing include many elements of risk, and the equipment is very carefully selected in order to minimize this danger.

A bulletin just received from the Goodrich factories, at Akron, Ohio, tells of the Lewis Super-Swivler station, local Goodrich Silvertown dealer, being on the spot played by him in the special trans-Pacific flight of the Southern Cross.

Early in the winter, when the Southern Cross made its first test flight, Commander C. Kingsford-Smith had the plane equipped with 4410 Goodrich Silvertowns. The plane has a 73-foot wing spread and the loaded weight is very close to 18,000 pounds.

After completing the 2,160 mile hop to Hawaii and landing at Wheeler Field, near Honolulu, a still greater feat awaited the Southern Cross. More gasoline was required for the 2,100 mile trip to the Fiji Islands and more weight was thereby given to the plane.

In leaving the Oakland airport, just outside of San Francisco, the Southern Cross, loaded down with the weight of four men and 1200 gallons of petrol, bumped along the ground for 4700 feet before taking the air. But the tires proved equal to this strain and the huge plane roared out over the Golden Gate at the start of the now famous flight.

After completing the 2,160 mile hop to Hawaii and landing at Wheeler Field, near Honolulu, a still greater feat awaited the Southern Cross. More gasoline was required for the 2,100 mile trip to the Fiji Islands and more weight was thereby given to the plane.

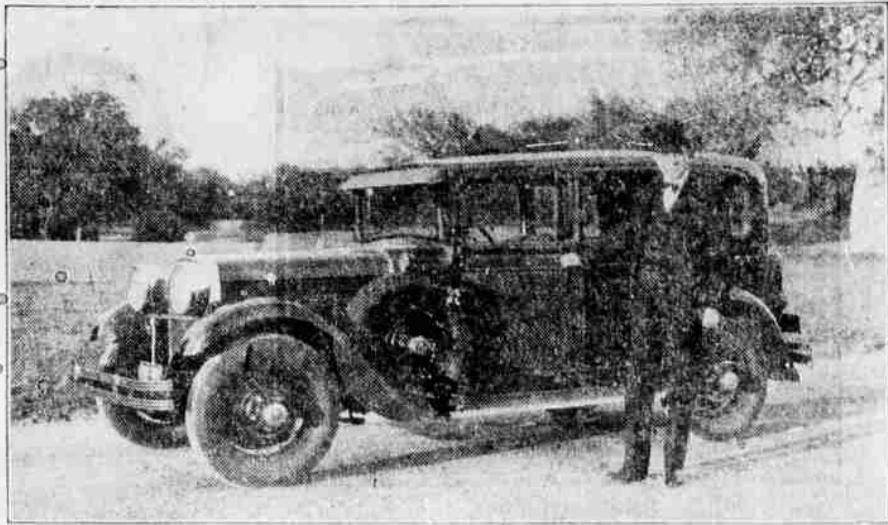
After hopping to Nacal Beach, the last leg of this heroic flight offered no serious obstacles to the plane's progress. Nacal Beach has a three-mile stretch of smooth, hard sand which Commander Kingsford-Smith designated as one of the best runways in the world.

According to Phil B. Low, it is significant that Goodrich Silvertowns took Colonel Lindbergh safely to Paris and then again came flying through on this great conquest of the Pacific. The choice of Silvertowns for the two most hazardous undertakings of the age in aviation is a marked indication of the popularity attained through the service given by this Goodrich tire.

Service Important Part of Car Sale

The automobile dealer who is most popular with motorists is usually the automobile dealer who is most popular with car buyers.

Dodge Senior Gets Congressional O. K.



ONE of the first buyers of the Dodge Brothers Senior sport sedan was Congressman Tom Connally, of Texas, who used the car in canvassing the Lone Star state in the interest of his candidacy for the Senate.

KEEPING YOUR CAR MODERN

By H. LEDYARD TOWLE, Director, Duco Color Advisory Service

Proper Care In Summer

No. III

WHEN the car behind toots the horn and roars by you, a good deal has happened besides the mere fact that another tourist is trying to get somewhere in a hurry and you have one less car to worry about on the road.

There is a peculiar thing about this film, particularly in regard to its action on the pyroxylin lacquer that provides the finish for nearly all modern cars. It is important and even necessary to get it off your car as soon as your run is over.

It is surprising in what good condition an automobile can be kept under ordinary circumstances by a mere wiping. The grease on the wheels should be washed off with some naphtha soap and the top and body can be washed from time to time with water and any good soap.

Ownership of a car. The world knows now that the dealer's responsibility is a vital factor in every sale and that the logical person to supply the essentials of operation and maintenance is the one who sells the car.

HONOR BIRTHDAY GOODYEAR TIRES

In bringing out the Goodyear Double Eagle tire, which officials of the Goodyear Tire & Rubber Company claim is the finest tire ever built, the Goodyear organization is honoring the 30th anniversary of the founding of the company in 1898.

The history of the Goodyear company," he said, "is one of the most unusual in American industry. Although the rubber industry was already 69 years old in 1898 when Goodyear was organized in Akron, the center of the industry, by 1915 the company had become the largest manufacturer of automobile tires in the world, and by 1924 had become the foremost company in the world in point of volume of goods sold and quantity of crude rubber consumed, which position it enjoys today.

Oldsmobiles Sent to Alaskan Ports

The automobile and modern machinery are active participants in another "gold rush" to Alaska. Together they are not only adding to the gold store of the world but also are opening up a new country untraversed by scenic richness and, despite general opinion, an

ideal summer playground. The demand for automobiles in Alaska is indicative of the progress of this most northern territory of the U. S.

First impressions of Alaska, still generally believed, were gained in the thirties when thousands of prospectors rushed over the Chilkoot Pass, many perishing in the rigors of winter and for lack of proper transportation facilities.

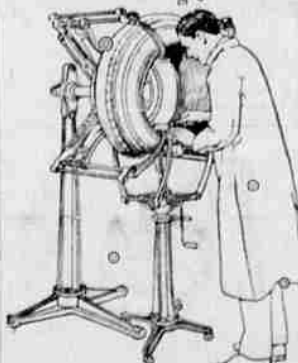
Recently modern machinery has been brought to Alaska and started re-working the old mines on an efficient basis, granting a rich harvest left by the early miners due to their crude methods.

It is also a good plan to look out where you are going while on the road. This of course applies to any part of your car. But a little care as to the road or the part of the road you use will save your finish mightily.

In fact, care, a temperate consideration of your car, will repay many fold in the end. This applies not only to the engine and to the tires but in particular to the finish. There is no reason why a good modern pyroxylin finish should not be practically permanent.

Part of the company's supply of crude rubber is grown on the company's own plantations on the island of Sumatra. Goodyear also operates a 40,000 acre cotton plantation in Arizona and its own cotton mills in Massachusetts, Connecticut and Georgia.

Dr. Jud Rickert, Optometrist, 222 E. Main



WE USE HAWKISON VULCANIZING SYSTEM All Work Guaranteed PHIPPS AUTO PARK HIGHWAY AT JACKSON

Roads to Romance with Jack and Ethyl

Being the original letters of a young wife on her honeymoon over the Pacific Coast to her girlfriend back home.

Dear Marion and Jim: This business of a honeymoon fully impresses me. You folks on the Pacific coast is certainly the only passage for some 800 miles of contrasts. Last week I got and then I branched out into we were up in the mountains at a whole multitude of meetings.

Then we saw the great trees in Sequoia and General Grant parks that were old when Christ was born. It's all just a step or two in your car and Jack and I were astonished how many people even back in Central California who own cars and yet never get around to see the sights right near at hand.

Advertisement for LEMOSS TEXACO GAS AND OILS THE TIRE MAN FEDERAL BALLOONS and HIGH PRESSURE CASINGS. Includes a large illustration of a man in a suit and a tire, and a detailed price list for various tire models like Blue Pennant and Clincher Defender.