

### BORAH INSISTS ON DRY PLANK AND MAY GET IT

KANSAS CITY, June 12.—(AP)—The tentative draft of the republican party platform as embodying the administration ideas on the questions of the day was completed today by Senator Soot of Utah, who is the chairman of the platform committee, and those who have been collaborating with him.

This draft will be presented to the committee after its formal appointment tomorrow by the convention at the opening session. Along with it there will be offered many separate planks including a half dozen drawn by Senator Borah of Idaho, chairman of the senate foreign relations committee.

While the Idahoan may get the vote of his delegation for the presidency, he stated today that his sole interest was in the platform which the party is to adopt and that he wanted the issues clearly set forth with strong pronouncements on prohibition and corruption in government and politics.

Senator Borah's corruption plank carries no names but it was understood the question of naming some of those who have figured in government and political turmoils during the recent past would be considered by the committee.

The prohibition plank drafted by Borah, and which specifically calls for rigid enforcement of the 18th amendment, was submitted to Senator Smoot several days ago and the understanding is that it was satisfactory to the resolution committee chairman.

The plank has been approved by four of the candidates for the presidential nomination and Senator Borah expects its approval by the committee.

His other planks deal with the outlawry of war and foreign affairs generally with disclosures in the federal trade commission investigation of the utilities industry and the equalization of the tariff between agriculture and industry.

It was conceded today that there was a possibility of several questions coming before the convention through the vehicles of minority reports.

Efforts to compose the views of the farm leaders on the agricultural plank still went forward today but with no immediate prospect of success; what has been denominated as the more "radical" of the leaders still insist that the equalization law be referred to specifically in the plank. This is strenuously opposed by other farm groups as well as by administration forces.

### PRESIDENT'S SECY. HAS NOTHING TO SAY ABOUT CHIEF

KANSAS CITY, June 12.—(AP)—Everett Sanders, secretary to President Coolidge, and possible bearer of word from the White House to the convention, arrived here today but was silent on the possibility of Coolidge making another statement about his availability as the nominee himself.

Sanders declined absolutely to discuss the president. He would not deny or confirm rumors that he had a message from Mr. Coolidge to the convention and there were no indications that he intended to participate in any of the pre-convention proceedings.

If the secretary has a message from the White House, he has made no arrangements for making it public. However, from his room in the Muehlbach hotel, where he and Mrs. Sanders are stopping, the secretary will be in a position to keep in touch during the day with the White House, should it be desired.

Mr. Sanders declared he was coming to the convention from force of habit, recalling he had long been in the custom of attending the party's national convales. He was for many years a member of the house from Indiana.

### FOREIGN TROOPS ARE ORDERED TO GET OUT OF CHINA

SHANGHAI, June 12.—(AP)—The Nanking government counsel, the Nanking government news agency announces, has drawn up a manifesto addressed to the powers having treaties with China, which states:

"Foreign troops must be withdrawn from China immediately.

"The presence of foreign troops is causing mutual suspicion. The practice of the powers in sending forces to whatever part of Chinese territory their nationals happen to reside will compel the nationalists to exclude foreigners from the interior of China."

The manifesto declares that the reconstruction phase of the revolution has arrived, but that it cannot be effectively carried out because of restrictions imposed on China by treaties. Therefore, the nationalists hope that the powers will agree to immediate treaty revision.

WASHINGTON, June 12.—(AP)—Assurances have been given the diplomatic corp at Peking that the nationalists will make some arrangement for the peaceful withdrawal of General Pao Yu Lin's Mukden troops, numbering about 1200 men; the state department was informed today.

### BIG OFFENSIVE STARTS ON GRAIN RATES TO COAST

SEATTLE, June 12.—(AP)—A determined and three-fold offensive upon the existing grain rate structure of northwestern railroads was to begin in real earnest today, when the inter-state commerce commission's grain rate hearing resumed for the week—the last week, it was predicted, of the Seattle hearing.

The avenues of attack upon the present tariff were indicated by three widely separated groups of interests.

Idaho Empire farmers began presentation of their case by asking for the "lowest possible rates" on grain from eastern Washington and northern Idaho to the Pacific coast.

Minnesota milling interests who desire eastbound rates from Montana comparable with the west-bound export rates.

The railroads themselves, who indicated they would in all probability line up with the Minnesota millers to do away with the special westbound export rates, rather than grant lower east-bound rates.

The strategy of the Minnesota interests in presenting a choice

between low eastbound rates from Montana or the preservation of the present westbound rates in the belief of Portland and Seattle attorneys, was intended to win the railroads' support for Minnesota in the fight between Pacific coast and Minnesota mills for 130,000,000 bushels of Montana wheat.

### PERSHING ARRIVES, MUM ON REPORTS

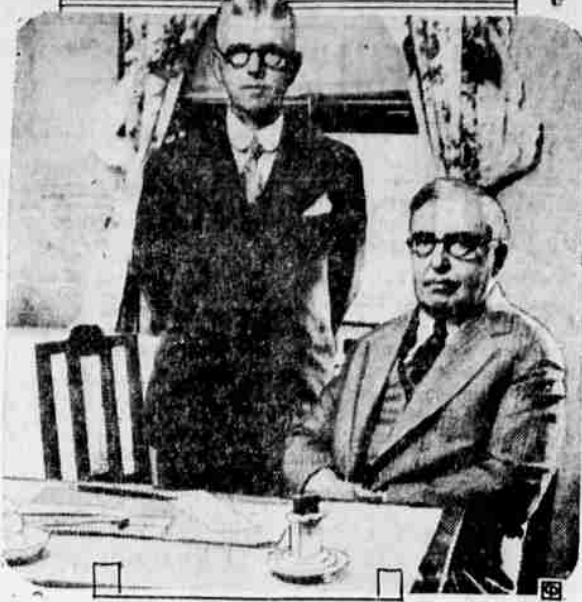
NEW YORK, June 12.—(AP)—General John J. Pershing, who arrived from France today, refused to discuss a report he was a candidate for the presidential nomination, except to say it was "news" to him.

He inquired as to the origin of the report and was referred to recent messages from Paris saying that he had departed in great haste for America in order to be near the Kansas City convention. General Pershing replied that he had booked passage more than a month ago but a late appointment had prevented him from going aboard until a few moments before sailing time.

He inquired as to the origin of the report and was referred to recent messages from Paris saying that he had departed in great haste for America in order to be near the Kansas City convention. General Pershing replied that he had booked passage more than a month ago but a late appointment had prevented him from going aboard until a few moments before sailing time.

**Killed in Greek Riots**  
ATHENS, Greece, June 12.—(AP)—Serious rioting in which one person was killed and several wounded occurred today at the Kavala headquarters of the American Tobacco

### GETTING READY FOR G. O. P. MEET



William M. Butler, chairman of the Republican national committee, takes a minute from attending to the many last-minute convention details to pose for his picture at his desk in Kansas City, Mo. David W. Mulvane, Republican national committeeman from Kansas, is standing, above.

company where workers are on an organized and the casualties reported. The strikers stoned the general. The government took measures to restore order.

### SENATOR BORAH OPPOSES EFFORT TO DRAFT CAL.

(By Milo M. Thompson, Associated Press Staff Writer)  
KANSAS CITY, June 12.—(AP)—For the republican national convention to force the nomination of President Coolidge "would be dangerous," Senator William E. Borah of Idaho, today told his state delegation at his first conference with them.

"We should then be in a position of selecting a candidate, who would withdraw, leaving the party to make a campaign with a second choice," Borah said.

"As for President Coolidge I am confident he will not run and am inclined to believe he will ask that no further votes be cast for him if any are cast on the first ballot.

"As I see it, there are only two men in this race. One is probably in it without his consent—President Coolidge. The other is Secretary Hoover.

Borah told the delegation that if there was anything strategic advantageous in its voting for him he was willing that it should do so. But he added that he hoped his state would do nothing to impair any advantage it might have by taking a leading part in

the selection of the presidential nominee.

The senator let it be known that he was willing to have the Idaho votes go to Secretary Hoover on an early ballot, even on the first, if it should appear desirable to insure Idaho a place in Hoover councils by this method. No definite vote was taken by the delegation on this question and further conferences will be held.

Another Incendary Fire.  
PORTLAND, Ore., June 12.—(AP)—Fire in a vacant flat building on Halliday avenue today was declared by fire marshals to have been of incendiary origin. For a time the fire threatened adjoining buildings. Several fire houses were called. Fire marshals believe that a fire bug is at work in the city.

Classified advertising gets results.

FOR YOUR WINTER

# FIRE

Green Pine Slab Wood  
12-inch or 16-inch

**\$2.75** Per Load  
2 Loads \$5.00

MEDFORD FUEL CO.  
1118 North Central

Reichstein Tel. 631 Deuel

## ONLY A FEW DAYS TO GET TIRE BARGAINS

Every Southern Oregon Motorist Must Take Advantage of This Opportunity to Get a

# 25% REDUCTION

ON FRESH, NEW, GUARANTEED

# GOODYEAR All Weather TIRES

Look at These Prices—Remember! They're GOODYEARS

Goodyear All-Weather Cords				Goodyear All-Weather Balloons			
Size—	Reg. Price	Sale Price	You Save	Size—	Reg. Price	Sale Price	You Save
30x3 1/4 Clin. Oversize Cord	\$11.10	\$ 8.30	\$ 2.80	29x4.40	\$12.20	\$ 9.15	\$3.05
30x3 1/2 SS. Cord	13.85	10.40	3.45	29x4.75	15.35	11.50	3.85
31x4 SS. Cord	17.35	13.00	4.35	30x4.75	15.95	11.95	4.00
32x4 SS. Cord	18.40	13.80	4.60	30x5.00	17.35	13.00	4.35
33x4 SS. Cord	19.35	14.50	4.85	31x5.00	18.05	13.55	4.50
30x5 SS. Cord	30.20	22.65	7.55	32x5.00	19.95	14.95	5.00
33x5 SS. Cord	34.00	25.50	8.50	30x5.25	20.20	15.15	5.05
32x6 SS. Cord	51.95	37.00	14.95	31x5.25	20.85	15.65	5.20
33x4 SS. Cord	19.35	14.50	4.85	31x6.00	23.65	17.75	5.90
32x4 1/2 SS. Cord	25.00	18.75	6.25	32x6.00	24.40	18.30	6.10
33x4 1/2 SS. Cord	26.00	19.50	6.50	33x6.00	25.25	18.90	6.35
34x4 1/2 SS. Cord	26.95	20.20	6.75	32x6.20	29.05	21.80	7.25
				33x6.20	29.75	22.30	7.45
				33x6.75 Heavy Duty	37.65	28.25	9.40

THIS SALE WON'T LAST LONG  
HUNDREDS ARE BUYING. NEW TIRES ARE ARRIVING DAILY

# MEDFORD SERVICE STATION

Pacific Highway and Main "YOUR TIRE SHOP" Telephone 14

LOW PRICED  
PATHFINDER  
TIRES ARE ALSO  
REDUCED IN PRICE!