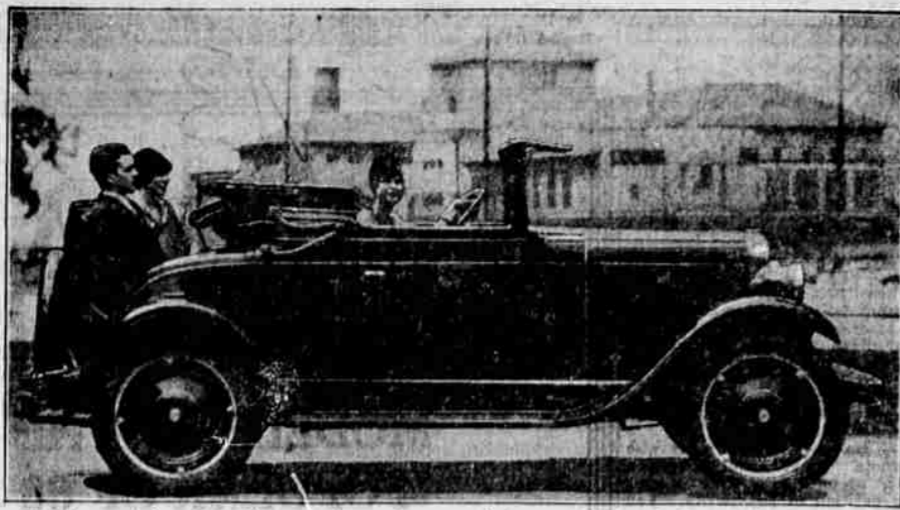


### DIVIDED FRONT SEAT AVAILABLE IN VICTORY SIX

Production of a limited quantity of Victory six sedans, both deluxe and standard models, with divided adjustable front seats has been announced by Dodge Brothers, Inc. When seats are adjusted together, they give the appearance of a solid undivided front seat.

Adjustments can be quickly and easily made by means of a locking handle to increase or diminish the leg room and steering wheel clearance in the front compartment. No tools are required, and with the locking handle raised it is possible to lift either seat from the car. Prices of the deluxe Victory sedan with adjustable front seat, and the standard Victory sedan, are far below the expectations of the lovers of high class cars.

### New Chevrolet Convertible Sport Cabriolet



This latest offering of the Chevrolet Motor Company, listing at \$695 f. o. b. Flint, Mich., brings to the low priced field a model of unusual smartness and distinction. The collapsible top allows full vision ahead from the rumble seat. Body is by Fisher.



Still another modern fairy story: Once there was a motor car thief who replenished the gasoline tank after using the car.

All goes to the Filling Station Here today and gone tomorrow 'Are the fruits of all our toil; For the wheels of progress surely Take a lot of gas and oil.

All motorists want cheaper autos but aviators don't care to see aeroplanes drop.

**Parking News**  
A chicken in the coupe is worth two on the curb.

Dumb Dora has been searching the seed catalogue for Ford seeds. "I keep hearing so much about Ford plants and I want a car so badly, I thought I would raise some."

When Noah sailed the waters blue He had his troubles same as you. For forty days he drove the ark Before he found a place to park.

Watson had bought a second-hand car and was repairing it. "You wouldn't think it was a second-hand bus, would you?" "Good heavens, no! I really thought you had made it yourself."

The road hog may be willing to give half the road, but he usually takes his half in the middle.

The wild flowers will never be safe until the vandals are ashamed to decorate their cars with them and parade around town.

**Change of Color**  
"I thought red was your favorite color," declared the Medford wife after her husband had roared her for wearing a dress of that color. "It was," he retorted, "until they put up those darn traffic lights."

Dorothy—The garageman sent that second-hand car you ordered and I tried it out.  
William—How many people does it carry comfortably?  
Dorothy—None!

**Autolist**—Where do you get auto parts around here?  
Native—"At the railroad crossing."

A wife of today who steers the auto from the back seat is the same girl who when she was being courted used to grab the lines.

Traffic cop—Don't you know you can't turn around in the middle of the block?  
Mrs. H.—Oh, I think I can make it.

The young man had just driven home from college at the close of the term.  
"Did you pass everything?" anxiously asked his mother.  
"Everything but two Buicks and a Hudson—darned if they mustn't have had airplane motors in 'em!"

**First On the New One**  
Mary had a new style Ford. It bumped a bear-eyed bloke. And when they scraped him up he roared.  
"That Liz is sure no joke."

Mary had a little Ford. With shell like Arab sand; 'Twould run at 65 per hour, Or eat out of your hand.

There is no use to explain the budget system to a man who pays \$3 for getting his car washed while his wife is doing the family wash at home.

Automobile dealers are advertising "safe cars." The cars are all right and always have been. What we need is safer drivers.

That our sun is like a big fiery heart that beats at a regular rate, becoming alternately larger and smaller, is the interesting discovery of scientists at the astronomical observatory in Home, Mass. Popular Mechanics Magazine. These "beats" occur over periods of eleven years and can be measured only by the most accurate instruments and after painstaking checking. In scientific terms, the discovery means that our sun is pulsating star. Its diameter becomes larger and then decreases. The variation is of further interest for the reason that it has a direct relation to the occurrence of spots on the surface of the sun. Just before the period of the greatest number of spots, the diameter is greatest, and smallest when spots are few.

### INTERESTING DATA ABOUT AVIATION

Some idea of the remarkable growth of aviation since the epochal flight of the Wright brothers on December 17, 1903, may be obtained from the following brief outline of the position of the industry today:

A minimum of 3264 planes are operating in the U. S. There are a total of 3584 pilots. A total of 2011 new commercial airplanes and 365 military and naval planes were built in the United States last year, an increase of 95.4 percent over 1926.

Largest production by one company was 454 planes in 1927. Commercial airlines, 24; commercial air routes 12,627 miles; mail routes 7,763 miles; express routes 7,245 miles; passenger routes 7,265 miles; improved airways 7,099 miles.

By June of this year, air mail planes of the United States will be flying 25,000 miles daily—a distance equal to the circumference of the earth at the equator. With 80 station stops these planes will be serving trade areas that embrace \$2,300,000 people.

There are on record more than four thousand fields in the United States on which landings can be made—owned by states, municipalities, corporations, clubs, commissions and individuals.

Already the United States department of commerce has established an airway division with beacon lights marking the trunk lines from coast to coast and north to south, with daily mail travelling from coast to coast in 20 hours.

Rules of interstate commerce have been applied to the navigation of the air and all dependent pilots and their planes are examined and licensed by the government.

All mail poundage is showing gradual increase, figures for January 1927 being 79,259 against 130,115 in June 1927.

The weight of mail carried on airways between New York and San Francisco with some duplication, during 1927, was 750,000 pounds. The value of bank checks transmitted was approximately \$7,200,000,000. Mail and express included publications, photographs, jewelry, moving picture films, samples.

These figures are for mail and express only, exclusive of freight; one line alone, operating between Detroit and Cleveland and Cleveland and Detroit and Chicago transported in 1926, a total of 1,720,000 pounds of freight.

The planes of one American air-express company fly farther in a single day than all the combined lights of the Lufthansa lines in Germany and nearly twice as far as the combined flights of the Imperial Airways of England.

Casualties in scheduled airway flying are already comparatively rare. On our national airways under the supervision of the army 1,200,000 miles have been flown with only one serious accident.

**Tricks in Making Car Adjustments**

"Although it might cost me a little business, I wouldn't mind playing professor to some of my customers who want to learn a few of the tricks in making adjustments on their cars if I could get across to them that heat is everything in an automobile," says an expert mechanic. "I wish some one would tell me how I could make 'em understand this point. Maybe I'm a pretty poor professor, for when I have told 'em for the tenth time that it is the heat of the expanding gas that drives the piston down, they seem to go on thinking that it's the noise of the explosion or something like that."

"That chap that just drove out is one of my students. He adjusted his valves last night and came in this morning to have me readjust them. He might have done a good job himself if he hadn't forgot the first principle that the engine has to be hot before a good adjustment of valves or anything else can be made. He's only one of a dozen that have made the same mistake.

"Adjustments, I don't care what they are, are made for normal conditions. The normal condition of an engine is hot. When an engine is hot, its various units expand. When it is cold, they contract. It's clear then, or should be, that adjustments made when the engine is cold will take up clearances needed when it begins to warm up.

### POETRY OF MOTION IS LIVING AGAIN

Old timers among true lovers of horseteash will remember "Poetry of Motion" with a thrill of unalloyed pleasure. It was nearly two-score years ago that this great champion among five-gaited saddle horses stirred the hearts of applauding thousands of fashionable people as she promaded on proud parade, prancing around the tanbark rings of the greatest horse shows in the land.

And now, in this newer automotive age, owners of the modern steel steed are breaking out into poetry about their four-wheeled mounts.

Here is a real springtime tribute to a motor car, just received by Walter P. Chrysler from Byron J. King, of Pittsburg, who says: "I have been driving one of your '72' sedans. It has seemed to me from the very first time that I took the wheel in my hand that Chrysler cars possess a distinct personality, a personality that changes with the character of the driver, with the season of the year, with the hour of the day.

"The little verse below expresses my regard and appreciation for the Chrysler motor car:

"SILVER WINGS"  
Two gleaming wings on a silver crown,  
A blur of blue on the broad highway;  
A whispering song for the crest of the hill  
And a velvet pause where the valleys lay.

"Two proud little wings on a hazy crest,  
Romance at the side of the golden dawn;  
A heart that speaks to the pulse of youth  
With its eager murmur—'on and on!'"

"Oh! staunch little wings on your leave we say,  
Ah! fleeting shadow that skirts the road—  
With your dauntless pinions soaring far,  
Chrysler, you're more than a motor car."

The last three democratic presidents of the United States were Wilson, Cleveland and Buchanan.

**Turkey-Chicken Cross**  
WASHINGTON. (AP)—Answering inquiries concerning the so-called "turken," the department of agriculture declares it is altogether improbable the fowl is a cross between the chicken and the turkey.

Crosses have been obtained between the chicken and the pheasant, the department says, but their progeny always have been sterile. Judging from the naked neck of the "turken," authorities say it is extremely likely the fowl has the blood of the Transylvanian naked neck breed of chickens, which originated in West India and always has retained the distinct characteristic.

**Round the World Cruise**

Go everywhere - see everything. Untroubled, care-free and foot free - forgetting the "mechanics" of travel. That is the ideal cruise spirit, fulfilled to the extreme by booking with Canadian Pacific. Experienced travellers will tell you!

Round the World Cruise sails from New York City this year on December 1. Includes 5 continents, 21 countries, 26 ports, 136 days ship and ashore following the "wonderbelt of the world." On the Empress of Australia, Dream Ship of Cruises. Get literature and book early!

**CHAMPION Spark Plugs Dependable for Every Engine**

Champion is the better spark plug because it has an exclusive sili-manite insulator specially treated to withstand the much higher temperatures of the modern high-compression engine. Also a new patented solid copper gasket-seal that remains absolutely gas-tight under high compression. Special analysis electrodes which assure a fixed spark-gap under all driving conditions.

**Canadian Pacific**  
Wholesale and Retail Distributors

W. H. Deacon - Gen. Agent - Pass. Dept. 55 Third St. Portland Multnomah Hotel Bldg. Official Representatives for the North Am. Div. of the Indian State Railways

### OILING HIGHWAYS IN FULL FORCE

Spring is here, and as the roads dry the highway department begins coating them with oil as a dust preventative. This is resulting in a great many complaints due to the fact that oil on cars is both difficult and expensive to remove, and the motorist who travels over an oiled road finds it almost impossible to prevent oil from being thrown or splashed on his car.

The state highway department has co-operated with the Oregon State Motor association in attempting to arrive at some solution for the oil nuisance, and the following orders have been given by the highway department to the various oiling crews responsible for the work, with the idea of making oiling operations as safe and convenient as possible.

"All operations, whether in oiling or bituminous macadam work, will proceed over one-half of the width of roadway at a time. Where ever possible detours will be provided and maintained. Under these circumstances the oil will be placed on one-half of the roadway at a time so as to permit local people to use the sections without becoming splashed with oil. When detours are provided for all but local traffic, one-way traffic will not be maintained. Flagmen will warn the occasional motorist to be careful in passing. Furthermore, there will be other sections carrying light traffic where there are no detours available, in which the shoulders are of sufficient width to permit two-way traffic after one-half of the roadway has been oiled. Flagmen will stop each one and advise him of the necessity of using care in passing. On heavy traveled roads, whether there is room for two-way traffic after one strip has been oiled or not, one-way traffic will be maintained so as to avoid any possible accident. In all cases the distance of one-way traffic will be kept as short as possible. Before the first oiled section is opened to traffic and the oiling of the second half begins, sufficient screenings will be placed on any wet oil so as to prevent splashing."

**Farm Pointers**

When using one of the coal-tar creosote preparations in dipping livestock, only soft water should be used to dilute the mixture. When hard water is used a separation of the ingredients often occurs and the first animals to pass through the dip are likely to re-

ceive a dangerously large quantity of the chemicals.

Medicated nest eggs will not control chicken lice. It is better to give the hen three pinches of

sodium flouride—one on the head and neck, one on the back and one below the vent. For small chicks use two very small pinches.

It is not always necessary to produce infertile eggs to insure the best market quality. Fertile eggs may be handled advantageously if they are kept in a cool place and marketed often.

# Chrysler '62'

## NEW LOWER PRICES

# \$1065

### AND UPWARDS

### ONLY CHRYSLER ENGINEERING CAN GIVE YOU SUCH GREAT FEATURES

NO OTHER car, in its particular price range of \$1065 to \$1235, comes within leagues of what the Great "62" offers in performance, in quality, in style, and in value.

For no other enjoys the benefits of the unique intimate association with the production of such fine cars as the Illustrious "72" and Imperial "80."

As a result, Chrysler "62" is the only car to offer you the combination of these features at such low prices—rubber shock insulators—instead of

### CHRYSLER "62" NEW PRICES

- Business Coupe - \$1065
- Roadster (with rumble seat) - 1075
- Touring - 1095
- 2-door Sedan - 1095
- Coupe (with rumble seat) - 1145
- 4-door Sedan - 1175
- Landau Sedan - 1235

All prices f. o. b. Detroit, subject to current Federal excise tax. Chrysler dealers are in a position to extend the convenience of time payments.

metal shackles; self-equalizing hydraulic 4-wheel brakes; 7-bearing crankshaft with interchangeable shimless bearings; saddle spring-seat cushions; balanced front wheels for utmost safety in driving at higher speeds; etc., etc.

Examine the Great "62" with utmost care. Ride in it. Drive it. Only in this way can you learn just how far superior it is—not only to cars of equal price, but to cars costing many hundreds of dollars more.

### FITCH MOTOR CO.

128 South Riverside Phone 762

**SEVENTEEN** years ago Fisher pre-visualized the closed car as the ultimate vehicle of popular use. Guided by that vision, Fisher—through year after year of improved design and engineering—finally achieved the strong, safe, comfortable and compact body of today. How fully and how practically Fisher recognizes the responsibility of its unquestioned leadership is at once apparent in the surpassing comfort, value and beauty of the cars equipped with Body by Fisher.