



The Promised New Bargain Basement Cash Store Opens Saturday, October 10th, With Super-Value Offerings in a Seven-Day

Bargain Basement Sale

The stocks selected are kindred lines to those carried on our Main Floor, comprising Manufacturers' Close Outs, Sample Lines, Job Lots, Mill Runs, Special Purchases and Broken Lines from our Regular Stock. These and hundreds of other items are featured in this seven day selling event at "OUT OF THE ORDINARY" LOW PRICES!

Coats New Fall Styles Dresses Specially Purchased

New Fall Coats

New Materials—Some Fur Collars

\$11.50

Big Showing of Better Coats

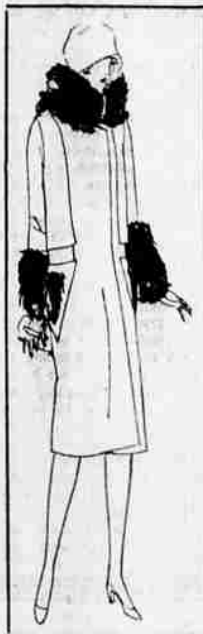
\$14.50, \$16.50, \$18.50 to \$19.50

Dresses \$5.95
Special Purchase of 75 beautiful new Dresses in Serges, Flannels and Silks in checks, plaids, stripes, and plain patterns. These are regular \$10.00 to \$12.50 values and very special in this sale at two low prices—**\$5.95—\$6.95**

Apron Dresses \$2.25
Materials of good Gingham and Black Sateen, regular \$3.50 values at **\$2.25**

Kimonas \$1.98
Creme and Flannelette Kimonas. Sample lines slightly soiled, values to \$3.50. Special **\$1.98**

Aprons, 2 for \$1.00
Just 100 in this lot—and real values at **2 for \$1.00**



Wool Coatings, Suitings, Velours, Flannels, Ginghams, Percales at Unusual Prices

\$4.98 Coatings \$1.98

54-in. wide Coatings in desirable lengths and good patterns, regular \$4.98 sellers at **\$1.98 yd.**

Serges and Flannels 98c

A good selection of new and practical materials, much higher priced materials, now priced at **98c yd.**

Ginghams 17c

32-in. Ginghams, Fancy Patterns **17c yd.**

Percales 17c

25c Percales light and dark colors **17c yd.**

Outing Flannel 19c-21c

36-in. heavy Outing, solids and fancies **21c yd.**
27-in. Heavy Outing Flannel, **19c yd.**

Cretonnes 49c

50c Cretonnes, new patterns **39c yd.**

Cheviot Cloth 19c

36-in. Cheviot cloth, reg. 25c values, **19c**

Romper Cloth 23c

36-in. Romper cloth, reg. 29c quality **23c**

SHOES Women's, Growing Girls', Children's, Infants', Boys', and Men's, Upwards of 3,000 Pairs From Which to Make Your Selections!

Women's Shoes at Low Prices

Women's Shoes are grouped to sell at seven low prices—**89c 98c \$1.48 \$1.98 \$2.48 \$2.98 \$3.98**

At **89c** Pair
Regular \$1.19 Felt Slippers, all sizes

• At **\$1.48** Pair
Quilted Satins, Felts and others of Regular \$2.25 Quality



At **\$2.98** Pair
Broken lines of our Regular \$5.00 grades.

At **\$1.98** Pair
High Shoes, Slippers, cut out patterns, Values to \$4.00

At **\$2.48**
Comforts, Oxfords, and others, Regular \$4.00 Values

At **98c** Pair
Broken and Sample lines—Odds and Ends

At **\$3.98** Pair
Broken line of our Regular \$7.50 and \$8.50 Dress Slippers



Men's Shoes

Extra Values at Low Prices—**\$2.95 and \$3.95**

At **\$2.95** Pair
Regular \$3.50 to \$4.50 all leather Work Shoes just 52 pairs to close out at this price

At **\$3.95** Pair
Paracord Sole—Pac toe in dark brown, medium weight work Shoes, also Semi Dress Shoes in this lot, only 41 pairs to close out at this price

Children's and Infant's Shoes

All Children's Shoes in Bargain Basement have been grouped to sell at five low prices—**48c 98c \$1.48 \$1.98 \$2.19**

At **48c** Pair
Infants' Soft Sole Shoes, Values to \$1.00

At **98c** Pair
Children's First Step Shoes and Slippers, Felt Slippers, and many others

At **\$1.48** Pair
Sizes 5 to 8 in Brown and Black Shoes and Slippers

At **\$1.98** Pair
Growing girls and similar lines to above, only in sizes 8 1/2 to 12

At **\$2.19** Pair
Sizes 12 1/2 to 2 in this lot and values to \$4.00



Miscellaneous Items

- 36-in. Comforter Cretonnes **25c yd.**
- Curtain Scrim short lengths **10c yd.**
- 50c Marquessette Curtain Net **29c yd.**
- 72x90 White Quilts values to \$5.00 **\$1.98**
- 32-in. Kalburnie Ginghams **23c yd.**
- Corsets, regular \$7.50 values **\$1.00**
- Brassieres, values to 75c **29c**
- 64x76 Heavy Double Blankets **\$1.95**
- Men's Heavy Ribbed Union Suits **\$1.25**
- Men's Flannel Shirts and Sweaters **98c**
- Children's Taped Union Suits **98c**
- Women's Silk Hosiery **\$1.00**
- Women's Lisle Hosiery **24c**
- \$1.75 Crepe de Chine New colors **98c yd.**

Towels at 10c and 15c

100 Extra Large Towels, fancy and plain—gun of the mill—while lot lasts only **15c** each. Same Quality in small sizes **10c** each.

Sale Remnants One-Half Price

Thousands of yards of short length goods—all perfect and very desirable lengths. Two tables heaped high with these remnants of Wool Coatings, Suitings, Silks, Ginghams, Cretonnes, and many others go in this great sale at exactly 1/2 Regular Price.

Sale Underwear One-Half Price

Women's Union Suits 1/2 Price

In Fall and Winter Weights. Several Musing Wear garments in this lot at

ONE HALF PRICE

Women's Vests, Pants 1/2 Price.

Silk and Wool and Heavy Cotton Garments in this lot

Women's Sweaters \$1.49

All wool sweaters in Coat and Slipon Styles. Plain and Novelty knits. Values to \$5.00 at **Only \$1.49**

Child's Vests, Pants 1/2 Price.

Close out lot of high price Sample Garments at exactly **ONE HALF PRICE**. All Fall and Winter Weights

Men's Shirts, Drawers 1/2 Price.

One lot heavy Ribbed Cotton Garments slightly soiled at **ONE HALF PRICE**

Women's Bloomers \$1.00 Each

Fancy Crepe and Linette materials used in these Bloomers. All sizes. Regular \$1.50 to \$2.00 values at \$1.00 each. Children's Bloomers at **48c** each.

Miscellaneous Items

- 70x80 Heavy Wool Nap Blankets **\$3.85**
- 81x90 Hemmed Sheets, with seams **98c**
- 42x36 Pillow Cases **25c**
- Regular \$1.50 Chemise **98c**
- 70x80 Heavy Cotton Blankets **\$2.49**
- Rayon Hosiery, new colors **48c** pair
- Twill Toweling **15c yd.**
- Good Quality Scrim **15c yd.**
- 36-in. Pillow Tubing **29c yd.**
- 8-4 Bleached Sheeting **48c yd.**

Boys' Suits \$4.95 and \$6.95

Two Lots at Low Prices

Values to \$10.00 for **\$4.95** Values to \$15.00 for **\$6.95**

M. M. DEPT. STORE

MEDFORD BUILDING

SIXTH AND CENTRAL STREETS

SALE STARTS SAT., OCT. 10 AND CLOSSES SAT., OCT. 17

Everything Strictly Cash