

Prize List Offered by Local Merchants for Cooked Food Exhibits

The prizes to be offered at the County Fair for cooked food and the names of firms donating prizes on Thursday, are as follows:

Class 92. White bread, first, 49 pounds flour from Fichers' Blend company; second, 1 pound coffee donate dby Hardy Brothers, Ashland.

Whole Wheat Bread, first, sack of coal, Hansen Coal Co., Medford; second, 10 pounds whole wheat Cherro flour, Weaver's store, Central Point.

Prune Bread, first, cups and saucers, Jap Art Store, Medford; second, 1 pound coffee, Hardy Brothers, Ashland.

Rye Bread, first, Crown Mills flour, Rogue River Milling company, Medford; second, 1 pound coffee, Enders' Blend, Hardy Brothers, Ashland.

Oatmeal, first, 1 package oatflakes, 1 package pancake flour, 1 package wheatole, White Cabin Grocery, Ashland; second, 10 pounds Cherro oatmeal, Frasier & Son, Ashland.

Parker House Rolls, first, vase, O. H. Johnson, Ashland; second, Crown Mills flour, Rogue River Valley Milling company, Medford.

Graham, first, 3 pounds Enders' Blend coffee, Hardy Brothers, Ashland; second, 10 pounds Cherro graham flour, Weaver's store, Central Point.

Class 97. Cakes, sponge, first, La France silk stockings, donated by Mann's Department store, Medford; second, lamp shade, Jordan Electric company, Ashland.

Angel Food, first, 49 pounds Cherro flour, Weaver's store, Central Point; second, lamp shade, Jordan Electric company, Ashland.

White loaf, first, credit slip for \$1.50, Pantorium Dye Co., Medford; second, lard, Model Meat Market, Medford.

Dark Loaf, first credit of \$1.50, Pantorium Dye Co., Medford; second, 1 pound Enders' Blend coffee, Hardy Brothers, Ashland.

Chocolate Layer, first, credit for \$1.50 with City Cleaning and Dyeing Co., Medford; second, 1 knife, Thomas Simpson Hardware company, Ashland.

White Layer, first, 3 pounds butter, Snyder Dairy & Produce company, Medford; second, 1 pound cake baking powder, Service Store, Inc., Medford.

Sunshine, first, credit for \$2 at City Cleaning and Dyeing company, Medford; second, two cans soup, Rogue River Canning company, Medford.

Spice, first, sack flour, Messner's Grocery, Medford; second, box spices, Heath's Drug store, Medford.

Cup and Loaf, first Fearless Mixer, Medford Hardware and Sporting Goods company, Medford; second, 1 pound Enders' Blend coffee, Hardy Brothers, Ashland.

Gingerbread, first, 2 packages Sperry Cake flour, Sperry Flour company, Medford; second, 1 knife, Thomas Simpson Hardware Co., Ashland.

Class 98. Cookies. White cookies, first, 1 package Sperry Cake flour, Sperry Mills, Medford; second, 1 bottle vanilla, Acme Flavoring company, Portland.

Ginger Cookies, first, 1 package Sperry Cake flour, Sperry Mills, Medford; second, 1 bottle vanilla, Acme Flavoring company, Portland.

Rock Cookies, first, 1 package Sperry Cake flour, Sperry Mills, Medford; second, 1 bottle vanilla, Acme Flavoring company, Portland.

Baking Powder biscuits, first, 1 package Sperry Cake flour, Sperry Mills, Medford; second, 1 bottle vanilla, Acme Flavoring company, Portland.

Raised Doughnuts, first, 1 package Sperry Cake flour, Sperry Mills, Medford; second, 1 bottle vanilla, Acme Flavoring company, Portland.

Class 99. Candy. First, bath powder, Lithia Springs Pharmacy, Ashland; second, butter dish, Lampouts, Medford.

Class 99A. Pie, apple pie, or one crust and meringue, first, pastry set, Medford Furniture & Hardware Co., Medford.

Apple Pie, two crusts, first, 2 pounds Enders' Blend, Hardy Brothers, Ashland.

Class 102. Angel Cake, first, machine, Singer Sewing Machine company, Medford; second, 10 pounds pastry flour, Cherro brand, Weaver's store, Central Point.

Sponge Cake, first, 3 dessert spoons, Reddy & Co., Medford; second, rubber apron, Medford Pharmacy.

White Bread, first, sack Cherro

flour, Frasier & Son, Ashland; second, Crown Mills flour, Rogue River Milling company, Medford.

Rolls, first, 1 pair hose, The Bootery, Medford; second, 10 pounds flour, Cherro brand, Davidson's Store, Table Rock.

Devil's Cake, first, aluminum dish, Weeks & Orr, Medford; second, 2 bottles vanilla, Acme Flavoring company, Portland.

Pie, two crusts, first, silver pie knife, John Johnson, Medford; second, 2 bottles vanilla Acme Flavoring Co., Portland.

Pie, one crust, first, Plex pie plate, Young's Hardware, Medford; second, 1 bottle vanilla, Acme Flavoring company, Portland.

Candy, first, barrett, The Shields company, Medford; second, 1 pound Enders' Blend coffee, Hardy Brothers, Ashland.

Prune Bread, first flash light, Ashland Electric company, Ashland; second, 1 pound Enders' Blend coffee, Hardy Brothers, Ashland.

LOCAL DRY FINES \$542 FOR MONTH

The prohibition fines collected for the month of August, according to the records of the treasurer's office, totaled \$542. Half of this sum—\$271, has been turned over to the state prohibition fund in accordance with a law passed by the last session of the legislature, effective in June. Before only 25 per cent of the monthly fines collected were turned over to the state fund.

Iron Horse Coming Craterian Tomorrow

An outstanding event of Jackson county fair week at the theaters is the local debut of the spectacular picture, "The Iron Horse," at Hunt's Craterian theater tomorrow matinee for a three days' engagement. The opening here follows a sensational 16 weeks' engagement of this production at Sid Grauman's, six weeks in Portland and San Francisco.

The story deals with the winning of the west and the tremendous task of laying the first transcontinental railroad. How the two rival crews, one starting from the east and the other starting from the west, strove to outdo each other, and their intense rivalry are brought out in the production. Fighting the Indians, combating every peril that existed along with the terrible hardships, is something that every true American should have knowledge of.

The romantic story of the express business, how it mellowed the railroad, expanding commerce and extending civilization into the west is told in a vivid and interesting manner.

The Screen By Ye Press Agent.

Good Screen Drama, Rialto. "Up the Ladder," is the feature starring Virginia Valli, at the Rialto. As a woman who suffers self denial in order that she may boast her lover, later her husband, "Up the Ladder," to fame and power in the commercial world, Virginia Valli gives one of her best performances. After rising to the zenith of power, the husband, as played by Forrest Stanley, forgets the little woman to whom he owes all his success, for the artificial charms of "the woman in the case," ably and delicately portrayed by Margaret Livingston.

The injection into the picture of the televisionphone, an instrument which allows one to actually visualize the person to whom one is speaking over the telephone, proved a sensation.

MINING NEWS OF SOUTHWESTERN OREGON

Edited by Southwestern Oregon Mining Bureau.

GRANTS PASS, Sept. 12.—Work continues on the Gold Wonder mine on Coyote creek in the Greenback district, Josephine county, owned by J. T. Bratton of Portland and Roscoe Bratton, former owner of the Peerless Clothing company, this city. About a month ago the well developed vein 57 feet wide with a 4-inch pay streak that ran 20 cents a pound, or about \$400 a ton in gold. After this discovery work was pushed on a new tunnel 475 feet distant and the vein has been opened up at a depth of 200 feet between well defined walls—the foot wall being serpentine and the hanging wall porphyry, the vein at this depth being 40 feet wide a 22-inch pay streak running over \$400 per ton in gold, and the whole 40 feet of ore, including the pay streak, averaging about \$12 per ton. The vein here contains from 25 to 30 nar spar seams in the quartz, and the seam on which some development work has been done shows considerable coarse gold, as large as grains of wheat. Three hundred feet west from this tunnel, work of prospecting the vein is going on and at a depth of four feet the vein is 20 feet wide and assays \$4 a ton. The ledge has been determined for a distance of 900 feet and the estimated tonnage, as determined by the work so far done, is in excess of 500,000, with a probable average value of \$12 a ton in gold.

mountain within a half mile of the city limits of Grants Pass was brought to bureau headquarters this week and panned, resulting in a string of fine gold over half an inch long.

In three mines within the Grants Pass district, within the past ten days, veins of sulphide ores carrying free gold in the sulphide as well as immediately adjacent thereto, have been struck. In every case the ore was unusually rich, which is known as high grade, and these mines are separated by points of the compass in distances of not less than 20 miles. These discoveries did not come by virtue of any great amount of capital or any great amount of work, the only thing that was required was a little persistence and a little labor.

W. S. Shuttuck of Holland, who is mining on the Althouse, visited town this week.

Confirmed report of an exceptionally big strike of gold ore in the south part of Josephine county has been made to the bureau, but through request of the owners details are being withheld for the time being. The rock is sufficiently rich to back out over a long trail, haul to the railroad and ship to the smelter for treatment.

The return of the mine is pleasing to mining men and considerable activity is under way shaping up their properties for the season's operations.

The monthly meeting of the mining bureau, held last Saturday, was well attended. R. L. Van deBogart and Tom Chisholm of Gold Hill, A. C. Wearis of Waldo, E. M. Albright of Selma, and Baker and Lush of the Jump Off Joe district, were among the out of town members present.

T. W. Gruetter, a technical mining man, has returned to Grants Pass from San Francisco, with the intention of making this his permanent home.

J. M. Meeker, representing the Mace Smelter of Denver, Colo., spent Tuesday and Wednesday in Grants Pass, visiting at bureau headquarters.

Ore Specimens

In carrying on its campaign of publicity regarding the mineral resources of southwestern Oregon and the progress of their development, the mining bureau plans on an exhibit of ores in Portland within the near future, for the purpose of bringing the matter to the attention of the business men of the metropolis.

To do this the bureau asks that mining men prepare small specimens of various kinds of ore, including gold, copper, tin, lead, chrome, manganese, limestone, marble, etc., and send in to the bureau during the current month. Such specimens should be not over 2 1/2 inches long by 1 1/2 inches thick and 1 inch thick. It is proposed to exhibit the specimens in individual boxes of uniform design; hence there is no need of sending in large specimens.

Much good should come from this exhibit and the cooperation of all mining men is requested.

Local Mining News

Tom Loban of Coyote creek, owner of the Horseshoe mine, is a town visitor this week.

H. L. Arkall of Arkall Brothers, mining operators of Holland, visited Grants Pass this week in connection with his new find of placer ground on the head of Indian creek.

Decomposed granite ore from a

ARE YOU RHEUMATIC?

Many Pangs That Pass for Rheumatism Are Really Due to Weak Kidneys.

Do you suffer the agonizing pangs of rheumatism? Are you tortured with rheumatic joints and stabbing twinges? Then you should know that many so-called rheumatic troubles are due to an excess of uric acid and must be treated through the kidneys. When the kidneys weaken, the whole system is upset by these body poisons. Help your kidneys with a stimulant diuretic. Use Doan's Pills. The remedy your neighbors recommend. Here is a Medford woman's case:

Mrs. C. A. Schmidt, 540 S. Fir St., says: "I had trouble with my kidneys and my back ached constantly. I had rheumatic pains in my lower limbs and back and could hardly keep going. My kidneys acted irregularly, too. Doan's Pills completely relieved the trouble."

A FEW YEARS LATER, Mrs. Schmidt added: "I have had no return of kidney trouble since Doan's cured me."

Price 60c. at all dealers. Don't simply ask for a kidney remedy—get Doan's Pills—the same that Mrs. Schmidt had. Foster-Milburn Co., Mfrs., Buffalo, N. Y. Adv.

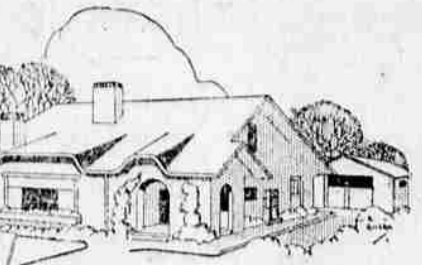
Cook with gas.



Ask for **Horlick's** The ORIGINAL Malted Milk. Safe Milk and Diet For Infants, Invalids, The Aged. Nourishing—Digestible—No Cooking. Avoid Imitations—Substitutes.

Pantorium DYEERS HATTERS CLEANERS PLEATERS

Phone 244
23 N. Fir St.



The Resale Value of Your Home

It will be increased by "Check" Seal electrical wiring

If you ever want to sell your home, you will find its resale value increased by a "Check" Seal electrical installation.

The "Check" Seal is a recognized mark of identification for qualified electrical contractors who make your house a real home of electrical comfort. Like modern plumbing and hardwood flooring, "Check" Seal wiring is a definite resale asset.

Before you build or buy, insist on "Check" Seal electrical wiring. And when you buy electrical appliances, remember also that the "Check" Seal identifies electrical retailers who sell quality electrical merchandise.

PACIFIC STATES ELECTRIC COMPANY

SAN FRANCISCO LOS ANGELES LONG BEACH OAKLAND
PORTLAND SEATTLE SPOKANE

Distributors for General Electric

Before you build, buy or rent—get the Electrical How to Householders. This booklet can be had free from any electrical contractor or retailer who displays the "Check" Seal or by writing our nearest office.




ASSOCIATED GASOLINE

MORE MILES TO THE GALLON

C L E A N

Indeed yes, cleanliness in gasoline has everything to do with the value or miles you get in exchange for your motor-fuel money.

Why? Consider these facts. The gasoline cleanliness that really insures "more miles to the gallon" is unseen. You feel it in your motor. For it results in instant ignition at the spark, and complete "burning" or explosion, with no wasted or unconsumed fuel. Your engine gets every ounce of power contained in each "charge."

Associated Gasoline is distilled by methods that provide a scientifically correct range or "chain" of boiling points, gradually rising from the lower or more "volatile" parts on up through the heavier or power-yielding parts. Associated is thorough-bred, unmixed, honest, dependable. It does a clean, thorough job in a snappy, business-like manner. Use Associated. Get "more miles to the gallon" through sustained quality.

Associated Gasoline



Associated Gasoline and Cyclo Oil, through sustained quality, provide economy and satisfaction in motor operation.

Improved Ford

See the New Improved Ford Touring Car at the

JACKSON COUNTY FAIR

On Display This Week

The First New Ford on the Coast

C. E. GATES AUTO CO. BOOTH