

### BABY CLINIC TO BE HELD FRIDAY PUBLIC LIBRARY

The third Medford baby welfare clinic will be conducted in the basement of the public library, Friday afternoon, June 26, from 2 to 5 o'clock. Dr. V. S. Gearey, county health officer, will examine the babies assisted by Miss Vera Beard and Miss Irene Mann of the Jackson county health unit. The conference is in charge of Miss Beard, public health nurse.

### JURY AWARDS BIG DAMAGES AGAINST GRANTS PASS M. D.

GRANTS PASS, Ore., June 24.—(Special.)—Judge Thomas signed and filed 249 separate judgments in tax foreclosure matters Monday. The circuit court opened with Judge Thomas receiving a sealed verdict in the case of Leo McNair versus Dr. C. J. Moser, the trial of which case occupied the most of last week. The verdict of the jury awarded \$12,100 to the plaintiff, McNair.

### OUTSIDE DISTRICTS HAND IN PETITIONS

The petitions of the districts immediately out of the city to be included within the urban limits have nearly all been turned into the office of City Attorney John H. Carlin.

### DRUNKS FAIL TO SHOW UP, BAIL FORFEITED

The following two cases mark the first arrests for inebriation that have occurred in the city for some time. A man giving his name as being Jack Jones, was arrested by Policeman Leggett Sunday evening for being in an intoxicated condition upon the city streets. He put up \$50 cash bail, for his appearance before Judge Taylor yesterday forenoon at 10 o'clock to answer the charge that was placed against him, but did not appear, so forfeited bail.

TREES IN CRATER NATIONAL FOREST TO BE PLACARDED  
Cards about 10 by 8 inches in size, giving the description and technical name of different trees are to be nailed on the various trees they describe growing in auto camps within the Crater Lake National forest.

### PAGEANT AWAITS ON SUPPORT BY LOCAL CITIZENS

The subscription sale of patron tickets for the annual pageant is moving along in fine shape, according to advices from the officers of the Pageant association. But the producers are asking that all those who have received pledge cards thru the mails, hurry up their response.

### DARROW ARRIVES IN TENNESSEE, IS GIVEN A DEGREE

KNOXVILLE, Tenn., June 24.—(A. P.)—An "army" of expert witnesses, representing various scientific and religious phases of the evolution question will be called in to the trial of J. T. Scopes, indicted high school teacher, it has been announced by defense counsel who continued a conference here today.

### ORPHEUM, JR. BILL IS HIGHLY COMMENDED

The De La Plaza trio, dancers, appearing at the Craterian theater last night in Orpheum Jr., proved one of the best attractions of the vaudeville season and were the headliners of a better than ordinary bill. Arturo and Juanita La Plaza could execute the tango to graceful perfection and Luis Frondi sang bass solos in Spanish.

### JUNE SHOWS A BUMPER CROP OF MARRIAGES

Since January 1, 117 licenses to wed have been issued in this county and 27 divorce complaints have been filed. Thirteen divorce decrees have been granted and 47 are pending before the circuit court that were left over from 1924.

Scandinavian Society Meets Ashland Sunday  
The Scandinavian society of Southern Oregon will hold its annual meeting in the Lithia park, Ashland, Sunday, June 28th at 10 a. m.

### The Markets

Livestock.  
PORTLAND, Ore., June 24.—(U. S. Department of Agriculture.)—Cattle—Nominally steady; receipts, 20 head. Hogs—Steady; receipts, 370 head. Sheep—Steady to 25c up; receipts, 920 head. Lambs, light and handy weight, medium to choice, \$9.50@11.50.

Eggs.  
PORTLAND, Ore., June 24.—Eggs—Steady; current receipts, 31c; pullets, 29@29 1/2c; firsts, 31 1/2@32c; extras, 32 1/2@33c, delivered Portland.

Butter.  
PORTLAND, Ore., June 24.—Butter—Cubes 1/2 to 1 cent higher; market firm. Extra cubes, city 46c; standard, 45c; prime firsts, 44 1/2c; firsts, 41 1/2c; undergrades, nominal; firsts, 46c; cartons, 47c.

Poultry.  
PORTLAND, Ore., June 24.—Poultry—Plentiful, steady. Heavy hens, 22@23c; light, 16c; broilers, 21@24c; young white ducks, 20c.

Potatoes and Onions.  
PORTLAND, Ore., June 24.—Potatoes—Slow; new crop coming in good. Onions—Nominal.

Portland Wheat.  
PORTLAND, Ore., June 24.—Wheat—Hard white, Bluestem, Baart, BBB hard white, \$1.60; soft white, northern spring, \$1.58; western white, \$1.57; hard winter, \$1.56; western red, \$1.55. Today's car receipts—Wheat, 11; flour, 5; corn, 4.

San Francisco Market.  
SAN FRANCISCO, June 24.—Butterfat, l. o. b. San Francisco, 54c.

### "Quo Vadis" Makes Big Hit, Craterian

The grandeur that was Rome is shown on the screen of the Hunt's Craterian for a four days engagement. The picture is a re-creating of the Henryk Sienkiewicz romance of Nero's court and the persecution of the Christians under that tyrant, the burning of the Eternal City being one of the spectacular points of the picture.

### VIAVI

Helpful in Nervous Conditions  
315 Medford Bldg., Phone 841

### CITY CLEANING & DYEING CO.

WERE NOT SATISFIED UNLESS YOU ARE  
Phone 474 624 Riverside St.

### DRINK Maid O'Sko

IT'S DELICIOUS

Never before could you buy so much fruit in a small bottle.  
SKO is made from Real Oranges and there are no synthetic flavors added.  
Close your eyes and you can easily imagine you are "drinking" the fruit itself.  
All our products are guaranteed to be pure and wholesome, which is your protection.  
Jackson County Creamery

### R. W. PRICE ARRIVES TO OPEN CRATER L. AND NEW HOTEL

R. W. Price, who resigned as member of the state game commission, left Tuesday for Ashland. He is operating the lodge at Crater lake and the new Lithia Springs hotel at Ashland. Mr. Price plans to open them both July 1. The first crew for the lake will leave tomorrow and there will be seven carloads of people, resident manager, chef, office force and what not. The crew for the new hotel at Ashland leaves Thursday.

### SOUTHERN PACIFIC OPPOSES HILL LINE EXTENSION PLANS

WASHINGTON, June 24.—(A. P.) Proposals of the Oregon Trunk railway to make certain extensions to its line in central and southern Oregon, were opposed before the Interstate Commerce commission by the Southern Pacific which asserted that the Central Pacific, one of its own subsidiaries, had under way, or was projecting a considerable mileage of new lines in the state.

### WATER PROBLEMS TO BE STUDIED IN ROGUE VALLEY

Co-operative irrigation studies have been arranged between the U. S. Office of Irrigation Investigations and Soil Department of the O. A. C. Experiment Station for the present irrigation season in the Rogue River valley. Charles Hartmann, field agent, is on the ground and has arranged for experiments in co-operation with owners of granite soils near Grants Pass and heavy clay soils near Medford.

### It's Kodak Work We Do

in first class shape, giving you seven and one half hour service. Films in before 10:00 a. m. are out at half past five. No extra charge for gloss finish.

We have a good lot of O. N. G. views

### HEATH'S DRUG STORE (Phone 884)

### HASKINS' DRUG STORE (Phone 16)

As near as your phone.

### Attention, Fruit Growers!

We have taken over the large packing and pre-cooling plant formerly operated by the Oregon Growers' Co-operative Assn. and are now prepared to enter into contracts with growers for their crops of pears and apples on the spot cash basis. Growers will find it to their advantage to communicate with us before disposing of their crops. Office at packing plant now open on North Central Ave.

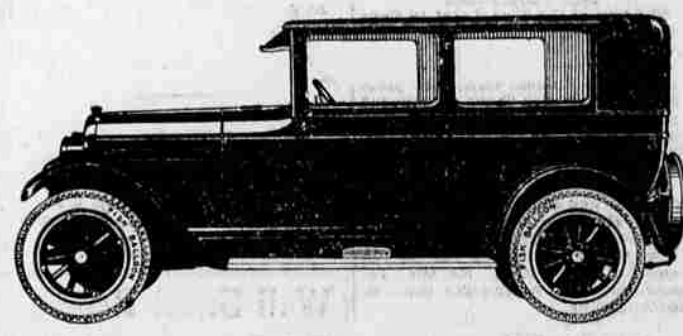
Telephone 30, or can call evenings 972-J

### Suncrest Orchards

LLEWELLYN A. BANKS, Mgr.

WITH MEDFORD TRADE IS MEDFORD MADE

## Sales Increase Again!



# Price Reduced

The price reduction on the new Overland Six Standard Sedan has sent sales soaring!

from \$985 to

# \$895

52 Weeks to Pay

38 h. p. engine . . . 112 3/4 inch wheelbase . . . Larger main bearing surface . . . Pressure feed lubricating system . . . Oil-tight universal joints . . . Heavier crown fenders . . . Windshield wiper . . . Very latest finger-type spark and throttle levers, also horn button, mounted on steering wheel . . . Unusual room and comfort . . . A full size Five Passenger Sedan . . . Now a value beyond comparison. Order early!

# OVERLAND

## Standard SIX Sedan

ARMSTRONG MOTORS, INC.  
123 West Main St. Phone 18

WILLYS OVERLAND FINE MOTOR CARS