

SCHOOL BOARD GIVES REASONS FOR SITE STAND

In Public Statement Members of School Board Point Out Facts Which Make P. and E. Preferable to Holly St.—Will Abide By Vote.

To the Editor: Many patrons of the schools have asked the board to state their position in regard to the site situation, but we have refrained from so doing because we thought it best to wait for the personalities, mis-statements, mud-slinging, innuendos, charges and counter-charges to cease. During all this time, the same and important points seem to have been overlooked.

The selection of a high school site should be considered calmly. Such matters as size of site as regards not only the needs for the present, but for years in the future, possible arrangement of buildings, without cramping, so as to afford plenty of good light and air. The arrangement of the grounds for a football field, basketball diamond, track, bleachers, tennis courts, parking space, etc. (In this connection we wish to call attention to the two layouts made last week by Prof. A. L. Peck of O. A. C. who is an expert on landscaping. These two layouts are on display in Croxson's window.)

Such matters as sewer and water facilities, disturbing noises, dust and smoke, avenues of approach, paved or not, delivery of fuel and other heavy hauling, possibilities of soil for the growing of a lawn, shrubbery and trees, etc., suitability for athletic fields, drainage, both surface and sub-surface, accessibility for pedestrians and cars for day games, night games and entertainments of the school, other uses for the public for it seems to us a building of this kind should have many uses other than as a school.

Direction of growth of city, both resident and business, cost, first and future, to avoid excessive purchases later; value to the city as an advertising feature if placed where visitors can see so excellent a structure, for schools, good water and churches invite home makers; dangerous railroad and street crossings and many other minor points. These are the things you should consider, and these are the things which the board have gone over point by point and weighed carefully for several weeks. Doing so not only on two sites but six. We have all come to a final conclusion that one is best, and that one the P. & E. Nearly a year ago we thought this ideal and should be purchased and obtained a price, the same we have today, but deciding the public could not be made to realize the necessity of so large a tract, we worked out what we still know to be a very economical plan and submitted it. During the pre-election days in January we found the people were eager for a large tract and a more comprehensive building program. We worked out all details assuming the people would take recommendations of the board on a site and had election notices ready to post for the bonds and P. & E. site when we were asked to wait until experts from the University of Oregon could come.

We had already worked out a ten year program, having figured closely just what could and should be done each year to take care of the grammar grades and the high school. It was gratifying to us to compare our plans with the report of the experts and find that during the ten year period we hardly varied from their figures even to the sixteenth year. We differ with them in some points of financing and school law and their advice to take all of the \$185,000.00 voted for a building, paying for a site and necessary equipment in some other way. We were glad to have a check on our figures.

We do feel that since they were brought here primarily to select a site by enthusiasts for the North Holly site, they should not have straddled in points for and against each site and then appended a recommendation for one without giving their reasons, but should have definitely selected one and said so. However, we have no quarrel with them over that.

We cover much space to let the public know that we have been working slowly and carefully.

We have a right to opinions as individuals and each have openly expressed ourselves and do as a collective board, that we believe there is one best site after using the points enumerated in the beginning on six sites. So much has been said about floods and dams, we call attention to the fact that three members of the board have children who will attend high school several years and for the security of our own children, does it not seem reasonable we would be careful about any danger to them, to say nothing of our consideration of other children, damage to buildings and expense to ourselves as taxpayers. Naturally we have been careful. Information gathered since last summer shows us that water never has been or will be on the P. & E. lands.

This method of calling attention to the matters for you to consider in selecting a site and these considered by the board is not meant for an appeal to votes for either site, but to advise the voters where we stand. We favor P. & E.

Californian is Honored. HERKELEY, Cal., May 14.—Dr. W. W. Campbell, president of the University of California, has been named as the first American educator to deliver the annual Halley astronomical lecture at Oxford university, England. The lecture will be given on June 17. The first Halley lecture was delivered 20 years ago. The selection of Dr. Campbell was based upon his work as the director of the Lick observatory, California.

Judge Thomas this afternoon deferred sentence in the Wetmore case for one week, pending further investigation.

ITALIAN WOMAN, NOW IN U.S., REPORTED RETURNING TO TAKE POST IN CABINET

Alice Pallatelli, who has been in this country two years, is returning soon to Italy presumably to accept a portfolio in the Italian Ministry. She will be the first woman to enter the Italian Parliament and to this honor is to be added her nomination for the Cabinet, according to reports heard in Washington.

"\$100,000 Legs" Walk to Altar



Cecille Evans, famed Sennett bathing beauty is going to marry Kenneth Fitzpatrick, Los Angeles man. Cecille is known as "the girl with the \$100,000 legs" because the movie company holds a policy on them for that amount.

site strongly and see wonderful possibilities there as a beautiful show place when worked out over four or five years at no extra cost and without excessive taxes any one year. We have stated our position.

We believe that it is going to be absolutely necessary to use the old high school building for a few years and that the new unit must be near enough for convenience. If the North Holly site is chosen and we have to pay \$20,000 or more for the site, we will have but \$155,000 with which to erect a building and purchase equipment. That simply means that we must have to raise \$25,000 to \$50,000 more before we could use the building on that site and then we would have a building large enough to care for only 600 pupils, according to the University of Oregon experts' report.

Remember, we are making this statement because so many people have asked us to state our position. We are unanimous in our opinion, but will cheerfully abide by the decision of the majority and make the best of what seems to us almost a hopeless situation if the North Holly site is chosen.

I. D. PHIPPS,
N. H. FRANKLIN,
HARRY D. MILES,
A. H. MILLER,
E. E. WILSON.

Four stomach, clogged up bowels, pinches, blackheads, foul breath, are evils of constipation. HOLLISTER'S ROCKY MOUNTAIN TEA regulates the bowels, purifies the stomach, and expels decay matter from the system. Nature's way to cleanse and purify your stomach, kidneys, liver, Salsafory results will follow. Heath's Drug Store and Haskins' Drug Store.—Adv.

Judge Thomas this afternoon deferred sentence in the Wetmore case for one week, pending further investigation.

ITALIAN WOMAN, NOW IN U.S., REPORTED RETURNING TO TAKE POST IN CABINET



Alice Pallatelli, who has been in this country two years, is returning soon to Italy presumably to accept a portfolio in the Italian Ministry. She will be the first woman to enter the Italian Parliament and to this honor is to be added her nomination for the Cabinet, according to reports heard in Washington.

POLLING PLACES IN CITY ELECTION SATURDAY NAMED

For the special election this Saturday on annexing to the city property adjoining the city limits, voting hours will be from 1 p. m. to 7 p. m.

The four voting places inside the city will be as follows:
First ward—Public market.
Second ward—Washington school.
Third ward—Eichtner's garage on Sixth street.
Fourth ward—City hall.

For outside the city voters, several centrally located voting places are provided, as follows: Residence of Mrs. Lena Rosenberg on West Palm street for North Medford; the Berrydale store for North Riverside, and the residence of Mrs. Cary M. Rickett for the Siskiyou Heights section.

SPEED OFFENDERS PAY THEIR FINES

Fred Cook of Talent on his plea of guilty to speeding his motorcycle on the Pacific highway at 50 miles an hour last Tuesday, was fined \$15 in Judge Taylor's court yesterday afternoon.

Cecil B. Evans, said to be a local high school student, was fined \$10 for failure to dim the lights of his car. He also pleaded guilty.
S. A. Dusenbury of Gold Hill, on his plea of guilty to operating a car without a license, was fined \$10.

The above arrests were made by J. J. McMahon, deputy state traffic officer.

LOCAL CHAUTAUQUA OFFICIALS NAMED

At a meeting of the guarantors of the Medford chautauqua for 1925, held at the public library Tuesday evening, the following officers were elected: Chairman, J. Willard De Yoe; secretary, J. R. Tyrrell; committee chairman, grounds committee, S. C. Godlove; advertising committee, Aubrey G. Smith; junior committee, Miss Elizabeth Ferguson.

Arrangements were made for another meeting at the library Friday evening, May 15, at 8 o'clock. All guarantors are urged to be present as a definite arrangement, regarding the housing of the coming attractions must be concluded. Everyone interested in a successful chautauqua is cordially invited.

CONVICTS STEAL AUTO
(Continued from page one.)

around your neck, like I will get." After leisurely cooking themselves breakfast the bandits helped themselves to some provisions and left in the family automobile.

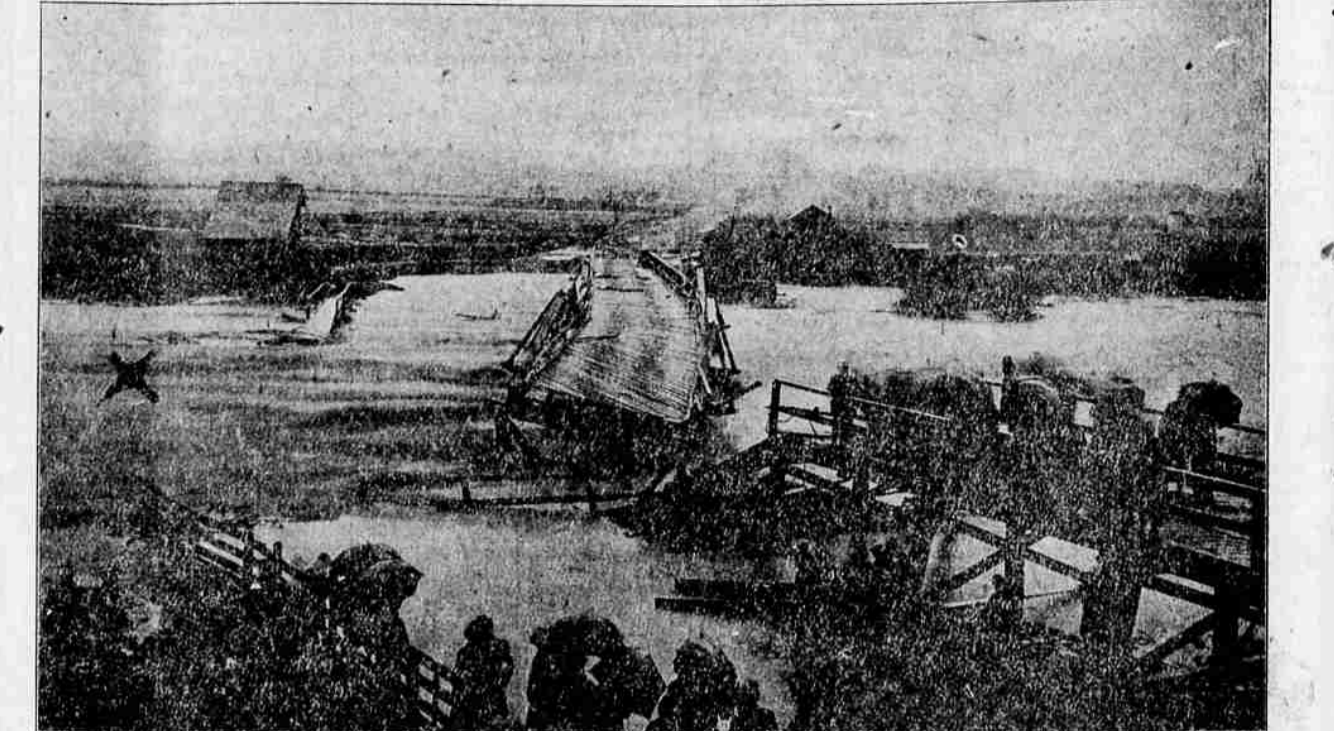
Something like thirty-three or thirty-four years ago when Bear creek was up to a height that it took some of the buildings down stream, one barn on the east side that was filled with hay went out, with the chickens floating down stream on bunches of hay.

The wagon bridge on Main street, and also the foot bridge, went out when Ed Wilkinson, standing on the latter, went down with the bridge into the water and lost his umbrella. This would have been a bad time for a high school on this low land. I hope it will never come again like that, but it still rains in Oregon. The stream was



RIALTO
TONIGHT LAST TIMES!
REX INGRAM'S
Production
"THE ARAB"
THE MAD RAPTURE OF DESERT LOVE!
Featuring
Ramon Navarro
and **Alice Terry**
Based on the Famous Stage Play
—Also—
Mack Sennett Comedy
"OFF HIS TROLLEY"
INTERNATIONAL NEWS
"PEGGY" at the Organ
FRIDAY—
REX BEACH'S
"The Iron Trail"

Bear Creek on One of Its Periodical Rampages



Picture of Bear Creek at Main Street Bridge During the February, 1890, Flood. X Indicates East Bank of Bear Creek.

BEAR CREEK EIGHT FEET DEEP AT COREY'S GROCERY

In 1854, my father and his brother came to Medford from the Willamette valley. That spring a flood swept down Bear creek. The water extended from the present west bank of Bear creek to the foot of the hospital hill.

By measuring the driftwood in the trees then out on the level at the present location of Corey's Grocery, the depth of the water was found to be eight feet.

Two men by the names of Dover and Lewis had a large herd of cattle grazing on the east side of Bear creek. These cattle were all swept down the stream and drowned.

Several years ago Bear Creek broke through near the southeast corner of Earheart's place, on the east side of the creek, and quite a stream passed through the old channel across the proposed school site.
(Signed) S. P. BARNEBURG.

P. & E. SITE NOT PROPER PLACE

After a continuous residence of thirty years in Medford, and having had opportunity to see the high waters of Bear creek at different times, I do not consider the P. & E. site a proper place for the high school.
(Signed) G. L. SCHERMERHORN.

WHEN ED WILKINSON WENT DOWN WITH THE BRIDGE

Something like thirty-three or thirty-four years ago when Bear creek was up to a height that it took some of the buildings down stream, one barn on the east side that was filled with hay went out, with the chickens floating down stream on bunches of hay.

The wagon bridge on Main street, and also the foot bridge, went out when Ed Wilkinson, standing on the latter, went down with the bridge into the water and lost his umbrella. This would have been a bad time for a high school on this low land. I hope it will never come again like that, but it still rains in Oregon. The stream was

wide and covered some of the ground on the east side.

We are sure the soil is good on that side, for it has been washed in by high waters. We feel that all public buildings should be on high, slightly ground, not merely that someone might profit by location. As I have no children to go to school I always try to vote to the best interest of the school children and to my way of thinking.

In this flood I helped swing the box across the creek to bring the people over. The old creek has been some menace to the public most every spring.
W. M. DAVIS,
402 South Central Avenue, Medford.

BULKHEADS SAVE THE P. & E. SITE

The old channel of Bear creek runs under a house just west of Corey's Grocery. (This is adjacent to the proposed location of high school building.) This old channel can easily be seen from the rear of the lot.

In 1900 a flood began to cut through the old channel. Two different times in the early history of Medford they took up subscriptions to build bulkheads to keep the water from following its old channel. (It did break through near Cottage street), and, no doubt, such men as H. T. Nicholson, Charles Strang, Hubbard brothers, the Lawtons, Dr. Piekel, Ed Wilkinson and Jackson County Bank will remember contributing to this fund.
T. E. POTTENGER.

Dr. E. B. Piekel, Medford's premier physician and health officer for many years, crowded a lot of substance into a few words the other day when a friend told him he was going to vote for the P. & E. site because the tourists traveling on the Pacific highway and east on Main street to the Crater Lake highway, could all see the high school building.

The doctor replied—"Yes, when they see it, all they will say about it is, 'What a hell of a place to build a high school!'"

OUR AIM

We try at all times to give our many customers the best values obtainable. When you buy from us you know our goods are dependable, and if you don't get the service you think you should, all you need to do is return the article to us and get your money back. We believe in a policy of **FAIR and HONEST DEALING.**

<p>PANTS</p> <p>Khaki Pants, a lightweight khaki for summer \$1.25</p> <p>Cottonade Pants, dark color with light stripes \$1.75</p> <p>Moleskin Pants, a woven genuine moleskin cloth \$3.00</p> <p>Day's "Big 5" Khaki, tailored like a dress pant, made of heavy unstarched material, pair \$2.85</p>	<p>SHIRTS</p> <p>Hickory Style Shirts 95c</p> <p>Khaki Shirts 95c</p> <p>Blue Devil Chambray 95c</p> <p>Blue Chambray 75c</p> <p>Grey Chambray 95c</p> <p>UNDERWEAR</p> <p>Topkis Athletic Union Suits \$1.00</p> <p>Two-piece Knit Drawers and Shirts, per armment 60c</p>
--	--

TWO BIG LEADERS

No. 8725 Solid Leather Work Shoes, made by Freidman-Shelby; an unusual value, worth easily \$3.50 or \$4.00, but you buy it here for **\$2.50**

Day's Tailored Moleskin Suits, made of the finest grade moleskin obtainable; will not fade, launders up nicely and are very neat and sturdy **\$9.75**

<p>CAMPING EQUIPMENT</p> <p>7x7 White Auto Tents \$7.85</p> <p>Sheik Tents, made of 10-oz. waterproof drill \$28.50 and up</p> <p>Steel Auto Beds, 48x74 sagless rust-proof springs, rolls to 48x6 \$10.85</p> <p>Folding Canvas Cots \$3.75</p> <p>Army Shelter Tents \$4.00</p>	<p>Hand Trunks for running boards, prices from \$5.95 and up</p> <p>Lincoln Steel Tables \$6.50</p> <p>Hardwood Camp Chairs \$1.00</p> <p>Navy Hammocks \$3.25</p> <p>Coleman Superior Camp Stoves, hot blast generator and built-in pump; two sizes \$9.00 and \$12.50</p>
---	---

A full line of Blankets, Folding Mattresses, Crying Pans, Camp Grids, Cups, Army Mess Kits, Canteens, Water Bags and General Equipment.

ARMY & OUTING STORES

EVERYTHING FOR WORKINGMAN AND CAMPERS

Phone 913-L 32 South Central Ave., Opposite Craterian Theater
R. S. Stewart, Manager Your Satisfaction is Our Success



The best stories are never written

HOW many times have you said, "This would make a wonderful short story"? But you didn't write it, and the inspiration was soon forgotten.

"Many a story banged off hot on my Corona in a front-line dugout would never have been written if I had waited to reach a spot of greater convenience."—Louis R. Freeman, War Correspondent, Explorer, Traveler.

The advantage of owning a Portable Corona is that you can write your best thoughts as they come to you, anywhere, any time—and that's the secret of successful writing! The newest Corona (Model Four) has the standard keyboard used in offices everywhere.

Corona Four costs only \$60. Easy terms if desired. Call or phone for demonstration.

Medford Book Store
N. Central Ave.
CORONA